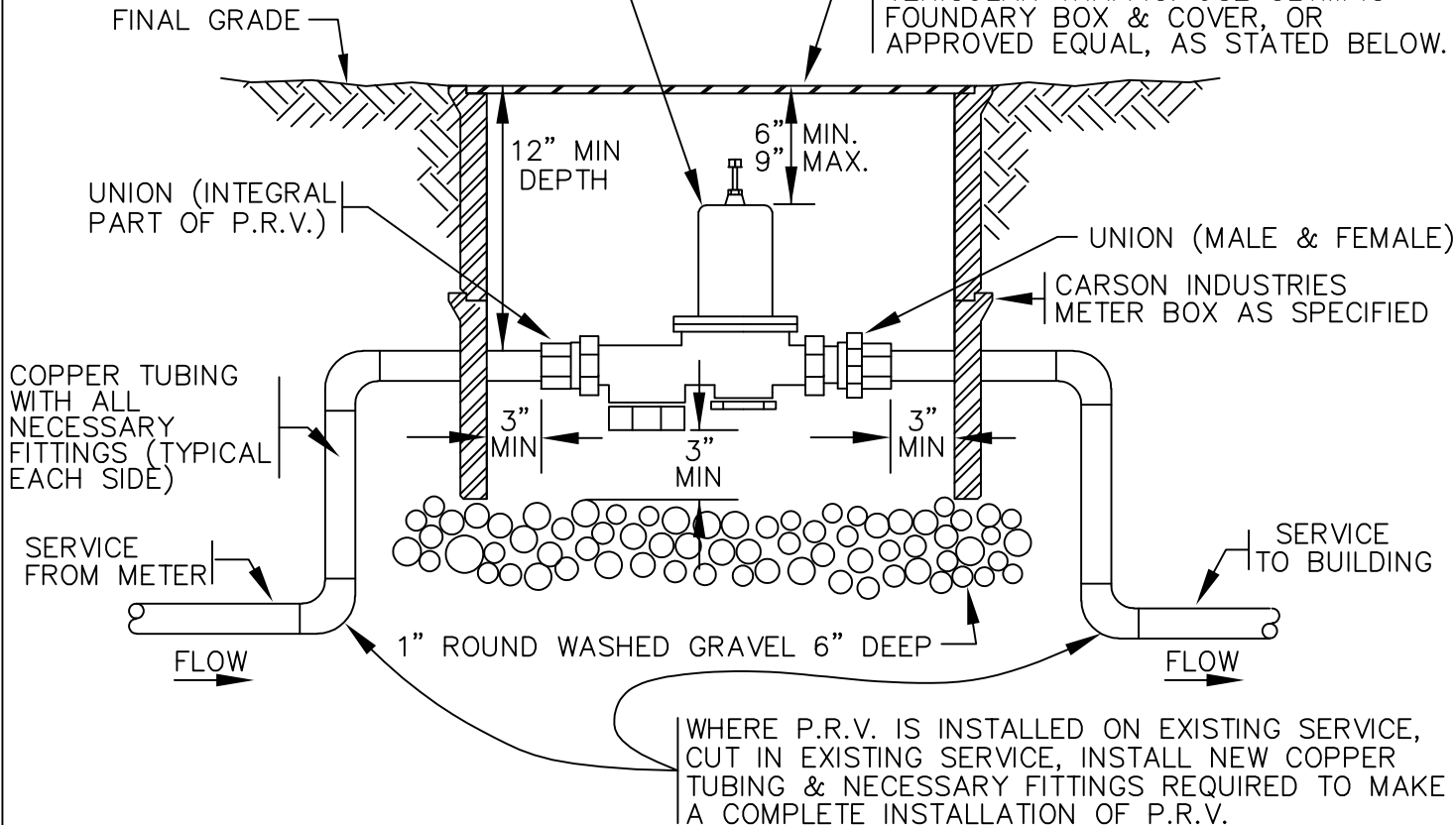


P.R.V. SHALL HAVE AN INTEGRAL BYPASS

PRESSURE REDUCING VALVE
ZURN/WILKINS 600XL-HLR-SC
OR APPROVED EQUAL (LEAD
FREE WITH SEALED CAGE,
INTERNAL BYPASS AND
STRAINER

PROVIDE CARSON INDUSTRIES
DUCTILE IRON COVER, OR APPROVED
EQUAL IN LANDSCAPING, IN
SIDEWALKS AND AREAS WITH
VEHICULAR TRAFFIC. USE OLYMPIC
FOUNDARY BOX & COVER, OR
APPROVED EQUAL, AS STATED BELOW.



WHERE P.R.V. IS INSTALLED ON EXISTING SERVICE,
CUT IN EXISTING SERVICE, INSTALL NEW COPPER
TUBING & NECESSARY FITTINGS REQUIRED TO MAKE
A COMPLETE INSTALLATION OF P.R.V.

P.R.V. SIZE	CARSON INDUSTRIES METER BOX MODEL NO. (OR APPROVED EQUAL)	OLYMPIC FOUNDARY BOX & COVER (OR APPROVED EQUAL)
2"	1730-18 BCFXL	SM-30
1 1/2"	1730-18 BCFXL	SM-30
1"	1527-18 BCF	SM-29



City of
Bellevue

WATER UTILITY

TITLE
INDIVIDUAL PRESSURE REDUCING
VALVE ASSEMBLY
(RESIDENTIAL)