

**BELLEVUE
POLICE DEPARTMENT
BELLEVUE, WASHINGTON**

1967

ANNUAL REPORT

BELLEVUE POLICE DEPARTMENT

ANNUAL REPORT
FOR THE YEAR
1967



N. J. GIARDINA
CHIEF OF POLICE

Law Enforcement Code of Ethics

As a Law Enforcement Officer, my fundamental duty is to serve mankind; to safeguard lives and property; to protect the innocent against deception, the weak against oppression or intimidation, and the peaceful against violence or disorder; and to respect the Constitutional rights of all men to liberty, equality and justice.

I will keep my private life unsullied as an example to all; maintain courageous calm in the face of danger, scorn, or ridicule; develop self-restraint; and be constantly mindful of the welfare of others. Honest in thought and deed in both my personal and official life, I will be exemplary in obeying the laws of the land and the regulations of my department. Whatever I see or hear of a confidential nature or that is confided to me in my official capacity will be kept ever secret unless revelation is necessary in the performance of my duty.

I will never act officiously or permit personal feelings, prejudices, animosities or friendships to influence my decisions. With no compromise for crime and with relentless prosecution of criminals, I will enforce the law courteously and appropriately without fear or favor, malice or ill will, never employing unnecessary force or violence and never accepting gratuities.

I recognize the badge of my office as a symbol of public faith, and I accept it as a public trust to be held so long as I am true to the ethics of the police service. I will constantly strive to achieve these objectives and ideals, dedicating myself before God to my chosen profession . . . law enforcement.

1967

City Population of 26,653

City Budget of \$2,597,126.00

17.0 sq. miles with 139 miles of public roads

Police Budget of \$278,316.00

44 Personnel 7 Traffic Officers

Equipment

9 Police Dars

Cars used for Traffic

1 1966 Harley-Davidson Motorcycle

1 1968 Harley-Davidson Motorcycle

Personnel

N.J. Giardina, Chief

25 Patrolmen

G.C. Whitman, Asst. Chief

4 Clerk I

4 Captains

3 Clerk II

6 Sergeants

Promotions

Capt. G.C. Whitman to Asst. Chief 1-1-67

Sgt. C.A. Meyer to Capt. 1-1-67

Det. R.H. Wittauer to Det. Sgt. 1-1-67

Sgt. F.M. Anderson to Capt. 2-1-67

Ptlm. F. D. Williams to Sgt. 2-1-67

Sgt. R.F. Davis to Capt. 10-1-67

Ptlm. J.B. Pettersen to Sgt. 10-1-67

Ptlm. D.J. Laphorne to Sgt. 10-1-67

Ptlm. J.E. Hassinger to Sgt. 12-1-67

Resignations

Capt. G.R. Quarnstrom 2-1-67

Ptlm. J.C. Kellum 2-10-67

Ptlm. I.N. Strom 3-31-67

Ptlm. N.L. Kelly 4-11-67

Ptlm. S.D. Smith 5-5-67

Ptlm. J.J. Brennan 7-24-67

Capt. F.M. Anderson transferred to Public Works

Clerk II A.E. Wegener 8-21-67

Ptlm. E.J. Fjerstad 10-17-67

Clerk II R.A. Stone 11-23-67

Ptlm. D.M. Smith 12-1-67

Ptlm. J.P. Ryan 12-21-67

New Employees

Ptlm. P.H. Olson 2-16-67

Ptlm. R.C. Gleason 2-16-67

Ptlm. S.B. Smith 4-1-67

Ptlm. R.S. Kingsbury 4-1-67

Ptlm. C.C. Parker 6-16-67

Ptlm. C.A. Turi 7-16-67

Ptlm. P.M. Smith 7-16-67

Ptlm. J.R. Little 7-16-67

Ptlm. J.P. Ryan 10-16-67

Ptlm. R.A. Pierson 11-16-67

Ptlm. W.L. Potter 11-16-67

Clerk II C. Anderson 11-1-67

Ptlm. H.J. Nordyke 7-16-67

Clerk II A.E. Wegener 7-26-67

Ptlm. R.W. Guley 8-16-67

Ptlm. J.J. Larkin 8-16-67

Ptlm. D.E. Morrison 8-16-67

Ptlm. E.J. Fjerstad 9-16-67

Clerk II J.A. Regula 9-19-67

Ptlm. R.D. Stover 10-16-67

Ptlm. J.J. Brennan 12-1-67

Ptlm. B. Collin 12-1-67

Ptlm. C.S. German 12-1-67

Ptlm. J.C. Kellum 12-29-67

1967 cont.

Traffic Division

864 accidents
615 were investigated by officers
249 were non-investigated citizen's reports

0 fatals
435 injured

Adult citations - 4559
Juv. citations - 649
Warnings - 8118

1132 hours worked in Accident Investigation
6865 hours work@d in Traffic Enforcement

TABLE OF CONTENTS

City of Bellevue Public Officials	page 1
City of Bellevue General Information	page 2
City of Bellevue Aerial Photograph	page 3
City of Bellevue Map	page 4

SECTION I

DEPARTMENT ORGANIZATION AND PERSONNEL

Chief's Message	page 5 - 6
Organization Chart	page 7
Salary Structure - Personnel Strength	page 8 - 9
Department Personnel Photograph	page 10
Personnel by Position	page 11 - 13
Personnel Changes	page 14 - 16
Assistant Chief of Police	page 17
Patrol Division	page 18
Patrol Division Photograph	page 19
Traffic Division	page 20
Traffic Division Photograph	page 21
Detective Division	page 22
Detective Division Photograph	page 23
Services Division	page 24
Services Division Photograph	page 25

TABLE OF CONTENTS (CONT)

SECTION II

STATISTICAL INFORMATION

Budget Allowance	page 26
Complaints - Arrests	page 27 - 33
Complaint Zone Map	page 34
Complaint Values	page 35
Complaints by Zone	page 35
Complaints by Month	page 36
Complaints by Day of Week	page 36
Complaints by Hour of Day	page 36 - 38
Complaints Included	page 38
Arrests by Month	page 39
Arrests by Area of Residence	page 39
Arrests by Type	page 40
Arrests by Police Disposition	page 40
Complaints - Arrests Graph	page 41
All Accidents	page 42
Violations Causing Accidents	page 42
Accident Values	page 42
Accidents by Month	page 43
Accidents by Day of Week	page 43
Accidents by Hour of Day	page 43 - 44

TABLE OF CONTENTS (CONT)

Enforcement Action Taken	page 45
Citations by Month	page 45
Citations by Day of Week	page 46
Citations by Hour of Day	page 46
Accidents - Citations Graph	page 47
Miscellaneous Activity	page 48
Man Hours Distribution	page 49 - 50
Vehicle Operation	page 51

SECTION III

SPECIAL REPORT ON TRAINING

Training Photograph	page 52
Bellevue Police Academy	page 53 - 55
College Accreditation	page 55
Education Incentives	page 55 - 59
Tuition Reimbursement	page 59

CITY OF BELLEVUE

PUBLIC OFFICIALS

COUNCIL:

Kenneth A. Cole - Mayor

Clarence F. Wilde

Kenneth E. Gates

Robert J. Meagher

William H. Biggs

Charles H. Simonson

Robert J. Mulloy

CITY MANAGER:

L. Joe Miller

JUDGE:

Melvin V. Love - Bellevue District Justice

CIVIL SERVICE COMMISSION:

John D. Shaw RAdm (ret) - Chairman

Arthur C. Evered

John F. Doorish

Ellen B. Swenson - Secretary

CITY OF BELLEVUE
GENERAL INFORMATION

INCORPORATED:

March 31, 1953

GOVERNMENT:

Council - Manager

LOCATION:

On the east side of Lake Washington directly across from the City of Seattle to which it is connected by two floating bridges.

AREA:

1966 - 11.6 square miles with 114 miles of public streets

1967 - 17.0 square miles with 139 miles of public streets

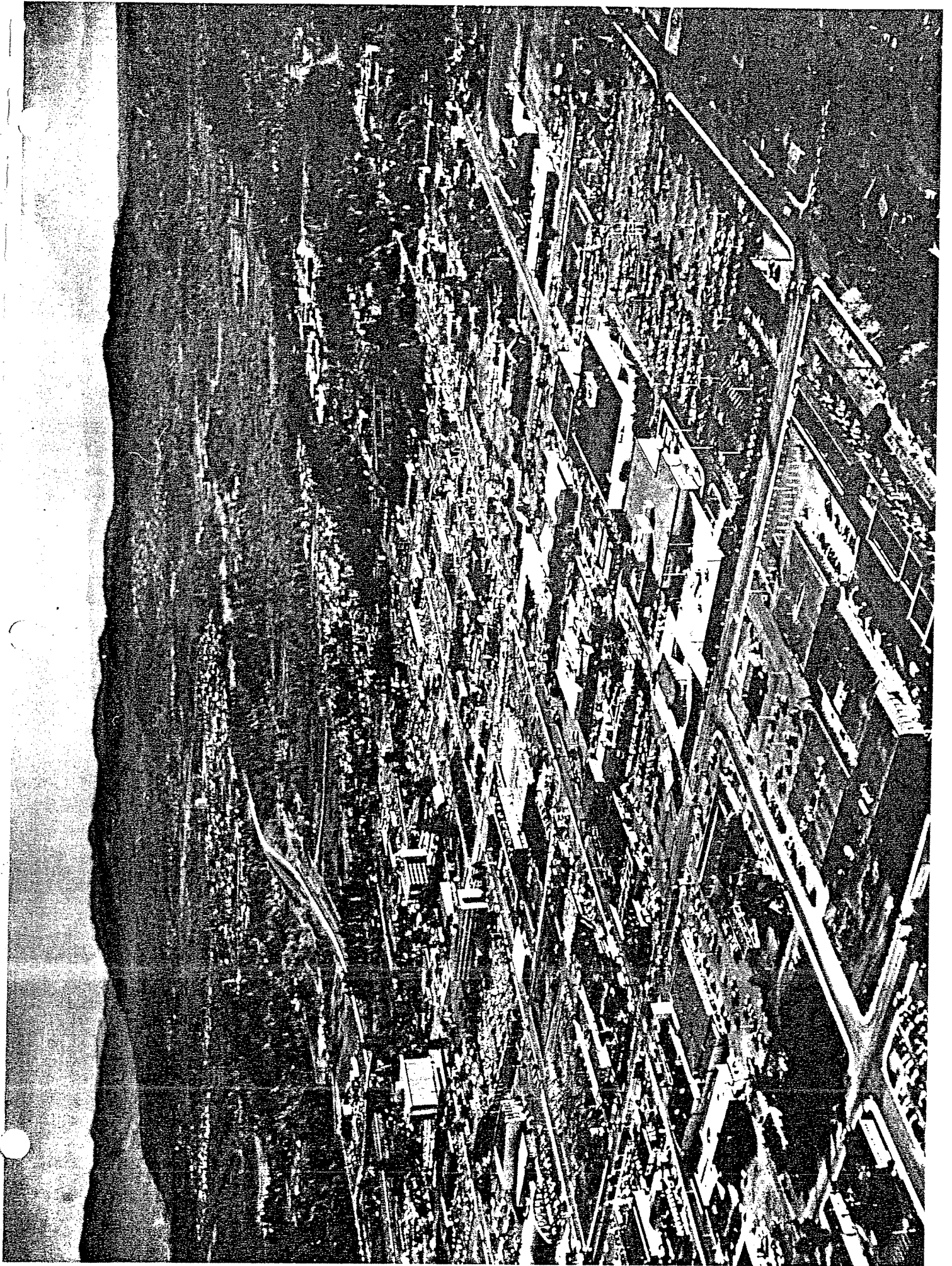
POPULATION:

1966 - 20,600

1967 - 26,653

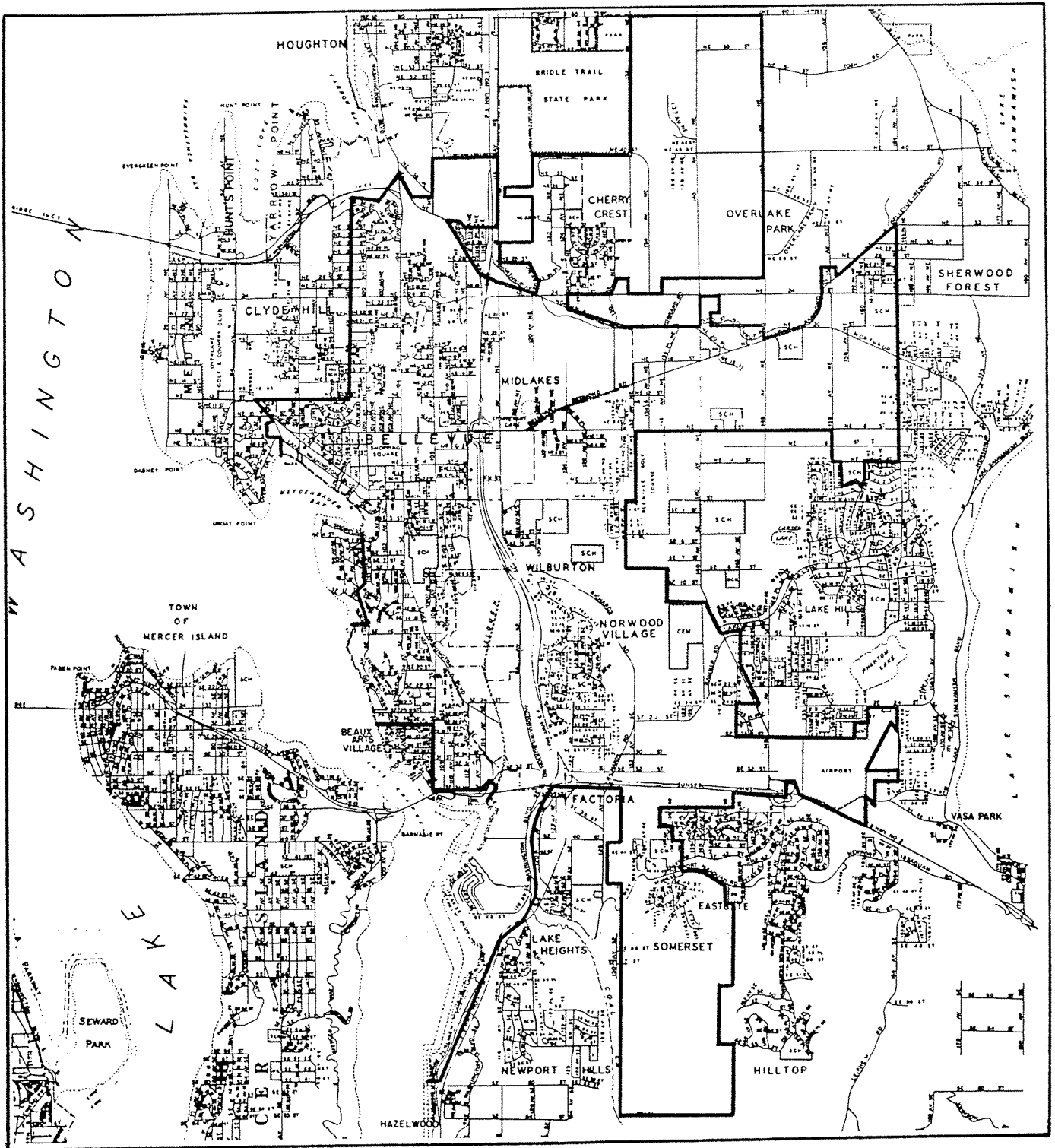
CHARACTER:

The City of Bellevue is the rapidly expanding center of business and residential development on the suburban "East Side" of metropolitan Seattle.



CITY OF BELLEVUE

1967



SECTION I
DEPARTMENT ORGANIZATION
AND
PERSONNEL

CHIEF'S
MESSAGE



Mr. L. Joe Miller, City Manager
City of Bellevue, Washington

Dear Mr. Miller:

Submitted herewith is the 1967 Annual Report of the Bellevue Police Department.

There were three areas of particular achievement during the past year which deserve comment, and these were:

1. An increase in strength from 33 to 44 personnel, with an additional 4 scheduled for 1968.
2. A substantial increase in salaries for the 1968 budget.
3. Special emphasis on training, with concurrent requirements and benefits.

The increase in personnel has significantly aided the Department in fulfillment of its primary responsibility to protect the public during a period of phenomenal City expansion and a general increase in activity that necessitates Police Service. The full effects of this expansion have not yet been fully realized, due to the time required to recruit personnel of the standards we demand and train them, but their results are

being felt and an additional four men have been authorized for 1968 to further assist with continued expanding activity.

The increase in salaries authorized for 1968 has raised the level of income for Department personnel to a competitive standard with other agencies in the Metropolitan Seattle area and has greatly assisted, not only in the continued recruitment of superior personnel, but also in the retention of valuable experience. This has promoted the high morale necessary to effective performance and has enabled the official discontinuance of all outside employment by Police Officers. The comparative salary schedules for 1967 and 1968 will be found in this report.

The emphasis on training has consisted of the Bellevue Police Academy expansion to six weeks duration, its official recognition for award of college credit upon successful completion, college education requirements for promotion, and percentage pay increases above base salaries for specified levels of college education. We are especially proud of this "package" and I am convinced that it constitutes a major step forward in the goal of achieving professional standards and status in the Police Service. The specific details of these programs will be found in the Special Report on Training, Section III of this report.

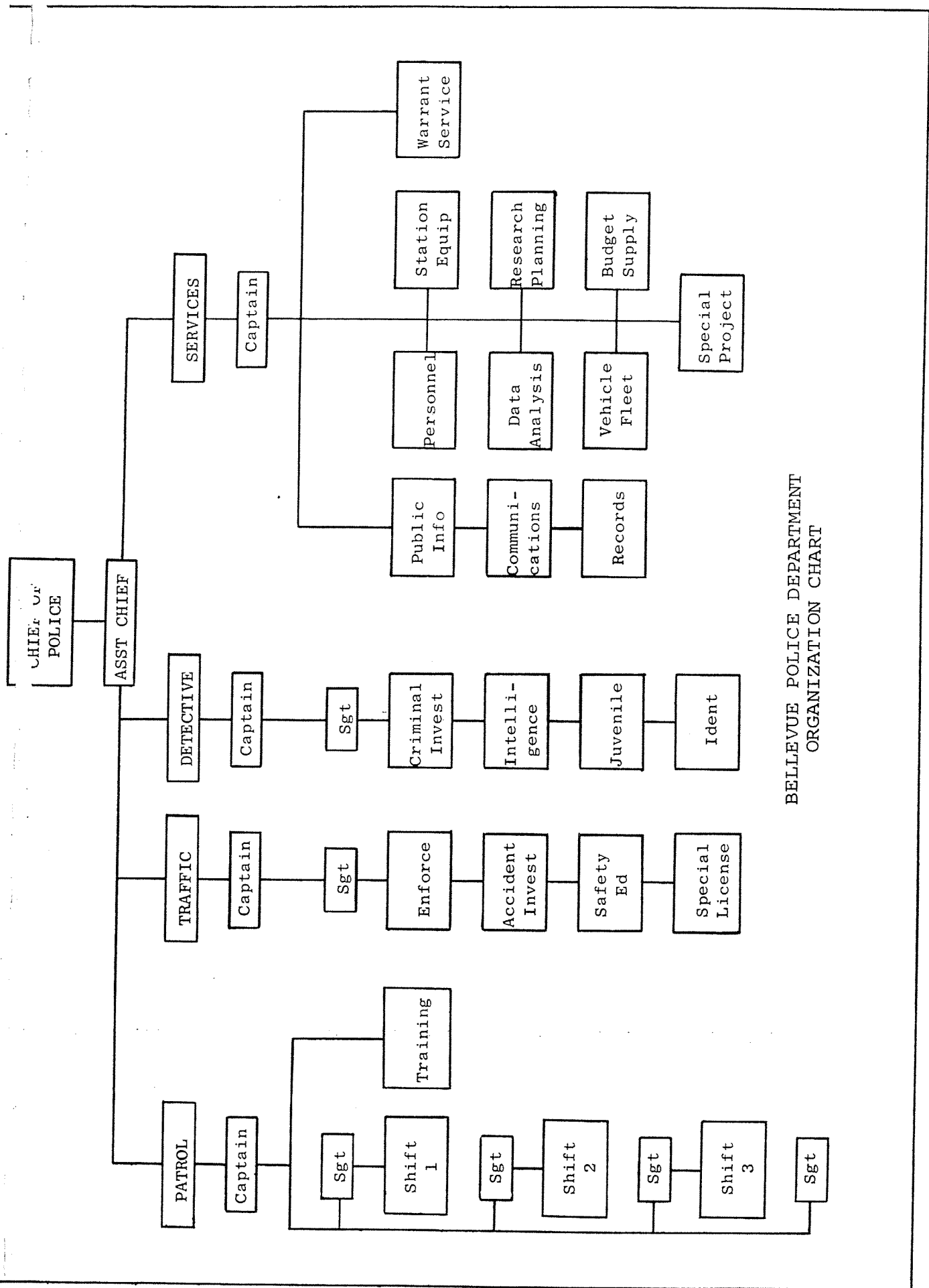
In all of the above areas of accomplishment, I wish to express my sincere appreciation for the forward thinking approach that both the City Council and the City Manager have consistently taken, in their authorization of necessary resources and their support of our efforts to serve the citizens they represent.

As always, the Bellevue Police Department will continue to operate in purposeful dedication to the protection of the lives, rights and property of our citizens and I wish to commend the members of my staff for their unselfish pursuit of this goal.

Respectfully submitted,



N.J. Giardina, Chief of Police



BELLEVUE POLICE DEPARTMENT
ORGANIZATION CHART

SALARY STRUCTURE - PERSONNEL STRENGTH

967 SCHEDULE:

Position	Step A	Step B	Step C	Step D	Step E	Number
Chief of Police	767	805	845	887	930	1
Assistant Chief	694	730	767	805	845	1
Captain	660	694	730	767	805	4
Sergeant	600	629	660	694	730	6
Patrolman *	517	544	572	600	629	25
Clerk I	384	403	424	445	468	4
Clerk II	366	384	403	424	445	3
Total Personnel						44

* Detective allowance of 3 % additional

968 SCHEDULE:

Position	Step A	Step B	Step C	Step D	Step E	Number
Chief of Police	-	-	1050	1075	-	1
Assistant Chief	-	-	950	975	-	1
Captain	-	-	850	900	-	4
Sergeant	-	-	775	800	-	6

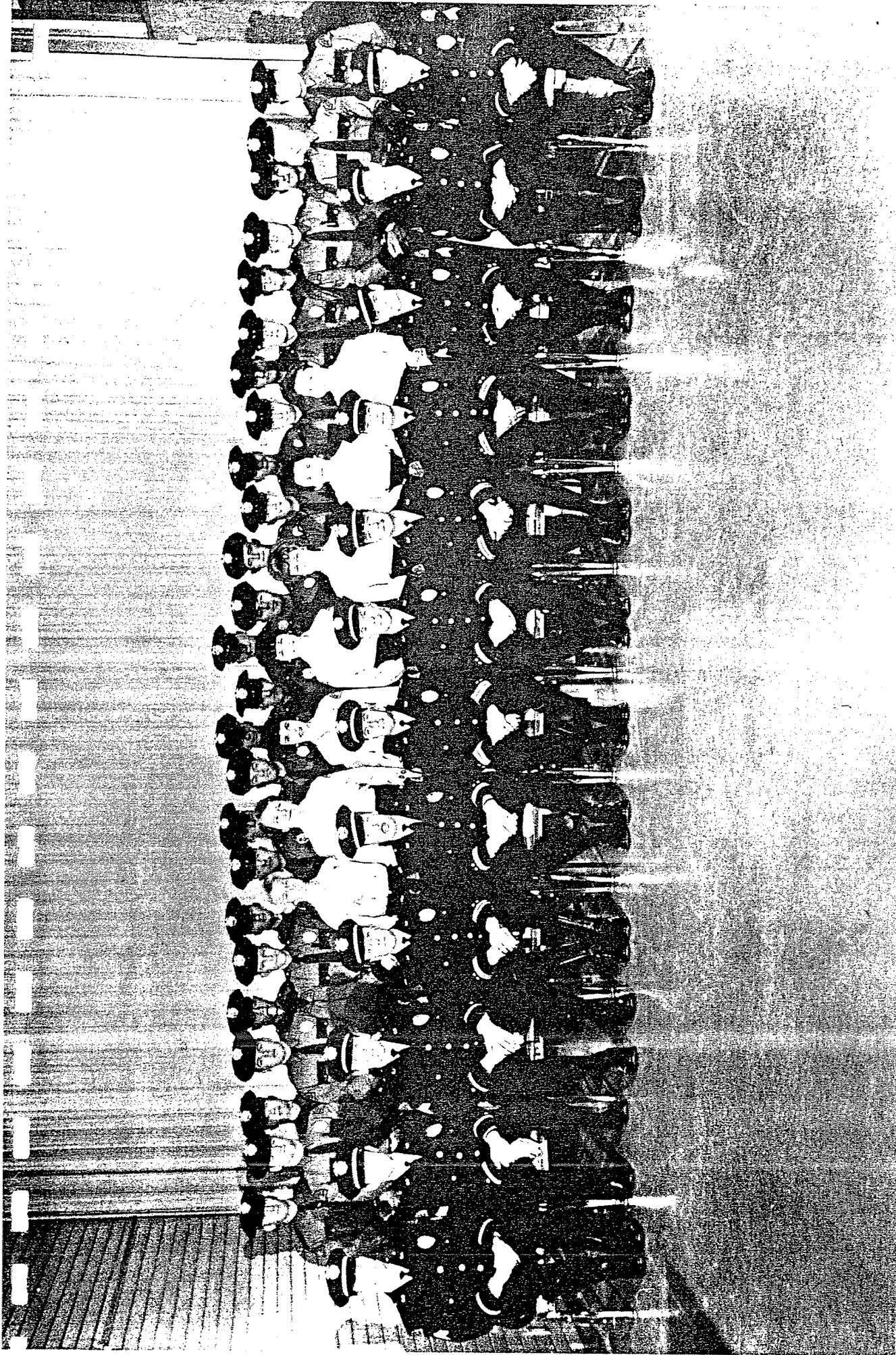
SALARY STRUCTURE - PERSONNEL STRENGTH (CONT)

1968 SCHEDULE (CONT):

Position	Step A	Step B	Step C	Step D	Step E	Number
Patrolman *	650	675	700	725	-	29
Clerk I	422	443	465	488	512	4
Clerk II	402	422	443	465	488	3
	Total Personnel					48

* Detective allowance of 3 % additional

* Motorcycle rider allowance of \$ 15 additional



PERSONNEL BY POSITION

NAME	EMPLOYMENT DATE	POSITION
N.J. Giardina	1/1/55	Chief
G.C. Whitman	9/16/53	Asst. Chief
H.F. Corkrey	12/1/55	Captain
D.P. Van Blaricom	12/6/56	Captain
C.A. Meyer	1/1/57	Captain
R.F. Davis	8/5/58	Captain
W.C. Fredrickson	5/1/61	Sergeant
R.H. Wittauer	10/14/57	Sergeant
F.D. Williams	7/16/63	Sergeant
J.B. Pettersen	10/16/64	Sergeant
D.J. Lapthorne	10/1/61	Sergeant
J.E. Hassinger	1/11/65	Sergeant
G.A. George	8/1/60	Patrolman
C.D. Hein	8/16/64	Patrolman
G.E. Arcand	4/1/65	Patrolman
D.E. Hansen	5/16/65	Patrolman
D. Smith	1/1/66	Patrolman
R.A. Woods	9/1/66	Patrolman
R.A. Maier	10/16/66	Patrolman

PERSONNEL BY POSITION (CONT)

NAME	EMPLOYMENT DATE	POSITION
P.H. Olson	2/16/67	Patrolman
R.C. Gleason	2/16/67	Patrolman
R.S. Kingsbury	4/1/67	Patrolman
C.C. Parker	6/16/67	Patrolman
C.A. Turi	7/16/67	Patrolman
J.R. Little	7/16/67	Patrolman
H.J. Nordyke	7/16/67	Patrolman
R.W. Guley	8/16/67	Patrolman
J.J. Larkin	8/16/67	Patrolman
D.E. Morrison	8/16/67	Patrolman
R.D. Stover	10/16/67	Patrolman
R.A. Pierson	11/16/67	Patrolman
W.L. Potter	11/16/67	Patrolman
J.J. Brennan	12/1/67	Patrolman
B. Collin	12/1/67	Patrolman
C.S. German	12/1/67	Patrolman
J.C. Kellum	12/29/67	Patrolman
F.M. Allen	8/15/57	Clerk I
C.T. Steere	12/3/57	Clerk I
L.M. Beard	2/1/61	Clerk I
B.J. Woolard	11/2/61	Clerk I

PERSONNEL BY POSITION (CONT)

NAME	EMPLOYMENT DATE	POSITION
T.A. Berry	9/1/66	Clerk II
J.A. Regula	9/19/67	Clerk II
C. Anderson	11/1/67	Clerk II

PERSONNEL CHANGES

PROMOTIONS:

Asst. Chief G.C. Whitman from Captain	1/1/67
Captain C.A. Meyer from Sergeant	1/1/67
Sergeant R.H. Wittauer from Patrolman	1/1/67
Captain F.M. Anderson from Sergeant	2/1/67
Sergeant F.D. Williams from Patrolman	2/1/67
Captain R.F. Davis from Sergeant	10/1/67
Sergeant J.B. Pettersen from Patrolman	10/1/67
Sergeant D.J. Lapthorne from Patrolman	10/1/67
Sergeant J.E. Hassinger from Patrolman	12/1/67

NEW PERSONNEL:

Patrolman P.H. Olson	2/16/67
Patrolman R.C. Gleason	2/16/67
Patrolman S.D. Smith	4/1/67
Patrolman R.S. Kingsbury	4/1/67
Patrolman C.C. Parker	6/16/67
Patrolman C.A. Turi	7/16/67
Patrolman P.M. Smith	7/16/67
Patrolman J.R. Little	7/16/67

PERSONNEL CHANGES (CONT)

NEW PERSONNEL (CONT):

Patrolman H.J. Nordyke	7/16/67
Clerk II A.E. Wegener	7/26/67
Patrolman R.W. Guley	8/16/67
Patrolman J.J. Larkin	8/16/67
Patrolman D.E. Morrison	8/16/67
Patrolman E.J. Fjerstad	9/16/67
Clerk II J.A. Regula	9/19/67
Patrolman R.D. Stover	10/16/67
Patrolman J.P. Ryan	10/16/67
Patrolman R.A. Pierson	11/16/67
Patrolman W.L. Potter	11/16/67
Clerk II C. Anderson	11/1/67
Patrolman J.J. Brennan	12/1/67
Patrolman B. Collin	12/1/67
Patrolman C.S. German	12/1/67
Patrolman J.C. Kellum	12/29/67

TERMINATIONS:

Captain G.R. Quarnstrom	2/1/67
Patrolman J.C. Kellum - Re-employed 12/29/67	2/10/67
Patrolman I.N. Strom	3/31/67

PERSONNEL CHANGES (CONT)

TERMINATIONS (CONT):

Patrolman N.L. Kelly	4/11/67
Patrolman S.D. Smith	5/5/67
Patrolman J.J. Brennan - Re-employed 12/1/67	7/24/67
Captain F.M. Anderson - Transfer to Public Works Department	8/15/67
Clerk II A.E. Wegener	8/21/67
Patrolman E.J. Fjerstad	10/17/67
Clerk II R.A. Stone	11/23/67
Patrolman P.M. Smith	12/1/67
Patrolman J.P. Ryan	12/21/67

ASSISTANT
CHIEF OF POLICE



The Assistant Chief of Police is primarily responsible for direct aid to the Chief of Police in the administration of the Bellevue Police Department. In accomplishing this function he serves to coordinate the activities of the Patrol, Traffic, Detective and Services Divisions towards achievement of maximum effectiveness.

As a Department representative, he acts as a liaison with other official agencies and is particularly active in the fulfillment of speaking engagements.

In the absence of the Chief of Police, the Assistant Chief of Police acts in that capacity.

G. C. Whitman

G.C. Whitman, Assistant Chief of Police.

PATROL
DIVISION




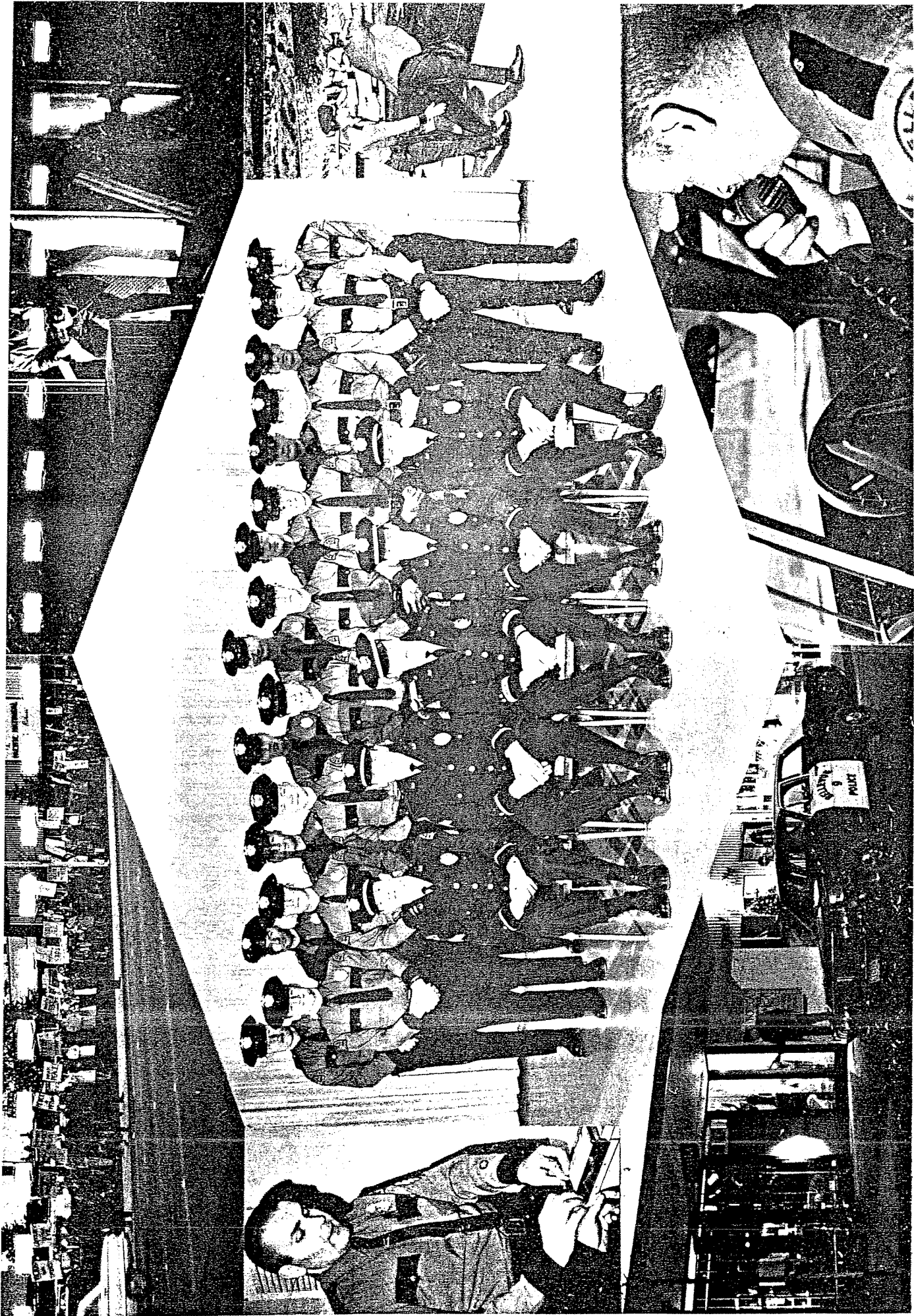
The Patrol Division, largest and oldest Division in the Bellevue Police Department, has the broadly described responsibility of providing a deterrent to violators, investigation of those violations which may occur and all the myriad services related thereto.

As the primary component of the Department operation, it is responsible for twenty-four hour coverage of the City and as such, it is supplemented by the specialist activities of the Traffic, Detective and Services Divisions. Patrol Division personnel operate mobile units in specifically assigned patrol districts, where they are within immediate reach of any emergency call and assume responsibility for all situations requiring Police attention. These may be as varied as response to a burglary in progress, investigation of a traffic accident, search for a lost child or report of a hazardous condition requiring corrective action by another City Department.

Most newly employed Patrolmen are initially assigned to the Patrol Division where they may obtain a wide range of experience in all aspects of Police Service.

The Patrol Division strives to provide a professional level of service to the public whenever and wherever required.


D.P. Van Blaricom, Captain



TRAFFIC
DIVISION

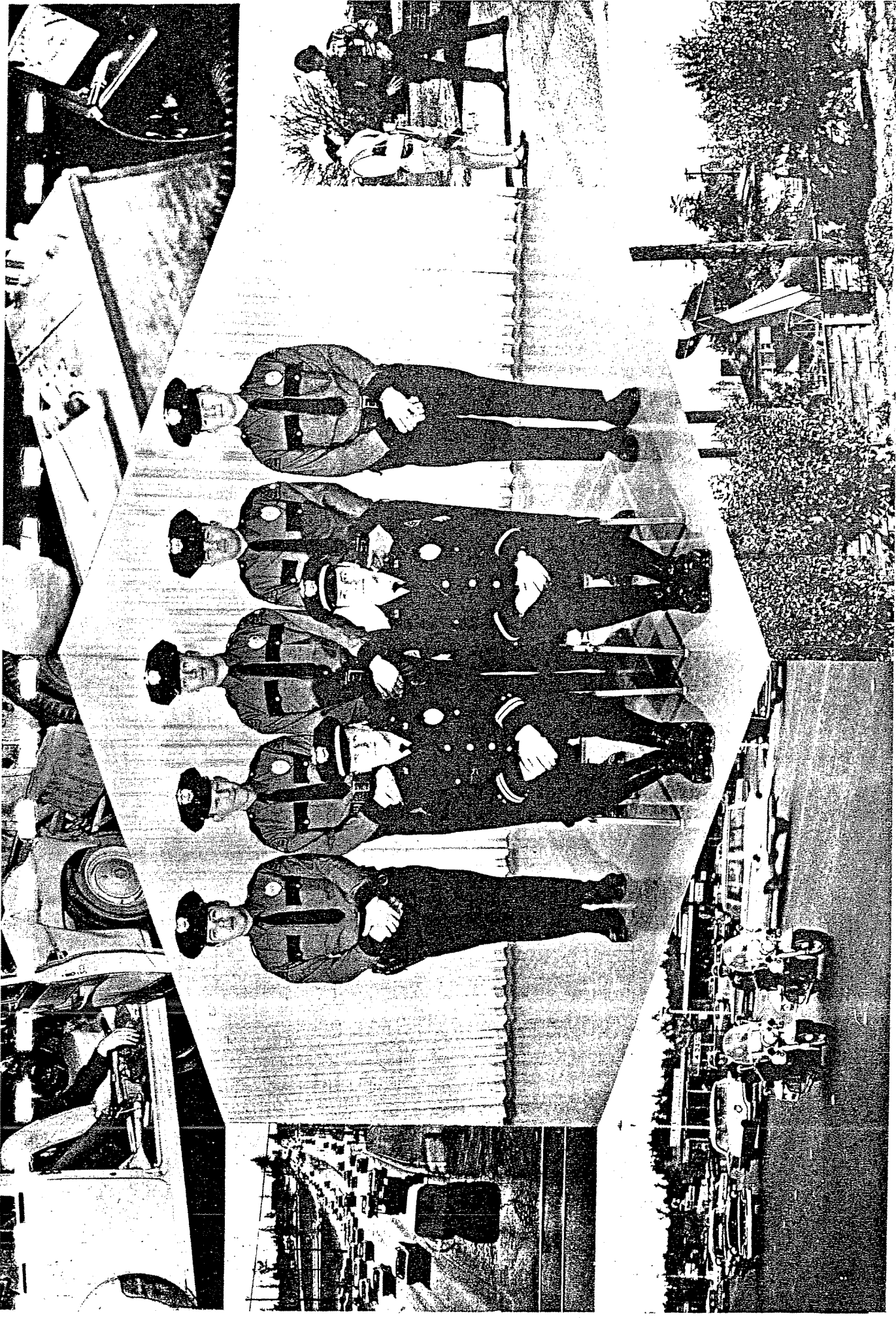


The Traffic Division was created by order of the Chief of Police in August, 1965 to accomodate the increase in traffic activity within the jurisdiction of the Bellevue Police Department, particularly in the category of vehicle accidents.

The Division is responsible for the promotion of traffic safety and strives to accomplish this function by enforcement of accident causing violations, consultation with the Engineering Department on needed improvements in the traffic pattern, participation in the high school driver education programs, assistance with the School Safety Patrol program and talks to various citizen groups. In spite of such efforts, accidents continue to occur and these are investigated to determine causes. The investigation is intended not only to assign liability, but also to discover means by which similar future accidents can be prevented. Prevention of accidents is the primary responsibility of the Division and constitutes its reason for existence.

The Traffic Division maintains an accident records section which indicates areas of need and operational effectiveness so that available resources will be applied where they will gain the most beneficial results.


H.E. Corkrey, Captain



DETECTIVE
DIVISION




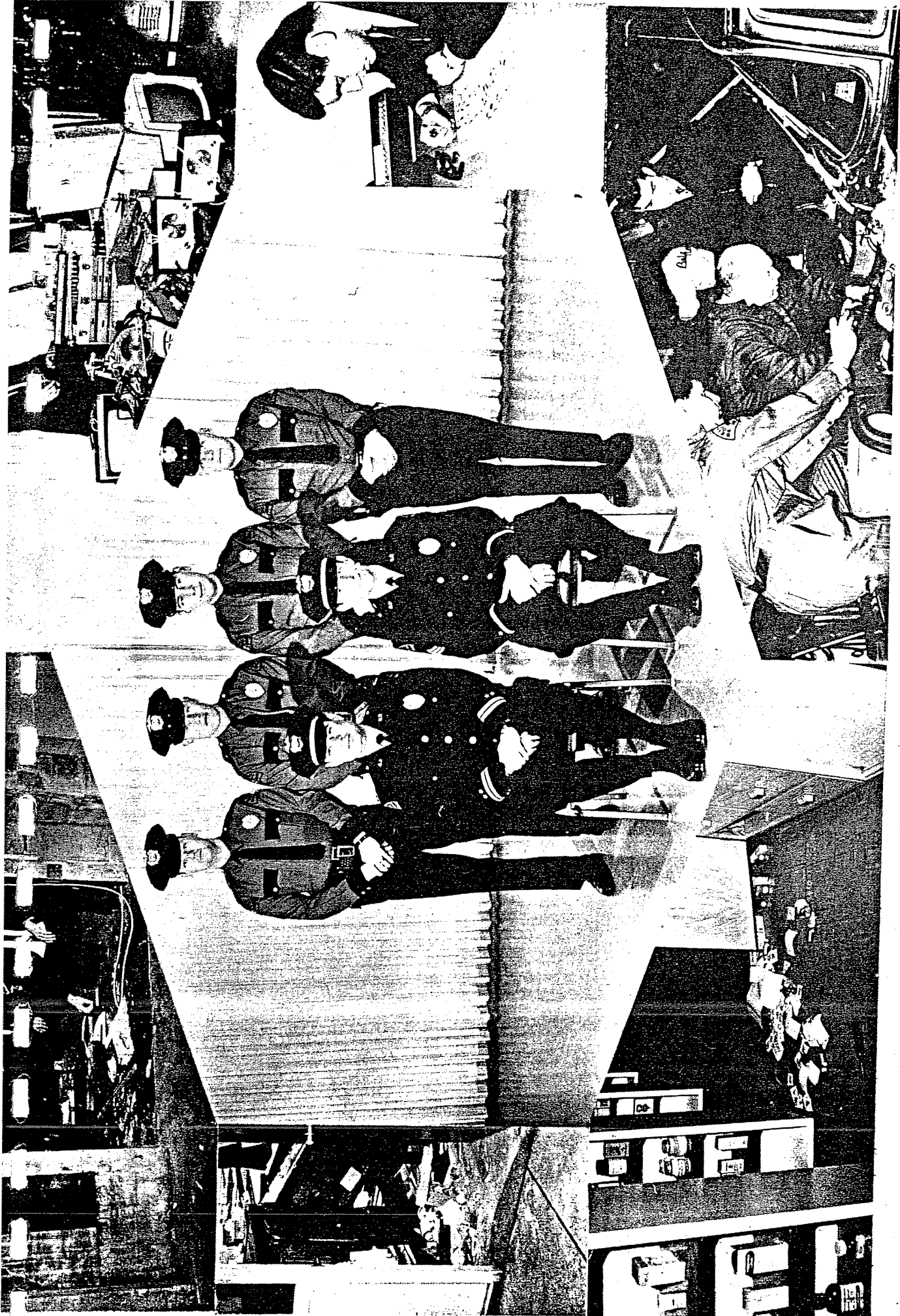
The Detective Division was established early in the development of the Bellevue Police Department organization and has expanded with the requirements of increased activity in the investigative area of responsibility.

The Division has primary responsibility for three sections and these are: criminal investigation, juvenile and intelligence. Criminal investigation includes the follow up investigation of all felonies and many misdemeanors, which require special attention to effect a disposition. Each must be reviewed, investigated in an effort to identify the person responsible and prepared for prosecution in court. Juvenile includes the review of all complaints involving juvenile suspects to determine the individual circumstances and make a decision on whether there should be a referral to Juvenile Court or reliance upon parental supervision with Police assistance. Intelligence includes the compilation of information on active criminals and their operations so that they can be more effectively investigated.

To fulfill their assigned responsibilities, Division personnel must maintain a close liaison relationship with Police and other official agencies for mutual assistance.

The Detective Division strives to maintain the highest rate of complaint clearance possible.


C.A. Meyer, Captain



SERVICES

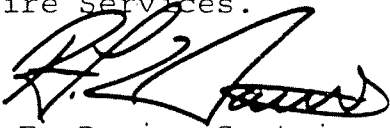
DIVISION

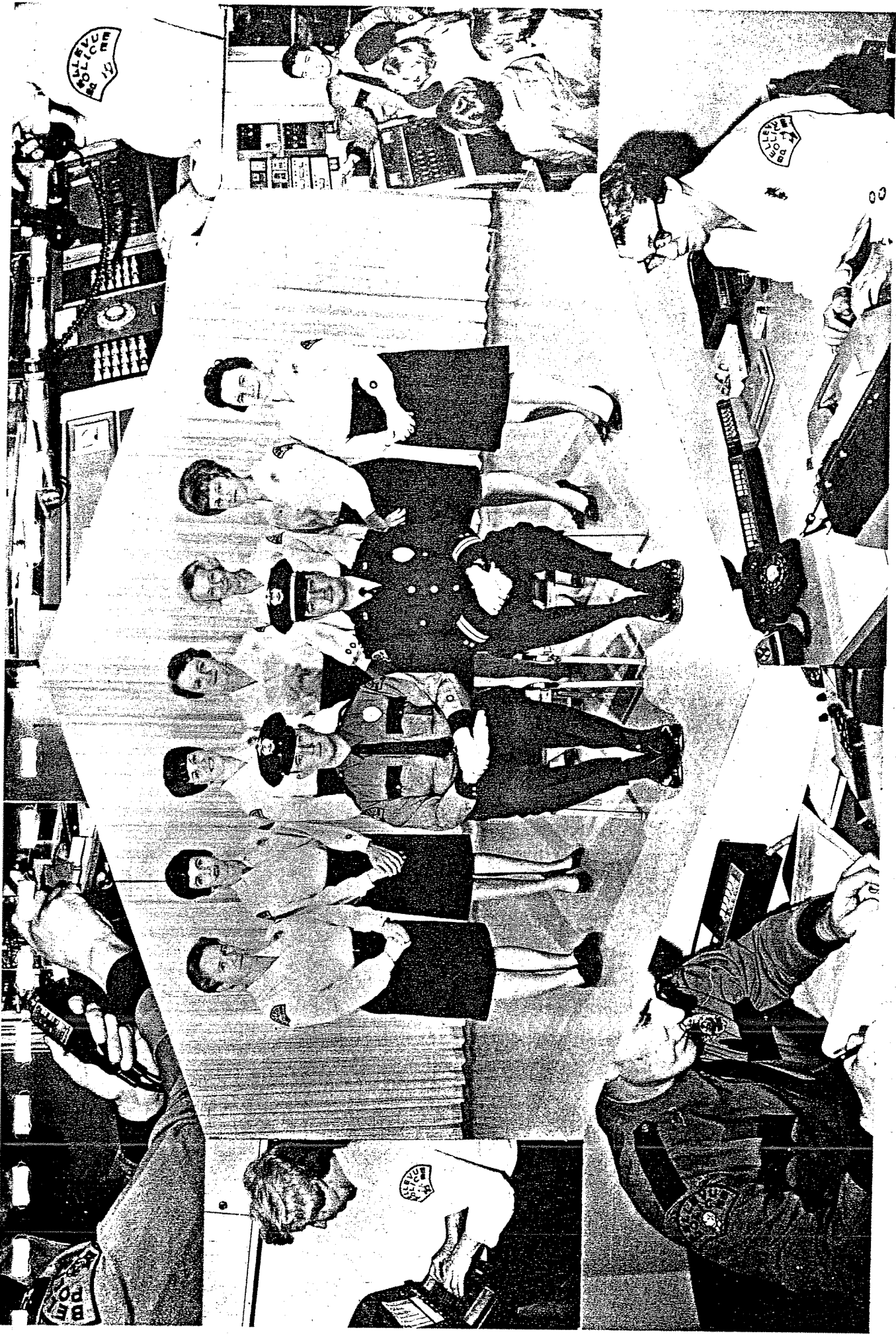


The Services Division was created by order of the Chief of Police in July 1964 to accommodate the expanding activities of the Bellevue Police Department.

The Division is responsible for all the supportive functions within the Department operation and exists to provide the means by which the Patrol, Traffic and Detective Divisions can accomplish their respective assignments. This includes the operation of the various communications facilities, compilation of records and statistical reports, recruitment of personnel, supply of materials and equipment, maintenance of vehicles and equipment, research and planning for operational improvement, warrant service and miscellaneous assignments as may be required. The women assigned to the Division perform all Department clerical and secretarial functions as well as providing assistance with the processing of female prisoners.

Two of the Division accomplishments are: revision of the reporting system to provide a comprehensive digest of activity and coordination of a new communications center for Police and Fire Services.


R.F. Davis, Captain



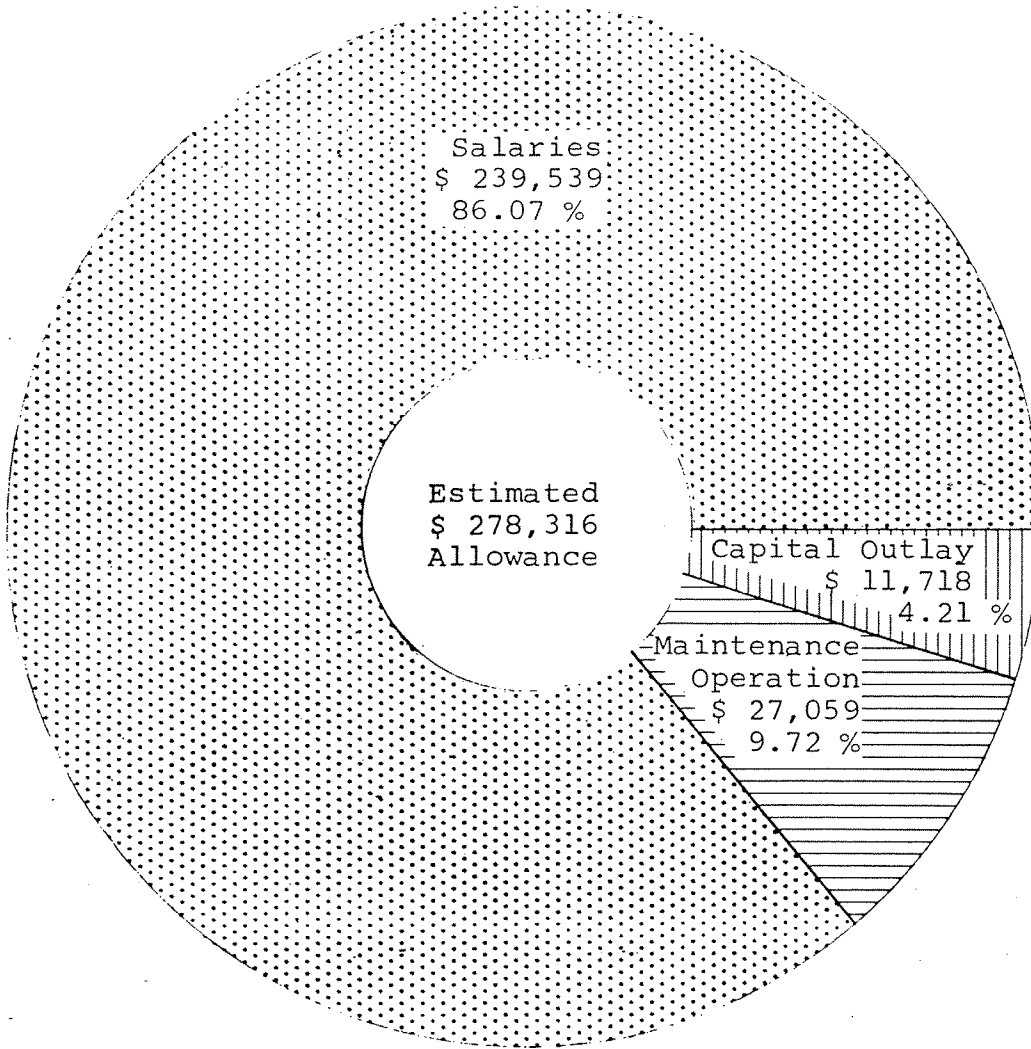
SECTION II

STATISTICAL INFORMATION

BUDGET ALLOWANCE

The budget allowance of the Bellevue Police Department was \$ 278,316 and this was 10.72 % of the total City of Bellevue budget allowance.

This represents a per capita cost of \$ 10.44 for Police services, (a reduction of .17¢ from 1966).



COMPLAINTS - ARRESTS

TYPE OF ACTIVITY	COMPLAINTS		ARRESTS			
	1966	1967	Adult 1966	Adult 1967	Juv 1966	Juv 1967
1-ANIMALS						
A-Vicious	49	48				
B-Other	47	26				
2-ARSON	14	19			8	4
3-ASSAULT						
A-1st & 2nd degree	5	11	4	14		2
B-3rd degree	38	53	4	14	14	5
C-Threatened	15	15				
D-Other	1	1				
4-ASSISTANCE						
A-Official agency	100	85	65	28	19	26
B-Other	12	13				
5-BURGLARY						
A-Commercial	78	208	3	16	5	16
B-Residence	92	143	4	1	8	9
C-Public agency	8	20				6
D-Poss. burglar tools	1		2			
E-Other	18	40		2	10	1
6-DISTURBANCE						
A-Civil dispute	13	17				

COMPLAINTS - ARRESTS (CONT)

TYPE OF ACTIVITY	COMPLAINTS		ARRESTS			
	1966	1967	Adult 1966	Adult 1967	Juv 1966	Juv 1967
B-Disorderly conduct						
1-Fighting	18	23	5	7	1	
2-Other	42	21	15	11	6	2
C-Domestic	55	61				
D-Other	10	10				2
7-ESCAPEE						
A-From custody						
B-Apprehension	1	1				2
8-EXTORTION						
9-FORGERY	13	19	8	22		3
10-HOMICIDE						
A-Murder						
B-Other (except 25)	1					
11-INJURY TO PROPERTY						
A-Malicious	299	358	1	2	9	6
B-Other (except 25)	14	10				
12-KIDNAPPING						
13-LARCENY						
A-Petit						
1-Bank check	220	175	22	11		

COMPLAINTS - ARRESTS (CONT)

TYPE OF ACTIVITY	COMPLAINTS		ARRESTS			
	1966	1967	Adult 1966	Adult 1967	Juv 1966	Juv 1967
4-All other						
a-By auto prowl	18	32		2		
b-From boat	5	4				
c-From coin box		1				
d-By fraud	27	23	1	2		
e-By shoplift	12	16	1	3	1	
f-By other method	77	96	4	4		1
14-LICENSE VIOLATION	2	2				
15-LIQUOR						
A-Minor poss	66	54	97	73	67	84
B-Supply to minor	3	7	6	18		
C-Drunk (except 25)	37	58	49	70	3	10
D-Other	1		3			
16-JUVENILE						
A-Curfew	26	21			54	56
B-CTDOJ (except 15)	4	5	6	9		
C-Dependent child	6	9			7	6
D-Incorrigible	14	10			12	5
E-Runaway	37	41			17	8
F-Other	10	8			2	1

COMPLAINTS - ARRESTS (CONT)

TYPE OF ACTIVITY	COMPLAINTS		ARRESTS			
	1966	1967	Adult 1966	Adult 1967	Juv 1966	Juv 1967
17-MISCELLANEOUS	33	27	14	20	6	5
18-NUISANCE	60	61				
19-PROWLER	68	90				1
20-QUESTIONABLE ACTION	132	117				
21-ROBBERY						
A-Armed	5	1	3			
B-Other		6				
22-SEX						
A-Homosexual act		2		1		
B-Indecent exposure	17	19	2	4	1	
C-Indecent liberties	3	6		1	1	
D-Obscenity						
1-By telephone	22	35				
2-Other	7	3				
E-Rape						
1-Forcible	2	3		4		
2-Statutory	1					
F-Other		2				
23-STOLEN PROPERTY						
A-Possession					7	1

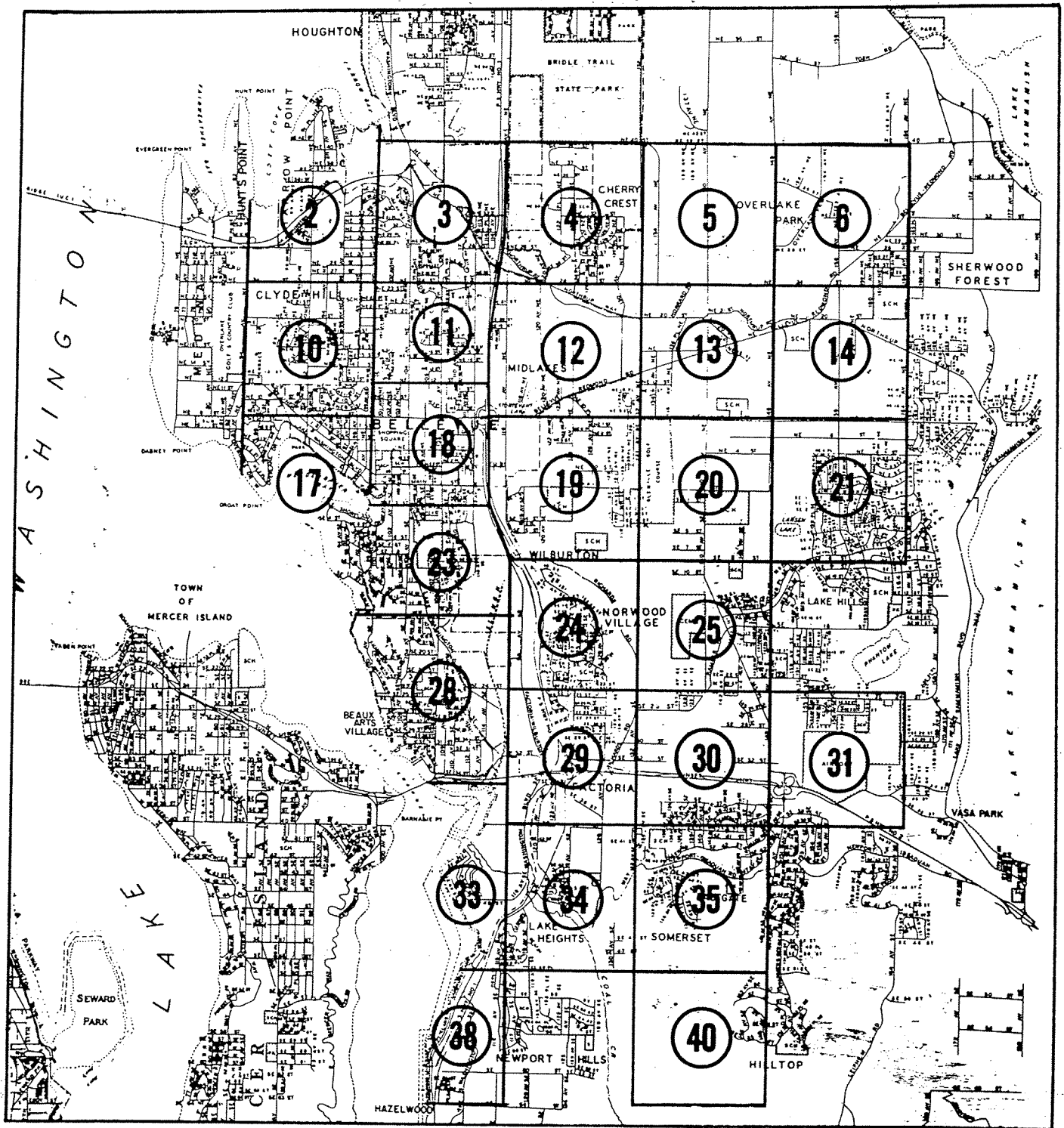
COMPLAINTS - ARRESTS (CONT)

TYPE OF ACTIVITY	COMPLAINTS		ARRESTS			
	1966	1967	Adult 1966	Adult 1967	Juv 1966	Juv 1967
B-Recovery						
1-Auto	7	10	3	4	1	4
2-Motorcycle		1				
3-Other lic veh						
4-Other	1	3				
24-SUICIDE						
A-Threatened	4	9				
B-Attempted	22	18	1	5	2	
C-Completed	1					
25-TRAFFIC						
A-Motor vehicle	1215	1389	253	285	16	6
B-Marine		1				
C-Aircraft	3	3				
26-TRESPASS						
A-Solicitor						
B-Other	3	3		1		
27-VAGRANCY	3	3	3	7		
28-VICE						
A-Gambling	1		1			
B-Narcotics	23	63	6	26	3	20
C-Prostitution						

COMPLAINTS - ARRESTS (CONT)

TYPE OF ACTIVITY	COMPLAINTS		ARRESTS			
	1966	1967	Adult 1966	Adult 1967	Juv 1966	Juv 1967
29-WEAPONS						
A-Unlawful carry	3	1				3
B-Other	2	3				
30-NON CRIMINAL						
A-Death	5	4				
B-Injury or illness	4	9				
C-Mental disorder	9	5	2			
D-Missing (except 16E)	13	4				
E-Property lost	29	53				
F-Property found	97	111				
G-Other	9	7	6	7		
TOTALS	4020	5014	651	818	348	400

COMPLAINT ZONES



COMPLAINTS - ARRESTS (CONT)

COMPLAINT VALUES:

	1966	1967
Stolen property	\$ 170,583	\$ 360,631
Damaged property	\$ 15,057	\$ 24,826
Recovered property	\$ 58,487	\$ 95,862

COMPLAINTS BY ZONE:

	1966	1967		1966	1967
Zone 2	29	106	Zone 21	*	42
Zone 3	136	137	Zone 23	210	246
Zone 4	57	60	Zone 24	128	118
Zone 5	5	17	Zone 25	21	81
Zone 6	38	41	Zone 28	194	218
Zone 10	88	116	Zone 29	221	228
Zone 11	168	194	Zone 30	66	94
Zone 12	144	133	Zone 31	88	259
Zone 13	150	205	Zone 33	10	29
Zone 14	173	386	Zone 34	5	5
Zone 17	139	179	Zone 35	*	48
Zone 18	1633	1692	Zone 38	6	4
Zone 19	172	278	Zone 40	*	0
Zone 20	*	21	Station	139	177

* Zones annexed during 1967

COMPLAINTS - ARREST (CONT)

COMPLAINTS BY MONTH:

	1966	1967		1966	1967
January	247	328	July	319	427
February	238	406	August	342	428
March	292	390	September	348	404
April	329	366	October	397	443
May	270	402	November	366	519
June	355	359	December	517	542

COMPLAINTS BY DAY OF WEEK:

	1966	1967		1966	1967
Sunday	372	561	Thursday	585	668
Monday	522	605	Friday	825	926
Tuesday	512	691	Saturday	672	873
Wednesday	532	690			

COMPLAINTS BY HOUR OF DAY:

	1966		1967
0400 - 1200	647	0400 - 0500	44
		0500 - 0600	13
		0600 - 0700	32

COMPLAINTS - ARRESTS (CONT)

COMPLAINTS BY HOUR OF DAY (CONT):

	1966		1967
		0700 - 0800	78
		0800 - 0900	103
		0900 - 1000	85
		1000 - 1100	100
		1100 - 1200	141
1200 - 2000	1978	1200 - 1300	162
		1300 - 1400	201
		1400 - 1500	204
		1500 - 1600	251
		1600 - 1700	276
		1700 - 1800	214
		1800 - 1900	142
		1900 - 2000	157
2000 - 0400	1395	2000 - 2100	153
		2100 - 2200	163
		2200 - 2300	130
		2300 - 2400	129
		2400 - 0100	141
		0100 - 0200	121
		0200 - 0300	101
		0300 - 0400	64
*		Day, hour unknown	550

COMPLAINTS - ARRESTS (CONT)

COMPLAINTS BY HOUR OF DAY (CONT):

	1966		1967
*		Night, hour unknown	425
*		Time unknown	834

* Not recorded in 1966

COMPLAINTS INCLUDED:

	1966	1967
Physical assault of officer	11	6
Use of a weapon	33	23
Use of narcotics (except traffic)	50	72
Use of intoxicants (except traffic)	229	212
Use of telephone	*	56
City park	20	13
Motor vehicles impounded	302	398

* Not recorded in 1966

COMPLAINTS - ARRESTS (CONT)

ARRESTS BY MONTH:

ADULTS

JUVENILES

	1966	1967		1966	1967
January	59	44	January	16	35
February	60	65	February	22	32
March	58	84	March	31	19
April	63	57	April	28	28
May	72	70	May	25	43
June	56	47	June	39	36
July	45	47	July	30	33
August	32	78	August	19	42
September	42	76	September	29	33
October	54	75	October	50	39
November	51	92	November	35	32
December	59	83	December	24	28

ARRESTS BY AREA OF RESIDENCE:

ADULTS

JUVENILES

	1966	1967		1966	1967
Bellevue	141	175	Bellevue	139	147
Greater Bellevue	107	154	Greater Bellevue	100	121
Outside	403	489	Outside	109	132

COMPLAINTS - ARRESTS (CONT)

ARRESTS BY TYPE:

ADULTS

JUVENILES

	1966	1967		1966	1967
Criminal-on view	248	389	Criminal-on view	311	368
Criminal-warrant	85	116	Criminal-warrant	2	0
Traffic-on view	105	92	Traffic-on view	16	5
Traffic-warrant	148	193	Traffic-warrant	0	1
For other agency	65	28	For other agency	19	26

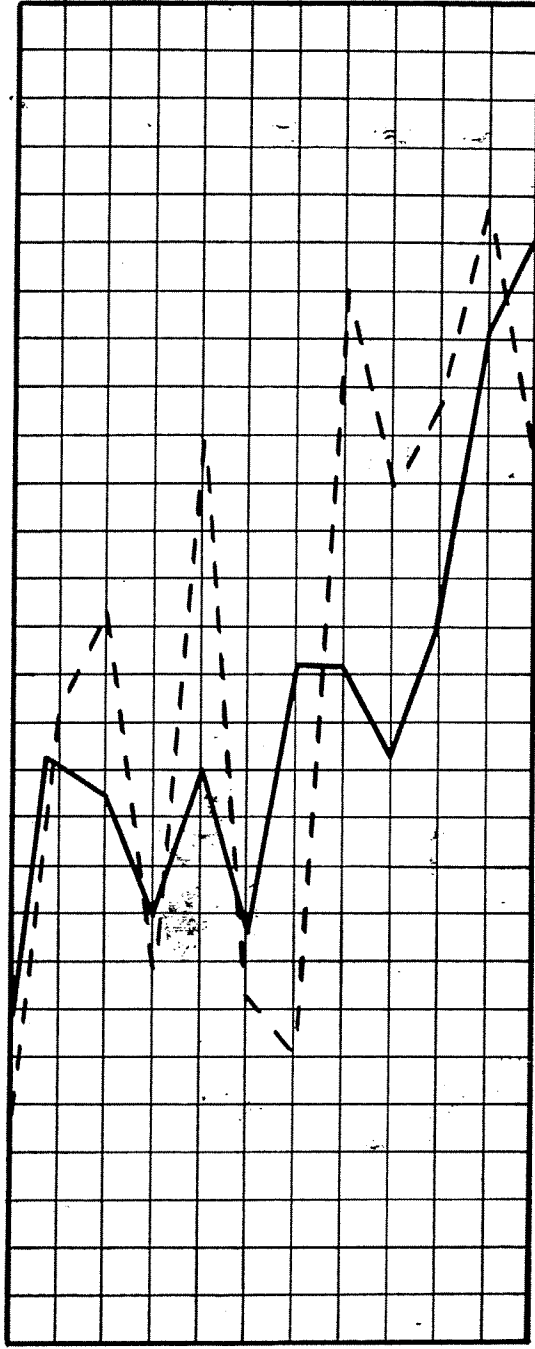
ARRESTS BY POLICE DISPOSITION:

ADULTS

JUVENILES

	1966	1967		1966	1967
Posted bail	288	390	To parents	268	305
To jail	144	202	To Youth Center	52	61
To other agency	65	28	To other agency	19	26
P.R.'d	124	131	P.R.'d	0	0
Released	22	56	Released	3	4
Other	8	11	Other	6	4

January
 February
 March
 April
 May
 June
 July
 August
 September
 October
 November
 December



5014

Complaint 250 275 300 325 350 375 400 425 450 475 500 525 550 575 600

1218

Arrest 65 70 75 80 85 90 95 100 105 110 115 120 125 130 135

COMPLAINTS - ARRESTS

YEAR OF 1967

MOTOR VEHICLE ACCIDENTS

ALL ACCIDENTS:

	1966	1967
Total reported	713	864
Investigated by police	542	615
Citizen report (no invest)	171	249
Fatalities	4	0
Persons injured	415	435
Pedestrian involved	4	11
Bicycle involved	7	10
Hit and run	20	19

VIOLATIONS CAUSING GREATEST NUMBER OF ACCIDENTS:

	1966	1967
Failure to yield	32.0 %	33.3 %
Follow too close	20.2 %	15.3 %

ACCIDENT VALUES:

	1966	1967
Vehicles and property	\$ 370,974	\$ 428,341

MOTOR VEHICLE ACCIDENTS (CONT)

ACCIDENTS BY MONTH:

	1966	1967		1966	1967
January	51	76	July	42	68
February	44	61	August	53	54
March	38	66	September	50	60
April	53	57	October	74	94
May	47	59	November	94	97
June	56	64	December	111	108

ACCIDENTS BY DAY OF WEEK:

	1966	1967		1966	1967
Sunday	59	73	Thursday	106	108
Monday	112	108	Friday	127	159
Tuesday	91	135	Saturday	116	141
Wednesday	102	140			

ACCIDENTS BY HOUR OF DAY:

	1966	1967		1966	1967
0400 - 0500	4	3	0800 - 0900	32	39
0500 - 0600	4	1	0900 - 1000	22	28
0600 - 0700	7	5	1000 - 1100	26	29
0700 - 0800	49	47	1100 - 1200	25	33

MOTOR VEHICLE ACCIDENTS (CONT)

ACCIDENTS BY HOUR OF DAY (CONT):

	1966	1967		1966	1967
1200 - 1300	33	59	2000 - 2100	22	30
1300 - 1400	25	45	2100 - 2200	33	34
1400 - 1500	48	46	2200 - 2300	19	24
1500 - 1600	50	86	2300 - 2400	25	16
1600 - 1700	67	98	2400 - 0100	30	23
1700 - 1800	83	89	0100 - 0200	11	16
1800 - 1900	42	36	0200 - 0300	11	18
1900 - 2000	41	51	0300 - 0400	4	8

TRAFFIC ENFORCEMENT

ENFORCEMENT ACTION TAKEN:

	1966	1967
Moving citations	4327	5208
Adults	3960	4559
Juveniles	367	649
Parking citations	92	201
Warnings	5721	8118

CITATIONS BY MONTH:

	1966	1967		1966	1967
January	389	471	July	302	401
February	380	326	August	276	482
March	415	355	September	354	474
April	363	305	October	386	454
May	367	320	November	390	596
June	304	370	December	401	654

TRAFFIC ENFORCEMENT (CONT)

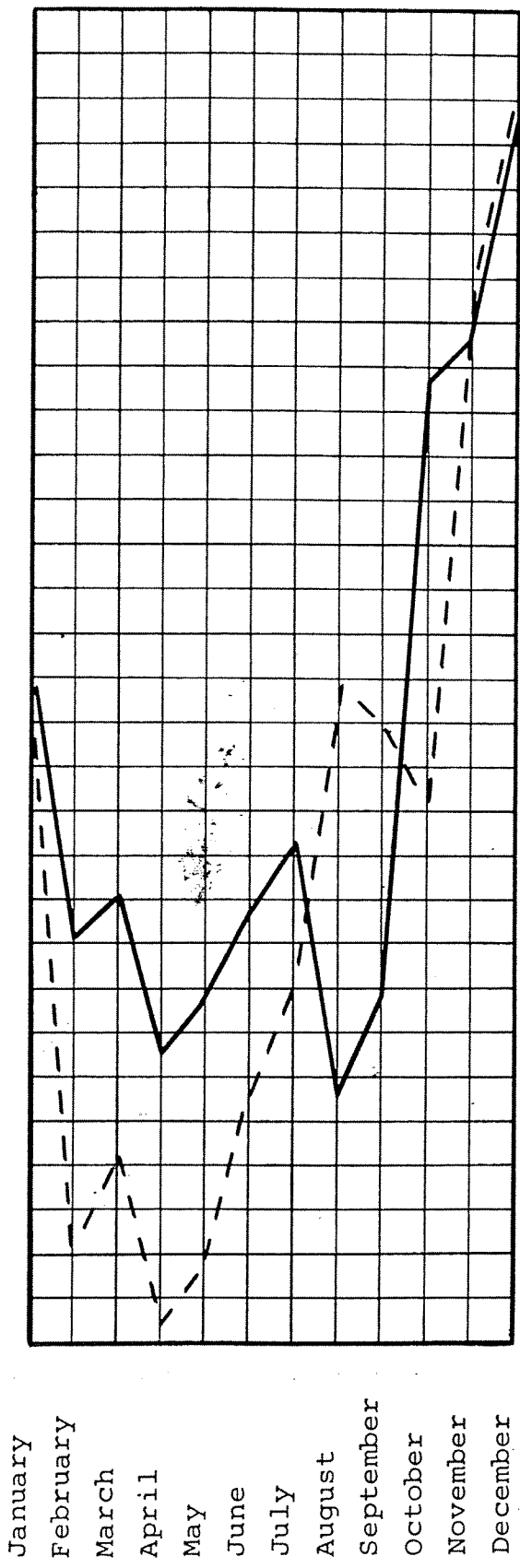
CITATIONS BY DAY OF WEEK:

	1966	1967		1966	1967
Sunday	*	676	Thursday	*	701
Monday	*	643	Friday	*	869
Tuesday	*	677	Saturday	*	1050
Wednesday	*	592			

* Not recorded in 1966

CITATIONS BY HOUR OF DAY:

	1966	1967		1966	1967
0400 - 0500	26	31	1600 - 1700	392	371
0500 - 0600	35	45	1700 - 1800	329	309
0600 - 0700	37	67	1800 - 1900	190	275
0700 - 0800	162	189	1900 - 2000	151	203
0800 - 0900	203	238	2000 - 2100	162	229
0900 - 1000	185	177	2100 - 2200	203	302
1000 - 1100	172	260	2200 - 2300	188	246
1100 - 1200	235	310	2300 - 2400	163	200
1200 - 1300	240	300	2400 - 0100	166	183
1300 - 1400	256	311	0100 - 0200	109	156
1400 - 1500	245	310	0200 - 0300	91	100
1500 - 1600	324	342	0300 - 0400	63	54



864
Accidents 40 45 50 55 60 65 70 75 80 85 90 95 100 105 110 115

5208
Citations 300 325 350 375 400 425 450 475 500 525 550 575 600 625 650 675

ACCIDENTS - CITATIONS

YEAR OF 1967

MISCELLANEOUS ACTIVITY

	1966	1967
Field contacts:		
Adults	682	932
Juveniles	688	1013
Calls for service answered	8781	9299
Follow up investigations conducted	4093	4016
Escorts provided	847	320
Open buildings discovered	758	3620
Bank checks made	* 2089	3658
Vacation house checks made	2211	5697
City parks checks made	1723	3826
Assist to public	2696	2865
Persons toured thru department	381	567
Public speaking engagements	38	104
Breathalyzer examinations made	64	42
Identifications processed	207	417
Ammunition expended in training:		
.38 special revolver	11175	14661
.45 ACP submachine gun	300	925
12 gauge riot gun	115	493

* Started May 1966

MAN HOURS DISTRIBUTION

REGULAR HOURS:

	1966	1967
Scheduled	60368	70912
Worked	53532½	65845
Leave	6835½	5067

DISTRIBUTION OF REGULAR HOURS:

	1966	1967
Patrol	12491½	13720
Complaint taking	2316½	2999½
Follow up investigation	5119½	5169½
Accident investigation	1078	1132
Traffic enforcement	5345½	6865
Communications and clerical	10162½	11998
Special assignment	1796	2494
Training	1201	5021
Court	407½	472
Officer assistance	1399½	3080
Services	3780½	3668
Records	2016½	1017

MAN HOURS DISTRIBUTION (CONT)

DISTRIBUTION OF REGULAR HOURS (CONT):

	1966	1967
Supervision and administration	6418	8209
Compensatory leave	1148	620½
Sick leave	1479½	1286½
Vacation leave	4208	3160

OVERTIME HOURS:

	1966	1967
Unscheduled	3038	4637
Non-compensated	1890	4016½

DISTRIBUTION OF OVERTIME HOURS:

	1966	1967
Training	250½	355
Court	308	70
Other	2479½	4212

VEHICLE OPERATION

MOTOR VEHICLE FLEET:

Car 1 - 1964 Falcon	Car 7 - 1967 Ford
Car 2 - 1964 Falcon	Car 8 - 1967 Ford
Car 3 - 1967 Ford	Car 9 - 1967 Ford
Car 4 - 1967 Ford	M/C 1 - 1966 Harley Davidson
Car 5 - 1965 Ford	M/C 2 - 1968 Harley Davidson
Car 6 - 1967 Ford	

OPERATIONAL MILEAGE:

	1966	1967
Total miles travelled	216,596	247,361
Average daily mileage	593	678



SECTION III
SPECIAL REPORT
ON
TRAINING



SPECIAL REPORT ON TRAINING

The Bellevue Police Department placed particular emphasis on training during the year 1967 and this special report on that effort will present the most important areas of achievement.

Training responsibility has become especially acute with the increased demands for Police Service, resulting from a rising crime rate and the requirement for a highly professional approach to this problem in our complex society. Such responsibility has been met by a coordinated program, which included the following.

BELLEVUE POLICE ACADEMY:

The Bellevue Police Academy was expanded to six weeks of intensive training that must be successfully completed by all newly appointed Patrolmen. The below listed schedule of subjects is presented with the hours indicated for each:

<u>Subject</u>	<u>Hours</u>
Orientation	4
Rules and Regulations	2
History of Law Enforcement	4
Office Procedures	4
Department Reports and Records	4
Complaint Taking	4
Report Writing	4
Fingerprints	4
Scientific Aids and Photography	4
Criminal Code	16
Preliminary Investigation	8
Arrest, Search and Seizure	8

SPECIAL REPORT ON TRAINING (CONT)

BELLEVUE POLICE ACADEMY (CONT):

<u>Subject</u>	<u>Hours</u>
Interrogation	4
Case Preparation	2
Court Testimony	2
Patrol Procedure	24
Court Structure and Criminal Justice	6
Public Relations and Civil Rights	2
K.C. Coroner Autopsy	2
K.C. Jail Visit	2
K.C. Youth Center Visit	4
Juvenile	8
Riot Drill	8
First Aid	30
Traffic Function	2
Traffic Code	4
Emergency Driving	8
Traffic Enforcement	8
Accident Investigation	12
Breathalyzer Operation	8
Physical Combat	16
Firearms Safety	2
Firearms Proficiency	16
Narcotics	4
Water Safety	8

SPECIAL REPORT ON TRAINING (CONT)

BELLEVUE POLICE ACADEMY (CONT):

<u>Subject</u>	<u>Hours</u>
Review and Examination	8
	<hr/>
Total Hours	256

Upon completion of the training period, each student must have scored a minimum grade of 70.0 % on: Vehicle Operation, Firearms Qualification, Notebook Inspection and the Final Examination; with a minimum overall average of 77.5 %, a C-.

COLLEGE ACCREDITATION:

College accreditation was officially obtained for the Bellevue Police Academy and all students who successfully complete the course of instruction with a 2.5 accumulated grade point average, receive 15 college credits applicable to an Associate Law Enforcement degree. In addition, the first aid portion of the training is a registered Health Education 292 course which earns another 3 college credits, giving the graduate a total of 18 credits towards his college education. These credits are applicable at the conveniently located Bellevue Community College, where a Law Enforcement program has been established that will award an Associate degree to in-service personnel who accumulate 94 credits in a specified course of instruction for Police Officers.

EDUCATION INCENTIVES:

A two point program was approved by the Bellevue City Council and the Bellevue Civil Service Commission which provides salary increases above base pay for specified levels of college education and also requires such education for promotion. This program, as authorized, is as follows:

Approved fields of study are limited to only those which have a direct relationship to Police Service and these are:

1. Police Science (Law Enforcement)
2. Political Science
3. Sociology

SPECIAL REPORT ON TRAINING (CONT)

EDUCATION INCENTIVES (CONT):

Reduced credit will be given however, for all other fields of study, since any college training has an inherent value for improving an individual's relative worth.

In consideration of the above, six levels of college attainment will be recognized for the purpose of implementing this plan. These are:

Education "1 A" -

Accumulation of 45 college credits (quarter system) towards an Associate degree or Bachelor degree in an approved field of study.

Education "1 B" -

Attainment of an Associate degree in an approved field of study or accumulation of 90 college credits (quarter system) towards a Bachelor degree in an approved field of study.

Education "1 C" -

Attainment of a Bachelor degree in an approved field of study.

Education "2 A" -

Accumulation of 45 college credits (quarter system) towards an Associate degree or Bachelor degree in a field of study other than an approved field of study.

Education "2 B" -

Attainment of an Associate degree in a field of study other than an approved field of study or accumulation of 90 college credits (quarter system) towards a Bachelor degree in a field of study other than an approved field of study.

EDUCATION INCENTIVES (CONT):

Education "2 C" -

Attainment of a Bachelor degree in a field of study other than an approved field of study.

For purposes of promotional qualification, after January 1, 1968, all subsequently employed personnel will be required to attain a specified level of college education, in addition to a specified level of experience, before being qualified to apply for promotional examination. All personnel who have been hired prior to this date however, will continue to qualify for promotional examination by attainment of only the specified level of experience but can qualify sooner, if they attain the desired level of college education.

The pre-promotional qualifications are:

To Sergeant -

Hired prior to January 1, 1968:

3 years service as a Patrolman / or;
2 years service as a Patrolman and
education "1 A" / or "2 B".

Hired after January 1, 1968:

3 years service as a Patrolman and
education "1 A" / or "2 B".

To Captain -

Hired prior to January 1, 1968:

3 years service as a Sergeant / or;
2 years service as a Sergeant and
education "1 B" / or "2 C".

Hired after January 1, 1968:

3 years service as a Sergeant and
education "1 B" / or "2 C".

SPECIAL REPORT ON TRAINING (CONT)

EDUCATION INCENTIVES (CONT):

To Assistant Chief -

Hired prior to January 1, 1968:

1 year as a Captain.

Hired after January 1, 1968:

1 year as a Captain and education
"1 C".

It is anticipated that at some future time, additional ranks will be necessitated by Department expansion (Lieutenant, etc) and these will require their own qualifications for promotion, which may require adjustment in the presently established ranks, as listed above.

In addition to promotional opportunity, this plan will provide encouragement for continued college education by all in-service personnel by awarding salary increases commensurate with individual effort. The plan will also aid in the attraction of superior applicants who have demonstrated pre-service college achievements.

Salary increases relative to this plan will be designated as "Incentive Pay" and are:

Education "1 A" -

2½ % above base salary

Education "1 B" -

5 % above base salary

Education "1 C" -

8 % above base salary

Education "2 A" -

1½ % above base salary

EDUCATION INCENTIVES (CONT):

Education "2 B" -

3 % above base salary

Education "2 C" -

5 % above base salary

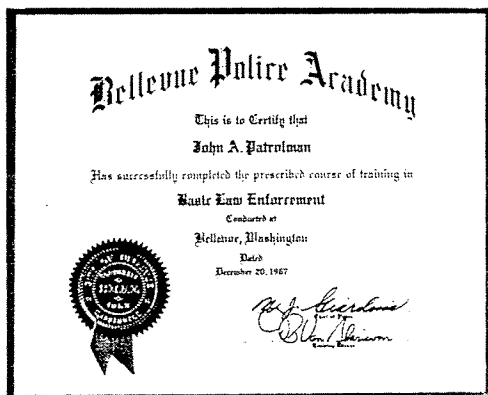
No employee hired after January 1, 1968 shall receive incentive pay until after satisfactory completion of one year service, but thereafter shall receive incentive pay as per schedule.

Incentive pay shall be applicable to all positions and ranks in the Police Department, as authorized by the City Council.

TUITION REIMBURSEMENT:

Tuition is reimbursed in full to each individual Officer upon successful completion, with a grade of C or better, of any college accredited course that is applicable to a Law Enforcement degree program.

The foregoing is intended as a progressive approach to improvement of intellectual standards for Police personnel and may be expected to provide a long range guarantee to the City of Bellevue that the highest quality men and women will be attracted, trained and retained in the Service of the Bellevue Police Department.



1967 ANNUAL REPORT

Direction and Approval:

N.J. Giardina, Chief
Bellevue Police Department

Form and Content:

D.P. Van Blaricom, Captain
Bellevue Police Department

Preparation:

F.M. Allen, Clerk I
Bellevue Police Department

Photography:

F.M. Anderson, Photographer
City of Bellevue Staff

Printing:

H.C. Gere, Machine Operator
City of Bellevue Staff