

1980 Annual Report

**Bellevue
Police Department
City of Bellevue
Washington**

**D.P. Van Blaricom,
Chief of Police**

CITY COUNCIL

Honorable Richard Foreman, Mayor
Honorable Mab Tocher, Mayor Pro-Tem
Honorable Cary Bozeman
Honorable Dru Briggs
Honorable Maria Cain
Honorable Mike Evered
Honorable Roy Ferguson

CITY MANAGER

Ms. Andrea Beatty

CIVIL SERVICE COMMISSION

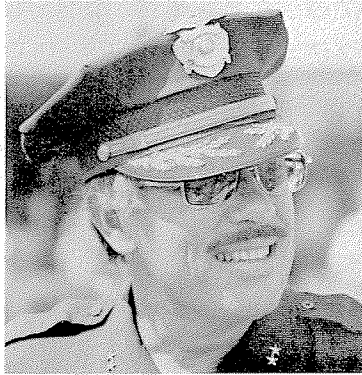
Mr. Earle Murray, Chairman
Ms. LaVerne Hall
Mr. Hank Curran
Ms. Marylee Landerholm
Mr. Harold Corkrey

ANNUAL STAFF

Lt. William G. Wehmeyer, Editor
Lt. Richard Sturza, Assistant Editor
Frank Anderson, Photographer
Kelly Smith, Graphics & Typesetting

Chief's Message-1980

Ms. Andrea Beatty, City Manager
City of Bellevue, Washington



Dear Ms. Beatty:

The past year of 1980 recorded the largest annual increase of serious crime in the City of Bellevue's history - almost 20% higher than for the preceding year!

Consequently, our citizens' chances of being victimized were substantially greater than ever before and moreover, those chances were increasing at a faster rate than in surrounding jurisdictions. With particular concern for crimes of violence, armed robbery (once a literally unheard of crime on the Eastside) increased by 38%, rape increased by 16%, and assault increased by 19%. In fact, we found ourselves having fallen to a position where a Bellevue resident's chance of being a crime victim at 1 in 12.5 was approaching Seattle's ratio of 1 in 9 and that is a sobering new reality for persons who would tend to nostalgically view our community as a suburb removed from big city problems.

What happened, of course, is that Bellevue literally "grew-up" and just as what was once rural changed to suburban in the 1960's, we are now experiencing the next change to urbanization in the 1980's with all of the social problems inherent in that transition. Unfortunately and as I had repeatedly warned for the past 5 years, your police department was not being provided with the necessary resources to keep pace with this area's phenomenal development. Not surprisingly then and as was reasonably predicted, crime increased markedly!

With a changed City Council and a new City Manager in place, however, first priority for the funding of local governmental services was abruptly shifted to public safety (fire and emergency medical too). Accordingly, our 1981 budget authorized the hiring of additional police officers to meet the growing awareness of crime and we are now in the catch-up mode of filling those positions with specially recruited personnel who are

already trained and experienced. In the meantime though, I have had to take officers out of various special assignments (i.e. - detectives, traffic, training, crime prevention and headquarters) for response to crime on the street and while we are managing some early gains there, we are currently losing ground in those areas where I have temporarily deleted personnel. By the last quarter of this year though, I expect all vacancies to be filled and the department's overall organization to be in balance again.

It is my hope to maintain that balance over the forthcoming years by continuing a phased allocation of resources which will reflect those increased demands upon us that are a natural byproduct of becoming ever more urban. Incidentally and even after our most recent personnel additions, we still remain at the lowest number of police per population among metropolitan area departments at 1.37, compared to the others' average of 1.73 - there is no fat here!

In 1981, our foremost goals will be an orderly personnel expansion while reversing the 1980 crime peak and continued cooperation with the public toward making Bellevue a safer living environment.

Respectfully yours,

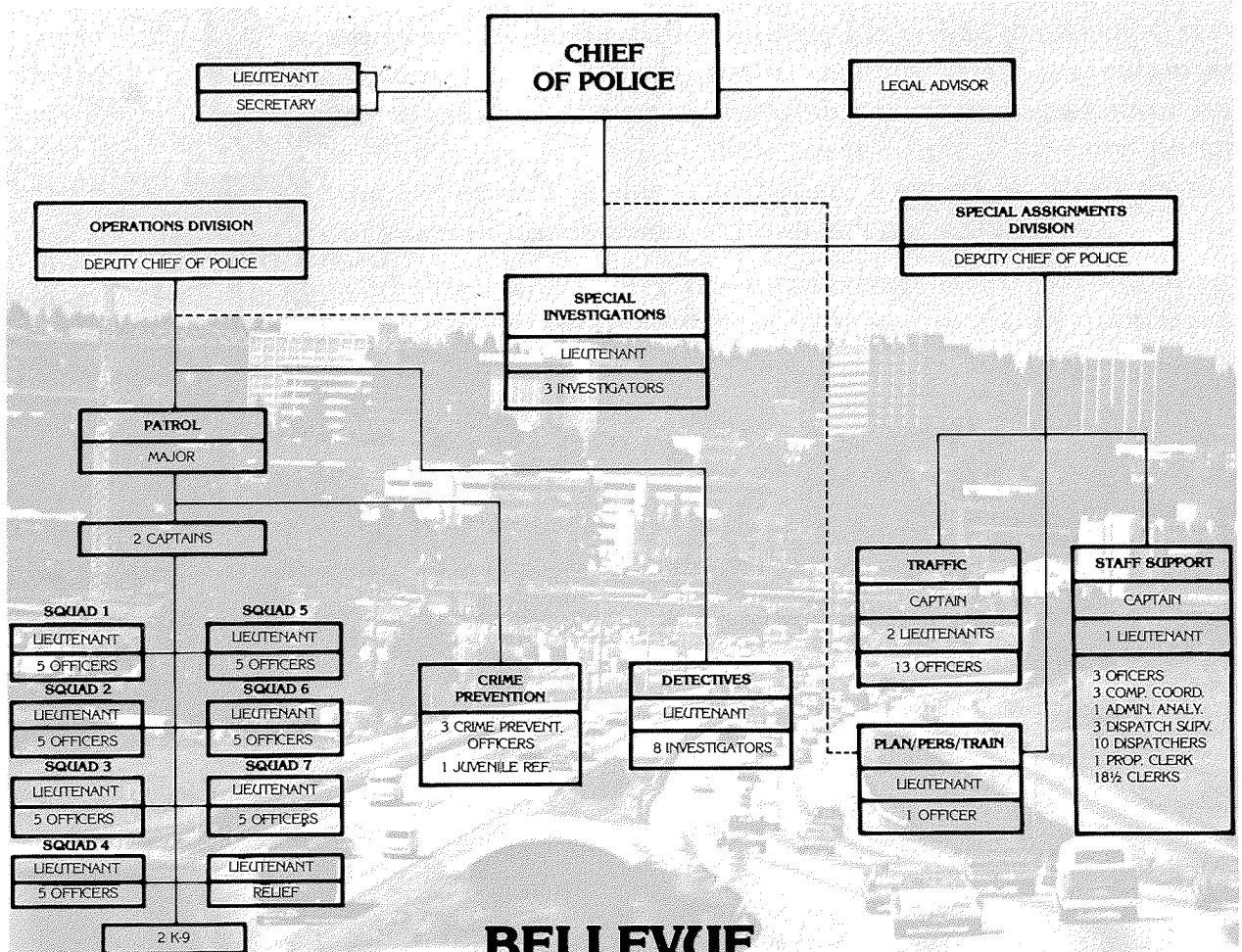


D.P. Van Blaricom
Chief of Police

Contents

City Council....	I
Chief's Message... III	III
Contents.....	1
Organizational Chart....	2
Personnel Profile....	3
Arrest Statistics....	4
UCR Crime Statistics....	5
Geographical Data....	6
Patrol....	9
Crime Prevention....	10
Detectives....	12
Youth Services....	13
Special Units....	14
K-9 Unit....	15
Hazardous Device Unit....	16
Traffic....	17
Planning/Personnel/Training....	18
Staff Support....	19
Employees Of The Year....	20

Organization Chart



BELLEVUE POLICE DEPARTMENT

1980

D.P. Van Blaricom
Chief of Police

TOTAL PERSONNEL 130½

CIVILIAN PERSONNEL

LEGAL ADVISOR	1
ADMINISTRATIVE ANALYST	1
DISPATCH SUPERVISOR	3
DISPATCHERS	10
SECRETARY	1
PROPERTY CLERK	1
CLERK - FULL TIME	17
CLERK - HALF TIME	1½
TOTAL	35½

POLICE (LEOFF) PERSONNEL

CHIEF OF POLICE	1
DEPUTY CHIEF OF POLICE	2
MAJOR	1
CAPTAIN	4
LIENANT	15
POLICE OFFICER	69
COMPLAINT COORD.	3
TOTAL	95

Personnel Profile

Police Department Personnel

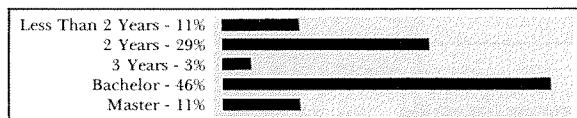
Years Of Service



Age Distribution

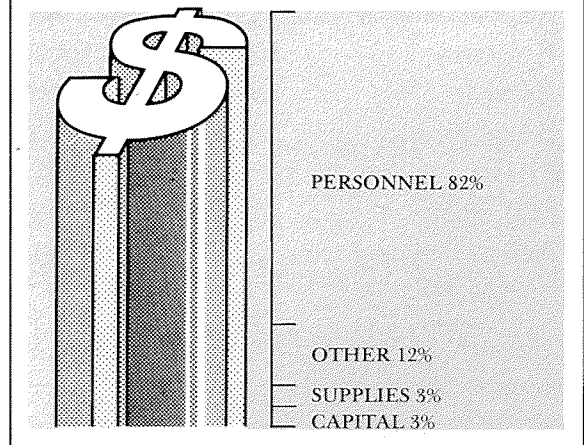


College Education

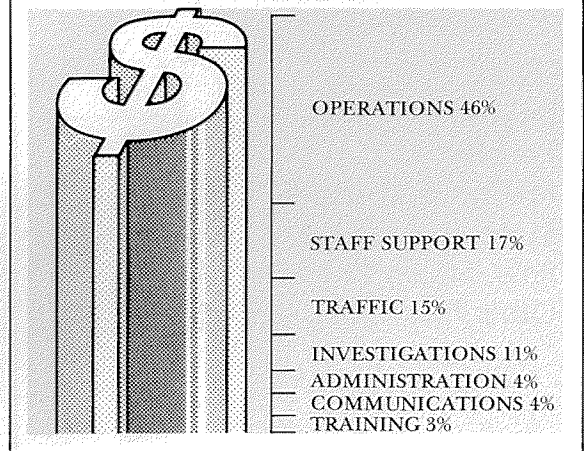


City Of Bellevue Police Department 1980 Budget \$4,054,109

EXPENDITURES



ALLOCATIONS



Arrest Statistics

ARREST STATISTICS

PART I

<u>CRIME</u>	<u>ADULT</u>	<u>JUV.</u>
Homicide	1	0
Rape	15	0
Robbery	12	11
Assault	80	20
Burglary	36	130
Theft	396	284
MV Theft	13	25
Arson	<u>2</u>	<u>3</u>
TOTAL:	555	473

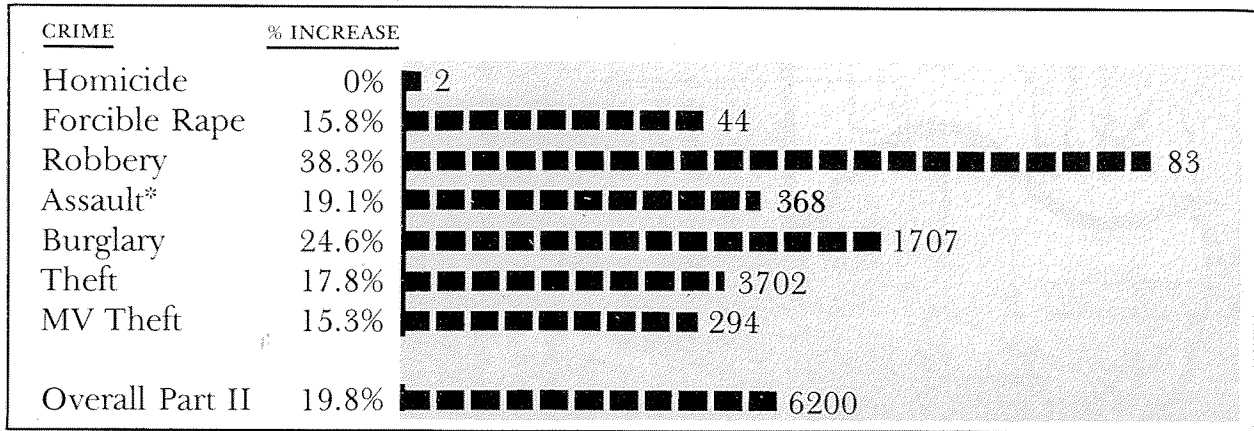
PART II/OTHERS

<u>CRIME</u>	<u>ADULT</u>	<u>JUV.</u>
Exposing	3	0
Forgery	11	5
Malicious Mischief	38	35
Molesting	5	1
Poss. Stolen Property	23	33
Others*	<u>1094</u>	<u>266</u>
TOTAL:	1174	340

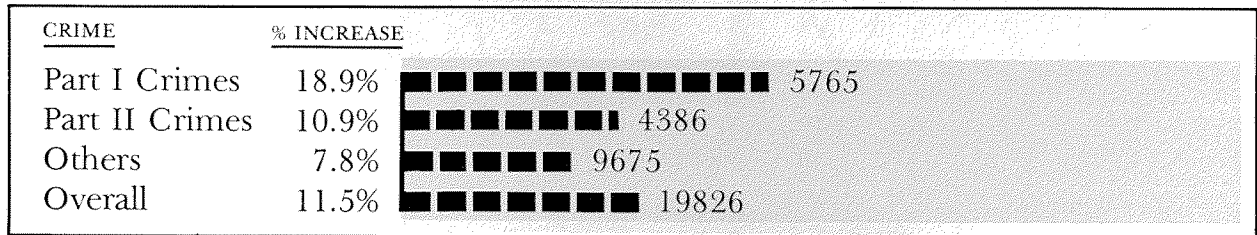
* Does not include traffic related arrests.

UCR Crime Statistics

UCR CRIME STATISTICS

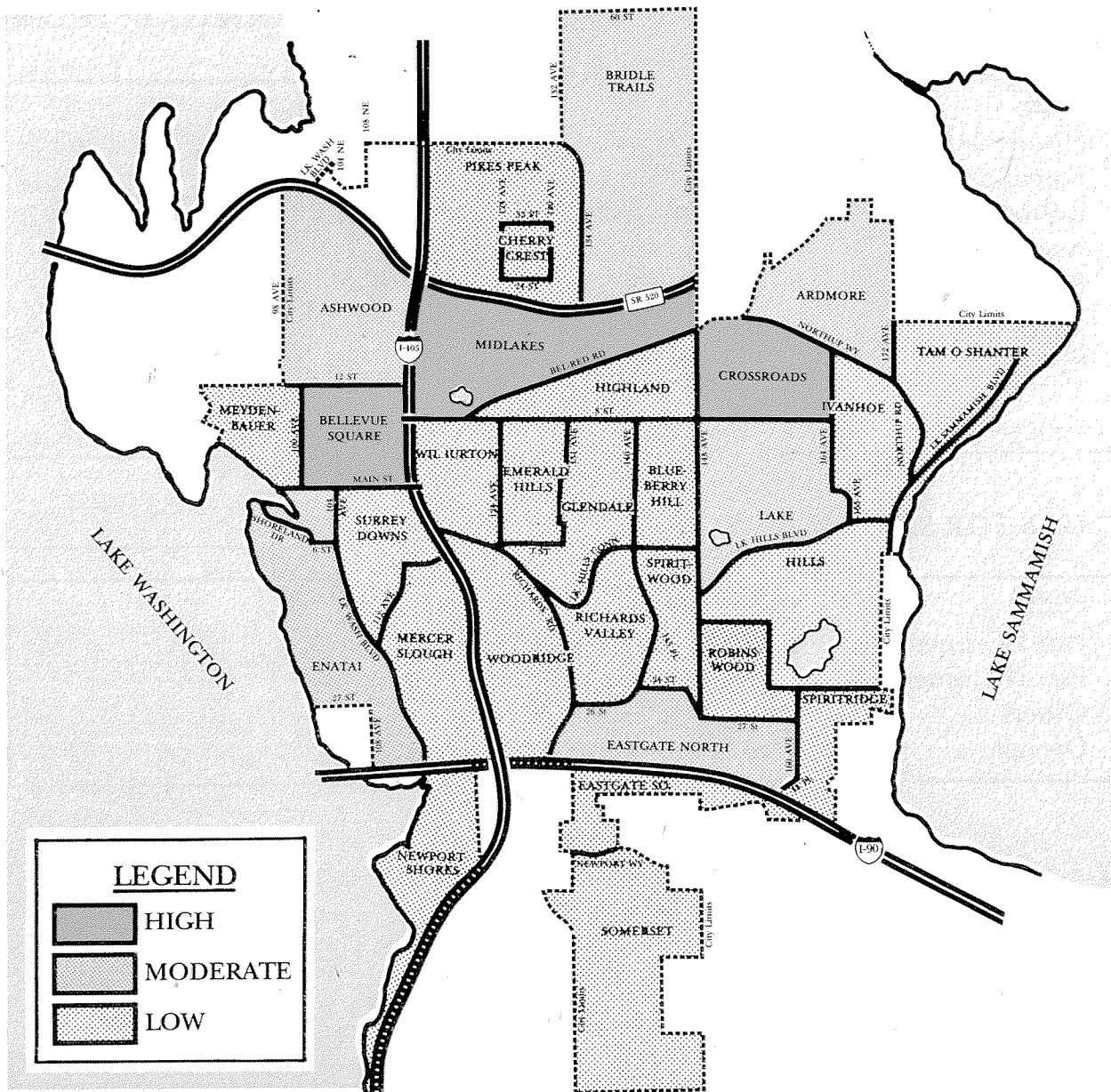


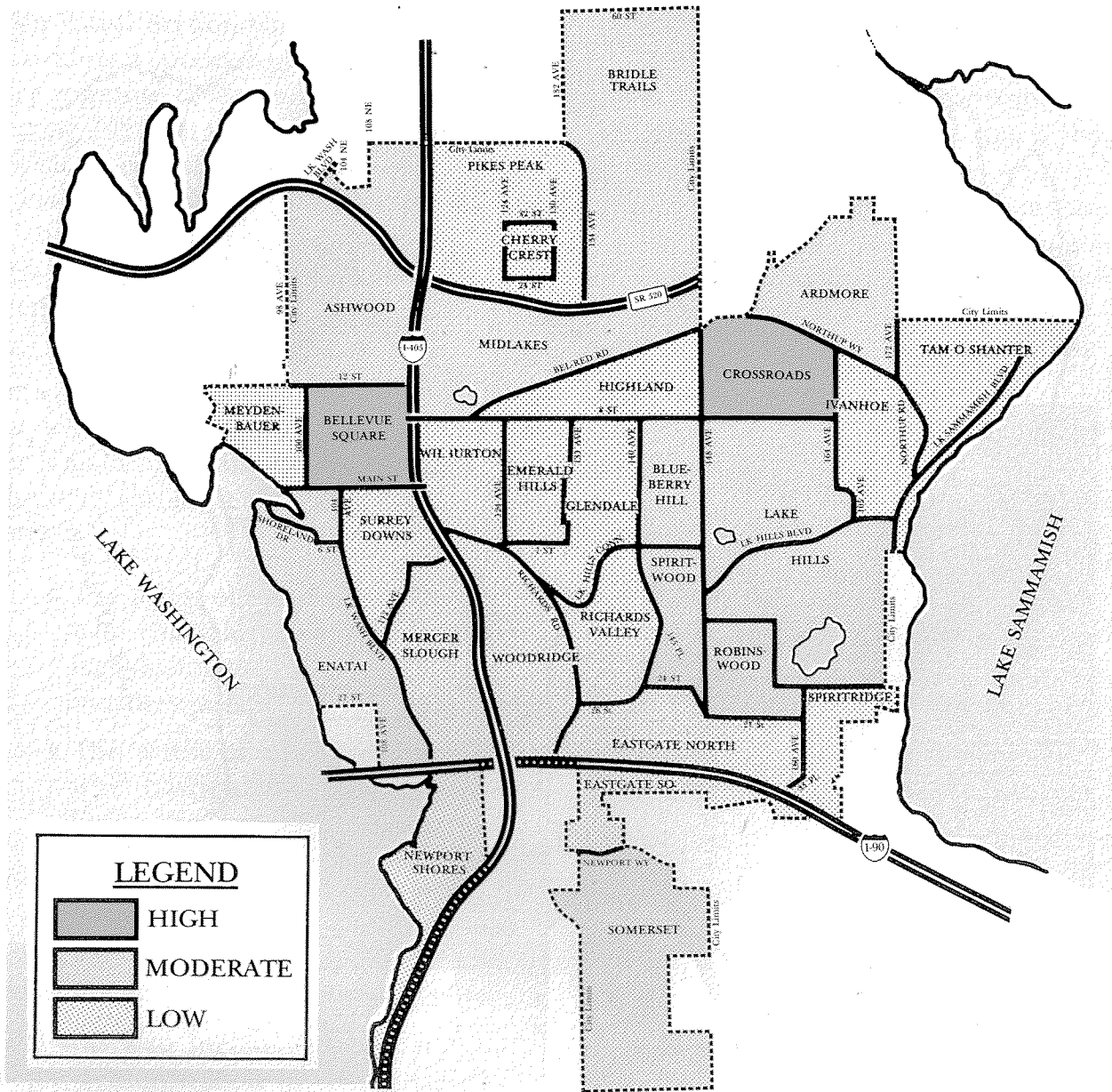
CALLS FOR SERVICE BY TYPE



*Includes simple, non-aggravated.

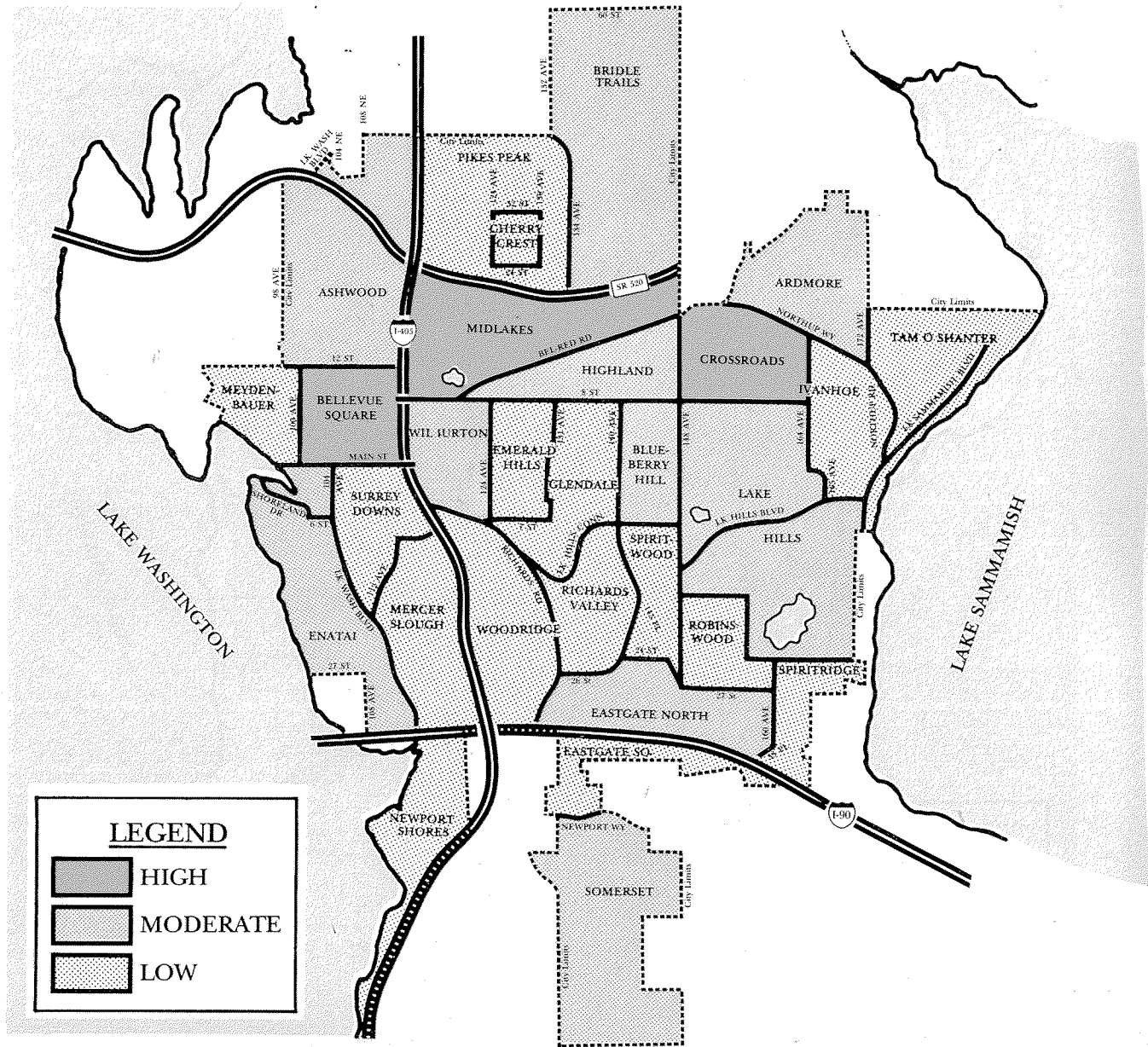
Geographical Data *part 1 crimes*





LEGEND

- HIGH
- MODERATE
- LOW



The Patrol Section was instrumental in providing a continuing high level of service response to the citizens of Bellevue during 1980. It was, however, a year in which the combined effects of continuing population growth, escalating crime and a continuing decline in relative manpower, greatly taxed the Department's response capabilities.

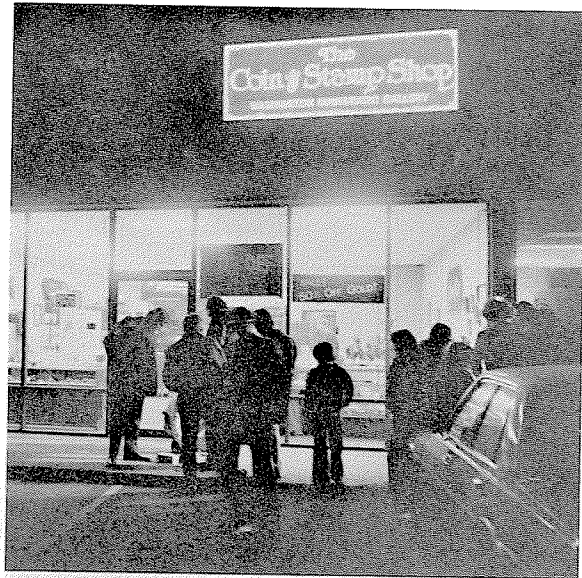
Several high hazard incidents were experienced within the City during 1980 for which the Patrol Section provided the initial containment and eventual resolution. The most noteworthy of these were:

- The arrest of two armed suspects who had taken two citizens hostage during the robbery of a local business; and,
- The arrest of an armed suspect who barricaded himself in his home after pointing a rifle at two officers responding to a domestic disturbance call.

Both incidents were contained and resolved without injury or exchange of gunfire.

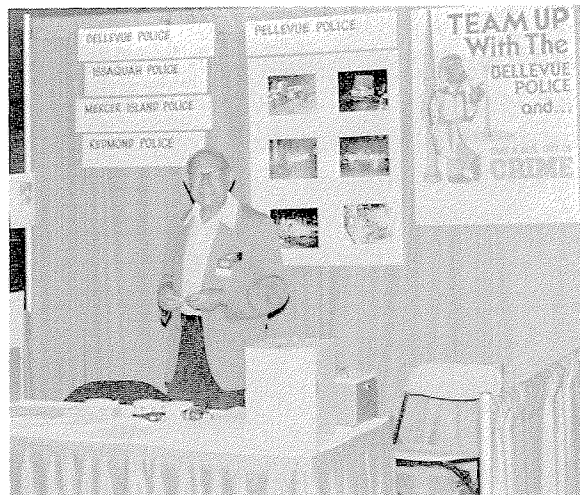
1980 was also highlighted by the first major demonstration of civil disobedi-

ence since the 1960's. Twenty-one people were arrested after chaining themselves to the gates of the newly completed Bellevue Mormon Temple. Again the high degree of professionalism demonstrated by Patrol personnel was instrumental in defusing a hostile situation without injury. Those arrested later expressed a great deal of praise for the manner in which the incident was resolved.



Crime Prevention

The Crime Prevention Unit is an important part of Bellevue's approach to contemporary policing. The Unit's responsibilities encompass residential units and local business, young children and senior citizens, "mom and pop" stores and national corporations. The program is directed toward improving citizen/police relations such that a positive impact on crime related problems may be achieved.



The Residential Crime Prevention Program provided 315 presentations consisting of neighborhood meetings, discussions and training seminars. Crime Prevention personnel, in conjunction with patrol officers, conducted 89 school presentations. Patrol officers provided additional assistance by visiting 12 preschool classes.

The Senior Volunteer Program has provided the Unit with invaluable assistance. This group of very active retired citizens was responsible for 115 residential security surveys and the associated marking of valuable property.

The Commercial Crime Prevention Program continued to provide assistance to the local business community. Thirty-two commercial crime prevention seminars were held during 1980 encompassing bank employee training, anti-shoplifting, restaurant security, service station security, apartment security and employee theft. Unit officers conducted 47 commercial security surveys consisting of in-depth analysis and identification of each business' security needs.



VARDA "stakeout" alarms were installed in 34 commercial establishments resulting in the apprehension of 6 suspects responsible for 24 burglaries. Surveillance cameras were also installed in 13 businesses and resulted in the clearance of 3 incidents of internal theft.

The Crime Prevention Unit continued to coordinate the Police Cadet program. The Cadets, co-sponsored by the Police Department, Bellevue Boys/Girls Club and the Boy Scouts of America, are a small group of enthusiastic young adults dedicated to providing service to the community and the department. During 1980 the Cadets provided nearly 1200 hours of public service on such projects as; school vandalism/burglary patrol traffic control at special events and staffing crime prevention and traffic safety displays.

The highlight of the year was the acquisition of "Detective McGruff", the mascot of the National Crime Prevention Program. "Detective McGruff" was utilized in school programs and other crime prevention programs where children were invited to team up with the Bellevue Police Department and "TAKE A BITE OUT OF CRIME".

Detectives

Although robbery seemed to be the crime of preference in 1980 (up 38%), all categories of Part I crimes experienced an increase.

There were several noteworthy cases in 1980 which included the stabbing death of a 24 year old female at a local hostelry. The victim was confronted by her husband in her room and succumbed to wounds he administered with a knife. The husband was arrested and later convicted of murder in the second degree.

A 27 year old male who coolly ate meals at restaurants, then showed his appreciation of the cuisine by robbing the establishment, earned the moniker "The Dine 'n Dash Robber".

A six year old female was the victim of kidnap/rape when she was abducted from K-Mart by a 49 year old male. Extensive detective work led to the conviction and incarceration of the suspect.

It was gratifying to note the Detective Unit was able to meet the increased case load without additional personnel; and, at the same time, increase their clearance rate in all categories.



Youth Services

The Youth Services Officer, assigned to the Crime Prevention Unit, is an integral part of the investigative arm of the department. His responsibilities include the review of all cases involving juvenile offenders for appropriate disposition. He is also assigned a continuing caseload for followup investigation.

The following reflects the number of cases investigated or reviewed by the Youth Services Officer during 1980:

<u>CASES</u>		
Cases Closed/Arrest	596	
Cases Closed/Summons	53	
Cases Closed/Other	138	
Cases Outstanding	1 (Runaway)	
TOTAL CASES ASSIGNED	788	
<u>ARRESTS</u>		
Total Number of Juveniles Arrested	946 (240 Felony)	
<u>REFERRALS</u>		
	<u>CASES</u>	<u>JUV.</u>
King County Juvenile Court	545	774
Bellevue Court Conference Committee	54	70
Parental Discipline	98	119
Dept. of Social And Health Services	35	21
Other	35	21
TOTAL	788	1043

Specialty Units

Police agencies must always be prepared to provide specialized response to varying service needs of the community. To that end the department has established and maintained the Special Investigations Unit, Hazardous Devices Unit and the K-9 Unit.

The Special Investigations Unit is assigned the responsibilities for investigation of vice, gambling and narcotics violations. They provide technical assistance to uniformed personnel as well as community organizations. In 1980 the Unit was responsible for the arrest of 192 suspected felon/misdemeanants and the confiscation of narcotics and dangerous drugs valued in excess of \$911,754. They also seized 7 automobiles, 8 scales, 3 light systems and 1 safe, all of which were being used to further drug/narcotics trafficking.

Summary of Narcotics/Drug Seizures & Typical Street Value:

TYPE	AMOUNT	STREET VALUE
MARIJUANA	27337.6 grams	\$144,964.40
HASHISH	1371.6 grams	13,716.00
COCAINE	1536.1 grams	741,957.50
AMPHETAMINE	2609 tabs	3,127.00
LSD (BLOTTER)	975 hits	4,500.00
LSD (POWDER)	3 grams	60.00
PSILOCYBIN	523 grams	1,343.00
QUAALUDE	9 tabs	63.00
CODEINE	31 tabs	93.00
MEPROBAMATE	14 hits	42.00
DALMINE	30 hits	90.00
VALIUM	13 tabs	62.00
NITROUS OXIDE	4 bottles	400.00
PEYOTE	25 buttons	275.00
DEMEROL	21 mls	555.00
TALWIN	62 tabs	124.00
DARVON	1 tab	10.00
MISC. TABLETS	153 tabs	373.00
TOTAL		911,754.00

SUMMARY OF CASE ACTIVITY:

DRUG COMPLAINTS	237
PRESCRIPTION VIOLATIONS	29
PROSTITUTION	6
GAMBLING	1
TOTAL	273
MISDEMEANOR ARRESTS	109
FELONY ARRESTS	83
TOTAL	192

K-9 Unit



Once considered an experiment, the K-9 Unit has proven to be an essential, integral part of contemporary policing. The Unit is comprised of two handler/dog teams who provide search and track capabilities for the department.

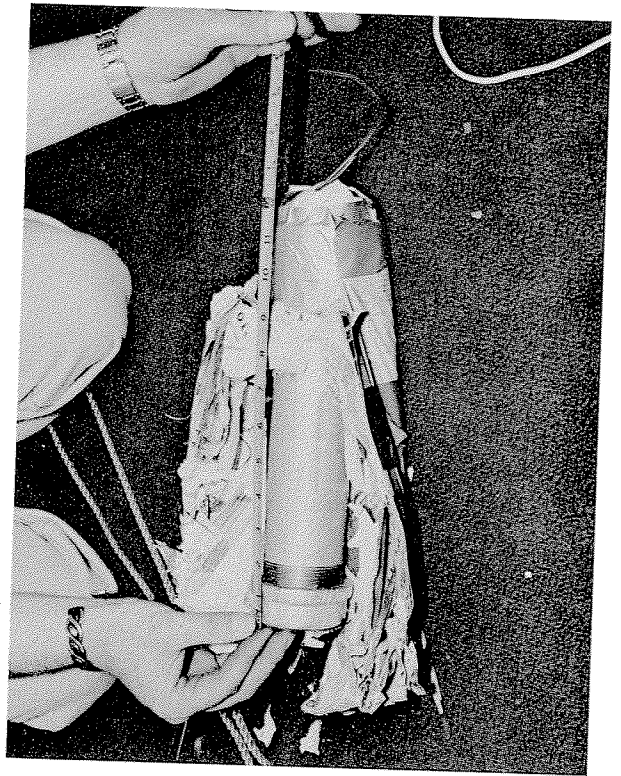
1980 was a banner year for the unit; the teams were involved in 1,417 incidents, apprehended 65 suspects and recovered property valued in excess of \$42,000. The 34% application/find success ratio of the unit is noteworthy (the regional average for other units is 24%).

The K-9 Unit's low operational costs make it a beneficial law enforcement tool which should continue to provide invaluable service to the Department and the citizens of Bellevue.

Hazardous Device Unit

The volunteers of the Hazardous Devices Unit are highly trained technicians responsible for the handling and disposal of explosives and dangerous chemicals. Explosive/chemical incidents increased approximately 18.5% in 1980; the primary causes for the increase being attributable to an increase in incidents of bombings. On the other hand, the number of bomb threats and reports of dangerous chemicals was down.

The substantial increase in explosive devices was attributable to vandalism or experimentation. One teenager was injured as a result of a small pipe bomb exploding during construction. The unit was also called upon to remove a large quantity of ammonium trioxide, an extremely unstable chemical explosive, from a private residence. The compound had been made by a teenage member of the household.



The Traffic Section is presently authorized 13 officers, two lieutenants and a captain. In 1980, the Traffic Section handled 86% (1,892) of all investigated accidents (2,196) and issued 84% (7,547) of all the citations written (8,986) by the police department. The City of Bellevue now covers 27 square miles with 384 streets and 875 lane miles. The population has risen to approximately 80,000 and the traffic volume has increased in relation to other growth. However, through continued directed manpower and judicious modifications of special programs such as T.E.A.M. (Traffic Enforcement for Accident Management) and the Accident Prevention Program, the Section was able to reduce accidents by 7% over 1979



while at the same time the traffic volume rose an estimated 6%. Neighboring communities, such as Redmond, Kirkland, and Renton report accident increases of over 10% for the same period.

In addition to their primary responsibilities of traffic enforcement and accident investigation, Traffic personnel responded to approximately 1,137 patrol calls and accounted for 22 felony and 105 misdemeanor arrests.

The Traffic Section has one full-time detective assigned to the investigation of hit and run accidents. In 1980 there were 520 hit and run accidents, representing 22% of the total accidents investigated. Fifty percent of those reported were cleared.

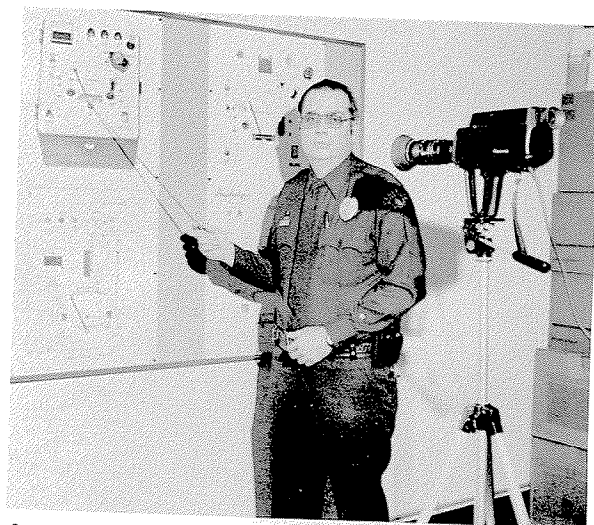
A major responsibility for the Traffic Section is the coordination of police services for such special events as the Seattle Times - Summer Run and the Bellevue Arts and Crafts Fair. There were 14 special events held in 1980 requiring additional staff deployment for crowd control, traffic control for pedestrian/runner safety and numerous other response needs associated with events attracting from 3,000 to 150,000 participants.

Planning/Personnel/Training

1980 was a very productive year for the Planning/Personnel/Training Unit. Each commissioned officer on the department received an average of 56.3 hours of training during the year. The training was derived from several different sources including the Washington State Criminal Justice Training Commission, WSP, and IACP. The unit continued to use departmental personnel for a majority of the training.

1980 witnessed the introduction of the "Capture Net" and the Monadnock PR-24 baton. The Capture Net, a non-lethal device, is designed to aid police officers in the capture and containment of violent mentally deranged, or drug affected persons. All patrol and traffic officers and supervisors were trained in the use of the "Capture Net".

The department changed the issue baton to the Monadnock PR-24. All line officers and supervisors were trained in the use of the baton in eight-hour sessions during the months of November & December. Instruction in the use of the PR-24 was provided by four department instructor-trainers. Both the "Capture Net" and the PR-24 are intended to diminish the need for the application of potentially deadly



force.

The unit is staffed by one Lieutenant and one officer who have additional responsibility for screening and hiring of personnel, policy formulation and administration of the Field Training Officer program.

Staff Support

Communications, Records, the Headquarters Unit and the Property/Evidence Clerk all function under the collective banner of Staff Support. The work done by the Section goes mostly unheralded as the personnel involved work away from the public eye, but their contribution to the overall effectiveness of the department is invaluable.

The Communications Unit is responsible for incoming emergency calls 24 hours a day. Dispatchers received 47,146 calls in 1980. The Unit dispatches police calls to Bellevue, Medina, Clyde Hill, Hunts Point, and Yarrow Point. Fire calls and medical emergencies are dispatched to the above cities and to Bothell, Redmond, Kirkland and outlying county agencies.

The Records and Headquarters Units consist of 15 full time clerks, 2 part time clerks, 3 clerks permanently assigned to Traffic, Patrol and Crime Prevention, 3 supervisors, 3 police officers and 1 Lieutenant. The entire Section is directed by a Captain.

Headquarters and Records handled the following in 1980:

1. 43,019 phone calls
2. Processed 16,016 cases
3. Initiated 4,564 cases
4. Issued 683 weapons permits
5. Fingerprinted 1,563 individuals

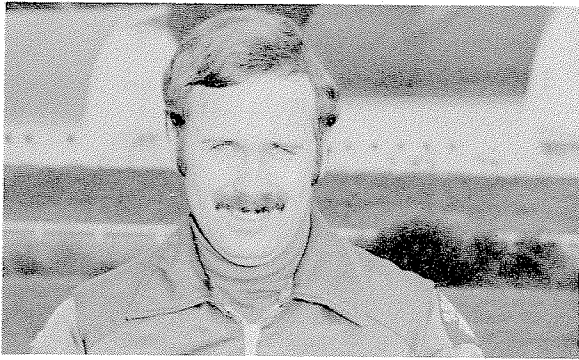
The final member of Staff Support is the Property/Evidence Clerk. His responsibilities include booking and storing evidence for future court use by officers and storing found property (e.g., bicycles). Unclaimed items are sold at auctions; the resultant revenue from these auctions was in excess of \$7,700 in 1980.



Employees Of The Year

The Police Department takes a great deal of pride in its employees; and, each year acknowledges three, who are voted by their peers as employees of the year. In 1980 the honors were received by William E. Cooper, police officer of the year; Teresa L. Primrose, dispatcher of the year; and Cindy Chambers, clerk of the year.

William E. "Bill" Cooper joined the Police Department in December 1973 and was assigned to the Traffic Section. He has subsequently served in both the Patrol Section and Detective Unit, and is currently assigned to Patrol as a K-9 Officer. Bill is a very involved member of the Police Department serving as secretary to the Police Guild and as a member of the police slowpitch softball team. He is likewise a qualified Emergency Medical Technician and a past member of the Tactical Arms Group.



Terese L. Primrose began work with the department in July 1973 as a clerk-typist in the Detective Unit. In May 1976 she transferred to the Communications Unit as a dispatcher. Among Terry's many accomplishments are; maintenance and updating of the Communications Unit's reference material, training dispatchers, and assisting in the development of the new dispatcher training program. Terry is a valued asset to both the Communications Unit and the department.

Cindy Chambers who came to the department in October 1976, is assigned to the Records Unit as a police clerk. During her tenure she has accepted many and varied responsibilities for which she has received the respect and admiration of her peers



GRAPHICS BY THE CITY OF BELLEVUE
COMMUNITY RELATIONS DEPARTMENT