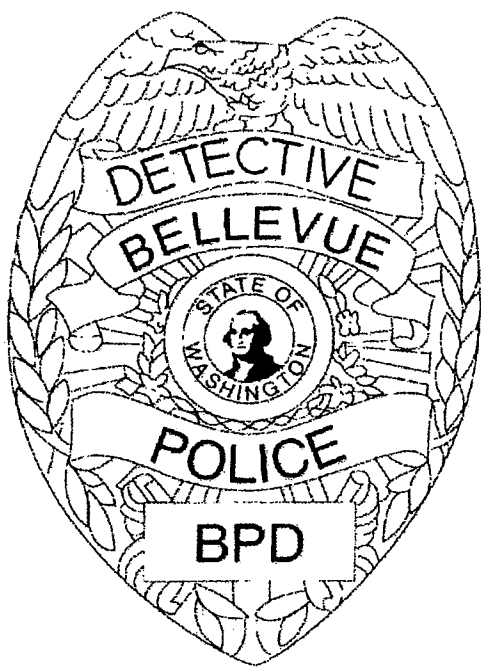


ANNUAL 1997 REPORT

Bellevue Police Department Investigations Section



**Chief of
Police**



**James
Montgomery**

TABLE OF CONTENTS

1997 ANNUAL REPORT DETECTIVE SECTION	1
FORENSIC SERVICES UNIT	2
EASTSIDE NARCOTICS TASK FORCE	
Summary of Activity For 1997	5
Overview of the Task Force	6
Overview of the Narcotics Problem	6
Primary Focus of the Task Force	6
Overall Task Force Activity for 1997	7
SPECIFIC INVESTIGATIONS OF INTEREST	8
Marijuana Grows	8
Cocaine Investigations	10
Cocaine HCL	11
Crack Cocaine	12
Other Significant Investigations	12
Eastside Narcotics Task Force Activity by Year	15
1997 Statistics	32
Specific Seizures	33
Performance Measures	34
1997 Summary of Training	43
PERSONS CRIMES/JUVENILE ASSAULT UNITS	45
Persons Crimes Unit Mission	45
Organization of Persons Crimes Unit	45
Significant Organizational Changes in the Persons Unit 1997	45
Significant Investigations 1997 Murders	46
Other Interesting Investigations	47
Persons Unit Statistics by Detective 1997	48
Training	49
JUVENILE ASSAULT UNIT	50
Mission	50
Organization of Juvenile Assault Unit	50
Significant Organizational Changes in the Juvenile Assault Unit 1997	50
Significant Investigations 1997	50
Juvenile Assault Unit Statistics by Detective 1997	51
Total Juvenile Assault Unit Statistics 1997	51
Training	52
White Collar Crime Unit	54
1997 Investigations Reflect the Diverse Nature of White Collar Crimes	55
White Collar Crime Unit Statistics	56

Communication and Education Achievements Demonstrate Community-Oriented Policing	58
1997 Crime Analysis Unit	60
Mission	60
Unit Structure and Responsibilities Continue to Grow and Evolve	60
Crime Analysis Unit Accomplishments Produce Department-Wide Benefits	63
The Volume of Intelligence Generated by Crime Analysis is Far-Reaching	64
Training Presentations Were Made to the Following Groups:	64
Specialties - Russian/Eurasian Organized Crime:	65
Russian/Eurasian Organized Crime; 1997 Crime Analysis Unit Accomplishments:	65
Looking Toward the Future...Goals For the Crime Analysis Unit	65

PROPERTY CRIMES UNIT	68
Mission	68
Organiation of the Property Crimes Unit	68
Department-Wide Responsibilities	68
New Case Management System Results in More Effective Investigations	68
1997 Property Crimes Unit Highlights	69
Training Attended	70
Property Crimes Unit Statistics 1997	70

Deputy Chief of Operations
Larry Lorack

Traffic Section

Patrol Section

Detective Section

Persons Crimes
Unit

Narcotics
Unit

Property Crimes
Unit

White Collar
Crimes Unit

Forensic
Sciences

Crime Analysis
Unit

Bellevue Police Department Investigations Section

Detective Major
Dave Gans

Captain
Bob Baker
Eastside Narcotics
Task Force

Lieutenant
Bill Quinn
Persons Crimes

Lieutenant
Ed Mott

White
Collar
Crime

Crime
Analysis

Lieutenant
Jim Gasperetti
Property Crimes

Administrative Clerk
Sheila Evans

Forensic Specialist
Carl Nicoll

Bellevue Police
1997 Annual Report
Detective Section

During 1997 the Detective Section of the Police Department underwent several changes in the sectional organization. Three unit Supervisors (Person, Property, and White Collar Crime units) were rotated within the Section to give balanced leadership and experience. This has been a positive step, both for the Supervisors and Detective's in those units. The Narcotics Captain was also rotated as part of the normal rotation of Commanders.

The Detective section also joined the rest of the department in a four-ten work schedule in an attempt to reduce overtime cost. During the last quarter of 1997 overtime costs as they relate to shift extensions were reduced by more than 70%, with an overall 40% reduction in total overtime cost. During 1997 the Detective Supervisors put in place an effective case management system which allows the Lieutenants to meet at least once a month with each Detective to discuss case load and investigative direction. While this has reduced overall excessive case load for individual Detectives, it has increased the number of arrest and the number of cases solved via reducing a high case load and increasing the quality of the investigation.

Community needs and demands for service are also very important to the Section. During 1997 several highly publicize homicide cases created a high level of fear and lack of safety in several neighborhoods. Numerous neighborhood meetings were held and communities were reassured of their safety. Adding to our workload were several new laws' regulating the release of sexual offenders' back into the community. This has increased a demand to disseminate information and hold public meetings to assure and inform neighborhoods.

The demand for customer service with quality investigations continues to need adjustments. The Section moves forward with the ability to make these adjustments, while continuing to put out a better product of investigation, customer service and case closure. 1998 will be an even more challenging year as we move into advance records management system, advance A.F.I.S. and use of technology to resolve more investigations.

FORENSIC SERVICES UNIT

The Forensic Services Unit is charged with the responsibility of identifying criminal perpetrators through the analysis and identification of trace evidence left by such individuals at crime scenes. Although substantially involving the identification of latent prints, the unit's peripherals extend to include major crime scene examinations for trace evidence of any kind; in-house laboratory analysis of evidence items to locate trace material such as fingerprints, footwear impressions, physiological fluids and toolmarks; surveillance video enhancement and other digital imaging contingencies.

In addition to considerable local responsibilities, during 1997 the Unit extended assistance to the FBI, the Washington State Patrol Crime Laboratory, other local law enforcement agencies and the Boeing Aerospace Company, relevant to various criminal matters they were investigating.

In October the Unit was awarded approximately \$154,000 in no match grants for the purchase of various equipment pieces. This included Live Scan, an inkless digitized fingerprinting system for the Police Station booking room, upgrading the Department's current AFIS capacity to AFIS 21 technology, a new high resolution digital camera and a Forensic Light Source.

The daily diligence of officers and evidence technicians in developing latent prints at crime scenes during 1997, saw 83 separate case identifications effected by years end. This figure, however, is minuscule by comparison to the actual case numbers cleared by these identifications. As an example, in one incident a single identification from a car prowler resulted in multiple arrests and to the clearance of more than 100 additional auto related offences throughout King County.

The real time identification advantage of Bellevue's Automated Fingerprint Identification System, (AFIS) was demonstrated numerous times throughout the year, facilitating criminal identification and arrest, often within hours of an offence being committed. This benefit was clearly shown in an incident of residential burglary where, among other items, seven loaded handguns were stolen. A fingerprint recovered from the scene was identified the same day, culminating in the expeditious arrest of several suspects and recovery of the loaded weapons. The guns had been hidden in various backyard residential locations where they could easily have been found by children with tragic consequences.

In August, the Unit's image enhancement capability was utilized in extending assistance to the FBI in a bomb manufacturing case. Following the examination of over 60 duct tape pieces a partial latent fingerprint was developed on the sticky side of one of the pieces. Utilizing digital imaging technology, the value of the duct tape was reduced, effectively enhancing the print. The process culminated in an identification being effected and the filing of felony charges against the individual identified, a first for this offence type in Bellevue. Of further interest was the fact that the device had been submerged in water for some time prior to recovery.

1997 Investigations Section Annual Report

In November assistance was provided to the Boeing Aircraft Company, relating to an ongoing internal investigation at their Everett plant involving the theft of computer parts, a loss amounting to half a million dollars. Digital enhancement of a surveillance tape provided by company investigators culminated in the photographic reproduction of a suspect of sufficient clarity to effect an identification. Confronted with this evidence, the suspect admitted the offences.

The grants awarded this Department in August provide equipment pieces and technology that firmly position the Bellevue Police Department at the forefront in the field of forensic identification, providing the platform that will ensure continued successes in this specialized arena into the 21st century

Bellevue Police Department
Investigations Section

Eastside Narcotics Task Force
Detective Captain Bob Baker

Special Investigations
(Drugs and Vice)
Lieutenant Bill Bryant

Detective John Manning
Detective Kurt Rasco
Detective Mark Jordan
Detective Chris McOmber
Senior Police Specialist
Jean Mickschl-Johnson

Representative
Detectives from:
Mercer Island PD
Kirkland PD
Redmond PD
Issaquah PD

EASTSIDE NARCOTICS TASK FORCE
SUMMARY OF ACTIVITY FOR 1997

The Eastside Narcotics Task Force is comprised of law enforcement officials from five communities located east of Seattle. The Task Force also includes a King County Deputy Prosecutor, a secretary and a Washington National Guard Intelligence Officer.

The Task Force has the responsibility to investigate narcotic trafficking within its jurisdictional boundaries and/or within King County when that activity impacts the Task Force cities. Task Force member cities include: Bellevue, Redmond, Kirkland, Mercer Island, and Issaquah.

The primary focus of the Task Force in 1997 was to detect and arrest mid and upper-level narcotic dealers on the Eastside. Also, to identify and eradicate Marijuana Growing operations on the Eastside and to impact these organizations through aggressive property forfeiture investigations where possible.

The Task Force was very successful in these efforts conducting 39 Marijuana grow investigations, yielding in the takedown of 26 operations, which resulted in the seizing of 2901 plants and 22,251 grams of processed *marijuana*. These seizures had a street value of \$4,461,778. In addition, the Task Force seized: 2,766 grams of *cocaine* valued at \$276,600.00; 1037 grams of *methamphetamine* valued at \$103,720.00 and 385 grams of *heroin* valued at \$57,705.00. Assets seized by the Task Force amounted to \$580,216.84; overall drug and asset seizures totaled \$5,480,674.84, which was nearly twice the amount of 1996.

The Task Force has been a very successful endeavor. Future success in 1998 is expected as it begins its seventeenth year of existence.

EASTSIDE NARCOTICS TASK FORCE SUMMARY OF ACTIVITY FOR 1997

OVERVIEW OF THE TASK FORCE

The Eastside Narcotics Task Force was formed in 1981 and is comprised of Law Enforcement officers from five cities located East of Seattle. These cities include: Bellevue, Redmond, Kirkland, Mercer Island, and Issaquah.

The Task Force consists of a Commander, a Lieutenant, eight detectives, a King County Deputy Prosecutor, a Washington Army National Guard Intelligence Officer, and a Secretary.

The unit has the responsibility to investigate narcotic trafficking within its jurisdictional boundaries and/or within King County when narcotic trafficking impacts the Task Force cities.

OVERVIEW OF THE NARCOTIC PROBLEM

Unlike large metropolitan cities, where narcotics are openly distributed on street corners, Eastside narcotic transactions are not typically one-time street contacts. Eastside narcotic transactions usually occur in private homes, apartment buildings, hotels/motels, or in common parking lots at commercial complexes.

Eastside transactions are much more mobile and dealers typically use cellular phones and pagers to conduct business. Because of this, narcotic transactions are less open and more difficult to detect. By their very nature these investigations require more than one contact and are extremely labor intensive to reach mid and upper-level dealers.

PRIMARY FOCUS OF THE TASK FORCE

In 1997, the Task Force continued strong focus upon the identification and eradication of Marijuana Grow operations.

Improvements in indoor Marijuana cultivation has prompted faster plant growth. Typical Eastside growers use sophisticated filtration systems to mask odors and often use power diversion techniques to mask electrical consumption. These investigations are extremely labor and resource intensive.

Because of its location along the I-5/I-405 Corridors and Interstate 90, the Eastside is a likely target for large-scale Cocaine distribution organizations. Much of the Cocaine destined for the Eastside is transported along I-5 and frequently, Cocaine coming from Mexico enters through Eastern Washington and is transported to suppliers along I-90.

Although cocaine is still a popular drug on the Eastside, it is being strongly challenged by the increasing popularity of methamphetamine. This is due to the fact that the newer form of methamphetamine has a "high" that lasts much longer than cocaine and the prices are similar.

Because narcotics trafficking is enormously profitable, the Task Force continued to focus on aggressive drug-related property forfeiture investigations. The objectives of these investigations are three-fold:

1. Make drug dealing on the Eastside less profitable.
2. Reduce the number of dealers in the communities of the Eastside.
3. To enhance law enforcement's ability to address the effect of drug dealing on the communities and their law enforcement agencies by transferring the proceeds to drug investigations and other law enforcement efforts.

OVERALL TASK FORCE ACTIVITY FOR 1997

The task force is charged with the investigation of vice and narcotics complaints. Narcotics investigations were predominant and are the primary focus of the task force. Total arrests were down 4% from last year. The task force served 15% less search warrants than in 1996. This can be attributed to the fact that the task force was short handed an average of two of the eight detectives during the latter half of the year.

Marijuana and cocaine continued to be the narcotics of choice on the Eastside. Methamphetamine and heroin are rapidly gaining in popularity.

Specific seizures include the amount in grams of drugs seized and the street value of those drugs.

Although cash seizures were down, *the task force enjoyed a record year regarding the seizure of 101 guns.* Vehicles seizures were also up over the previous year. Narcotics seizures increased dramatically, *rising 114% over the previous year.* **Total drug and asset seizures were up an impressive 86% over 1996.**

SPECIFIC INVESTIGATIONS OF INTEREST

Marijuana Grows

In 1997, the Task Force conducted 39 Marijuana Grow investigations resulting in the shut down of 26 operations. These investigations yielded the seizure of 1936 mature marijuana plants and 965 marijuana starter plants. Other marijuana investigations resulted in the seizure of 22,251.4 grams of processed marijuana. Street value of these seizures, including the seized grow equipment, totaled more than four and one half million dollars. Significant grow investigations include:

In January, ENTF detectives served a search warrant upon a residence in Redmond. A seventy plant marijuana growing operation was located in a secret grow room in a dug out crawlspace accessed by a hidden door. Over 16 pounds of processed marijuana was located throughout the residence. Two suspects were arrested. Over \$400.00 in cash was seized from them and forfeiture proceedings were initiated upon the real property.

In February, task force members served a search warrant on a house in Redmond and discovered a marijuana growing operation which featured 51 marijuana plants set up in a concealed room. Five ounces of processed marijuana was also seized. Six guns were seized; one of which was an "SKS" .762 *assault rifle*. Cash totaling \$718.00 was also seized. Two suspects were arrested. This case was developed from surveillance of a local business that caters to marijuana growers. It is one of many that resulted from aggressive proactive investigation by task force detectives.

In March, task force detectives served a search warrant upon a house and discovered a large scale marijuana growing operation in the basement. Six 1000W metal halide lamps were being used to grow 140 marijuana plants. Two suspects were arrested and additional seizures included: a 1990 Chev blazer, a .45 caliber pistol and \$1,731.00 in cash.

Also in March, detectives conducted a "knock and talk" at a residence in Kirkland. The suspect consented, thinking that the investigators would not find it due to the grow being hidden in secret rooms. He was wrong, resulting in his arrest and the seizure of 139 marijuana plants. Approximately ten pounds of recently harvested marijuana was being processed at the time.

In April, ENTF detectives conducted extensive surveillance upon a suspect which identified a marijuana growing operation in south Snohomish county. This operation had been supplying marijuana to the Eastside. The suspect was arrested with nearly two pounds of processed marijuana during a buy/bust operation. A follow up search warrant netted the grow operation. This house was used exclusively for the purpose

1997 Investigations Section Annual Report

of growing marijuana and resulted in the seizure of 368 mature plants. The suspect's Volvo and \$1,147.00 in cash were also seized. This case was adopted by the DEA and presented to the office of the U.S. Attorney for the filing of federal charges.

Also in April, task force detectives served a search warrant upon a residence which manifested a sophisticated large scale marijuana operation. Ten 1000W lamps were being used to grow 201 marijuana plants. Nearly a pound of processed marijuana was also seized. The suspect was treated to a pair of handcuffs upon returning home during the search.

Also in April, ENTF detectives were called in to assist Redmond patrol officers that came across the odor of marijuana after responding to an apartment in Redmond. A subsequent search located 260 marijuana plants. Cash totaling \$873.00 was also seized. Three suspects were arrested.

In May, detectives served a search warrant upon a residence in Woodinville. A suspect was arrested upon the discovery of a 107 plant marijuana growing operation. Cash totaling \$900.00 was seized.

Also in May, a search warrant served upon a residence in Seattle yielded a 156 plant marijuana growing operation. Two suspects were arrested and the following items were seized: a 1984 GMC Jimmy; \$380.00 in cash, two handguns and eleven rifles which included *three AK47s*.

Also in May, a search warrant served upon a residence in Kent resulted in the seizure of 237 marijuana plants from a hidden grow room. Nearly one pound of processed marijuana was also seized. Three suspects were arrested. A follow up search warrant resulted in the seizure of a large amount of equipment used for growing marijuana.

Also in May, the task force served a search warrant upon a residence in Kirkland. A 69 plant marijuana growing operation was located. One suspect was arrested. A 1995 Toyota PU and \$6976.00 in cash was seized from him. A second search warrant was served (right after the first warrant) less than a block away and another grow operation was located. This one yielded 156 marijuana plants and 2 ½ pounds of processed marijuana. One suspect arrested.

In June, ENTF detectives assisted the Issaquah police department with the eradication of several patches of marijuana plants growing in the area of Lake Sammamish State Park. They had been spotted by a National Guard helicopter pilot who was flying the IPD D.A.R.E. officer between presentations.

Also in June, a search warrant was served upon a residence in Bellevue. A fifteen plant marijuana growing operation was seized and three suspects were arrested. A handgun, shotgun and a *SKS assault rifle* were seized along with nearly \$600.00 in cash.

In July, ENTF detectives served a search warrant upon a residence in Seattle. A 106 plant marijuana grow operation was located inside. Fortunately, the two suspects were taken into custody before they had a chance to get to the bedroom where there were *forty-five (45) firearms*. This involved a mix of handguns, rifles (many of which were loaded) and thousands of rounds of ammunition, including *armor piercing rounds*.

In October, probable cause to obtain a warrant was gathered during a "knock and talk" investigation at a residence in Kirkland. The warrant was served and a 57 plant marijuana growing operation was located. A sophisticated filtration system was being used to mask the odor produced by the growing marijuana. Two suspects were arrested. Cash totaling \$5,925.00 was seized from them. A financial investigation upon the suspects allowed for the seizure of a 1995 Ford bronco and a 1992 Toyota 4X4 PU.

Also in October, ENTF detectives followed up on information provided by detectives from the WESTNET task force. A warrant was obtained and served upon the residence. A 102 plant marijuana growing operation was located inside the residence in Bellevue. One suspect was arrested. A 1983 "dually" PU was seized from him along with \$826.00 in cash.

Cocaine Investigations

Cocaine hydrochloride (HCL) is the water soluble form of cocaine that is most commonly ingested by snorting. It can also be injected. It is the most common form of cocaine and is bought as a white crystalline powder. In 1997, Cocaine investigations continued to be a major focus of the Task Force. The Task Force continued to target mid and upper level dealers as well as street dealers distributing "Crack" Cocaine. In 1997, The Task Force seized 2,679.6 grams of powder and "Crack" Cocaine. Significant investigations include:

Cocaine HCL

In February, ENTF detectives served a search warrant upon a residence in Bellevue. One suspect was arrested after approximately two ounces of cocaine was located in his bedroom. Unfortunately for his parents, they were present when the warrant was served.

In March, task force detectives conducted a joint investigation with the DEA regarding a trafficker of cocaine and heroin. An extensive surveillance took place between the Eastside and Wapato. The Washington National Guard C-26 "spy plane" assisted with the surveillance. Unfortunately, the main suspects became suspicious of surveillance in Wapato and would not conduct any transactions. The suspect made contact with a lower level dealer and made a purchase. He was arrested upon his return to the Eastside and was in possession of one ounce of cocaine.

Also in March, a search warrant was served upon an apartment located in Redmond. Three suspects were arrested upon the discovery of six ounces of cocaine. A loaded Beretta .22 handgun was seized in addition to \$1,839.00 in cash.

In May, an undercover ENTF detective negotiated to purchase five ounces of cocaine from a suspect for the wholesale price of \$5,000.00. The suspect was arrested upon delivery of the cocaine. His 1988 Hyundai and \$187.00 in cash were also seized.

In July, an undercover ENTF detective negotiated for the purchase of 1/4 kilo of cocaine and 4 pounds of marijuana. The suspects were arrested upon the delivery of a *full kilo of cocaine* and the marijuana. (Street value of \$136,000.00) Two vehicles and \$458.52 in cash were seized from the suspects.

Also in July, an undercover ENTF detective negotiated to purchase 1/2 kilo of cocaine from a suspect. He was arrested upon delivery of the cocaine. His 1992 Mitsubishi was seized from him. A follow up search warrant at his apartment resulted in the arrest of his girlfriend and the seizure of a handgun. Both suspects were booked on a "rush file" basis.

In October, the task force conducted another joint investigation with the DEA. A suspect was arrested upon delivery of 1/4 kilo of cocaine. A follow up search warrant yielded about 1/3 pound of marijuana. Two vehicles and nearly \$900.00 in cash was also seized.

"Crack Cocaine"

Cocaine base is commonly referred to as "crack" or "rock" cocaine on the streets. It is the smokable form of cocaine. It is the most addictive and dangerous form of cocaine. The Task Force seized 86.4 grams of "crack" cocaine. Significant cases include:

In January, task force detectives obtained a search warrant for a house in north Renton after a long term investigation regarding the sales of crack cocaine from within the residence. Due to a concern that an automatic weapon being present, the MIPD Special Operations Team served the warrant. Three suspects were arrested. Eight grams of cocaine, two handguns and a rifle were seized. One of the guns was stolen. The office of the U.S. Attorney is assisting with forfeiture proceedings against the real property.

In February, an ENTF detective located and arrested a suspect at a Redmond apartment. A consent search of the residence yielded five grams of crack cocaine and \$719.00 in cash.

In November, a search warrant was served upon an apartment in Bellevue. Numerous neighbors had complained about the constant foot traffic from addicts. Based upon the primary suspect's penchant to run, K-9 handlers covered the rear exit. Upon service of the warrant, the suspect ran out the back and ignored the commands of the K-9 handlers. The dog was released, but the suspect fell and broke his leg just prior to the dog taking him. Approximately thirty rocks of crack cocaine and \$455.00 in cash were seized from him.

Other Significant Investigations

In February, task force detectives were called in to assist BPD patrol officers who had come across narcotics and weapons during an arrest situation at a residence in Bellevue. A search warrant was obtained and served upon the residence. Only small amounts of cocaine and heroin were located. The suspect had numerous weapons and literature on how to convert them to become fully automatic. A check of the weapons revealed that two of them *had been converted to fully automatic assault rifles*. One of them was an AR-15 and the other one was a Sten submachine gun.

Also in February, detectives served a search warrant upon a residence in Seattle. Three suspects were taken into custody. During the search, the suspects source of supply arrived and two more suspects were taken into custody. They were in possession of *two ounces of cocaine* and \$8,622.00 in cash. Additional seizures include: several grams of heroin, two shotguns and three vehicles.

1997 Investigations Section Annual Report

In June, three heroin suspects were taken into custody. A follow up search warrant upon their house resulted in the seizure of \$7,493.00 in cash, several items of suspected stolen property and a van.

Also in June, an informant set up for his source to deliver heroin to a target location. Two suspects were taken into custody after they delivered *2 ½ ounces of black tar heroin*. Their vehicle was seized.

In July, an undercover ENTF detective negotiated for the purchase of *one pound of marijuana*. Two suspects were arrested upon delivery of the marijuana. Their vehicle and \$889.00 in cash were seized from them. The next day, the suspects surrendered *½ pound of additional processed marijuana and some grow equipment*.

In August, ENTF detectives conducted a joint investigation with the Duvall police department regarding numerous suspects involved in the sales of methamphetamine and cocaine. An informant was used to make controlled buys from several different suspects. The investigation climaxed with the service of two search warrants upon the houses of the main meth and cocaine dealers. *An ounce of meth* and small amounts of cocaine and marijuana were seized during the service of the warrants. Several customers were arrested during the searches. To date, *eighteen suspects have been arrested* with probable cause to arrest two additional suspects. Two of the suspects arrested involved Duvall City Councilmen; one of which was subsequently convicted on felony VUCSA charges. Additional seizures include: *two police scanners, four rifles and two pistols*, a van and **\$12,096.00** in cash.

Also in August, a search warrant was served in Redmond. Three suspects were arrested upon the seizure of nearly *two ounces of methamphetamine*.

Also in August, a confidential informant was used to set up a purchase of *two ounces of black tar heroin*. The suspect was kept under surveillance after the purchase in order to identify the main source of supply. Assistance was provided by the WNG C-26 and King County's "Guardian One". The suspect was subsequently stopped and arrested. A search warrant was obtained for his vehicle and *nine ounces of heroin* was seized along with the vehicle and \$1,315.00 in cash.

In November, an undercover ENTF detective negotiated for the purchase of two pounds of methamphetamine. The detective had previously purchased an ounce of meth as a sample from this suspect. The suspect called back and told the u/c that part of the meth had already been sold, but he still had *1 ½ pounds* left over. The deal was set up in Redmond and two suspects were arrested upon delivery of the *1 ½ pounds of methamphetamine*.

Also in November, an undercover ENTF detective and an informant met with a meth dealer in Redmond in order to negotiate a deal. The overly anxious dealer brought the *1/4 kilo of methamphetamine* to the restaurant and was subsequently arrested and his vehicle was seized.

In December, agents from the DEA lab team assisted ENTF detectives with the service of a search warrant upon a suspected methamphetamine lab in Fall City. The warrant was served and the lab was taken down along with a twenty-seven plant marijuana growing operation. Two suspects were arrested and booked into jail.

Eastside Narcotics Task Force Activity by Year

	1993	1994	1995	1996	1997
Cases closed/arrest/summons:	188	145	176	214	182
Cases closed other:	48	47	61	57	28
Inactive:	29	28	5	2	25
Unfounded:	5	0	7	17	5
Re-assigned	22	6	5	143	0
Felony Adult Arrests:	178	188	198	164	159
Felony Juvenile Arrests:	5	13	7	7	7
Misdemeanor Adult Arrests:	13	15	13	9	9
Misdemeanor Juvenile Arrests:	1	2	6	1	1
Charged W/O Arrest/Felony:	10	4	4	5	5
Charged W/O Arrest/Misd.	0	2	4	5	2
Total Number of Arrests:	207	243	232	191	183
SPECIFIC CLASSIFICATION OF CASES ASSIGNED FOR INVESTIGATION					
Vice Investigations:					
Gambling:	3	2	0	1	0
Prostitution:	2	5	0	3	0
Pornography:	1	0	0	0	0
Other:	0	0	0	3	0
Narcotics Investigations:					
Possession:	35	47	229	76	36
Delivery/Sale:	188	133	214	229	220
Prescription Forgery:	0	5	2	0	3
Marijuana Grows:	32	29	44	23	39
Labs:	0	1	3	5	1
Other:	5	9	5	6	1
SPECIFIC ENFORCEMENT ACTIVITY					
Search Warrant:	72	91	64	79	67
Search Warrant Assists:	159	211	211	213	188
Knock and Talks:	53	90	55	64	58
Undercover Buys:	130	69	69	65	43
Controlled Buys:	116	100	140	193	154
Reverse Investigations:	5	6	4	5	5
CI's Cultivated:	58	70	87	120	68
Tip Sheets:					107

EASTSIDE NARCOTICS TASK FORCE

QUARTERLY SUMMARY OF ACTIVITY

JAN/FEB/MARCH, 1997

83 Cases assigned Current Quarter

CASE DISPOSITION

Number of Cases:

51 Closed/Arrest
25 Closed/Summons-Filing
05 Closed/Other
04 Inactive
03 Unfounded
33 Re-assigned
104 Assigned
42 Tip Sheets

PERSONS ARRESTED/CHARGED

Number of:

56 Felony Adult Arrests
3 Felony Juvenile Arrests
2 Misdemeanor Adult Arrests
1 Misdemeanor Juvenile Arrests
1 Charged w/o Arrest (Felony)
0 Charged w/o Arrest (Misd.)
4 Warrant Arrests
12 FIR's

SPECIFIC CLASSIFICATIONS OF CASES ASSIGNED FOR INVESTIGATION

Number of:

VICE INVESTIGATIONS:

0 Gambling
3 Prostitution
0 Pornography
1 Other

NARCOTIC INVESTIGATIONS:

18 Possession
66 Delivery/Sale
17 Reliability Buys
0 Prescription/Forgery
12 Marihuana Grow Operations
0 Clandestine Labs
0 (Other)

OTHER STATISTICAL INFORMATION

SPECIFIC SEIZURES:

Type/Amount/Value of Narcotics seized for current month:

<u>TYPE:</u>	<u>AMOUNT:</u>	<u>VALUE:</u>
Cocaine: Rock	<u>50.6</u> grams	<u>\$ 5,060.00</u>
Powder	<u>414.3</u> grams	<u>\$41,430.00</u>
Marihuana (Processed)	<u>14110.5</u> grams	<u>282,210.00</u>
Marihuana (Plants)	<u>307</u>	<u>614,000.00</u>
Marihuana (Starters)	<u>154</u>	<u>\$23,100.00</u>
Hashish	<u>0</u> grams	<u>\$ 0.00</u>
Heroin	<u>19.7</u> grams	<u>\$ 2955.00</u>
LSD	<u>0</u> hits	<u>\$ 0.00</u>
Methamphetamine	<u>11.5</u> grams	<u>\$ 1150.00</u>
Other <u>MDMA/PSYLOCYBIN</u>	<u>0</u>	<u>\$ 0.00</u>
	TOTAL	<u>969,905.00</u>

Cash Seized:	Value	<u>\$ 23,076.40</u>
No. of Guns Seized <u>24</u>	Value	<u>\$ 10,000.00</u>
No. of Vehicles seized: <u>9</u>	Value	<u>\$ 45,000.00</u>
Seized Grow Equipment:	Value	<u>\$ 14,600.00</u>
Seized Clandestine Lab Equip:	Value	<u>\$ 0.00</u>
Other Seizures:	Value	<u>\$172,645.00</u>
	TOTAL	<u>\$265,321.40</u>

GRAND TOTAL: \$1,235,226.40

SPECIFIC ENFORCEMENT ACTIVITY:

22 No. of Search Warrants
63 No. of Search Warrant Assists
17 No. of Knock and Talks
14 No. of Knock and Talk Searches
42 No. of Controlled Buys
13 No. of Undercover Buys
0 No. of Reverse Investigations
17 No. of CI's Cultivated
20 No. of Wire Applications
04 No. of Admin. Inquiries

INVESTIGATIVE TIME SUMMARY:

Number of hours:

1035 Case Development
730 Report Writing
357 Surveillance
844 Assist Other Agencies
45 Training/Seminars
17 Court
19 Attend Shift Briefings
44 Meetings
447 Vacation/Comp Time
110 Other

EASTSIDE NARCOTICS TASK FORCE

QUARTERLY SUMMARY OF ACTIVITY

April/May/June, 1997

74 Cases assigned Current Quarter

CASE DISPOSITION

Number of Cases:

41 Closed/Arrest
15 Closed/Summons-Filing
13 Closed/Other
07 Inactive
00 Unfounded
00 Re-assigned
NA Assigned
37 Tip Sheets

PERSONS ARRESTED/CHARGED

Number of:

41 Felony Adult Arrests
0 Felony Juvenile Arrests
3 Misdemeanor Adult Arrests
0 Misdemeanor Juvenile Arrests
5 Charged w/o Arrest (Felony)
0 Charged w/o Arrest (Misd.)
5 Warrant Arrests
10 FIR's

SPECIFIC CLASSIFICATIONS OF CASES ASSIGNED FOR INVESTIGATION

Number of:

VICE INVESTIGATIONS:

0 Gambling
5 Prostitution
0 Pornography
0 Other

NARCOTIC INVESTIGATIONS:

06 Possession
61 Delivery/Sale
11 Reliability Buys
00 Prescription/Forgery
19 Marihuana Grow Operations
00 Clandestine Labs
01 (Other)

OTHER STATISTICAL INFORMATION

SPECIFIC SEIZURES:

Type/Amount/Value of Narcotics seized for current month:

<u>TYPE:</u>	<u>AMOUNT:</u>	<u>VALUE:</u>
Cocaine: Rock	<u>13.6</u> grams	<u>\$ 1,360.00</u>
Powder	<u>163.7</u> grams	<u>\$16,770.00</u>
Marihuana (Processed)	<u>6573.0</u> grams	<u>131,460.00</u>
Marihuana (Plants)	<u>1447.0</u>	<u>2,894,000.00</u>
Marihuana (Starters)	<u>644.0</u>	<u>\$96,600.00</u>
Hashish	<u>0.0</u> grams	<u>\$ 0.00</u>
Heroin	<u>77.2</u> grams	<u>\$ 11580.00</u>
LSD	<u>31.0</u> hits	<u>\$ 155.00</u>
Methamphetamine	<u>29.2</u> grams	<u>\$ 2920.00</u>
Other Valium	<u>200.0</u> tabs	<u>\$ 400.00</u>
	TOTAL	<u>3,155,245.00</u>

Cash Seized:	Value	<u>\$ 21,251.00</u>
No. of Guns Seized <u>23</u>	Value	<u>\$ 12,400.00</u>
No. of Vehicles seized: <u>5</u>	Value	<u>\$ 31,000.00</u>
Seized Grow Equipment:	Value	<u>\$ 29,000.00</u>
Seized Clandestine Lab Equip:	Value	<u>\$ 0.00</u>
Other Seizures: computer server	Value	<u>\$ 20,100.00</u>
	TOTAL	<u>\$113,752.00</u>

GRAND TOTAL: \$3,268,997.00

SPECIFIC ENFORCEMENT ACTIVITY:

23 No. of Search Warrants
79 No. of Search Warrant Assists
26 No. of Knock and Talks
17 No. of Knock and Talk Searches
44 No. of Controlled Buys
06 No. of Undercover Buys
00 No. of Reverse Investigations
26 No. of CI's Cultivated
11 No. of Wire Applications
12 No. of Admin. Inquiries

INVESTIGATIVE TIME SUMMARY:

Number of hours:

925 Case Development
630 Report Writing
301 Surveillance
1013 Assist Other Agencies
348 Training/Seminars
49 Court
10 Attend Shift Briefings
45 Meetings
374 Vacation/Comp Time
38 Other

EASTSIDE NARCOTICS TASK FORCE
Quarterly Activity Report

3RD QTR 1997

ENTF

<u>Case Disposition</u>	<u>Number of Cases</u>
Ongoing Investigations (Carry Over)	33
New Cases This Month	51
Sub-Total	84
Closed Cases - Arrest	27
Closed Cases - Summons/Filing	3
Closed Cases - Other	8
Inactivated Cases	14
Unfounded Cases	2
Sub-Total	54
Total	30

<u>Persons Arrested / Charged</u>	<u>Number of Persons</u>
Felony Adult Arrests	35
Felony Juvenile Arrests	1
Misdemeanor Adult Arrests	2
Misdemeanor Juvenile Arrests	0
Charged w/o Arrest(Felony)	0
Charged w/o Arrest (Misd.)	2
Warrant Arrests	0
Total	40
FIR's	2

<u>Tip Sheet Disposition</u>	<u>Number of Cases</u>
Ongoing Tip Sheets (Carry Over)	0
New Tip Sheets This Month	0
Sub-Total	0
Closed Tip - Arrest	0
Closed Tip - Other	0
Inactivated/Unfounded Tips	0
Sub-Total	0
Total	0

Specific Classifications of New Cases

<u>Vice</u>	<u>Number of Cases</u>	<u>Year To Date</u>	<u>Narcotics</u>	<u>Number of Cases</u>	<u>Year To Date</u>
Gambling	0		Possession	4	
Prostitution	1		Delivery/Sale	53	
Pornography	0		Reliability Buys	9	
Other	0		Prescription/Forgery	1	
			Marijuana Grow Ops.	3	
			Clandestine Labs	0	
			New Tip Sheets	3	
			Other	0	

Other Statistical Information / Specific Seizures

<u>Controlled Substance</u>	<u>Quantity</u>		<u>Value</u>
Cocaine - Rock	1.4	grams	140.00
Cocaine - Powder	1653	grams	165,300.00
Marijuana - Processed	1309	grams	26,180.00
Marijuana - Plants	31	plants	62,000.00
Marijuana - Starters	125	starters	18,750.00
Hashish	0	grams	0.00
Heroin	277	grams	41,550.00
LSD	20	hits	100.00
Methamphetamine	146	grams	14,600.00
Other	0	xxxxx	0.00
Sub-Total			328,620.00

<u>Other Seizures</u>	<u>Quantity</u>		<u>Value</u>
Cash Seized	xxxxx		17,773.21
Guns Seized	54		24,000.00
Vehicles Seized	10		60,850.00
Grow Equipment Seized	xxxxx		2,500.00
Clandestine Lab Equip. Seized	xxxxx		0.00
Other			1,000.00
Sub-Total			106,123.21

Total Seizures 434,743.21

<u>Special Enforcement Activity</u>	<u>Number</u>	<u>Investigative Time Summary</u>	<u>Number of Hours</u>
Search Warrants	9	Case Development	583
Search Warrant Assists	21	Report Writing	525
Knock and Talks	6	Surveillance	215
Knock and Talk Searches	4	Assist Other Agencies	348
Controlled Buys	43	Training/Seminars	211
Undercover Buys	13	Court	27
Reverse Investigations	3	Shift Briefings	7
CI's Cultivated	7	Meetings	23
Wire Applications	7	Vacation/Comp Time	531
Admin. Inquiries	12	Other	128
Total Hours			2598

**EASTSIDE NARCOTICS TASK FORCE
 QUARTERLY SUMMARY OF ACTIVITY**

Oct, Nov, Dec. 1997

ENTF

<u>Case Disposition</u>	<u>Number of Cases</u>
Ongoing Investigations (Carry Over)	66
New Cases This Month	31
Sub-Total	97
Closed Cases - Arrest	19
Closed Cases - Summons/Filing	1
Closed Cases - Other	2
Inactivated Cases	0
Unfounded Cases	0
Sub-Total	22
Total	75

<u>Persons Arrested / Charged</u>	<u>Number of Persons</u>
Felony Adult Arrests	27
Felony Juvenile Arrests	3
Misdemeanor Adult Arrests	2
Misdemeanor Juvenile Arrests	0
Charged w/o Arrest(Felony)	0
Charged w/o Arrest (Misd.)	0
Warrant Arrests	3
Total	35
FIR's	5

<u>Tip Sheet Disposition</u>	<u>Number of Cases</u>
Ongoing Tip Sheets (Carry Over)	0
New Tip Sheets This Month	0
Sub-Total	0
Closed Tip - Arrest	0
Closed Tip - Other	0
Inactivated/Unfounded Tips	0
Sub-Total	0
Total	0

Specific Classifications of New Cases

<u>Vice</u>	<u>Number of Cases</u>	<u>Year To Date</u>	<u>Narcotics</u>	<u>Number of Cases</u>
Gambling	0		Possession	8
Prostitution	0	6	Delivery/Sale	40
Pornography	0		Reliability Buys	19
Other	0		Prescription/Forgery	2
			Marijuana Grow Ops.	5
			Clandestine Labs	1
			New Tip Sheets	14
			Other	0

Other Statistical Information / Specific Seizures

<u>Controlled Substance</u>	<u>Quantity</u>		<u>Value</u>
Cocaine - Rock	20.8	grams	2,080.00
Cocaine - Powder	448.6	grams	44,860.00
Marijuana - Processed	258.9	grams	5,178.00
Marijuana - Plants	151	plants	302,000.00
Marijuana - Starters	42	starters	6,300.00
Hashish	0	grams	0.00
Heroin	10.8	grams	1,620.00
LSD	0	hits	0.00
Methamphetamine	850.5	grams	85,050.00
Other	0	xxxxx	0.00
		Sub-Total	447,088.00

<u>Other Seizures</u>	<u>Quantity</u>		<u>Value</u>
Cash Seized	xxxxx		11,621.23
Guns Seized	0		0.00
Vehicles Seized	9		64,400.00
Grow Equipment Seized	xxxxx		9,000.00
Clandestine Lab Equip. Seized	xxxxx		1,000.00
Other			9,000.00
		Sub-Total	95,021.23

Total Seizures 542,109.23

<u>Special Enforcement Activity</u>	<u>Number</u>	<u>Investigative Time Summary</u>	<u>Number of Hours</u>
Search Warrants	13	Case Development	692
Search Warrant Assists	25	Report Writing	606
Knock and Talks	9	Surveillance	123
Knock and Talk Searches	6	Assist Other Agencies	349
Controlled Buys	25	Training/Seminars	284
Undercover Buys	11	Court	86
Reverse Investigations	2	Shift Briefings	13
CI's Cultivated	18	Meetings	38
Wire Applications	18	Vacation/Comp Time	157
Admin. Inquiries	23	Other	167
		Total Hours	2515

EASTSIDE NARCOTICS TASK FORCE
Annual Summary of Activity

1997

ENTF

<u>Case Disposition</u>	<u>Number of Cases</u>
Ongoing Investigations (Carry Over)	NA
New Cases This Month	NA
Sub-Total	0
Closed Cases - Arrest	138
Closed Cases - Summons/Filing	44
Closed Cases - Other	28
Inactivated Cases	25
Unfounded Cases	5
Sub-Total	240
Total	240

<u>Persons Arrested / Charged</u>	<u>Number of Persons</u>
Felony Adult Arrests	159
Felony Juvenile Arrests	7
Misdemeanor Adult Arrests	9
Misdemeanor Juvenile Arrests	1
Charged w/o Arrest(Felony)	5
Charged w/o Arrest (Misd.)	2
Warrant Arrests	12
Total	195
FIR's	29

<u>Tip Sheet Disposition</u>	<u>Number of Cases</u>
Ongoing Tip Sheets (Carry Over)	0
New Tip Sheets This Month	0
Sub-Total	0
Closed Tip - Arrest	0
Closed Tip - Other	0
Inactivated/Unfounded Tips	0
Sub-Total	0
Total	0

Specific Classifications of New Cases

<u>Vice</u>	<u>Number of Cases</u>	<u>Year To Date</u>	<u>Narcotics</u>	<u>Number of Cases</u>
Gambling	0		Possession	36
Prostitution	0		Delivery/Sale	220
Pornography	0		Reliability Buys	56
Other	0		Prescription/Forgery	3
			Marijuana Grow Ops.	39
			Clandestine Labs	1
			New Tip Sheets	107
			Other	1

Other Statistical Information / Specific Seizures

<u>Controlled Substance</u>	<u>Quantity</u>		<u>Value</u>
Cocaine - Rock	86.4	grams	8,640.00
Cocaine - Powder	2679.6	grams	267,960.00
Marijuana - Processed	22251.4	grams	445,028.00
Marijuana - Plants	1936	plants	3,872,000.00
Marijuana - Starters	965	starters	144,750.00
Hashish	0	grams	0.00
Heroin	384.7	grams	57,705.00
LSD	51	hits	255.00
Methamphetamine	1037.2	grams	103,720.00
Other	200	xxxxx	400.00
		Sub-Total	4,900,458.00

<u>Other Seizures</u>	<u>Quantity</u>		<u>Value</u>
Cash Seized	xxxxx		73,721.84
Guns Seized	101		46,400.00
Vehicles Seized	33		201,250.00
Grow Equipment Seized	xxxxx		55,100.00
Clandestine Lab Equip. Seized	xxxxx		1,000.00
Other			202,745.00
		Sub-Total	580,216.84

Total Seizures 5,480,674.84

<u>Special Enforcement Activity</u>	<u>Number</u>	<u>Investigative Time Summary</u>	<u>Number of Hours</u>
Search Warrants	67	Case Development	3235
Search Warrant Assists	188	Report Writing	2491
Knock and Talks	58	Surveillance	996
Knock and Talk Searches	41	Assist Other Agencies	2554
Controlled Buys	154	Training/Seminars	888
Undercover Buys	43	Court	179
Reverse Investigations	5	Shift Briefings	49
CI's Cultivated	68	Meetings	150
Wire Applications	56	Vacation/Comp Time	1509
Admin. Inquiries	51	Other	443
		Total Hours	12494

CONTROLLED SUBSTANCES SEIZED

- ▶ CANNABIS
- ▶ MARIJUANA - UNRECEIVED
- ▶ MARIJUANA - REFINISHED
- ▶ MARIJUANA - PLANTS
- ▶ MARIJUANA - STARTERS
- ▶ HEROIN
- ▶ METHAMPHETAMINE
- ▶ COCAINE
- ▶ LSD
- ▶ OTHER

CONTROL

SEIZURES

GRAND COCAINE SEIZURES

▶ 1993	6,157.8
▶ 1994	25,066.9
▶ 1995	85,417.2
▶ 1996	2,622.4
▶ 1997	2,766

80,000

60,000

40,000

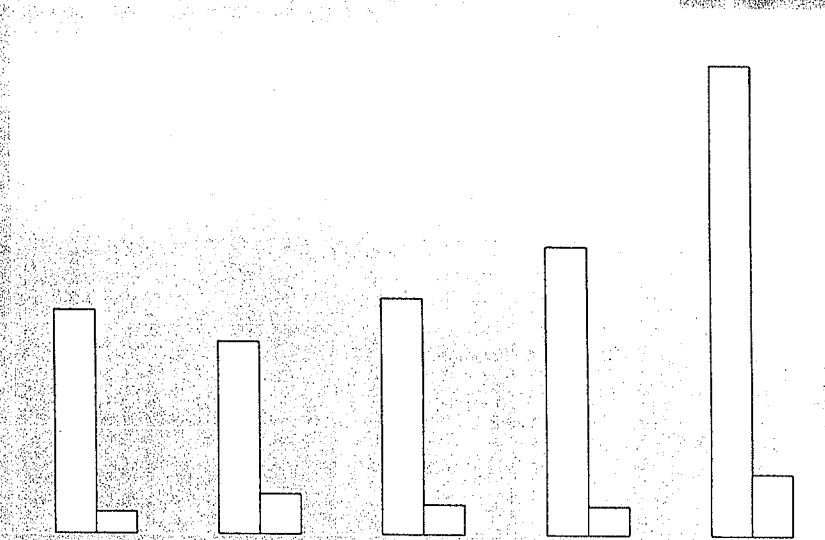


COMPARISON

MARIJUANA SEIZURES

- ▶ 1993 - 10,511.8 GRAMS
1,012 PLANTS
- ▶ 1994 - 9,080.8 GRAMS
1,893 PLANTS
- ▶ 1995 - 11,143.2 GRAMS
1,401 PLANTS
- ▶ 1996 - 13,648.8 GRAMS
1,358 PLANTS
- ▶ 1997 - 22,251.4 GRAMS
2,901 PLANTS

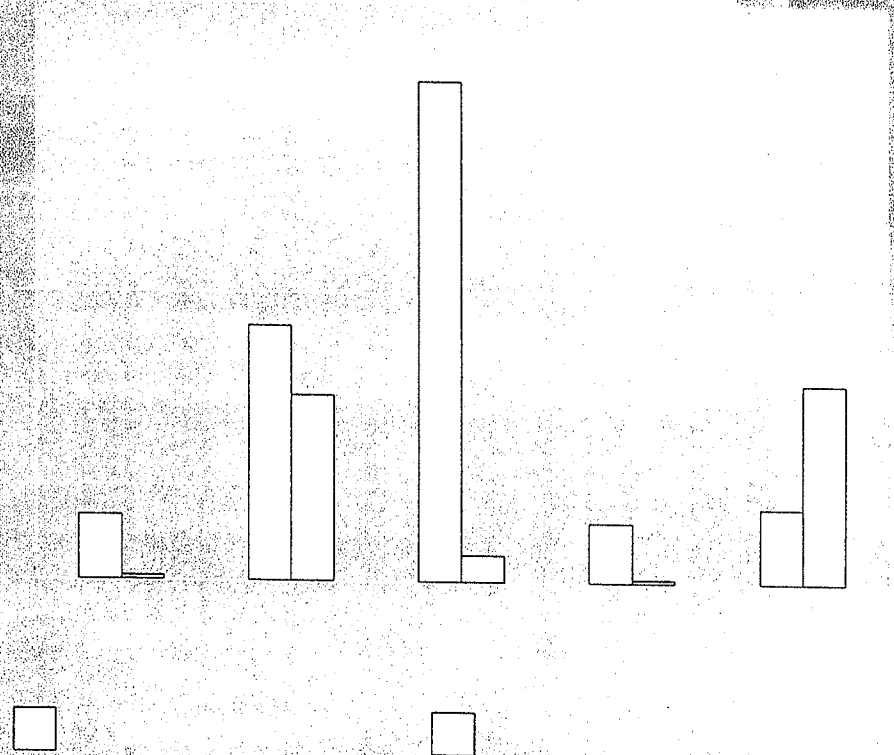
GRAMS
PLANTS



CONTROL

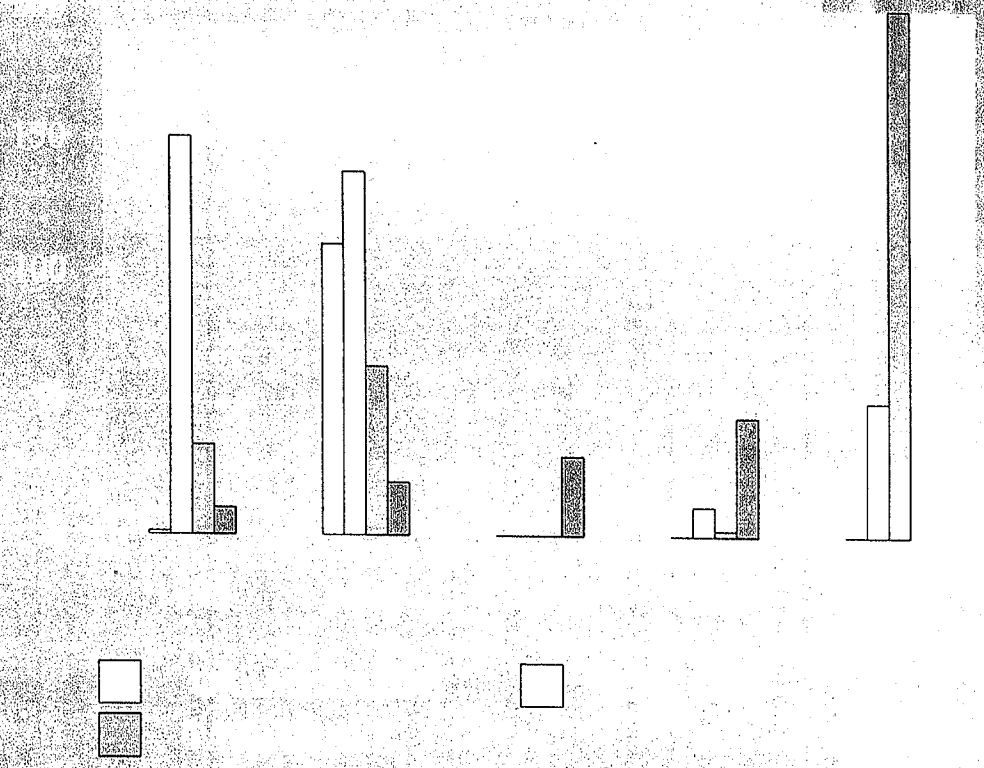
GRAM HEROIN & METHADONE

▶ 1993 -	332.6 HEROIN	1500
	21.9 METH	2500
▶ 1994 -	1,327.1 HEROIN	2500
	956.9 METH	2500
▶ 1995 -	2,588.6 HEROIN	1500
	136 METH	2500
▶ 1996 -	306.7 HEROIN	2500
	17.3 METH	2500
▶ 1997 -	387.7 HEROIN	2500
	1,037.2 METH	2500



CONTROLLED SUBSTANCES SEIZED

- ▶ 1993 - HASISH - 1 GRAM
 - LSD - 3063 HITS
 - OTHER - 34 TABS
 - ▶ 1994 - HASISH - 110 GRAMS
 - LSD - 137 HITS
 - OTHER - 64 TABS
 - ▶ 1995 - HASISH - NONE
 - LSD - NONE
 - OTHER - NONE
 - ▶ 1996 - HASISH - NONE
 - LSD - 1 HITS
 - OTHER - 1 TABS
 - 100 GRAMS
 - ▶ 1997 - HASISH - NONE
 - LSD - 31 HITS
 - 400 - TABS
- 1993 - LSD only 150 hits listed
 1996 - HASISH grams not listed

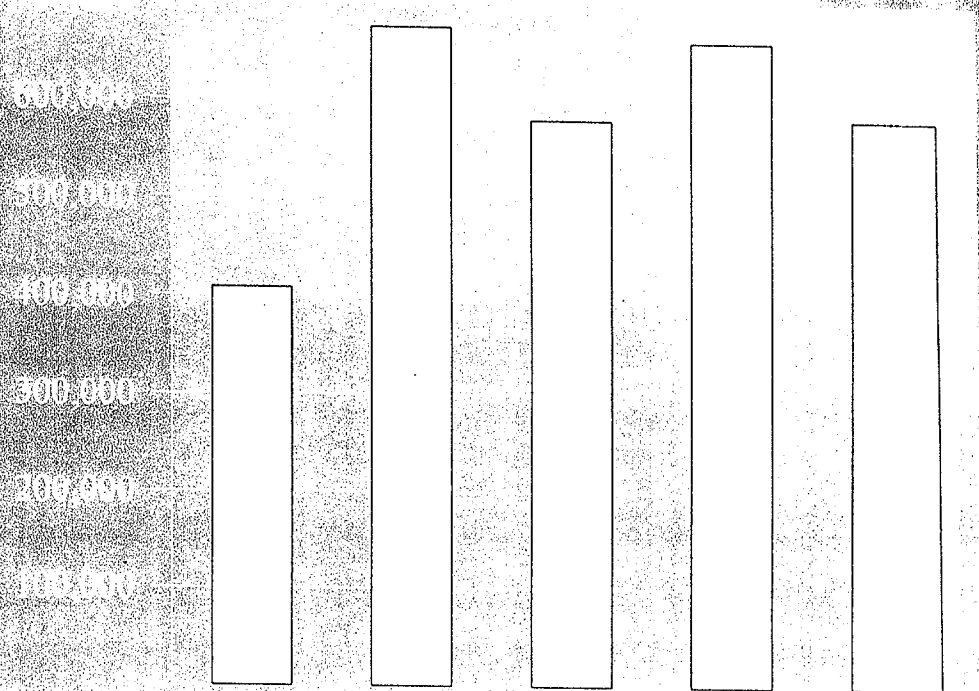


ASSET SEIZURES

COMPARISON BY YEAR

- ▶ 1993 - \$407,282
- ▶ 1994 - \$673,644
- ▶ 1995 - \$578,739
- ▶ 1996 - \$659,680
- ▶ 1997 - \$580,216

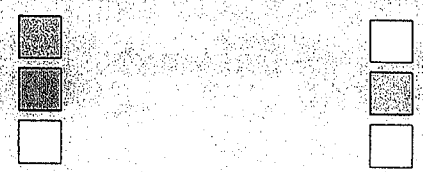
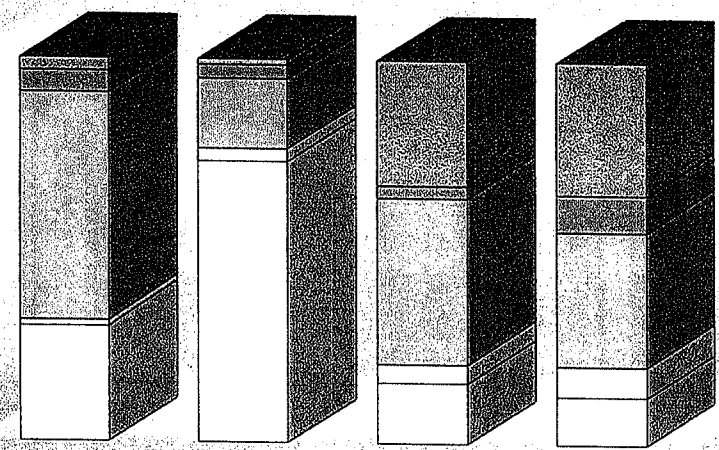
Asset Seizures include: Cash,
Guns, Vehicles, Grow
Equipment and Other



STATISTICS

ATTACHMENT

- ▶ CASE SEIZED
- ▶ GUNS SEIZED
- ▶ EQUIPMENT SEIZED
- ▶ SEIZED LAB EQUIPMENT
- ▶ OTHER SEIZED



Eastside Narcotics Task Force

Activity by Year

	1993	1994	1995	1996	1997
Cases closed/arrest/summons:	188	145	176	214	182
Cases closed other:	48	47	61	57	28
Inactive:	29	28	5	2	25
Unfounded:	5	0	7	17	5
Re-assigned:	22	6	5	143	0
Felony Adult Arrests:	178	188	198	164	159
Felony Juvenile Arrests:	5	13	7	7	7
Misdemeanor Adult Arrests:	13	15	13	9	9
Misdemeanor Juvenile Arrests:	1	2	6	1	1
Charged W/O Arrest/Felony:	10	4	4	5	5
Charged W/O Arrest/Misd:	0	2	4	5	2
Total Number of Arrests:	207	243	232	191	183

SPECIFIC CLASSIFICATION OF CASES ASSIGNED FOR INVESTIGATION

Vice Investigations:

Gambling:	3	2	0	1	0
Prostitution:	2	5	0	3	0
Pornography:	1	0	0	0	0
Other:	0	0	0	3	0

Narcotic Investigations:

Possession:	35	47	229	76	36
Delivery/Sale:	188	133	214	229	220
Prescription Forgery:	0	5	2	0	3
Marijuana Grows:	32	29	44	23	39
Labs:	0	1	3	5	1
Other:	5	9	5	6	1

SPECIFIC ENFORCEMENT ACTIVITY

Search Warrants:	72	91	64	79	67
Search Warrant Assists:	159	211	211	213	188
Knock and Talks:	53	90	55	64	58
Undercover Buys:	130	69	69	65	43
Controlled Buys:	116	100	140	193	154
Reverse Investigations:	5	6	4	5	5
CI's Cultivated:	58	70	87	120	68
Tip Sheets:					107

**EASTSIDE NARCOTICS TASK FORCE
1997 STATISTICS**

<u>ACTIVITY TOTALS</u>	<u>1997</u>	<u>1996</u>	<u>% OF CHANGE</u>
Cases Closed/Arrest/Summons:	182	214	-15%
Cases Closed/Other:	58	57	+02%
Felony Adult Arrests:	159	164	-03%
Felony Juvenile Arrests:	7	7	0%
Misdemeanor Adult Arrests:	9	9	0%
Misdemeanor Juvenile Arrests:	1	1	0%
Charged W/O Arrest/Felony:	5	5	0%
Charged W/O Arrest/Misdemeanor:	2	5	-60%
Total Number of Arrests:	183	191	-04%

SPECIFIC CLASSIFICATION OF CASES ASSIGNED FOR INVESTIGATIONS

NARCOTIC INVESTIGATIONS:

Possession:	36	76	-53%
Delivery/Sale:	220	229	-47%
Marijuana Grows:	39	23	+70%
Labs:			

SPECIFIC ENFORCEMENT ACTIVITY

Search Warrants:	67	79	-15%
Knock and Talks:	58	64	-09%
Knock and Talk Searches:	41	39	+05%
Number of Undercover Buys:	43	65	-34%
Number of Controlled Buys:	154	193	-20%
Number of Reverse Investigations:	5	5	00%
CI's Cultivated:	68	120	-43%

1997 Investigations Section Annual Report

SPECIFIC SEIZURES

	1997 Amount/Grams / Value		1996 Amount/Grams / Value	
Cocaine:	2,766.2	\$267,960	2,622.4	\$262,240
Marijuana:	22,251.4	445,028	13,684.8	273,797
Marijuana Plants:	1,936.0	3,872,000	810.0	1,620,000
Marijuana Starts:	965.0	144,750	548.0	82,500
Heroin:	384.7	57,705	306.7	45,855
LSD:	51.0	255	11.0	55
Methamphetamine:	1,037.2	103,720	17.3	1,730
Other:	200.0	400	2,147.2	1,681
TOTAL:		\$4,900,458		\$2,287,757

PERCENT OF CHANGE TOTAL = +114%

	1997 VALUE	1996 VALUE	% OF CHANGE
Cash Seized:	\$73,721.84	\$105,780.64	-30%
# Guns Seized: 101/77	46,400.00	32,700.00	+42%
# Veh. Seized: 33/28	201,250.00	282,600.00	%
Seized Grow Equipment:	55,100.00	20,700.00	+166%
Other Seizures:	202,745.00	217,900.00	-07%
TOTAL:	\$580,216.84	\$659,680.64	-12%

TOTAL DRUG / ASSET SEIZURES

\$5,480,674.84 \$2,947,437.60 +86%

1997 Investigations Section Annual Report

NARCOTICS SECTION

Performance Measures

	Actual 1992	Actual 1993	Actual 1994	Actual 1995	Actual 1996	Actual 1997	Estimate 1998	Estimate 1998
Outcome:								
1) Value of narcotics seized	1,295,926	1,435,097	2,238,134	9,810,627	2,287,757	4,900,458	4,900,000	5,000,000
2) Percentage of cases cleared	45	67.3	64.6	64.7	64.4	75.8	65	65
Efficiency:								
1) Number of cases per FTE	83.7	40.5	36.75	46.75	41.5	34.2	40	40
2) Cost per investigation	1,295	2,666	2,349	1,946	1,048	2,768	2,555	2,555
Effectiveness:								
1) Number of cases cleared by arrest	71	72	71	46	142	138	76	76
2) Amount of drugs seized per \$ spent	2.99	3.32	6.48	26.97	6.57	7.38	4.02	4.02
Workload:								
1) Number of enforcement actions (Search Wt., Knock & Talks, UC Buys, Controlled Buys)	120	197	194	186	213	322	210	210

NARCOTIC SECTION

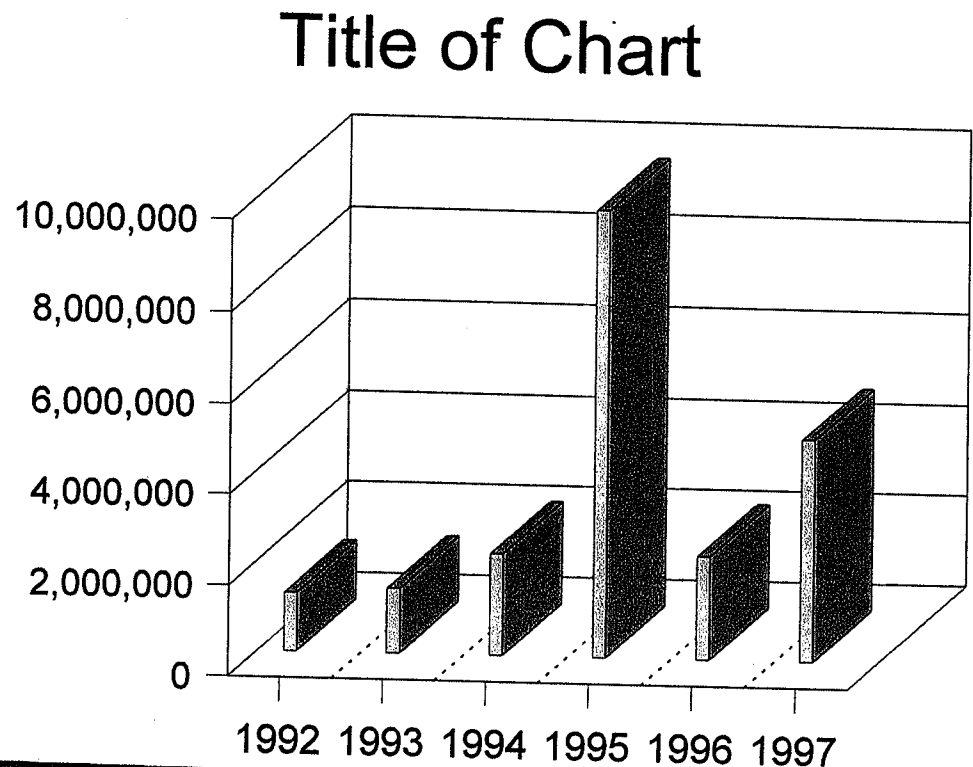
PERFORMANCE NEEDS

- OUTCOME
- EFFICIENCY
- EFFECTIVENESS
- WORKLOAD

OUTCOME

VALUE OF NARCOTICS SEIZED

- 1992 \$1,295,926
- 1993 \$1,435,097
- 1994 \$2,238,134
- 1995 \$9,810,627
- 1996 \$2,287,757
- 1997 \$4,900,458

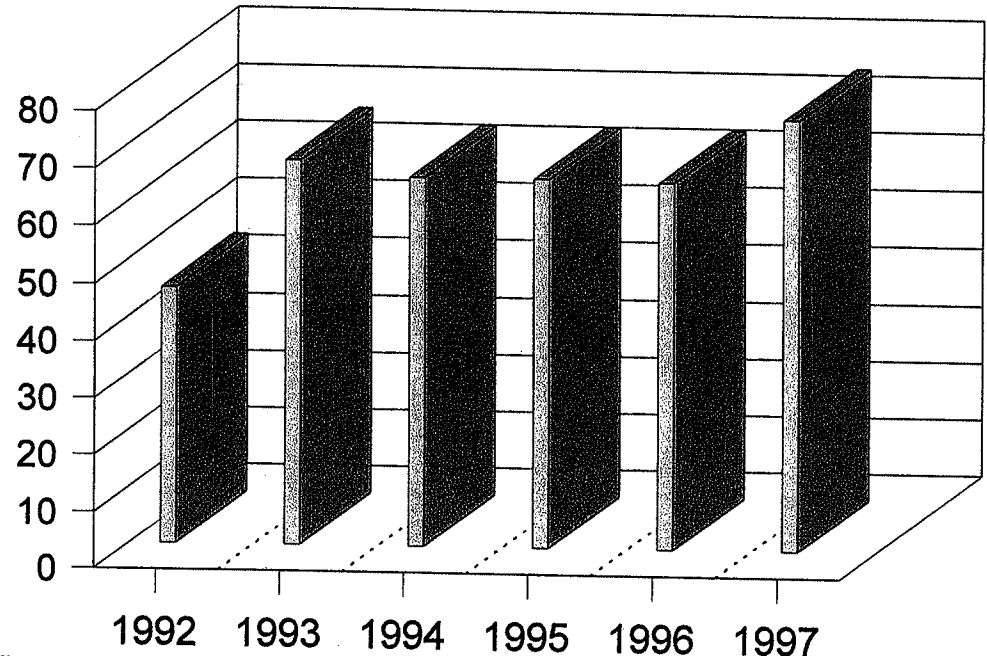


OUTCOME

PERCENTAGE OF CASES CLEARED

- 1992 45%
- 1993 67.3%
- 1994 64.6%
- 1995 64.7%
- 1996 65%
- 1997 75.8%

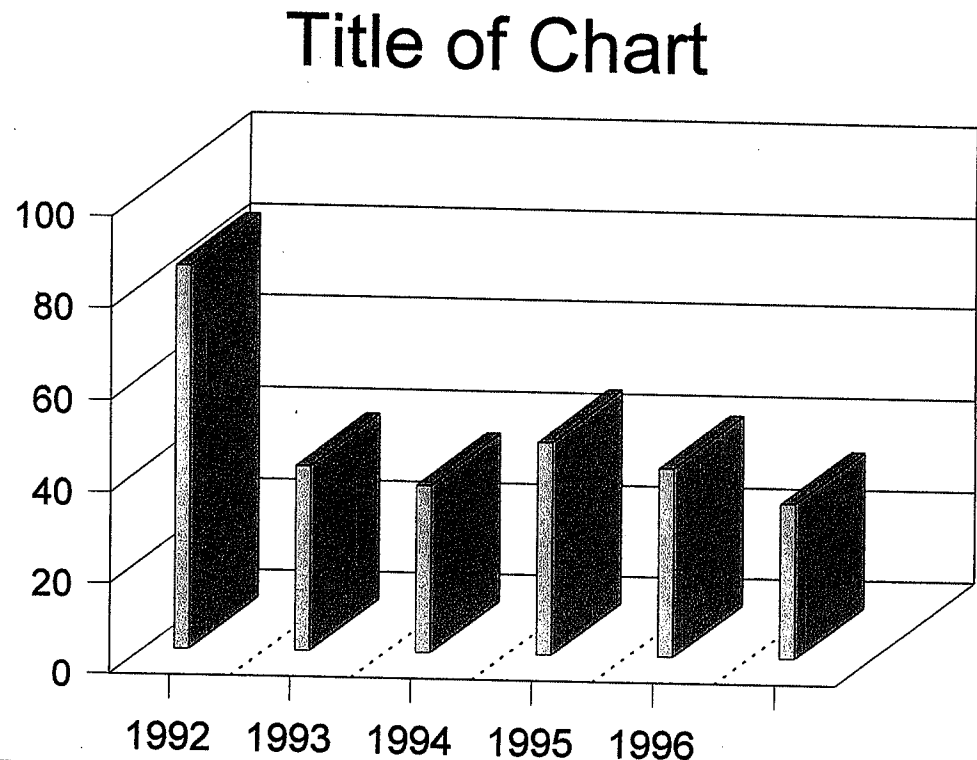
Title of Chart



EFFICIENCY

NUMBER OF CASES PER FTE

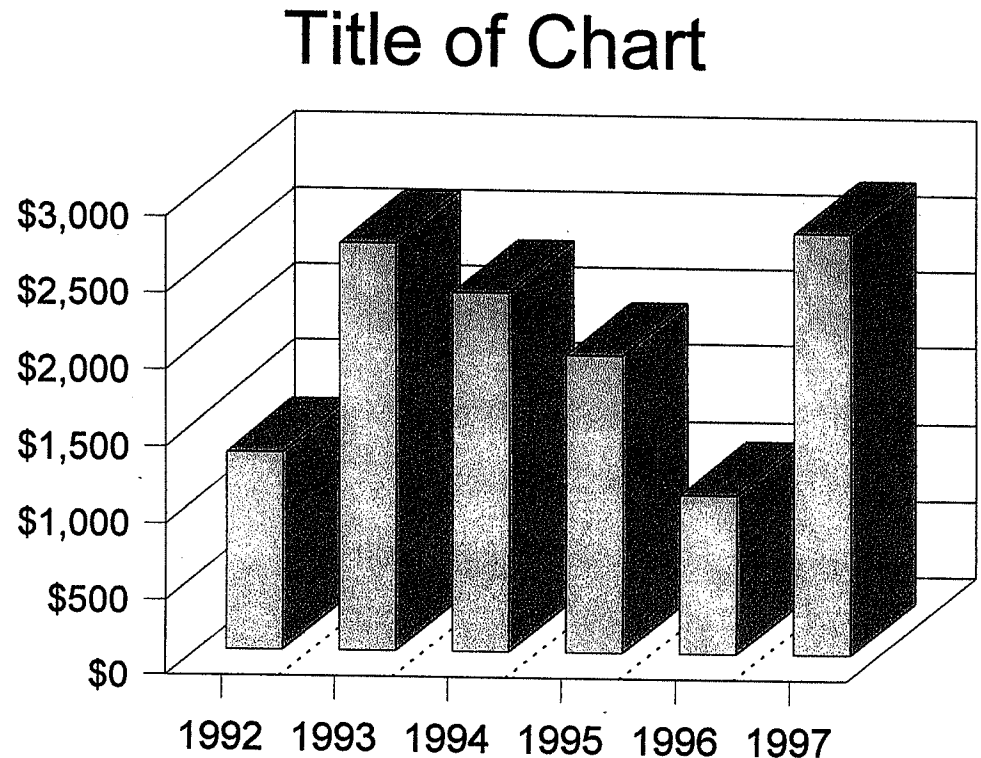
- 1992 83.7
- 1993 40.5
- 1994 36.75
- 1995 46.75
- 1996 41.5
- 1997 34.2



EFFICIENCY

COST PER INVESTIGATION

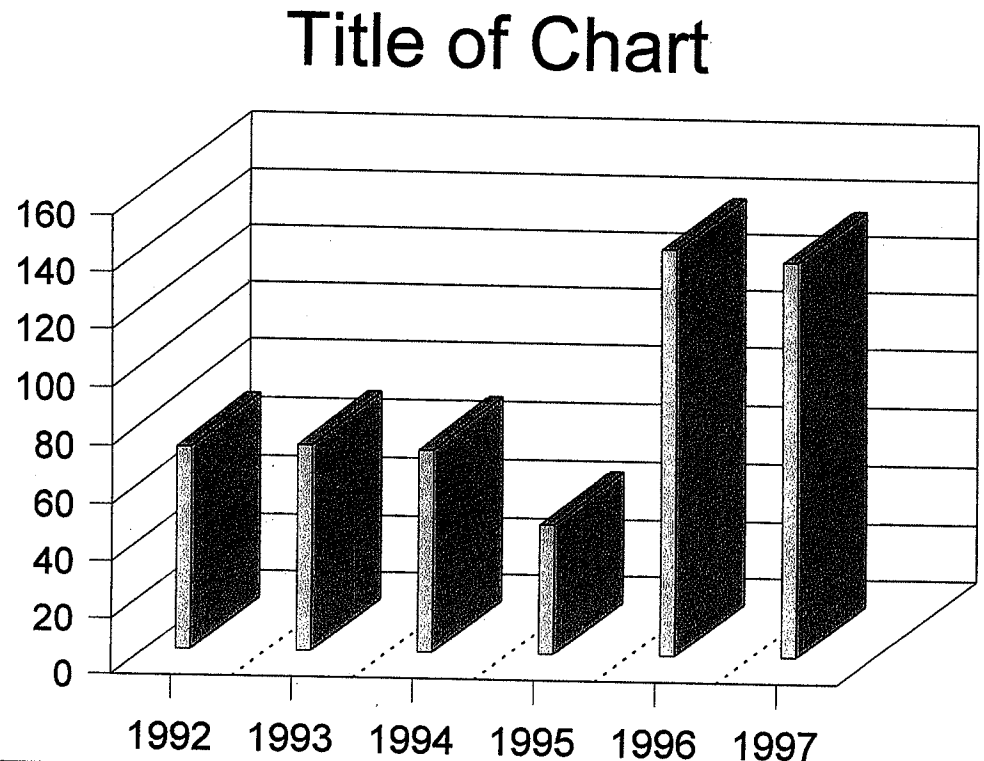
- 1992 \$1,295
- 1993 \$2,666
- 1994 \$2,349
- 1995 \$1,946
- 1996 \$1,048
- 1997 \$2,768



EFFECTIVENESS

NUMBER OF CASES CLEARED BY ARREST

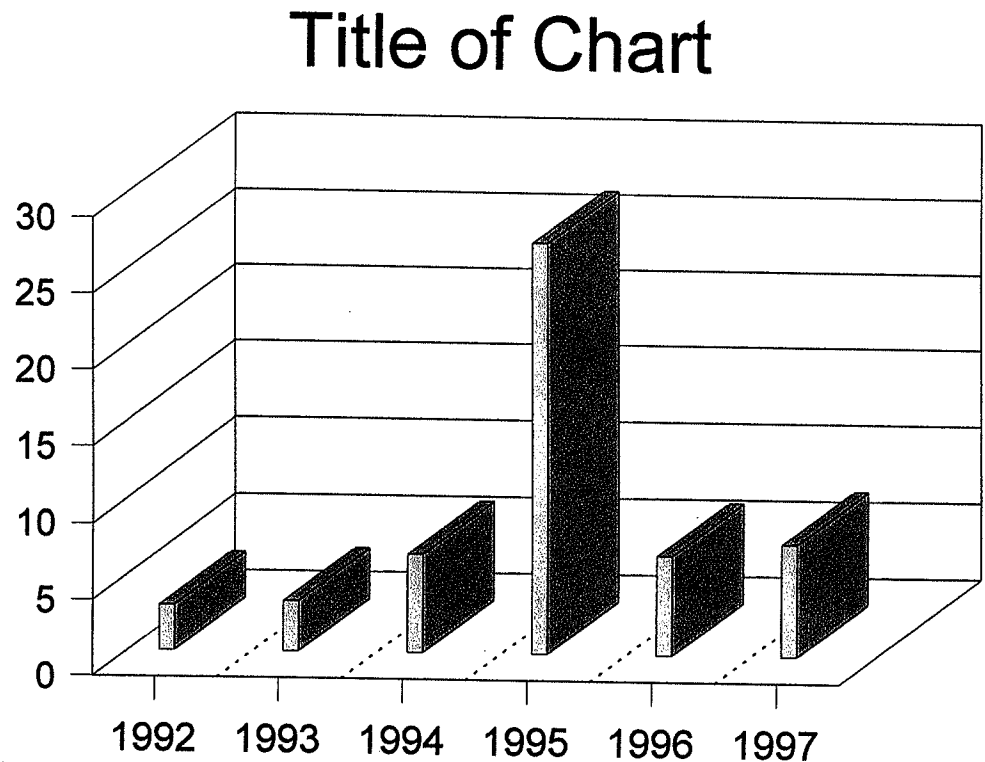
- 1992 71
- 1993 72
- 1994 71
- 1995 46
- 1996 142
- 1997 138



EFFECTIVENESS

AMOUNT OF DRUGS SEIZED PER \$ SPENT

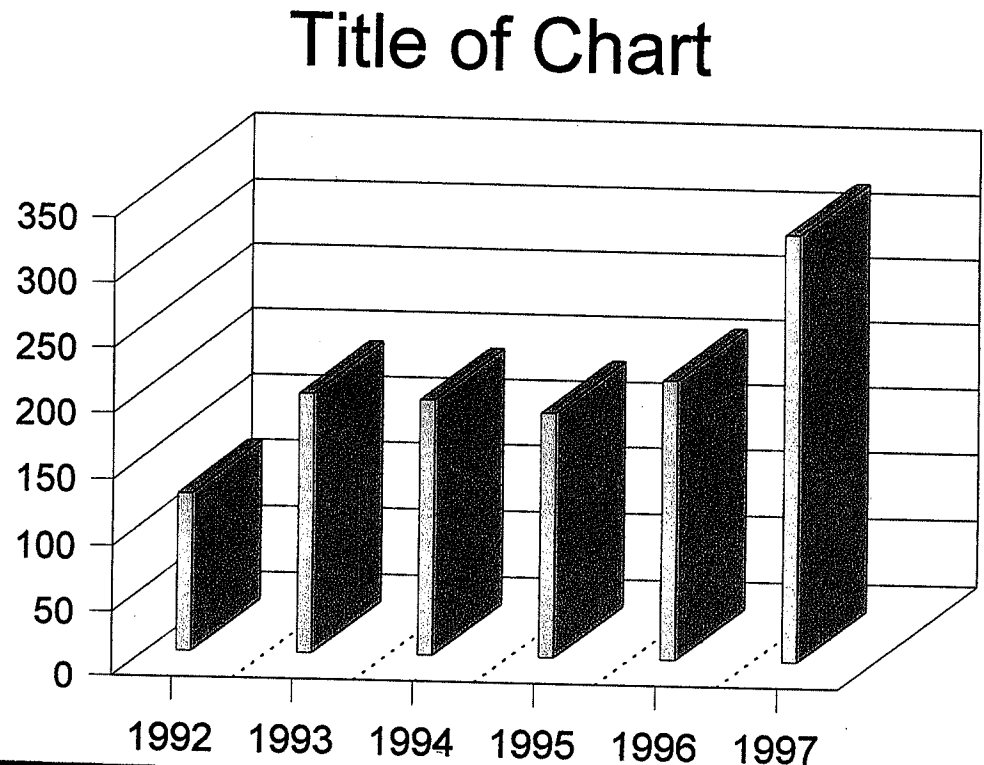
- 1992 2.99
- 1993 3.32
- 1994 6.48
- 1995 26.97
- 1996 6.57
- 1997 7.38



WORKLOAD

NUMBER OF ENFORCEMENT ACTIONS

- 1992 120
- 1993 197
- 1994 194
- 1995 186
- 1996 213
- 1997 327



EASTSIDE NARCOTICS TASK FORCE

1997 Summary of Training

- January 21-23: A detective attended the Body Wire Intercept School at WSCJTC.
- May 6-8: Three detectives attended the quarterly training of the Washington State Narcotics Investigators Association in Yakima.
- May 27-28: Five detectives attended the Washington State Vice Investigators conference in Everett.
- June 3-6: Six detectives attended the Western States Information network conference in Sacramento.
- August 25-29: One detectives attended the Drug Unit Commander course sponsored by the Institute of Police Technology and Management in Jacksonville, Florida..
- September 10-12: Six detectives attended the quarterly WSNIA training in Wenatchee.
- September 15-20: One detective attended a Basic Narcotics Investigator course at WSCJTC.
- October 20-24: Four detectives attended an Advanced Narcotic Investigator course at WSCJTC.
- November 22-24: One detective attended the California Narcotics Officer's Association conference in Monterey, California.
- December 3-5: Two detectives attended the WSNIA/ONEA joint conference in Beaverton, Oregon.
- December 8-12: Two detectives attended a course on Spanish for Law Enforcement which was sponsored by the military JTF6 and held at the WSCJTC.

Persons Crimes/Juvenile Assault Units

The Persons Unit and Juvenile Assault Unit are separate entities that report to the same supervisor. Although they mutually support each other in some investigations, statistics and other data are presented separately in this report to illuminate their individual performance and responsibilities.

Persons Crimes Unit Mission

To provide investigative services for crimes against people within the city of Bellevue.

Organization of Persons Crimes Unit

The Crimes Against Persons Unit consists of one lieutenant and three detectives. The Persons Crimes detectives are assigned to investigate the following types of crimes: homicide, robbery, rape and all other sex offenses, assaults and other crimes that are committed against a person.

In addition, Persons detectives assist patrol personnel with crime scene processing, coordination and information services, and provide in-house training to Bellevue Police Officers as well as Bellevue Fire Medics and Overlake Hospital nursing staff in the area of forensics.

Significant Organizational Changes in the Persons Unit 1997

March: Major Tim Johnson was transferred from command of the Investigations Section to the Traffic Section. Major Dave Gans who was transferred from the Records Section replaced him.

September: Lieutenant Ed Mott who had served as the Persons Crimes Supervisor for 6 years was transferred to the White Collar Unit. Lieutenant Bill Quinn who was transferred from the Property Crimes Unit replaced him.

September: The Identification Section which had been organizationally placed under the Persons Lieutenant was transferred to be directly supervised by the Investigations Major.

September: Implemented a 4/10 work plan.

September: Implemented a new case management system. Detectives meet with the supervisor once a month and review all cases that are currently assigned to the detective. Each case is reviewed to insure that it is being properly and promptly investigated.

Significant Investigations 1997

Murders

There were more homicides in the City of Bellevue during 1997 than any other previous year. Nine people were murdered in the city in 4 separate incidents. Three of the four incidents involved the death of one person.

January: Detective Jeff Gomes was the lead investigator in the murders of the four members of the Wilson family in Woodridge. Kim Wilson, 20-year-old female, was found strangled and beaten to death in a small park in Woodridge. Detectives went to her nearby residence to notify her parents of her death. At the house they found that both parents and her 17-year-old sister had also been beaten to death.

Within a week of the murders detectives, led by Jeff Gomes were able to arrest two local teenage males for the murders. One of the suspects confessed to the crime. Physical evidence connecting the suspects with the crime was also found. Both are in the King County Jail awaiting trial that is scheduled to begin in May 1998.

June: Sam Lau, a 55 year old Chinese male, took his two sons 17 and 21 years old, and his 49 year old wife into a bedroom of their house where he shot and killed them. He then shot and killed himself. Detective Bob Thompson was the lead investigator and so far has been unable to find a definitive reason for Sam's actions.

September: Three-year-old Aubrey Kouchalakakis was picked up by her father David for a visitation. The parents are divorced. Aubrey was not returned to her mother in the appropriate time. The mother took a few days trying to find Aubrey. Being unsuccessful, she reported her missing to the police department. Patrol checked the father's house near Robinswood Park. They forcefully entered the house and found Aubrey and her father dead in the basement. Detective Constantine who was the lead investigator was able to determine that the father had shot and killed Aubrey while she slept. He also killed both of his dogs then shot and killed himself at the foot of Aubrey's bed.

December: Donald Case had been out celebrating his 21st birthday when he returned to his apartment at the Foothills Commons. Inside of the apartment two Issaquah teenagers who were armed with an Uzi and a shotgun confronted him. The suspect with the Uzi told Case that he wanted the \$100 dollars he had loaned him. Case told him that he did not have the money. After persistent demands from the suspect to pay up or he would shoot,

Case said go ahead and shoot because he did not have the money. The suspect shot him 6 times and killed him in front of a number of witnesses. Detective Jerry Johnson was the lead investigator. Both suspects were arrested within 12 hours of the murder and are currently in the King County Jail awaiting trial.

Other Interesting Investigations

97-10821:

Manufacture of Explosive Device: A small boat washed up on shore in the Newport Shores area of the city. Two City workers found the boat. One of the workers saw a strange device inside of the boat and took it out. The other employee thought that it looked like a bomb. The one holding the device immediately dropped it and called police. It was discovered to in fact be an explosive device. Detective Thompson was assigned the case.

Through his follow-up he was able to identify who owned the boat and where the suspect lived. Other information he gathered led him to establish that the owner of the boat was probably the builder of the bomb.

Along with Mercer Island detectives and the FBI, he went to the Mercer Island residence of the suspect. The suspects' wife met them at the door. He told her why they were there. She told them that her husband had a problem with building bombs and just the night before she had prayed that someone would come and stop him. Bob told her that her request got through. They contacted the suspect who admitted to everything. The King County Prosecutor is filing charges.

Interesting note: the suspect is an heir to the Miracle-Grow fertilizer fortune who was removed from the company. He was the Blacksheep of the family.

Wades Gunshop:

Detective Thompson investigated two deaths at this location.

The first incident involved a large group of people from a Mormon Church in Redmond. One of the members took this group to Wades to teach them how to handle guns. A woman student was shooting a small caliber handgun. The instructor gave her a 44 magnum to shoot. When she shot the 44 she was unable to control the recoil. The gun came back to near her left ear pointing at the face of the instructor who was standing just behind her left side. She pulled the trigger while the gun was in this position. The instructor caught the bullet in the head. He died.

The second incident happened two months later. A subject came into Wade's range, fired a few rounds, then turned the gun to his head and shot and killed himself.

Persons Unit Statistics by Detective 1997

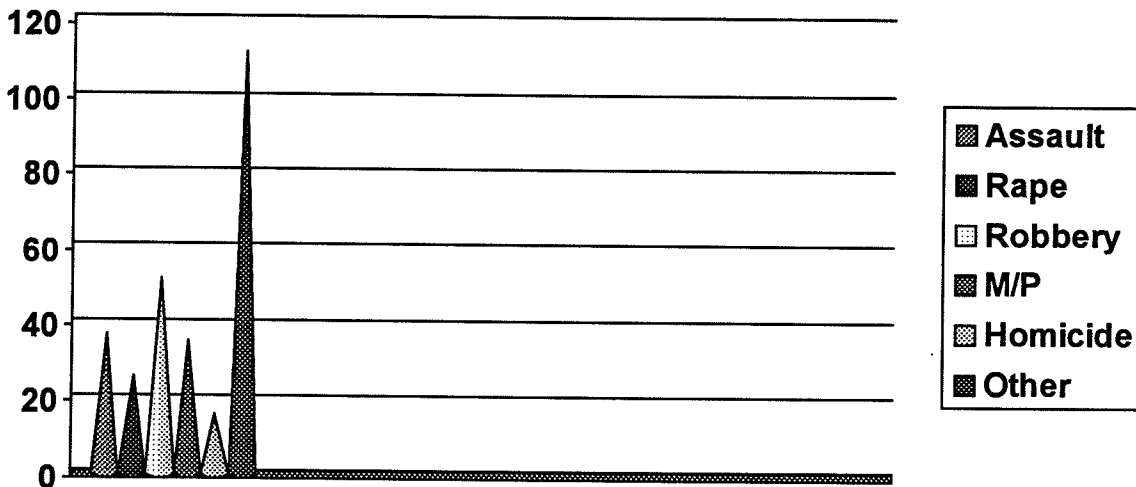
	<u>Case Assigned</u>	<u>Cases Cleared</u>	<u>% Cleared</u>
Detective Robert Thompson:	115	80	70%
Detective Jerry Johnson:	73	56	77%
Detective Jeff Gomes:	90	31	34%

Total Person Unit Statistics 1997

Types of Cases Assigned:

Assault	37
Rape	26
Robbery	52
Missing Persons	35
Homicide	16
Other	112

(Sex Crimes, Stalking, Arson, Kidnapping, QA, etc)



Total Cases Assigned: 278

Total Cases Cleared: 167

Clearance Rate: 60%

Training

Detectives attended the following classes during 1997:

Advanced Sex and Violent Crimes Investigators Seminar - Everett, WA

Sexual Crimes Investigators Schools - Miami, FL

Risk Assessment of the Sexual Offender - Bellevue, WA

Homicide Seminar - Vancouver, BC

168 hours of outside training. Plus attendance at department in-service training.

Juvenile Assault Unit Mission

To investigate violent crimes committed against juveniles in the City of Bellevue.

Organization of Juvenile Assault Unit

The Juvenile Assault Unit consists of two detectives who report to the Persons Crimes supervisor. These detectives primarily investigate sexual assault cases against children and runaway youth reports. They also assist Persons Unit detectives with some person's crimes investigations.

In addition to their investigative responsibilities, Juvenile Assault detective's liaison with numerous governmental and private agencies involved with assisting juvenile victims and juveniles in crisis, and the King County Juvenile Court.

Significant Organizational Changes in the Juvenile Assault Unit 1997

- July: Detective Molly McBride who had been assigned as a Juvenile Assault detective since 1989, requested transfer to patrol which was granted and she left the unit in July.
- August: Detective John McBride was transferred from the Property Crimes Unit to replace Det, Molly McBride in the Juvenile Assault Unit.

Significant Investigations 1997

- A young male was abducted by his father during a visitation. The mother, who did not know this was a crime for two years, reported the crime to Detective Constantine. Detective Constantine tracked the father and son through the states of Nebraska, Arizona and other regions of the southwest and finally located them in Oregon. Oregon State Police arrested the father and returned the son to the mother. This all occurred within two weeks of Detective Constantine receiving the report.
- Detective Constantine talked to a woman who had concerns about her three year old daughter possibly being molested by her grandfather. The investigation found no molestation. However, from talking with people during the investigation, Detective Constantine became suspicious of the suspect and pressed further. He was able to determine that the suspect was a long-time child molester, over 20 years, of his own daughters and nieces. He found that the suspect started molesting these children from about the time they turned 10 years old. Jim built good enough cases on three specific episodes and obtained a conviction for all three. The suspect who is in his 60's faces 5-7 years in prison.

- Detective Constantine received a report of a three year old boy who had a broken leg and the circumstances of the injury were suspicious. He investigated and obtained a confession from the boys' stepfather that he inflicted the injury when he got angry with the child and slugged him on the leg with his fist. Convicted and sentencing pending.

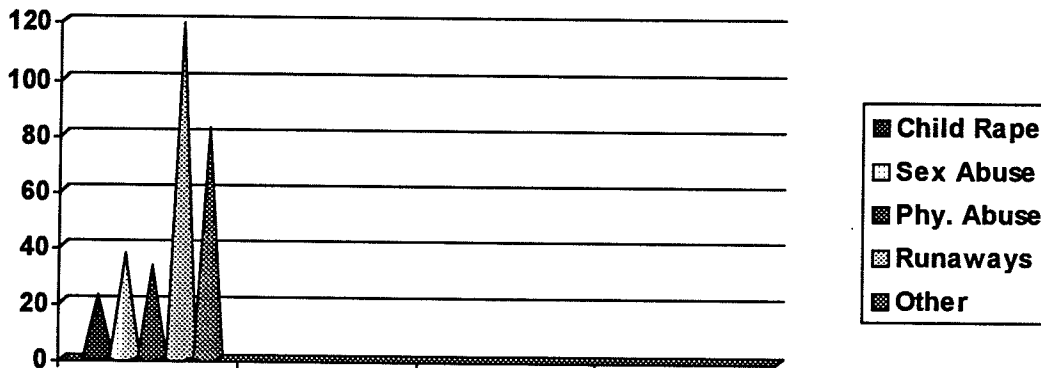
Juvenile Assault Unit Statistics by Detective 1997

	<u>Case Assigned</u>	<u>Cases Cleared</u>	<u>% Cleared</u>
Detective Jim Constantine:	183	104	57%
Detective Molly McBride:	42	32	76%
Detective John McBride:	68	58	85%

Total Juvenile Assault Unit Statistics 1997

Types of Cases Assigned:

Rape of a Child	22
Child Abuse - Sexual	37
Child Abuse - Physical	33
Runaways	119
Other	82



Total Cases Assigned:	293
Total Cases Cleared:	194
Clearance Rate:	66%

Training

Detective Constantine attended 89 hours of training:

Blood Borne Pathogens

1st Aid

Juvenile Justice

Weapons conversion to 10 mm

Risk Assessment for Sex Offenders

Violent Crimes Investigative Seminars

He also instructed classes at the Citizens Academy, child Abuse issues and mandatory reporting for the SRO's, and daycare providers, medical and allied health provider students at the community college and voc/tech facilities in the area.

Bellevue Police Department Investigations Section

Detective Lieutenant
Ed Mott
White Collar Crimes

Fraud
Investigations

Detective Mike Cate
Detective Gary Forrest
Detective Bob Herst

Crime
Analysis

Detective Greg Bean

Detective
Frank Nunnelee

Technician Lynne Zirkle

Citizen Volunteers:
Larry and Gail Linde,
Ed Whatley, Irina Lizunova

White Collar Crime Unit

The White Collar Crimes Unit serves the Bellevue Community through the prevention, investigation and prosecution of financial crimes. The unit consists of three full-time detectives and a supervising lieutenant. The unit is responsible for all primary and secondary investigations involving forgery, fraud, extortion, embezzlement, bank check and credit card forgeries, insurance frauds, computer related crimes and counterfeiting of credit cards and checks.

Check fraud is accelerated at an every increasing rate. Bank Automation News estimates that annual losses in the U.S. are beyond \$10 billion annually with banks and large corporations taking the brunt of the losses.

The significance of the problem is amplified when compared to losses due to bank robberies. The FBI reported 7,511 robberies in 1994 with losses of nearly \$68,000.00 a mere 0.5% of check fraud losses.

More than 1.2 million worthless checks enter the banking system each day. The number of cases involving fraudulent checks of \$100,000 and higher has increased 300% from 1990 to 1994.

Counterfeiting corporate checks is as old as checks themselves. The difference between today's counterfeiters and those of 25 years ago is the readily available technology that virtually anyone can use to alter, forge, or replicate authentic checks. Counterfeits include payroll, accounts payable and cashier's checks, money orders and even gift certificates.

Polygraph examinations were performed by detectives working out of the White Collar Crimes Unit as well as Major crime scene photography. One detective responded to over 20 serious crime scenes which require detailed documenting photographs. The polygraph examiner conducted over 30 tests (both criminal and pre-employment) during 1997.

The Web Page that was started in 1996 continued to flourish. A detective from White Collar Crime Unit on an on-going basis updated the Web Page with crime alerts and posting information on Level II and Level III Registered Sex Offenders who live in the City of Bellevue.

White Collar Crime Unit: Goals and Objectives

- Maintain the high quality of service provided to the Bellevue community, to individual and businesses, both large and small.
- With the assistance of the Community Services Unit aimed at the prevention of economic crime.
- With the growing immigration/refugee population educating their specific needs, both individuals and business owners.

- Steering the Economic Crime Task Force to work in a more Task Force mode working and sharing more information among each department faster.
- Continue to promote strong working relationships with the private sector, through groups such as the Downtown Business Association, who have a common interest in combating financial crimes.
- Continue more patrol roll-call training geared at the effective initial investigation of white collar crimes.

1997 Investigations Reflect the Diverse Nature of White Collar Crimes

A professional criminal with a long history of assuming other identity wrote thousands of dollars in checks in the Bellevue area over the July 4th weekend. Suspect was arrested in Oregon by the U.S. Marshall's office. Bellevue White Collar Crime Detectives went to Oregon and conducted a search for stolen property in a storage locker and returned with thousands of dollars of newly purchased items from computers to building equipment. Secret Service is handling this suspect due to numerous other states he has targeted.

A long-time Eastside burglar was arrested and charged with passing counterfeit checks. He was caught by a program BPD asked local area banks to try. This program was asking banks to have customers cashing checks to get a thumb print of the person passing the check. Check came back to the bank as counterfeit. An AFIS entry on the print revealed the suspects real name.

A local auto tire dealer was victimized by an embezzlement of an employee. The employee took cash from the register and replaced it with checks he had written in the customer's names. The checks were returned unpaid. Of the six customers who paid cash all confirmed their dealing with the business was not by check. Total loss to the local tire dealer was \$3,073.82. Suspect charged and convicted. Restitution was ordered to be paid to the Bellevue business.

A Bellevue Car Rental Agency leases a vehicle to a subject identified as a long-time con artist. Suspect lives in the Federal Way area. Suspect after taking possession of the vehicle valued at over \$80,000.00 loans the vehicle to an employee (currently on work release) and that he never gave the employee a date to return it. Statements were obtained that dispute this loaning of the vehicle to this now unknown employees location. Information developed during this case revealed that the office of the King County Prosecutor located in Bellevue was used for a conversion with a subject in Canada about the investing of money to distribute cocaine. The money invested would be returned to the parties involved in a set period with a definite set rate of return. This particular piece of information was promptly forwarded to the Multi-Agency Narcotics Task Force. The case was worked by White Collar detectives and the suspect was charged and convicted of theft in the first degree. This suspect also was found guilty of over 200 counts of theft first degree, theft second degree, and forgery from a 1996 Bellevue case. Suspect is now facing 33-40 months on these

charges. The fate of the missing automobile leased by the suspect is that it was converted by a drug dealer when the suspect fell behind in his payments for controlled substances.

A local doctor reported that his officer manager of nine and a half years had attempted to cash on of his checks for \$1,800.00 in a Spokane area credit union. Bellevue White Collar detectives step in and conduct an audit and investigation. The office manager admits to stealing \$62,000.00 in the year 1997. In the previous eight years she embezzled approximately \$50,000.00. Suspect charged and waiting for trial.

A local golf supply company sustained a \$3,000.00 loss when a female acting under an alias goes to the store and purchases a large quantity of golf clubs. The purchase is made with a counterfeit Visa card under a bogus name. Investigators identify a suspect and make up a photo montage. The suspect is picked by the witnesses in this case. Investigators arrive at her home to find she has moved with all her belongings and is at large. Investigators learn that the source for the suspects credit cards is her long-time boyfriend. He gets the counterfeit credit cards and counterfeit California driver's licenses from the L.A. area. We along with the LAPPED and Secret Service are still attempting to locate and arrest the two. This criminal organization spans a minimum of fifteen states and Mexico.

White Collar Crime Unit Statistics

<u>Description</u>	<u>1995</u>	<u>1996</u>	<u>1997</u>
1. Total Cases Assigned	435	396	353
2. Total Cases Cleared	342	288	63
3. Percentage Cleared	78%	72%	57%

(Note: The above clearance total includes those cases cleared by arrest, restitution, or other civil remedies where a suspect has been identified.)

<u>Description</u>	<u>1995</u>	<u>1996</u>	<u>1997</u>
1. Total Cases Assigned	435	396	353
2. Total Cases Cleared by Arrest/Filing	138	96	353
3. Percentage Cleared by Arrest/Filing	31%	24%	353

(Note: Nationally, the average clearance rate %, to include all crimes (1995), was 21%; nationally, the overall clearance for all property crimes was 18%. Source: FBI Uniform Crime Report, 1995.)

1997 Investigations Section Annual Report

Description	1995	1996	1997
1. Property Stolen, \$ Am.	\$1,884,800	\$1,076,269	\$1,196,238
2. Property Stolen, Recovered \$ Am.	\$346,794	\$294,177	\$283,528
3. Percentage Recovered	18.5%	27.0%	24.0%

(Note: Excluding motor vehicle recoveries, the national % for value of property stolen and recovered was approximately 8% for 1995. (Source: FBI Uniform Crime Report, 1995.)

Description	1995	1996	1997
1. Number of Cases Assigned	435	396	353
1. Number of Detectives	4	4	3
3. Average # Cases/D.t.	109	99	118

White Collar Crime Statistics: Cases Assigned by Offense Type

Forgery (Felony):	64
U.I.B.C. (Felony):	69
U.I.B.C. (Misdemeanor):	77
Theft (Misdemeanor):	83
Forgery (Credit Card):	28
Theft (Felony):	9
Embezzlement (Business):	8
Embezzlement (Individual):	2
Forgery (Check):	3
Assist Agency:	0
P.S.P. (Felony):	0
Possession Child Pornography:	0
Assault:	0
Residential Burglary:	1
M.V. Theft:	1
Bunco:	2
Questionable Action:	7
Commission of Burglary	1
Assigned Total:	353

As the above figures indicate, the detectives in the White Collar Crimes Unit investigate a wide variety of criminal offenses. Cases that begin as "financial crimes" can lead into other areas of criminal activity, such as motor vehicle theft and residential burglary. The expertise of the W.C.C.U. detectives in locating individuals, confirming true identity, tracking both physical and "paper" trails, obtaining confidential records (financial history, phone records, employment history) is a great asset to the Persons and Property detectives in solving their investigations.

Communication and Education Achievements Demonstrate Community-Oriented Policing

As long as the profits are high, the risks low and the opportunities almost limitless, white collar crime will continue to flourish. And with new opportunities for fraud criminals being created almost daily, a key ingredient in the fight against financial crimes must be the proactive approach of prevention - predicting activities before they occur. This can be achieved only through the sharing of information and strategies between law enforcement, financial institutions, insurance companies, retail businesses, and private citizens. Detectives in the White Collar Crimes Unit emphasized this role through active, ongoing participation in the following organizations:

- The Northwest Fraud Investigators Association
- The Pacific Northwest License, Tax and Fraud Association
- WLE Economic Crime Task Force/Check Fraud Committee
- The National Association of Bunco Investigators
- Association of Certified Fraud Examiners
- Puget Sound Investigators Association
- Professionals Against Confidence Crime
- The International Association of Computer Investigative Specialists
- Electronic crime Information Resource Group
- International Association of Credit Card Investigators
- National White Collar Crime Unit Association
- American Polygraph Association
- Northwest Polygraph Examiners Association

Financial fraud is a crime that continues to evolve and change at a rapid pace. Economic crime is borderless. Specialized training is mandatory to keep abreast of what is happening, not only locally, but internationally. Detectives from the White Collar Crimes Unit attended the following seminars and conferences:

- The 8th Annual Fraud Examiners Conference
- The N.W. Fraud Investigator's Association Fall Conference
- The 4th Annual Insurance Fraud Training Conference
- Gypsy Culture, Crimes and Investigations Training
- Washington State Cellular Fraud Fair
- Russian Organized Crime Seminar

- Northwest Polygraph Examiners Association Summer Seminar

White collar crime awareness prevention training presentations were made to the following groups and organizations:

- The Bellevue Police Citizen's Academy
- Bellevue Police Department Spring In-Service Training
- Factoria Mall Business Owners/Managers (two sessions)
- Bellevue Square Business Owners/Managers

White Collar Crime Unit training bulletins, distributed department-wide, covered the following topics:

- True Person Fraud
- Telemarketing Fraud/Scams
- Pyramid Scheme Fraud
- Nigerian Advance Fee Fraud
- Credit Cards and the Internet

1997 CAU Annual Report

Mission

The Mission of the Crime Analysis Unit is to advance the effectiveness and efficiency of Police Department operations and services by acting as centralized yet comprehensive criminal intelligence resource base. This is accomplished through the collection, analysis and dissemination of information, with not only local but also national impact.

Unit Structure and Responsibilities Continue to Grow and Evolve

The Crime Analysis Unit was put into operation in the early 1980's to help meet the criminal intelligence needs of the Department. It was comprised of one detective and one civilian. However, since the CAU was formed, both the Department and the City have grown tremendously. The number of crimes, the types of crimes and criminals, and the tools and strategies for combating crime, have placed new and ever-changing needs and demands upon the Police Department. The amount of information trickling through the Crime Analysis Unit at its inception has now become a torrent. To help with the ever-increasing volume of information, a second detective was added to the unit toward the end of 1996. 1997 was the first full year for the new three-person unit.

Volume of Incoming Information: Every year the CAU receives and reviews nearly 18,000 case reports, 3,500 field information reports, and thousands of teletypes, outside agency crime bulletins and miscellaneous information from various sources (crime analysis and intelligence meetings, law enforcement contacts, citizen tips, unclassified media etc.). The total is an overwhelming amount of information—a daily average of over 375 pages. For the Crime Analyst, it is roughly the equivalent of reading a novel a day.

Value of Crime Analysis Information: Police departments around the country are striving to do their work more intelligently, to “do more with less.” A key part of this equation is providing police officers, detectives and administrators with quality information which will enable them to complete their specific assignments more effectively and efficiently. Crime Analysis is providing solutions.

The Range of Duties is Extensive. With the basic mission always in mind, the Crime Analysis Unit consistently performed the following functions in 1997:

- Review all incoming crime reports, FIRs and outside agency bulletins, interpret the information and forward it to the appropriate unit/personnel.
- Track and analyze current crime trends and series crimes (robberies, burglaries etc.). Organize the information and disseminate to the appropriate division/commanders.

1997 Investigations Section Annual Report

- Daily debrief of 4th watch supervisors, relay case/incident details to the Investigations Command Staff, thus ensuring timeliness and investigative continuity.
- Collect criminal data and suspect photographs for the Crime Analysis Bulletin. Organize, analyze and write the material for the bulletin; distribute to all sections of BPD and other regional law enforcement agencies.
- Track Registered Sex Offenders living in Bellevue and prepare cases on RSO's who fail to register/abide by the registration requirements. Although Registered Sex Offenders are a very mobile group, the number of RSO's in Bellevue at any one time during the past year averaged about 70.
- Identify "high risk" Registered Sex Offenders. Prepare, publish and distribute community notifications on same.
- Gather information for officers and detectives via computer services not accessible to them (e.g. nationwide name searches, social security number information, newspaper databases etc.).
- Create computer generated photo line-ups for officers and detectives when traditional means are either impossible or difficult.
- Provide BPD commanders, detectives and officers with diverse categories of specialized information relating to offense types, districts and frequency of occurrence.
- Coordinate information flow between BPD and other law enforcement agencies.
- Communicate regularly with probation/parole to monitor activity of released offenders residing in Bellevue.
- Respond to inquiries from citizens, businesses, civic groups and the media regarding crime rates, high profile offenders and incidents.

The Crime Analysis Technician: In addition to the two detectives assigned to the Crime Analysis Unit, a civilian Crime Analysis Technician is charged with a myriad of responsibilities. When police administrators, commanders, supervisors or officers need the data upon which to calculate personnel needs, deployment, resources and strategies, the information will come from the Crime Analysis Technician. The duties include:

- Provide statistical analysis of current topics of concern which impact the City.

1997 Investigations Section Annual Report

- Provide the Chief of Police with the studies of issues requested by the City Manager and the City Council. The immediacy and accuracy of these reports is crucial to ensure that the Police Administration responds promptly to the information needs of the City.
- Provide data necessary for Department Commanders to prepare their yearly budget requests.
- Create and enter crime data programs.
- Prepare all statistical reports as required by State and Federal law, including Part One Crime Reporting, Hate Crimes, Domestic Violence, Assaults on Officers, Homicides and Arson.
- Retrieve statistical information for Police Administrative planning.
- Retrieve statistical information for Police Operations and Special Assignments projects.
- Audit RMS data entered by Records personnel. Maintain the integrity and accuracy of system by evaluating and helping to resolve data entry procedures.
- Provide appropriate offender, district, and offense data to Police Information Officer for subsequent release to the media.
- Provide the Crime Prevention Unit with information and statistics necessary to schedule and promote block watches and commercial crime prevention presentations.
- Build customized computer programs to capture statistics as requested by the Chief of Police, the City Manager and the City Council; as well as customized programs that assist in the Internal Investigations process.
- Train incoming commissioned personnel on Department computer functions and use.
- Train new detectives on the specifics of Investigations Section computer applications.
- Perform scribe responsibilities for detectives at major crime scenes.
- Monitor and schedule one relief person and two volunteers involved in Investigations clerical work.

Crime Analysis Unit Accomplishments Produce Department-Wide Benefits

The work of the Crime Analysis Unit goes far beyond number counting. In 1997 C.A.U. assisted with major crime incidents and other important investigative activities. These included:

- The CAU tracked all Registered Sex Offenders in the City of Bellevue. They assessed a half dozen high-risk sex offenders; prepared notifications, and coordinated with Command Staff, Department of Corrections, CSU and Patrol for the issuance of those notifications and public meetings. Notifications included three level III notifications—Charles Pine, Robert Dehaan, and James Carver, and three level II offenders, Donald Parker, Tracy Santana, and Randolph Ross.
 - Registered Sex Offender tracking included registered mailings every six months, coordinating with Patrol to locate RSOs who failed to respond to the mailing, and the preparation of charges against those not complying with the Registered Sex Offender Laws.
- The unit successfully applied for and received membership in the Law Enforcement Intelligence Unit, a well-respected national criminal intelligence cooperative. This membership provides BPD with ready contacts in thousands of agencies across the nation and should greatly improve our ability to share information with law enforcement sources.
- One unit member was assigned to, and successfully obtained the requisite top secret security clearance to join the Federal Domestic Terrorism Taskforce.
- During the investigation of the Factoria homicide, member of the CAU processed evidence at the scene, prepared informational bulletins with surveillance photographs of the suspects, and assisted the arrest teams.
- The CAU assisted Kirkland PD and the BPD Property Crimes Unit with a computer theft/fencing case. CAU members assisted with the warrant service and with the forensic examination of computers found on the premises.
- The unit assisted Federal agencies with several successful deportation cases involving subjects with Russian Organized Crime connections. The CAU played a prominent role in tracking and documenting their activities.
- All three unit members assisted extensively with the Wilson quadruple homicide—crime scene processing (two full days), canvassing the neighborhood, creating informational bulletins, creating a relational database and processing the information, producing a computer timeline of the crime.

- The Unit assisted in numerous other major crimes investigations by searching for and obtaining outside source information, providing computer generated photomontages and developing suspect leads through MO analysis.
- The D'Original Jewelry robbery was an excellent example of the kind of assistance provided by the CAU. With only a description of the two male suspects, and a license plate from the getaway car (which was registered to a woman), the CAU was able to locate the names and photographs of two likely suspects. One of those suspects was soon identified by the victim. This was also another crime scene where CAU members assisted with evidence processing.
- Members of the CAU also assisted with the Donald Case homicide by doing evidence searches and assisting the arrest team.
- By tracking Russian/Eurasian individuals involved various crimes, the CAU was able to identify and link several organized groups of criminals. This information led to, or assisted with, numerous investigations, both local, state and federal.

The Volume of Intelligence Generated by Crime Analysis is Far-Reaching. The modern criminal is extremely mobile. The crime reports, bulletins, photomontages and training materials produced by the CAU are shared with other law enforcement agencies. In 1996 this intelligence included:

- 50 full length Crime Analysis Bulletins
- 25 special bulletins
- 50+ computer generated photo montages
- Attendance at numerous local detective and intelligence meetings for the purpose of exchanging information on crimes and suspects.
- Maintenance and operation of 300 computer programs custom built to meet the demands of Bellevue's public and private sectors.

Training Presentations Were Made to the Following Groups:

- The Bellevue Citizens Academy (3 sessions)
- Bellevue Police Department In-Service Training
- New hire police personnel (entry and lateral) training
- The Portland Police Bureau
- WA Juvenile Probation Officers Association
- Washington State Criminal Justice Training Commission

Specialties - Russian/Eurasian Organized Crime:

The recent growth of the Russian/Eastern European Community in Bellevue has been great a cultural benefit for the City. And the vast majority of these new arrivals are, and will continue to be, valuable additions to Bellevue. However, among these recent arrivals there exists a small but definite criminal element, a level of organized criminality never before experienced in our City. All available information indicates that this trend will continue. In response to this threat, the Crime Analysis Unit has been tasked with the following responsibilities:

- Organize and maintain criminal intelligence on Russian/Eurasian Organized Crime groups.
- Assist with, but not directly conduct, investigations of Russian/Eurasian crimes of all types.
- Establish and maintain contacts with federal, state and local law enforcement.
- Link analysis.
- Increase contacts with Russian/Eurasian community: individuals, groups and businesses.
- Prepare information for, and assist with briefing of, BPD Commanders on the Russian/ Eurasian Organized Crime problem.
- Track all reported R/E OC incidents.
- Identify, cultivate and meet with confidential informants.
- Recruit, train, manage and direct Russian/Eurasian volunteers to assist detectives/officers.
- Serve as liaison for R/E interpreters used in police investigations.

Russian/Eurasian Organized Crime; 1997 Crime Analysis Unit Accomplishments:

The first step in any organized crime group investigation is the gathering of intelligence. Identify the groups, the individuals, the crimes involved and links to other OC groups; know the enemy. The expertise of the C.A.U. detective assigned this responsibility, led to several invitations to conduct training for other law enforcement agencies. He co-taught, with the FBI, the Russian/ Eurasian Organized Crime Course at the Washington State Criminal Justice Training Center (2 sessions), and a similar course for the Portland Police Bureau. He served as a guest speaker on Russian/Eurasian OC at the Washington State Juvenile Probation In-Service Training Conference held in Silverdale. In addition, "in-house" training was given to the BPD Section Commanders.

Looking Toward the Future...Goals For the Crime Analysis Unit

The CAU, while facing the same staffing and budgetary restraints as all sections, will continue to strive to be a "full-service" crime analysis unit; to provide extensive support services to, not only the Police Department, but to the entire City.

Tactical Applications. The identification of specific and immediate crime problems, suspects etc. Information used to promote a quick response to field situations.

Strategic Applications. Analysis and prediction of long-range crime problems and trends.

Administrative Applications. Analysis of economic, geographic or social information affecting local law enforcement.

In 1997, the CAU will emphasize the acquisition and use of additional information/intelligence sources. The unit is already investigating on-line services capable of providing information on solved and unsolved rape and murder cases, all Washington State criminal intelligence bulletins, gang information, including California files, local vice files, DOL files with the ability to search by partial plate, color and location, OC figures, California criminal information, credit reports, business information, Social Security information, asset tracking, civil/tax/appellate court records, UCC filings, corporations/business/officers, bankruptcies, tax liens, real property, professional licensing, Washington State Superior, District and Municipal Court records etc.

The end product will be that the Crime Analysis Unit will provide the Administration, supervisors, detectives and line officers with exactly the type of information needed to work effectively and efficiently at all levels, in the present and in the future.

Bellevue Police Department
Investigations Division

Detective Lieutenant
Jim Gasperetti - Property Crimes

Property Crimes
Investigations

Detective John Jesson

Detective Tom Wray

Detective Carlos Preciado

Detective Chuck Vance

Detective Steve Lynch

Detective John Mayfield

PROPERTY CRIMES UNIT

Mission

To protect the property interests of the Bellevue Community through the investigation of crimes against property and the prosecution of those responsible for those crimes.

Organization of the Property Crimes Unit

Through most of 1997 the Property Crimes Unit consisted of one lieutenant and five detectives due to one unfilled property detective position. However late in 1997 this position was filled and, as of January, 1997, the Unit is back to full strength with six detectives.

Every property crimes detective is assigned to investigate a wide variety of cases. The types of cases will range from residential and commercial burglaries, to vandalism and thefts, including automobile thefts. Detectives within the unit have received specialized training in the investigation these cases, as well as in arson investigation. One detective is also assigned to monitor the ever increasing business at Bellevue's pawn shops and second-hand stores.

Department-Wide Responsibilities

Due to their job knowledge and specialized skills, Property Crime detectives provide valuable services to units throughout the Police Department. When a major crime such as a homicide, rape or armed robbery occurs, these detectives will assist the Persons Unit in the collection of evidence, the preparation and service of search warrants and the interviewing of suspects and witnesses. Officers from the Patrol Section will turn to Property Unit detectives for technical investigative expertise. In addition, a detective from the Property Unit has the overall responsibilities for the Department's crime scene video equipment and surveillance cameras.

New Case Management System Results in More Effective Investigations

In order to perform to its optimum capabilities and thereby serve the best interests of the community, the Property Crimes Unit (along with Persons and White Collar Crimes) began working under a new, more efficient case management system. This included defined workload measures and a determination of the distribution and assignment of cases. The system allowed Property Crimes Unit detectives to concentrate on those cases which could be productively investigated. The result: a 21% clearance rate increase over 1996 and a 13% increase in cases closed with arrest/filing. (See 1997 Statistics)

1997 Property Crimes Unit Highlights

- Burglaries during which firearms are stolen are made a priority by Property Unit detectives. In early 1997 six handguns and a large quantity of jewelry were stolen from a Bellevue residence. An informant's tip along with a latent fingerprint match led to the identities of two subjects. A search warrant was served. All six guns and a majority of the jewelry was recovered. Two subjects with long ties to street gangs were arrested.
- Firearms in the hands of juveniles are an especially deadly combination. Three handguns were stolen from a home by juveniles "partying" while the parents were away. The assigned Property Unit detective put all other cases on hold. Seven arrests were made, confessions documented and two of the handguns were recovered.
- Domestic violence extends beyond the crime of assault. The victim in this 1997 case came home to find her car stolen and her home ransacked. A Property Crimes Unit detective learned that the victim's ex-boyfriend had conspired with two subjects to terrorize this woman. This successful investigation resulted in three arrests. The ex-boyfriend was charged with: Domestic Violence/Burglary; Criminal Solicitation/Conspiracy; Criminal Attempt and Coercion.
- A Bellevue Property Unit detective took the lead in investigating a subject wanted by 14 law enforcement agencies for a string of forgeries and motor vehicle thefts. After coordinating a multi-agency surveillance, the subject was arrested. He subsequently confessed and several thousand dollars of stolen property was recovered.
- The apprehension of crooks committing property crimes frequently requires multi-agency response. Bellevue detectives worked closely with their Kirkland counterparts on a fencing operation in Seattle. The result: three search warrants served; three arrests made; approximately \$200,000 in stolen computer equipment recovered and a major criminal operation shut down.
- The monitoring of pawn shop activity is a valuable investigative avenue for detectives in the Property Crimes Unit. Taking a pro-active approach, detectives were able to recover numerous stolen items from not only Bellevue burglaries, but also from cities throughout the region. Numerous laptop computers, monitors, two fax machines, a VCR and a Rolex watch stolen in Colorado were among the items recovered.
- The pro-active approach was also successfully used in two cases involving the after hours theft of money from businesses. Setting out the bait of chemically treated cash, the suspects in both cases were arrested after being caught with the chemical dye on their hands.
- In 1997 a hotel "Gypsy" crime ring moved through the area trafficking in stolen cars, credit cards and checks. A multi-agency effort coordinated by a Bellevue Property detective resulted in several arrests and the recovery of stolen property.

- Motor vehicle thefts are a problem not only in Bellevue, but also nationwide. When patrol officers arrested one subject at a stolen car scene, a detective was able to pursue the investigation, resulting in four additional arrests. All five subjects lived outside of Bellevue; all five were found guilty. They admitted involvement in numerous other thefts.
- The Property Crimes Unit acquired the use of two "bait cars" from the N.I.C.B. and local insurance companies. These two cars have been parked and "staked out" in targeted locations. While this tactic is time and personnel intensive, success is hoped for in 1998.
- Property Crimes Unit detectives played an essential role in 1997 homicide investigations. These detectives assisted not only in processing the physical evidence at the crime scenes but also in following up on information tips, and witness and suspect interviews. In the Factoria Cinemas homicide investigation, a Property Unit detective conducted a crucial interview during which a suspect confessed and identified the "shooter".

Property Crime Investigations Extend Beyond Regional Borders

- The East-European crime problem continues to be a concern in Bellevue. Property Crimes Unit detectives, along with the Crimes Analysis Unit, keep close focus on those individuals who have determined to make crime their occupation in Bellevue. By working with I.N.S., detectives aim for the ultimate solution to this problem: deportation for the hard-core criminal.
- The militancy of the Animal Liberation Front, ("A.L.F") has been escalating nationwide, to include such terrorist activities as arson and bombings. Five Bellevue/Mercer Island residents have been involved in incidents both on the East and West coasts. While the incidents locally have not reached this degree of violence, Bellevue detectives will continue to work with both local and Federal law enforcement to monitor the criminal activities of this group.

Training Attended

- Domestic Violence Crime Scene Photography; Civil Liability and Law Enforcement
- Investigating Fraud Cases
- Video Surveillance Techniques for Law Enforcement
- Safe and Burglary Investigators Conference
- Domestic Terrorism Seminar

Property Crimes Unit Statistics 1997

1997 Investigations Section Annual Report

<u>Description</u>	<u>1996</u>	<u>1997</u>
Total Cases Assigned	648	343
Total Cases Cleared	167	161
Percentage Cleared	26%	47% (21% Clearance Increase)

(Note: The above clearance total includes: cleared arrest/filed; cleared exceptional; cleared other; cleared juvenile; cleared unfounded.)

Total Cases Assigned	648	343
Total Cases Cleared Arrest/Filed	41	59
Percentage Cleared Arrest/Filed	24%	37% (13% Arrest/Filed Increase)

(Note: The national overall clearance for all property crimes was 18%; Source FBI Uniform Crime Report, 1995)

Value of Property Stolen	\$6,191,137	\$7,917,863
Value of Property Recovered	\$2,336,910	\$3,340,739
Percentage Recovered (by value)	37%	42%
Number of Cases Assigned	648	343
Number of Detectives	5	5
Avg. # of Cases	130	69

Cases Assigned by Offense Type

Robbery	1
Assault	1
Harrassment	3
Missing Person	2
Questionable Action	2
Narcotics	1
Arson w/injury	3
Arson wo/injury	2
Malicious Mischief	1
Forgery	3
PSP (F)	10
Theft (M)	43
Theft (F)	70
Theft MV	66
Commercial Burglary	74
Residential Burglary	87