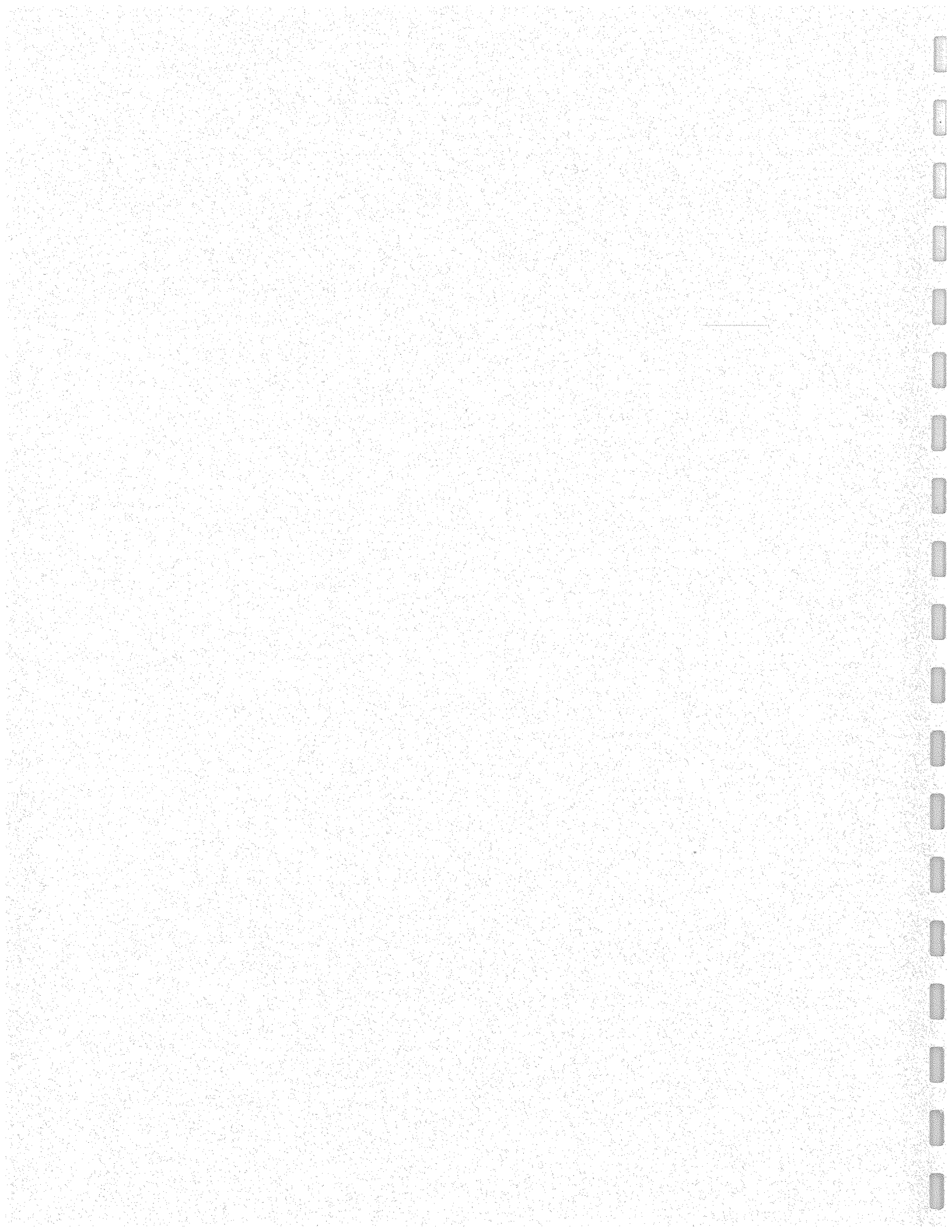


Community Services Section 1998 Annual Report

“Providing a Safe Environment in
Partnership with the Community”



James Montgomery
Chief of Police



1998 COMMUNITY SERVICES SECTION ANNUAL REPORT

TABLE OF CONTENTS

INTRODUCTION	4
Community Services Section Organization Chart.....	5
Structure and Purpose.....	6
NEIGHBORHOOD SERVICE UNIT.....	8
Community Action Team	8
Community Station.....	9
Crossroads.....	9
Factoria	10
Spiritwood.....	11
Headquarters Officer	13
Crime Protection.....	13
Police Park Patrol	15
SCHOOL SERVICES UNIT	16
D.A.R.E. & G.R.E.A.T. Programs	16
Bellevue High School	17
Interlake High School	18
Newport High School	18
Robinswood High School	19
Sammamish High School.....	20

1998 COMMUNITY SERVICES SECTION ANNUAL REPORT

TABLE OF CONTENTS continued

FAMILY SERVICES UNIT21

 Domestic Violence21

 Juvenile Investigations.....23

 Gang Statistics23

VOLUNTEERS26

PROMOTIONS AND TRANSFERS.....27

LOOKING TOWARD THE FUTURE28

ATTACHMENTS.....29

“By respecting difference in individuals and neighborhoods we grow in understanding ourselves the view of others and the needs of the community and the organization.”

1998 COMMUNITY SERVICES SECTION ANNUAL REPORT

"We Work with the Community."

INTRODUCTION

This report is intended to provide the reader with a comprehensive review of the Community Services Section for the year, 1998. The report is presented in the following sections:

- **Neighborhood Services Unit**
- **Family Services Unit**
- **School Services Unit**

The Community Services Section is a newly formed work group within the Police Department. It has been in existence as a Section since July 1, 1998. Previous to this date, Community Services consisted largely of the work group now known as the Community Services Unit, which was assigned to the Patrol Section and was previous headed by a Police Captain.

The Community Services Section consists of 30 commissioned personnel, a part time assistant at the Spiritwood Manor sub-station and one part-time clerk. The extensive use of civilian volunteers is also used throughout the Section. The Section is lead by a Police Major, with a Police Lieutenant supervising each of the three separate Units that are within the Section.

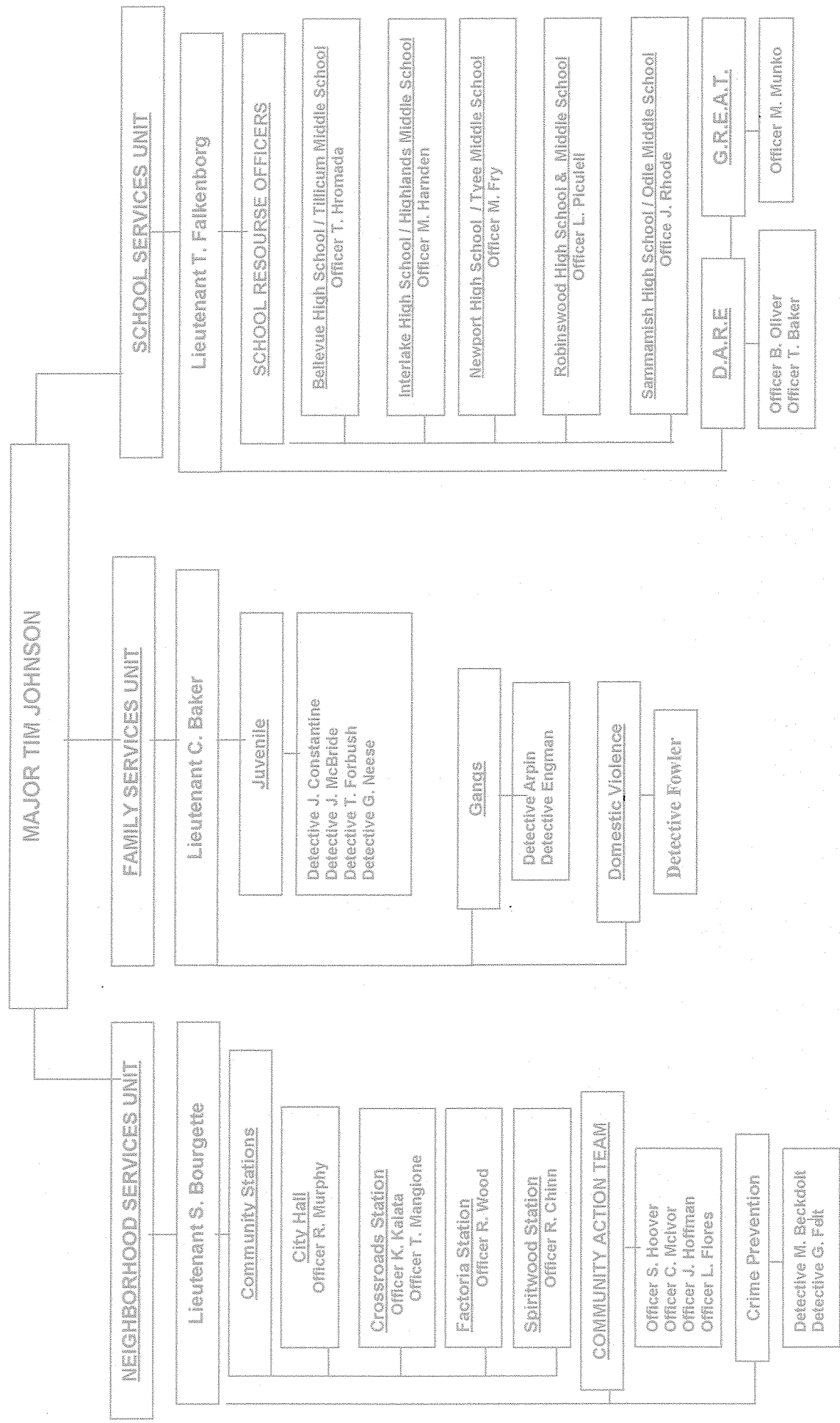
There are three components to the Community Services Section:

Neighborhood Services: The personnel assigned to Neighborhood Services include officers assigned to the three neighborhood sub-stations at Crossroads, Factoria and Spiritwood Manor; a Headquarters Officer assigned to the main police facility, two Crime Prevention Detectives, and four Community Action Team officers assigned to police bicycle teams. During summer months, the Bellevue Park Patrol also operates out of the Neighborhood Services Unit.

Family Services: Personnel assigned to Family Services include detectives assigned to gang enforcement and intervention; juvenile detectives who focus on juveniles as suspects in crimes; juvenile detectives who focus on juveniles as victims of physical or sexual abuse; and a detective who focus's on domestic violence.

School Services: Personnel assigned to School Services include: five School Resource Officers (SRO) which are assigned to one of High schools within the Bellevue School District; two D.A.R.E. Officers who teach and interact with children in the school district's elementary schools; one G.R.E.A.T. Officer who teaches Gang Resistance Education and Training and also acts as a roving SRO in the districts middle schools.

COMMUNITY SERVICES SECTION ORGANIZATIONAL CHART



1998 COMMUNITY SERVICES SECTION ANNUAL REPORT

“We want to do things that serve the best interest of all the people in Bellevue.”

COMMUNITY SERVICES SECTION

Structure and Purpose

Juvenile crime remains among the top concerns of citizens. Government and citizens working alone cannot meet all the challenges facing communities in preventing and reducing juvenile crime. Programs that emphasize community oriented justice and partnerships of police, citizens, businesses, civic and religious organizations, counties, cities, social service, courts and youth serving agencies can promote and maintain safe and healthy neighborhoods and communities.

Approaches such as community policing, community-oriented justice, and collaborative efforts between police, social services, mental and human services that promote and support strategies to address and reduce the fear of juvenile crime through problem solving tactics and partnerships are needed. Police departments and human service agencies need to collaborate and adopt initiatives for service integration with families and children at high risk of such negative developments as child abuse, school dropout, substance abuse and delinquency. Service integration should include coordinated case management, improving the flow of information between agencies, making service more accessible to clients and involving communities in solving their own problems.

In July, 1998, the Bellevue Police Department underwent a re-structuring of its Operations Division which combined Police Traffic under the Patrol Section and created the Community Services into a stand alone section. This re-structure centralized police services to better serve neighborhoods, schools, families and youth. The goals for the Community Services Section are:

- Reduction in teen violence.
- Coordination of police services for neighborhoods, schools, families and youth.
- Strengthen current and develop new partnerships between police, schools, social/non-profit/criminal justice agencies.
- Increase developmental assets in the community.
- Reduce the number of times families are involved with the police on criminal matters.
- Track linkages of services to families (Family violence, leading to runaway, leading to truancy).
- Focus department/community resources on the most active and violent offenders.
- Increase department efforts with victim assistance and advocacy.

1998 COMMUNITY SERVICES SECTION ANNUAL REPORT

"We cooperate to achieve common goals"

The Community Services Section completed its first six months of operation in 1998. The Section consists of thirty commissioned personnel, supervised by three Lieutenants and commanded by a Major.

The Community Services Section, commanded by a Major, currently consists of:

The Neighborhood Services Unit (NSU)

One Lieutenant who supervises:

- Four Bicycle Officers who comprise our Community Action Team (a proactive neighborhood problem solving team)
- One Residential Community Station Officer (a partnership with King County Housing Authority to police four low income apartment complexes)
- Three Community Station Officers working out of two Community Stations (Crossroads and Factoria)
- Two Crime Prevention Specialists who educate business and citizens on crime prevention techniques.
- One Headquarters Officer who takes telephone and walk-in criminal complaints.
- Six Summer Park Patrol Officers
- Numerous volunteers and part time employees who support the community stations and conduct surveys for the Department.
- The Department's Cadet Unit

The School Services Unit (SSU)

One Lieutenant who supervises:

- Two Drug Abuse Resistance Education (DARE) Officers who are assigned to the elementary schools.
- One Gang Resistance Education and Training (GREAT) Officer who is assigned to the middle schools.
- Five School Resource Officers (SRO) who are assigned to each of the high schools.

1998 COMMUNITY SERVICES SECTION ANNUAL REPORT

The Family Services Unit (FSU)

One Lieutenant who supervises:

- Two Juvenile Detectives who specialize in the investigation of physical and sexual abuse of juveniles.
- Two Juvenile Detectives who specialize in the investigation of crimes committed by juveniles.
- Two Gang Detectives who specialize in investigation and intervention in gangs and youth violence.
- One Detective who specializes in cases involving domestic violence.

NEIGHBORHOOD SERVICES UNIT

Community Action Team

CAT is a proactive unit consisting of four officers, whose mission is to identify and solve neighborhood and community crime problems. They also respond to requests from other units in the department to work special emphasis patrols. These officers are predominately on bicycles, which allows them the ability to patrol areas that are difficult to patrol by conventional means. Their speed and quietness allows them to successfully impact those street level crimes and problems that tend to tear at the fabric of a neighborhood. While they spend the majority of their time on bikes, they use other methods as necessary to solve problems. They are also involved in many community and civic groups. The team also is responsible for making presentations to all segments of the community, from toddlers to senior citizens.

On Duty Hours	5,724
Calls for Service	768
Crime Reports	269
Arrests	323
Officer Assists	248
Filed Interview Reports	166
Traffic Stops	1,615
Traffic Citations	193
Community Meeting/Presentations	112
Attendees to the Presentations	4,774
Volunteer Hours	2,173

1998 COMMUNITY SERVICES SECTION ANNUAL REPORT

Community Action Team Highlights for 1998 include:

- Officer Hoover started a bicycle registration and recovery program, to include obtaining a grant for a computer to support the program.
- Two of the more successful problem solving emphasis was taking back Crossroads and Hillarie parks from the gangs, allowing families to feel safe again while enjoying the parks.
- Officer Shovlin was promoted to Lieutenant.
- Officer Kaleta was asked to instruct officers from around the world at the International Police Mountain Bike Association annual meeting in Chicago.

Community Stations

The three (Crossroads/Factoria/Spiritwood) Community Stations, and the officers and volunteers assigned to them, work closely with the residents and businesses in their respective areas addressing mutual crime concerns and quality of life issues. They build trust between the Police Department and the public, encouraging partnership which enables problem solving between all the entities that have a vested interest in a given problem.

Crossroads Station

The Crossroads Station completed its third full year of operation in October. Two officers assisted by volunteer staff, man the station from 10 AM to 6 PM daily. During 1998, the following activities were recorded:

Station Visits	4,223
Telephone Calls Received	3,385
Officer Working Visits	3,059
Calls Handled by Station Officers	832
Crime Reports Taken by Station Officers	185
Arrests	84
FIR'S Completed	78
Trespass Warnings	113
Presentations	108
Presentation Attendees	982

1998 COMMUNITY SERVICES SECTION ANNUAL REPORT

Crossroad Station highlights for 1998 include:

- Officer Mangione developed a narcotics case in Crossroads that resulted in; the closure of a restaurant from which narcotics were being sold, the confiscation of narcotics, the arrest of a long time local dealer, the seizure of money (\$47,000) and vehicles.
- Crossroads officers organized and sponsored another National Night out in Crossroads.
- Another Crossroads Business survey was completed.
- Crossroads Officers organized and formed the Crossroads Apartment Connection.

Factoria Station

The Factoria Station is staffed with one officer and many volunteers.

During 1998, the following activities were recorded:

Station Visits	5,893
Telephone Calls Received	2,530
Officer Working Visits	1,737
Volunteer Hours Worked	2,307
Calls Handled by Station Officer	216
Crime Reports Taken by Station Officer	28
Arrests	18
FIRS Completed	22
Trespass Warnings	81
Presentations	145
Presentations Attendees	1,455

“We listen, anticipate and respond to the needs of our community and its elected representatives.”

1998 COMMUNITY SERVICES SECTION ANNUAL REPORT

Factoria highlights for 1998 include:

- Officer Wood coordinated the Factoria Child Safety Fair, attendance included approximately 1000. Officer Wood made significant upgrades to the district officer area of the Factoria Station, increasing the number of officer visits.
- He coordinated the city sponsored Halloween Party, over 2000 adults and children visited.
- Initiated training for all mall security officers.
- Factoria Community Station started two new programs for their community, which is managed by Officer Wood:

'Factoria Business Watch', this program promotes a positive working relationship between the Factoria Business Community, and the Police.

'Neighborhood Watch', this program promotes citizen involvement in the police department to combat persistent, reoccurring crime problems.

- Factoria Community Station, is continuing to develop the Crime Free Multi-Housing Program; He approved two apartment complexes for the program. Both complexes are experiencing a reduction in criminal activity and an improved relationship with the Bellevue Police Department.

“We test new ideas, take reasonable risks and seek adaptive solutions that respond to the needs of the community and the organization.”

1998 COMMUNITY SERVICES SECTION ANNUAL REPORT

Spiritwood Residential Community Station

The Spiritwood Station is staffed with, one officer and one part-time civilian assistant.

During 1998, the following activities were recorded:

Station Visits	434
Telephone calls Receive	463
Officer Working Visits	188
Volunteer Hours Worked	
Calls Handled by Station Officer	89
Crime Reports Taken by Station Office	18
Arrests	5
FIRS Completed	22
Trespass Warnings	-0-
Presentations	36
Presentations Attendees	794

Spiritwood Station highlights for 1998 include:

- Officer Chinn and his assistant Nora Trujillo were instrumental in starting a food bank at the Spiritwood Apt. Complex.
- In addition to his other duties Officer Chinn was asked to assist PSU in background investigations for new hires.
- Another successful, busy year with the summer sack lunch program with 5,000 lunches and snacks delivered to hungry youth in our community.
- Officer Chinn, and the whole department for that matter, were instrumental in helping the KCHA and the Bellevue Boys and Girls Club obtain a \$94,000 federal grant for another computer learning center, this one to be located in the Hidden Village apartments.
- Officer Chinn and his assistant, Aura Honkanen, continue to use the holiday season as a method to build positive relationships between the police and community. Over fifty meals were provided to needy families and over 250 gifts were given to local children by police officers.

1998 COMMUNITY SERVICES SECTION ANNUAL REPORT

Headquarters Station Officer

Officer Murphy is our Neighborhood Service Officer working out of the Police Records Section. Officer Murphy takes crime reports and answers questions from citizens who walk into the City Hall police department.

- He monitors the Computer Aided Dispatch calls for service.
- Takes complaints by telephone to speed reporting and eliminate the need for an officer to drive to the station to contact the complainant to take a report.
- Officer Murphy also assists Detectives, Traffic Officers, Prosecutors and Records personnel with many different tasks throughout each day.

Calls	1,112
Case Reports	481
Telephone Inquires	1,136
Follow-up Reports	129
Arrests	11
Patrol / Records Assist	581

Crime Prevention

The Crime Prevention Department has a staff of two officers. These officers organize Block Watch meetings and teach citizens on a variety of crime prevention subjects. Crime prevention officers also oversee the Police Cadet Program, False Alarm Reduction Program and Electronic Surveillance. (Agent Alarms) The activity for 1998 is as follows:

Agent Alarms:

Agent Alarms Installed	16
Arrest Made	2

1998 COMMUNITY SERVICES SECTION ANNUAL REPORT

Business Watch Program:

Contacts	9,342
Presentations	61
Meetings	37
Training Provided	51
Business Security Surveys	64

Neighborhood Watch Program:

Contacts	2,342
Block Watch Meetings	34
Personal Security Meetings	13
Security Surveys	21
Miscellaneous Meetings	63

Special Events:

Home Shows	500
Law Enforcement Day	3,212
Art & Crafts Fair	3,500
National Night Out	250
Totals	7,462

Crime Stoppers:

Staffing Office	7
Meetings	1
Radio Announcements	17

False Alarm Reduction Program:

False Alarm Reports for 1997	4,369
False Alarm Reports for 1998	3,876
Percentage of Change	-11.28%
False Alarm Classes	24
Fee Generated	\$81,625.00

1998 COMMUNITY SERVICES SECTION ANNUAL REPORT

Cadet Unit - Police Explorers:

Number of Active Cadets	6
Police Cadet Advisors	1
Cadet Volunteers Hours	1,339
Cadet Meetings	6
Major Cadet Events	2

Police Park Patrol

This summer time program completed its fifth year in 1998. The park patrol has a staff of six civilians, five park patrol officers (typically college students on summer break) and one supervisor. They patrol the parks between May 15th and Labor Day. They patrol on bicycle or on foot in uniform and are non-commissioned. They are used as a public relations and community education tool, not as an enforcement arm of the police department. They are responsible for patrolling the parks, interacting and assisting the citizens on uses and rules of our park system. They are also tasked with locking up the parks and their restrooms each night.

Activity highlights for the park patrol include:

Hours Worked	3,822
Park Visits	5,140
Park Lock Ups	2,572
Radio Dispatched Calls	59
Officer Assists	9
Case Reports	44

Breakdown of Park User contacts:

Goodwill Contacts	19,584
Public Assistance	87
In Park after Closing	1,395
Dogs Off Leash	330
Alcohol in Park	12
Skateboarding	28
Vehicles Tagged	73
Questionable Circumstances	10

1998 COMMUNITY SERVICES SECTION ANNUAL REPORT

SCHOOL SERVICES UNIT

D.A.R.E. & G.R.E.A.T. Programs

Two officers teach the DARE Program in elementary schools. One officer teaches the GREAT Program in the middle schools. All three officers attend other school functions, act as resources for the schools and work with children in the GREAT Summer Connection Program. During 1998, the following activities were recorded for these units:

D.A.R.E. Program	1998
Elementary School Classes	48
Middle School D.A.R.E. Classes	18
Program Graduates	1,271
Other Student Contacts	865 hrs.
Informal Presentations	19,230 People
Total D.A.R.E. Graduates	540 + 1271 = _____

'Other Student Contacts': These hours included interacting with the kids prior to school, recess/lunch, school assemblies, walkathons, dances, Skate King, etc.

'Informal Presentations': These are large crowds like Arts & Crafts Fairs, Parades, Summer Camps, Smaller fairs, such as Night Out Against Crime, Thanksgiving and Xmas functions.

G.R.E.A.T. Program	1998
Middle School Classes	28
Program Graduates	700
Summer G.R.E.A.T Connection	108 Children
Student Conferences	190

'Summer Great Connection': Each 'week-long camp, was over capacity with 55 campers. There were waiting lists for each of the 7 separate 'Summer Great Connection' camp sessions. On each waiting list there was approximately 10-20 kids names.

1998 COMMUNITY SERVICES SECTION ANNUAL REPORT

Newport High School highlights continued:

- Mike Fry has spent a good deal of time teaching both Newport and Tyee students how to deal with rumors, by talking about them and not letting them become something they are not.
- He spoke at assemblies about traffic safety.
- Officer Fry got together with the manager of the Woodsong apartment complex and formulated a plan to deal with students smoking and loitering.
- He performed in Homecoming assembly as a member of the Village People.

Robinswood High School

- Officer Lisa Piculell handled 629 calls on campus, 7 calls from the neighborhood, had 457 meetings with students, took 36 CR" and intervened 237 times. All in 4 months!
- In October, she spent 3 days in Chico, CA, looking at their alternative High School.
- Introduced OCC to the district by presenting it to the 8th graders and PTSA at Tillicum Middle School in late October.
- Created a warning notice for first time smoking offenders and a neighborhood clean up program for repeat offenders.
- Meets weekly with staff to advise them of police matters.
- Was commended by the school nurse at Highland for her compassion and efforts with a sexual abuse case.
- Officer Lisa Picullel investigated a gun case in December in which two students both possessed the same handgun at separate times on campus. Both were arrested. She later facilitated a review of the incident with staff and students.

"Loyalty engenders support from the people we serve and common purpose within the department."

1998 COMMUNITY SERVICES SECTION ANNUAL REPORT

Sammamish High School

- Officer Rohde handled 544 calls on campus, took 81 from the neighborhood, met with students 652 times, took 121 crime reports and intervened in 130 separate incidents.
- In June, John received an award for Excellence in Academic Achievement from President Clinton.
- John convinced the booster club to purchase a portable breath tests for the school.
- In March, He spent 3 days at a school safety fair, demonstrating the Fatal Vision Goggles, fingerprinting small kids and displaying the radar trailer.
- Helped Odle Middle School establish a drug intervention program.
- Taught classes on the legal aspects of rape.
- As an April Fool's joke, he dressed as a gang member for the day.
- Conducted many barbecues for both students and staff.
- Helped coach the track team.
- Just prior to the prom, spoke of the dangers of drinking and driving to the junior and senior classes.
- Was able to attend almost every athletic event.
- Organized a toy, food, and clothes drive at Xmas for 4 families.

"We work to enhance their safety and security now and in the future."

1998 COMMUNITY SERVICES SECTION ANNUAL REPORT

FAMILY SERVICES UNIT

Domestic Violence

Fourteen years ago, the Bellevue Police Department began to aggressively combat crimes associated with domestic violence, making these crimes a top priority. As a result of our concerted response, we have experienced a steady decrease in domestic violence case for the three years, until 1998.

Collaboration with other agencies is essential in combating domestic violence. In 1983, Bellevue Police, Bellevue District Court, Bellevue Probation, the Prosecuting Attorney, Eastside Domestic Violence, and Mental Health agencies began to work together to stop the violence. Now representatives from each of the agencies come together in order to share ideas and to strategize on ways to improve upon our responses to this problem.

DOMESTIC VIOLENCE CASES OF INTEREST - 1998

- The victim in this case only spoke Chinese and she alleged a long history of serious abuse. With the assistance of PSO Toolles, who speaks Chinese. A written statement was obtained. The statement specifically detailed four earlier incidents of abuse that occurred during the past year. All cases were filed with the Prosecutor's office. The suspect was already in custody on a separate assault charge.
- Another case was a felony harassment case, with possible custodial interference implications. The officer took the initial report, but was unable to locate the suspect or the 5-year-old child in common. We were able to track the suspect down to his workplace in Redmond and with the assistance of a patrol officer and arrested him for felony harassment. We were able to locate the missing child, who was returned to his mother.
- This case was a felony assault case. We responded to Bellevue High School after the victim told the SRO that her mother attempted to strangle her, while making threats to kill her. CPS was also called to the scene. We took the victim's and a witness's statement. The victim was taken to her doctor for an examination and her injuries photographed. We went out to the suspect's residence and arrested her for 'Assault 2'. The suspect gave us a taped confession regarding the incident.
- We located and arrested a Domestic Assault suspect who fled the scene before the arrival of the police after the assault occurred. The suspect had assaulted his wife in front of their two young children and the wife reported that there was a long history of unreported domestic violence. The victim also reported that she was extremely frightened for her safety and that of her children.

1998 COMMUNITY SERVICES SECTION ANNUAL REPORT

This Year in the DV Unit:

- Between October and December of 1998, Detective Fowler was able to obtain a lot of useful training classes.
 - The National Conference on Domestic Violence in Dallas, Texas.
 - The Greater Puget Sound Domestic Violence Conference at the Criminal Justice Training Center.
 - The Teen Dating Violence Workshop at Evergreen Hospital.
- Detective Fowler also completed a Basic Criminal Investigation and Basic Homicide Investigation class at the Criminal Justice Training Center.
- A new meeting group was formed, with Eastside Domestic Violence Program, Youth Eastside Services, City of Bellevue Prosecutor's Office, Lieutenant Baker and Officer Fowler. This group will meet once-a-month to discuss any concerns and questions that we might have for one another. So far the group has Brought clarity to: issues surrounding protection orders, officer's responses at domestic violence calls, and how we can assist each other in our jobs.
- In December of 1998 a new Domestic Violence section was added to the ADR and was implemented beginning January 1999. The new section required squad roll call training, which was completed throughout December. The new section should make tracking and prosecution of Domestic Violence cases easier for all parties.
- Detective Fowler has provided Domestic Violence Training to all FTOS in December. The training addressed excited utterance, photographs at scenes and dealing with children who witness domestic violence.

"We demonstrate care and commitment in every process or service we deliver."

1998 COMMUNITY SERVICES SECTION ANNUAL REPORT

Juvenile Detectives

During this past year the two juvenile detectives who work with juvenile offenders are primarily responsible for investigating MV Prowls and Strips. These crimes are our most prolific crime in the city since they are a crime of opportunity. This year we instituted a Car-Crimes task force in conjunction with the Investigations section of the auto theft unit. We initiated this task force by taking two officers from patrol and assigning them to work plain clothes. Their responsibility is to locate known car thieves and car prowlers, and to maintain surveillance on known thieves. This proactive approach reduced the number of car prowls and strips 23 % for 1998.

Combined Total Prowl/Strips	YTD 1998	YTD 1997	% Changes
	1217	1574	-23%
	Total Property Recovered		\$16,515.00

Gangs

Two additional detectives concentrate on gang crimes and activities. Taking a proactive approach, these detectives address rather than just investigating the crime. Key components in their approach are:

- **Education** of the youth, the parents, the schools and the community. This is an essential step in to promote understanding and awareness of issues facing youth today. 'Gang Awareness/Education Presentations' are made available to both private and public organizations.
- **Intervention** for at-risk youth and their families with in-home counseling and intervention. This is the ultimate goal in dealing with youth crimes. Counseling with the youth and there families has been the most effective deterrent for those youths most at-risk.
- **Enforcement** of gang related crimes committed by youth that associate with gangs, as well as enforcement for crimes that are committed at school facilities by youth.

1998 COMMUNITY SERVICES SECTION ANNUAL REPORT

Gangs continued:

GANG CASES OF INTEREST FOR 1998

- On February 12, 1998 around 1720 hours, the victim was on a metro transit bus, and was robbed of the money in his wallet by two suspects who were part of a larger group. During the investigation, the two main suspects were identified as associates of the "Roll' 60's Crips." Both subjects were eventually arrested and later convicted for their part in the strong arm robbery.
- On June 12, 1998 at about 2130 hours, two car loads of subjects described as Russian/Eastern Europeans were involved in the assault of a male employee at the GMA Research Corporation, just as the business was closing for the night. Based on the initial vehicle and suspect descriptions, as well as subsequent photomontage identities, three suspects were eventually arrested. Charges were filed against two of the suspects involved.
- On October 21, 1998 at approximately 2134 hours, a gang related stabbing occurred involving two members of a Kirkland gang set called the "BSL" or "Brown Stone Locos" and several members of a Bellevue set called the "Rollin 60's Crips." The two suspects from BSL ambushed a group of about six subjects on foot from the Rollin 60's with hunting knives. One of the victims was stabbed twice in the torso and another victim was stabbed once to the back of his neck. The descriptions of the suspects were given over radio, and due to some joint information exchanges between Bellevue, Kirkland and Redmond, which had occurred during the summer months, the subjects were immediately identified. Kirkland Police Department was notified and officers were waiting as the suspects parked their vehicle in front of one of the suspect homes. Three subjects were arrested within 30 minutes of the stabbing. Charges were filed on two of the suspects for 'Assault 1st Degree'. Both victims recovered from their injuries. The case is scheduled for trial in February of 1999.
- On November 18, 1998 at about 1300 hours, three Hispanic juveniles assaulted and robbed a juvenile male of \$80.00 cash at the Downtown Transit Center, shortly after the victim got off of the bus. The victim was shoved and punched and taken to the ground by two of the three suspects before they removed his wallet and stole cash from it. All three suspects were eventually identified and arrested. All gave confessions regarding their involvement. The three suspects have ties to an Eastside Hispanic gang set called SUR 13-VSL". Charges have been filed on all three suspects and are pending with the King county Juvenile Court.
- On January 29, 1998 two women were assaulted by a suspect with a steel pipe. Both women ended up in critical condition. The suspect was identified and after a 12-hour manhunt in which Officers Kleinknecht, Engman, Arpin, and Black were involved, the suspect was eventually located in Renton. In a dumpster behind a 7-11 store in the City of Auburn, key evidence was found. Officer Engman also assisted Detective Gomes with the interview of the suspects after he was arrested. Suspect admitted to the assault during the interview. This case is currently scheduled for trial in February of 1999.

1998 COMMUNITY SERVICES SECTION ANNUAL REPORT

Gangs continued:

- On October 12, 1998 Detective Engman assisted Detective Kleinknecht with a Burglary investigation in which 10 firearms were stolen. The investigation revealed that the suspects were members of a Seattle gang set called the "Oriental Troop". A total of six suspects were identified and arrested during a two-week period which involved working with the ATF, Seattle Gang Unit and the U.S. Attorney's office.

Number of Cases Closed	YTD 1998	YTD 1997	% Change
By Arrest	113	117	-.03%
Other	39	36	.08%
Inactivated	1163	793	47%

Below are the statistics for Juvenile investigations for 1998:

Juvenile Investigations	1998
Gang Incidents	61
Arrests	106
Warrant Arrests	40
Non-Gang Arrests	61
Firearms Involved	18
Dangerous Weapons	17
School Related	14
Gang Graffiti	52
Family Interventions	15
Group Presentations	34

1998 COMMUNITY SERVICES SECTION ANNUAL REPORT

VOLUNTEERS

The Community Services Section relies heavily on the Departments Volunteer Program. The Section uses volunteers to staff Community Stations and to input data into computer programs which are used to evaluate the progress of the Section. These evaluations are made on a monthly, quarterly and annual basis.

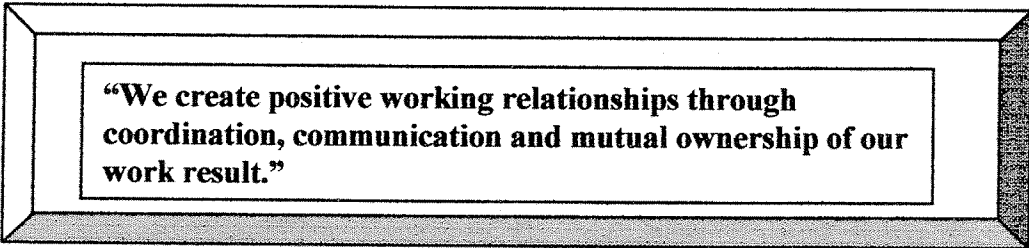
In 1998, Community Services Section Volunteers served a total of 6,549 hours. Their services included the following:

- Staffing the desks at the Crossroads and Factoria Community Stations.
- Performing Home Security Surveys.
- Managing the False Alarm Program.
- Supporting D.A.R.E. .
- Coordinating the Department's Citizen Academy Sessions and Annual Reunion.
- Revamping and bringing up to date the Domestic Violence Database.

The Domestic Violence data base efforts mentioned above represented a major accomplishment for the Community Services Section. The original data-base, which had been developed and maintained using an older, very cumbersome computer program, was completely redone in a newer, more user-friendly program that enables far more flexibility and specificity in data entry and report generation. The volunteer assisted in program design and then entered all domestic violence cases from 1998. This was a massive data-entry effort, because no data had been input during reprogramming: this resulted in about an eight-month backlog of cases when the new system was finally ready to receive information:

Also, in 1998, one volunteer who had been active in the Department's D.A.R.E. Program for many years, undertook a project through Advance Bellevue to form a D.A.R.E. Advisory Board. The Board enables direct fundraising for the program as well as administrative coordination between the national D.A.R.E. council and local D.A.R.E. programs.

In addition to the projects and programs noted above, the volunteers assisted in organizing and staffing several special programs throughout the year, including crime prevention and home safety trade shows, child safety fairs, and the second annual Night Out Against Crime.



"We create positive working relationships through coordination, communication and mutual ownership of our work result."

1998 COMMUNITY SERVICES SECTION ANNUAL REPORT

ATTACHMENT A

City of Bellevue, WA Domestic Violence Statistics 1998

Relationship of the Participants in 1998 Domestic Disputes:

Relationship Description	Totals
Siblings	28
Child/Parent	111
Same Sex	3
Child in Common	53
Former Dating	82
Dating	81
Former Residing	54
Residing Together	218
Former Spouse	101
Spouse	244

1998 Cases where responding Officer reported alcohol use by participants:

Description	Percentage
Victim Had Been Drinking	25%
Suspect and Victim Had Been Drinking	48%
Suspect Had Been Drinking	138%

1998 COMMUNITY SERVICES SECTION ANNUAL REPORT

ATTACHMENT A

City of Bellevue, WA Domestic Violence Statistics 1998

1998 Domestic Violence Incidents Per Day of the Week:

Day of the Week	Number of Incidents
Monday	137
Tuesday	125
Wednesday	132
Thursday	125
Friday	131
Saturday	174
Sunday	161

1998 Domestic Incidents Statistics by Month:

Month	Number of Incidents
January	68
February	55
March	57
April	58
May	76
June	121
July	106
August	98
September	91
October	82
November	77
December	100

1998 COMMUNITY SERVICES SECTION ANNUAL REPORT

ATTACHMENT A

City of Bellevue, WA Domestic Violence Statistics 1998

Type of Violence:

Description of Violence Used	Number of Time
Unknown or None	47
Verbal Only	450
Stalking	-0-
Threats	109
Violation of Order	86
Pushed	125
Slapped	62
Punched	56
Strangled	20
Sex Assault	3
Weapon Used	25
Throwing Objects	-0-
Destruction of Property	-0-

Incidents Where Children Were Present:

Description	Number of Incidents
No Children Present	1
Adult Child Present	22
Juvenile Child Present	283
Unknown	680

1998 COMMUNITY SERVICES SECTION ANNUAL REPORT

ATTACHMENT A

City of Bellevue, WA Domestic Violence Statistics 1998

Action Taken by the Responding Officer:

Description	Numbers
Closed – Inactive – Information Only	530
Summons	76
Arrest on Unrelated Charges	6
Refer to PA	137
Arrest Both (Misdemeanor)	5
Arrest Both (Felony)	2
Arrest Suspect (Misdemeanor)	211
Arrest Suspect (Felony)	20

Location of Incident by Police District:

District Number	Number of Incidents
District # 1	106
District # 2	107
District # 3	151
District # 4	242
District # 5	225
District # 6	73
District # 7	74



