

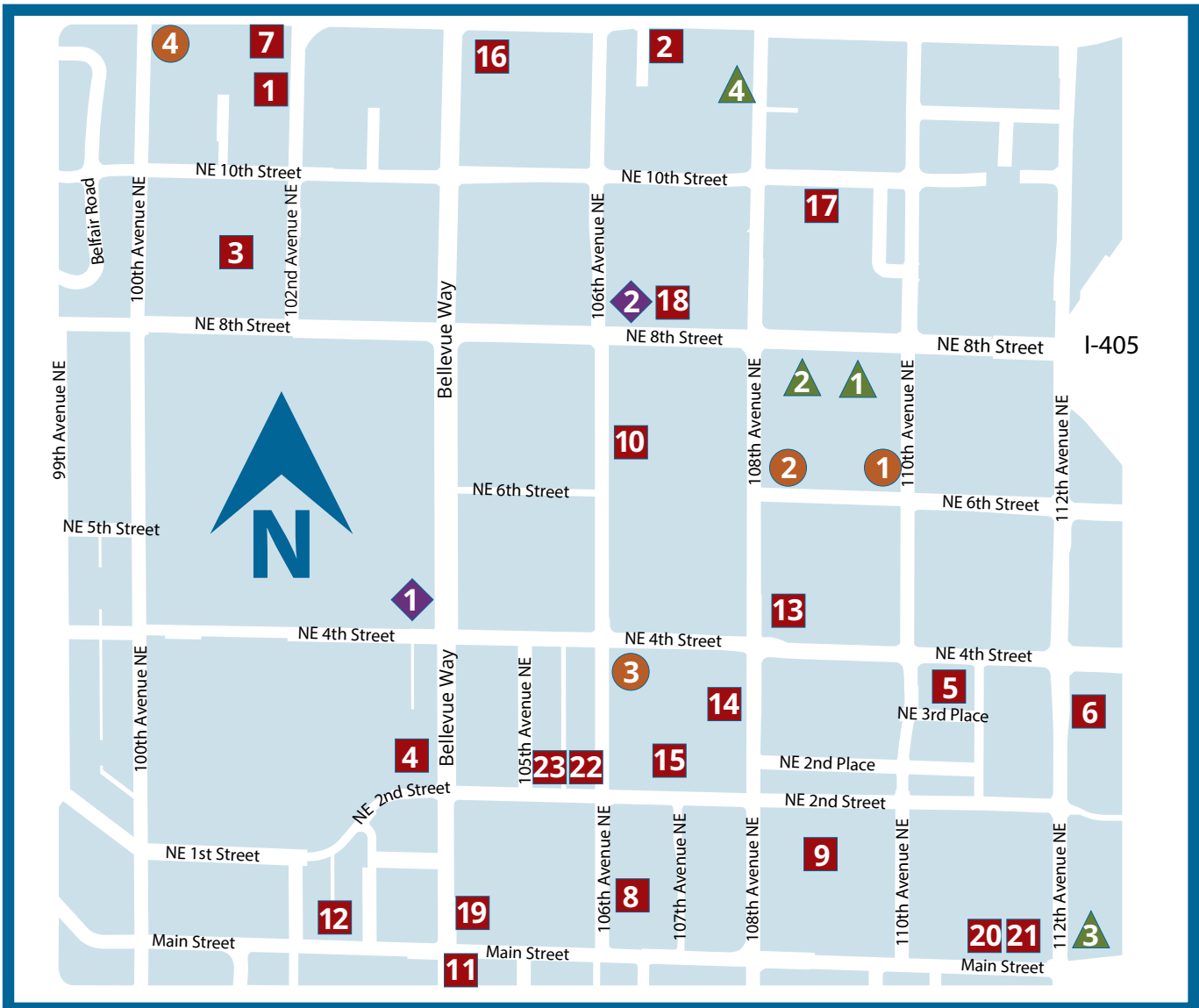
Q1 2025



# Downtown Bellevue Major Projects List

This List is intended to be a "snapshot" of development (proposed through construction) within Downtown Bellevue. If you have questions regarding any of the projects on this List, contact the City of Bellevue Contact (Land Use Planner) listed for that project.





## In Review – Land Use & Building

Projects currently undergoing Entitlement Review (Design Review, Master Development Plan, Administrative Conditional Use or Conditional Use) or Building (Construction) Permit Review.

1. Pinnacle North (MDP Review & Design Review) | 10112 NE 10th Street
2. 10621 NE 12th Street (Building Permit) | 10621 NE 12th Street
3. Pinnacle South (MDP Review & Design Review) | 10116 NE 8th Street
4. Park Row (Building Permit) | 201 Bellevue Way NE
5. 111th Avenue NE Apartments (Building Permit) | 11027 NE 4th Street
6. Kanon Office Towers (MDP Review & Design Review) | 222 112th Avenue NE
7. SRM Polynesia (Building Permit) | 1125 102nd Avenue NE
8. The Arcadian (Design Review) | 120 106th Avenue NE
9. Main Street Place (MDP Review & Design Review) | 103 110th Avenue NE
10. 606 106th ONNI (Building Permit) | 606 106th Avenue NE
11. 12 Bellevue Way (Design Review) | 12 Bellevue Way
12. North of Main (Design Review) | 15 103rd Avenue NE

13. 400 108th (Building Permit) | 400 108th Avenue NE
14. 305 Residential (Design Review) | 305 108th Avenue NE
15. 228 106th Pl. NE (Building Permit) | 228 108th Place NE
16. Bellevue North (MDP Review & 2 Design Reviews) | 1000-1020 Bellevue Way NE & 10451 NE 12th Street
17. Crest Holdings (MDP Review & Design Review) | 919 109th Avenue NE (Pacific Regent parking lot)
18. Washington Square (MDP Review) | 10620 NE 8th Street
19. Main & Bellevue (MDP Review & Design Review) | 102 Bellevue Way NE
20. High Street Residential (Design Review) | 11040 Main Street
21. Broadstone 200 (Design Review) | 200 112th Avenue NE
22. Filament East (Building Permit) | 201 106th Avenue NE
23. Filament West (Building Permit) | 200 105th Avenue NE

## Under Construction

1. Bellevue 600 Phase 1 | 600 108th Avenue NE
2. Bellevue 600 Phase 2 | 600 108th Avenue NE
3. Four 106 | 320 106th Avenue NE
4. Pinnacle Apartments (Building Permit) | 1036 100th Avenue NE

## In the Pipeline (Pre-application Conference held)

Projects have received early guidance through the Preapplication Conference, but have not yet applied for Entitlement Review.

1. The Bellevue | 401 Bellevue Way NE
2. Bevel Office Building | 870 106th Avenue NE

## Issued

Projects have received Entitlement Review approval but no construction permits have been submitted.

1. Cloudvue Master Development Plan (MDP Review) | 10855 NE 8th Street
2. Cloudvue (Design Review) | 10855 NE 8th Street
3. 112th and Main (MDP Review & Design Review) | 100 112th Avenue NE
4. Brizo (Design Review) | 1051 108th Avenue NE

# In Review – Land Use and Building

## 1. Pinnacle Bellevue North

10112 NE 10th Street

**MDP Review & Design Review:**

**21-103192-LP & 21-103195-LD**

- Mixed-Use Multi-Building Development
- 6 Towers – Ranging from 9-26 Stories
- 60,200 SF Office
- 1,613 Residential Units
- 129,500 SF Active Use
- 1,814 Parking Spaces

**Contact: Kandice Kwok: 425-589-3487**

**City of Bellevue Contact: Amy Tarce  
425-452-2896 or [atarce@bellevuewa.gov](mailto:atarce@bellevuewa.gov)**



## 2. 10621 NE 12th Street

10621 NE 12th Street

**Building Permit: 23-102773-BB**

- Mixed-Use Residential Building
- 7 Stories
- 239 Units
- 219 Parking Spaces

**Contact: Tony Fan 206-587-3797**

**City of Bellevue Contact: Amy Tarce  
425-452-2896 or [atarce@bellevuewa.gov](mailto:atarce@bellevuewa.gov)**



### 3. Pinnacle South

10116 NE 8th Street

**(MDP Review & Design Review):**

**21-104954-LP, 24-122583-LD**

- Mixed-Use Office and Residential
- 8 Buildings
- Varies – 10-20 Stories
- 125,000 SF Office
- 114,000 SF Retail
- 1,518 Residential Units
- 177 Hotel Units
- 2,500 Parking Spaces

**Contact: Kandice Kwok 425-589-3487**

**City of Bellevue Contact:**

**Angus Bevan 425-229-6607**

**orabevan@bellevuewa.gov**



### 4. Park Row

201 Bellevue Way NE

**Building Permit: 23-110884-BB**

- Mixed-Use Residential
- 21 Stories
- 10,100 SF Active Use
- 142 Residential Units
- 277 Parking Spaces

**Contact: Hossein Amanat 604-433-9812**

**City of Bellevue Contact: Laurie Tyler**

**425-452-2728 or ltyler@bellevuewa.gov**





## 5. 111th Avenue NE Apartments

11027 NE 4th Street

**Building Permit: 23-110801-BB**

- Residential Building
- 8 Stories
- 144 Units
- 101 Parking Spaces

**Contact: Scott Douglas, 425-298-0080**

**City of Bellevue Contact:**

**Mark C. Brennan 425-452-2973 or  
mcbrennan@bellevuewa.gov**



## 6. Kanon Office Towers

222 112th Avenue NE

**MDP Review & Design Review:  
22-127949-LD & 22-127959-LP**

- 2 Mixed Use Office Towers
- 15 Stories Each
- 682,640 SF Office
- 15,400 SF Active Use
- 892 Parking Spaces

**Contact: Jarod Kurzner 312-577-7139**

**City of Bellevue Contact: Amy Tarce  
425-452-2896 or atarce@bellevuewa.gov**

**Komal Agarwal 425-452-7224 or  
kagarwal@bellevuewa.gov**



## 7. SRM Polynesia

1125 102nd Avenue NE

**Design Review: 22-114105-LD**

- Residential Building
- 6 Stories
- 167 Units
- 146 Parking Spaces

**Contact: Brad Austin 206-676-5634**

**City of Bellevue Contact:**

**Richard Hansen 425-452-2739 or  
rhansen@bellevuewa.gov**



## 8. The Arcadian

120 106th Avenue NE

**Design Review: 22-113780-LD**

- Mixed-Use Office Tower
- 18 Stories
- 450,000 SF Office
- 6,900 SF Active Use
- 805 Parking Spaces

**Contact: Nancy Lim, 206-515-4659**

**City of Bellevue Contact: James Harris  
425-452-5278 or jaharris@bellevuewa.gov**



## 9. Main Street Place

103 110th Avenue NE

**MDP Review & Design Review:**  
**22-112163-LD & 22-111765-LP**

- 963,420 SF Office in 2 Towers
- 342 Units in 2 Buildings
- 101,330 SF Active Use
- 2,133 Parking Spaces
- Varies up to 16 Stories

**Contact:** Jon Hall 206-551-7340

**City of Bellevue Contact:** James Harris  
425-452-5278 or jaharris@bellevuewa.gov



## 10. 606 106th

606 106th Avenue NE

**Building Permit:** 24-104362-BB

- Two Mixed-Use Residential (Towers 1 & 2)
- One Mixed-Use Office (Tower 3)
- 54 Stories (Tower 1)
- 54 Stories (Tower 2)
- 46 Stories (Tower 3)
- 1,339 Residential Units (Towers 1 and 2)
- 64,525 SF Active Use Space
- 1,339 Parking Spaces

**Contact:** Brian Brodeur 312-477-2305

**City of Bellevue Contact:** James Harris  
425-452-5278 or jaharris@bellevuewa.gov





## 11. 12 Bellevue Way

12 Bellevue Way SE

**Design Review: 22-113130-LD**

- Mixed Use Residential Building
- Varies – 5-7 Stories
- 15,026 SF SF Active Use
- 376 Units
- 438 Parking Spaces

**Contact: Jon O’Hare 425-301-9541**

**City of Bellevue Contact:**  
**Mark C. Brennan 425-452-297 or**  
**mcbrennan@bellevuewa.gov**



## 12. North of Main

15 103rd Avenue NEt

**Design Review: 22-130414-LD**

- Mixed-Use Residential Building
- 8 Stories
- 137 Units
- 11,000 SF Retail
- 146 Parking Spaces

**Contact: Lisa Kim Bartin**  
**206-344-5700 x281**

**City of Bellevue Contact: Amy Tarce**  
**425-452-2896 or atarce@bellevuewa.gov**



### 13. 400 108th

400 108th Avenue NE

**Building Permit: 21-134781-BB**

- Mixed-Use Office Tower
- 18 Stories
- 308,950 SF Office
- 7,420 SF Active Use
- 637 Parking Spaces

**Contact: Kate Freels 206-521-3442**

**City of Bellevue Contact: Amy Tarce**  
425-452-2896 or [atarce@bellevuewa.gov](mailto:atarce@bellevuewa.gov)



### 14. 305 Residential

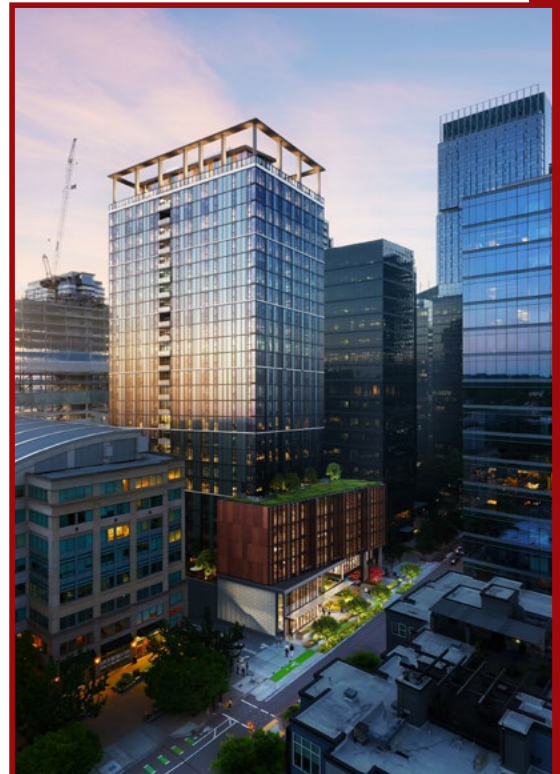
305 108th Avenue NE

**Design Review: 24-119377-LD**

- Residential Building
- 27 Stories
- 355 Residential Units
- 282 Parking Spaces

**Contact: Dustin Thorlakson 425-827-2100**

**City of Bellevue Contact: Komal Agarwal**  
425-452-7224 or  
[kagarwal@bellevuewa.gov](mailto:kagarwal@bellevuewa.gov)



## 15. 228 106th Pl. NE

228 108th Place NE

**Building Permit: 22-114275-BB**

- Residential Building
- 8 Stories
- 171 Residential Units
- 93 Parking Spaces

**Contact: Jay Janette 206-453-3645 x106**

**City of Bellevue Contact:**

**Mark C. Brennan 425-452-2973 or  
mcbrennan@bellevuewa.gov**



## 16. Bellevue North Phase 1 and Phase 2

1000-1100 Bellevue Way NE &  
10451 NE 12th Street

**MDP Review & 2 Design Reviews:  
24-112324-LP, 24-112326-LD (Phase 1),  
24-112326-LD (Phase 2)**

Phase 1

- 466 Residential Units in One High-Rise Tower and One Mid-Rise Tower
- 18,732 SF Retail Uses
- 517 Parking Spaces
- Outdoor Plaza and Through-Block Pedestrian Connection

Phase 2

- 429 Residential Units in Two 8-Story Buildings
- 23,683 SF Retail/Restaurant Uses
- 7 Affordable Housing Units
- 474 Parking Spaces
- Outdoor Plaza



**Contact: Chris Dana 206-679-1223**

**City of Bellevue Contact:**

**Phase 1: Amy Tarce 425-452-2896 or  
atarce@bellevuewa.gov**

**Phase 2: Wayland Barton 425-452-2725  
or wbarton@bellevuewa.gov**

## 17. Crest Holdings

919 109th Avenue NE

**MDP Review and Design Review**  
**23-127651-LP, 24-101564-LD**

- One 8 Story Building
- One 22 Story Building
- 506 Combined Residential Units
- 2,978 SF Active Uses
- 456 Parking Spaces

**Contact: Amanda Keating**  
**206- 344-5700 x277**

**Mark C. Brennan 425-452-297 or**  
**mcbrennan@bellevuewa.gov**



## 18. Washington Square

10620 NE 8th Street

**MDP Review: 23-128463-LP**

- One Mixed-Use Office Building
- One Mixed Use Residential Tower
- 9 Story Office Building
- 27 Story Residential Building
- 400 Residential Units
- 8,957 SF Active Uses
- 611 Parking Spaces (Approximate)

**Contact: Ka-Chung Kwok 206-816-4684**

**Jim Harris 425-452-5278 or**  
**jaharris@bellevuewa.gov:**





## 19. Main and Bellevue

102 Bellevue Way NE

**MDP Review and Design Review**  
**24-118664-LP, 24-118665-LD**

- Three 26 Story Mixed-Use Residential Towers
- 449 Combined Residential Units
- 756 Parking Spaces

**Contact: Amanat Architect 604-433-9812**

**City of Bellevue Contact:**

**Mark Brennan 425-452-2973 or**  
**mcbrennan@bellevuewa.gov**

**Komal Agarwal 425-452-7224 or**  
**kagarwal@bellevuewa.gov**



## 20. High Street Residential

11040 Main Street

**Design Review: 24-119093-LD**

- Residential Building
- 2 Tower—6 and 8 stories
- 305 Residential Units
- 278 Parking Spaces

**Contact: Jim Westcott: 206-240-2568**

**City of Bellevue Contact:**

**Richard Hansen 425-452-2739 or**  
**rhansen@bellevuewa.gov**



## 21. Broadstone 200

200 112th Avenue NE

**Design Review: 24-126003-LD**

- Two Residential Towers
- 9-Story Tower 1
- 8-Story Tower 2
- 304 Combined Residential Units
- 304 Parking Stalls

**Contact: Jon O’Hare 425-305-9541**

**City of Bellevue Contacts: Jordan Borst  
425-452-6997 or jborst@bellevuewa.gov**

**Genesis Hill 425-452-6112 or  
gllhill@bellevuewa.gov**



## 22. 201 106th (Filament East)

201 106th Avenue NE

**Building Permit: 24-103701-BB**

- Mixed-Use Residential Building
- 8 Stories
- 151 Units
- 1,100 SF Office/1,800 SF Retail
- 151 Parking Spaces

**Contact: Blair Stone 206-290-1758**

**City of Bellevue Contact:  
Mark C. Brennan 425-452-297 or  
mcbrennan@bellevuewa.gov**



### 23. 200 Plaza (Filament West)

200 105th Avenue NE

**Building Permit: 24-103684-BB**

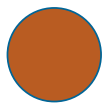
- Mixed Use Residential
- 8 Stories
- 151 Units
- 1,900 SF Office/3,275 Retail
- 162 Parking Spaces

**Contact: Blair Stone 206-290-1758**

**City of Bellevue Contact:**  
**Mark C. Brennan 425-452-2973 or**  
**[mcbrennan@bellevuewa.gov](mailto:mcbrennan@bellevuewa.gov)**







# Under Construction

## 1. Bellevue 600 Phase 1

600 108th Avenue NE

- Mixed-Use Office Tower
- 45 Stories
- 839,500 SF Office
- 11,680 SF Active Uses
- 1,056 Parking Spaces

Contact: Ben Spicer 206-223-5555

City of Bellevue Contact: Laurie Tyler  
425-452-2728 or [lt Tyler@bellevuewa.gov](mailto:lt Tyler@bellevuewa.gov)



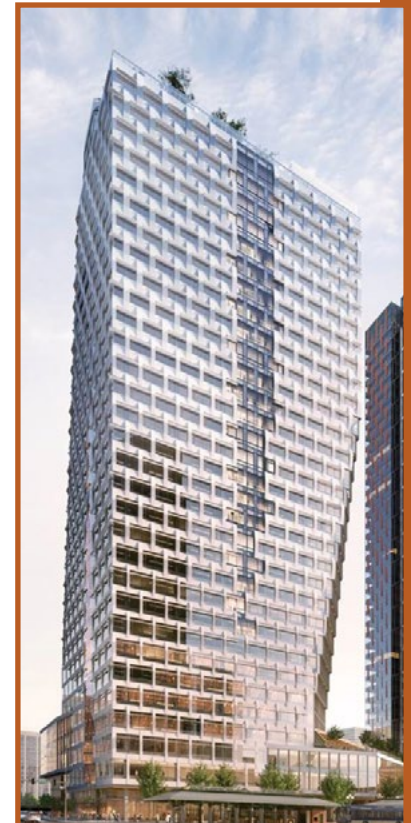
## 2. Bellevue 600 Phase 2

600 108th Avenue NE

- Mixed Use Office
- 31 Stories
- 764,400 SF office
- 21,230 SF retail

Contact: Ben Spicer 206-223-5555

City of Bellevue Contact: Laurie Tyler  
425-452-2728 or [lt Tyler@bellevuewa.gov](mailto:lt Tyler@bellevuewa.gov)





### 3. Four 106

320 106th Avenue NE

- Two-Phase Office Development
- Phase 1 (Design Review):
  - 21 Story Office Tower
  - 426,000 SF Office
  - 12,175 SF Active Use
  - 730 Parking Spaces
- Phase 2:
  - 5 Story Office Building
  - 98,000 SF Office
  - 6,700 SF Active Use
  - 330 Parking Spaces

Contact: Timothy Bismeyer 206-245-2047

City of Bellevue Contact:

Mark C. Brennan 425-452-297 or  
mcbrennan@bellevuewa.gov



### 4. Pinnacle Apartments

1036 100th Avenue NE

- Residential Building
- 6 Stories
- 102 Residential Units
- 110 Parking Spaces

Contact: Ed Linardic 206-283-4764 x1

City of Bellevue Contact:

Mark C. Brennan 425-452-297 or  
mcbrennan@bellevuewa.gov





# In the Pipeline

(Pre-application Conference held)

1. **The Bellevue** | 401 Bellevue Way NE
2. **Bevel Office Building** | 870 106th Avenue NE

# Issued

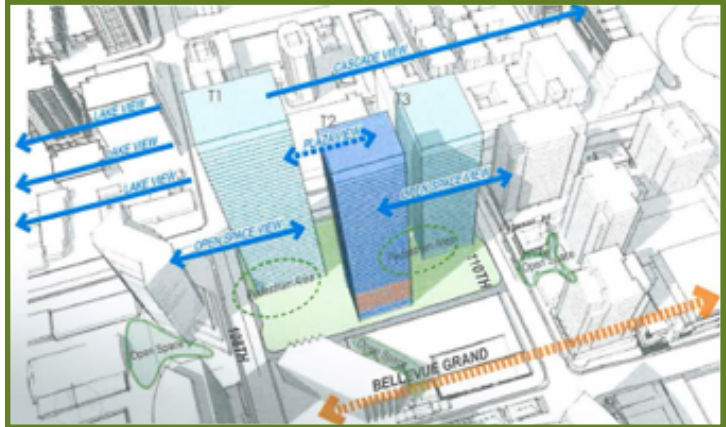
## 1. Cloudivue MDP (Master Development Plan)

10855 NE 8th Street

- Mixed-Use Development:
  - 2 Office Towers
  - 1 Residential/Hotel Tower
- Office: 43 and 43 Stories
- Residential: 53 Stories
- 572 Residential Units
- 177 Hotel Rooms
- 2,400 Parking Spaces

Contact: Kevin Sutton 425-559-7583

City of Bellevue Contact:



## 2. Cloudivue Design Review

10855 NE 8th Street

- Mixed-Use Development:
  - 2 Office Towers
  - 1 Residential/Hotel Tower
- Office: 43 and 43 Stories
- Residential: 53 Stories
- 572 Residential Units
- 177 Hotel Rooms
- 2,400 Parking Spaces

Contact: Todd Stine 206-521-3430

City of Bellevue Contact:



### 3. 112th and Main

100 112th Avenue NE

**MDP Review & Design Review:**  
**21-122609-LP & 21-132031-LD**

- Mixed-Use Office & Residential Development
- Two-Phase Master Plan:
  - Phase 1 – Two 14-story Office Towers
  - Phase 2 – Two 12-story Office Towers
- 1,104,000 SF Office
- 1,051 Parking Spaces

**Contact: Shahny Lutfeali 206-442-4310**

**City of Bellevue Contact: Laurie Tyler**  
**425-452-2728 or [lt Tyler@bellevuewa.gov](mailto:lt Tyler@bellevuewa.gov)**



### 4. Brizo

1051 108th Avenue NE

**Design Review: 21-134179-LD**

- Residential Building
- 5 Stories
- 239 Residential Units
- 201 Parking Spaces

**Contact: Jon O'Hare 425-301-9541**

**City of Bellevue Contact: Amy Tarce**  
**425-452-2896 or [atarce@bellevuewa.gov](mailto:atarce@bellevuewa.gov)**







For alternate formats, interpreters, or reasonable modification requests please phone at least 48 hours in advance 425-452-2973 (voice) or email [mcbrennan@bellevuewa.gov](mailto:mcbrennan@bellevuewa.gov). For complaints regarding modifications, contact the City of Bellevue ADA, Title VI, and Equal Opportunity Officer at [ADATitleVI@bellevuewa.gov](mailto:ADATitleVI@bellevuewa.gov).