

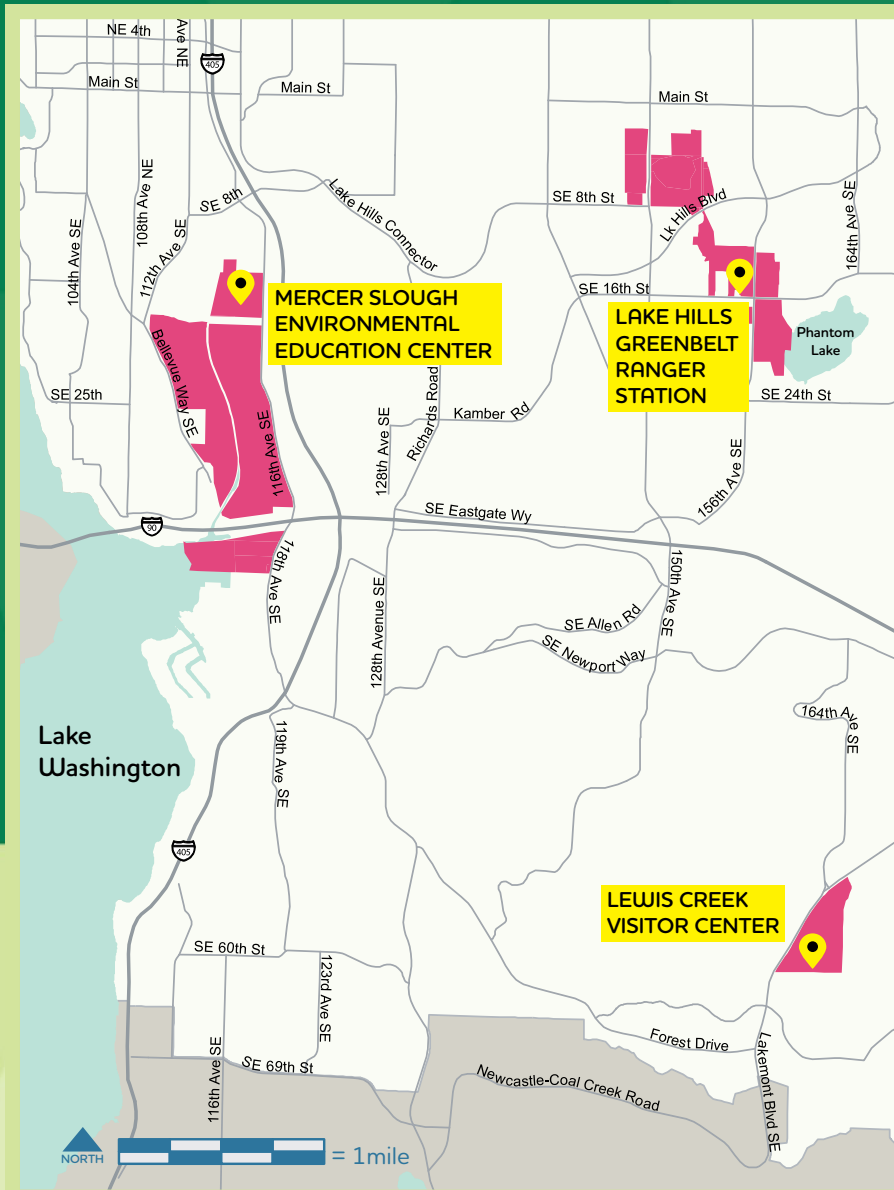
# JR. RANGER

## ACTIVITY BOOK



Bellevue Parks &  
Community Services

# Visitor Centers



**Mercer Slough  
Environmental Center**  
425-452-2565  
1625 118th Ave SE

**Lake Hills Greenbelt  
Ranger Station**  
425-452-7225  
15416 SE 16th St  
(15500 SE 16th Street:  
Parking Location)

**Lewis Creek  
Visitor Center**  
425-452-4195  
5808 Lakemont Blvd SE

## BECOME A JR. RANGER!

1. **ATTEND A PROGRAM AT ALL THREE VISITOR CENTERS.**  
**ANSWER THE QUESTIONS ON THE NEXT PAGE ABOUT THEM.**

The City of Bellevue Park Rangers offer some great programs at the Mercer Slough Environmental Education Center, Lewis Creek Visitor Center, and Lake Hills Greenbelt Ranger Station. You can find a list of all the programs offered at: [Register.BellevueWA.gov](http://Register.BellevueWA.gov)

2. **COMPLETE THE ACTIVITIES IN THIS BOOK**  
Do as much as you can as best as you can.
3. **GET A JUNIOR RANGER BADGE**  
Return your completed book to any of the three visitor centers.



# Ranger Programs

## MERCER SLOUGH ENVIRONMENTAL EDUCATION CENTER

Program title: \_\_\_\_\_

Date attended: \_\_\_\_\_

List two things you learned:

1. \_\_\_\_\_

2. \_\_\_\_\_

What did you like best about this program?

\_\_\_\_\_  
\_\_\_\_\_

## LAKE HILLS GREENBELT RANGER STATION

Program title: \_\_\_\_\_

Date watched: \_\_\_\_\_

List two things you learned:

1. \_\_\_\_\_

2. \_\_\_\_\_

What did you like best about this program?

\_\_\_\_\_  
\_\_\_\_\_

## LEWIS CREEK VISITOR CENTER

Program title: \_\_\_\_\_

Date watched: \_\_\_\_\_

List two things you learned:

1. \_\_\_\_\_

2. \_\_\_\_\_

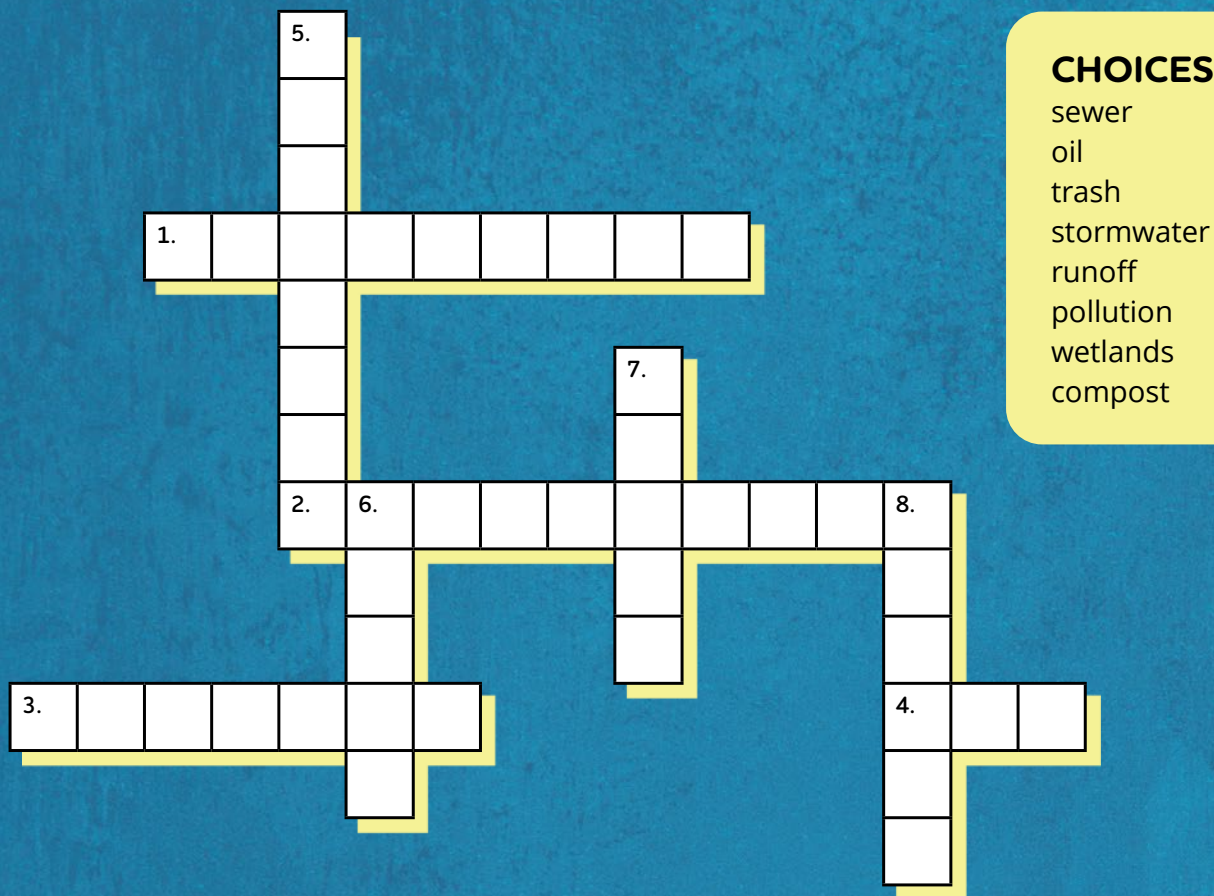
What did you like best about this program?

\_\_\_\_\_  
\_\_\_\_\_

# NOTHING BUT RAIN DOWN THE DRAIN

## KEEP IT CLEAN!

The Stormwater system channels rain and snowmelt into gutters, which drain into streams and rivers. When people pollute stormwater, they also pollute our natural waterways.



### ACROSS:

1. Stormwater is the #1 cause of urban water \_\_\_\_\_ today.
2. \_\_\_\_\_ is the rain or runoff from sprinklers and hoses that flows into the storm drain.
3. Yard and vegetable food waste are suitable additions to a \_\_\_\_\_ pile.
4. A single quart of motor \_\_\_\_\_, if disposed of improperly, can pollute 2 million gallons of water.

### DOWN:

5. \_\_\_\_\_ prevent flooding, improve water quality, and provide habitat for waterfowl, fish and wildlife.
6. Many items found in your \_\_\_\_\_ can be recycled into valuable new products.
7. The water that goes down the drain in our homes goes to the \_\_\_\_\_.
8. \_\_\_\_\_ is another word for the water that flows from rain storms, sprinklers and hoses into the storm drains.

Help the rain drops through the stormwater system without becoming contaminated by pollutants.



**STORMWATER ROUTE**  
Water from storms soaks into ground or flows into the gutters



**LAWN**  
Keep grass, leaves and yard chemicals out of gutters/drains



**LITTERING**  
Don't throw trash into gutters



**STREET RUNOFF**  
Recycle motor oil and prevent car oil leaks



**DRIVEWAYS**  
Take car to the carwash instead of washing in the driveway

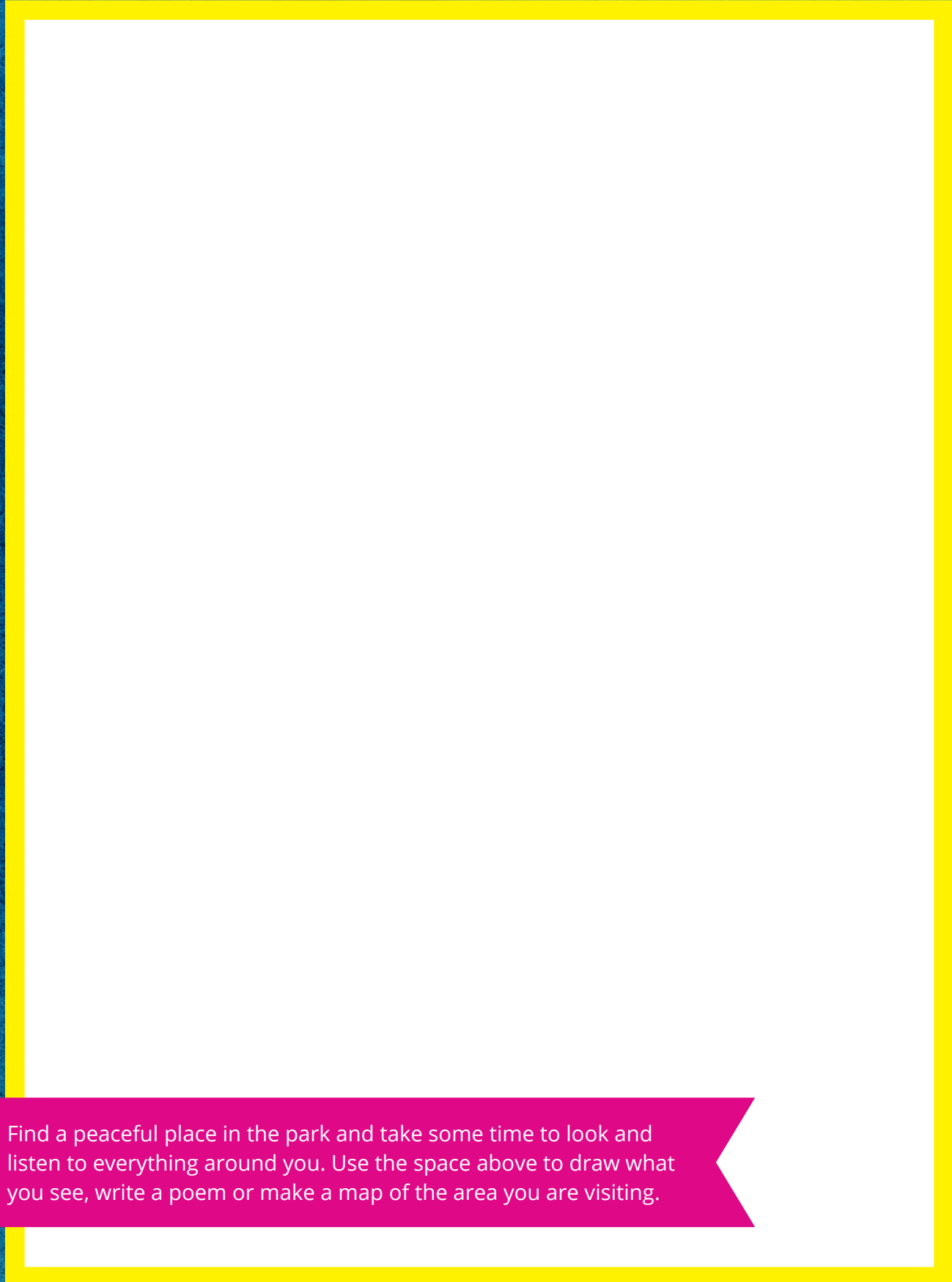


**PET WASTE**  
Dispose in trash





# Nature's Playground



Find a peaceful place in the park and take some time to look and listen to everything around you. Use the space above to draw what you see, write a poem or make a map of the area you are visiting.



bee or insect



squirrel



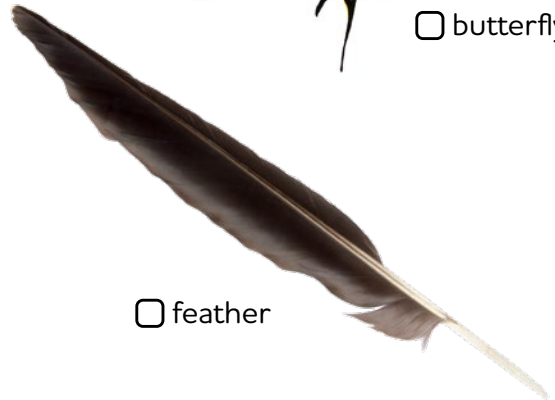
butterfly



slug



caterpillar



feather



bird nest

# Scavenger Hunt



litter

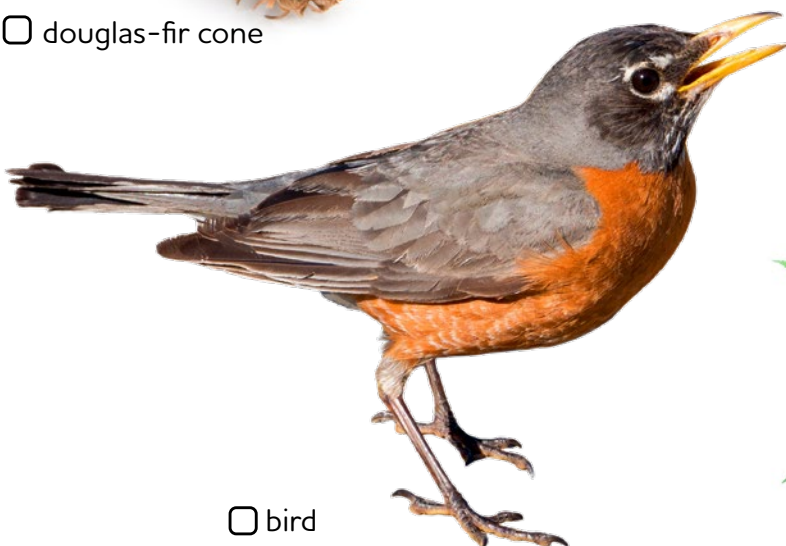
Try to find all of these things while visiting the park (at least 5). Put a check mark next to the ones you see. If you know what the bird, insect is, write it below the picture.



douglas-fir cone



maple leaf



bird



berries



# WORD SEARCH

W	E	T	L	A	N	D	C	A	C	T	D	H	F	Q	T	B	I
A	N	E	T	D	P	M	O	F	O	B	R	N	H	J	C	P	P
T	V	X	Z	Y	H	J	N	T	B	E	A	U	T	M	E	R	L
J	R	L	P	T	O	Q	S	W	E	A	N	P	H	V	T	E	B
H	F	I	S	H	G	J	E	D	I	R	L	I	O	Z	O	C	T
Y	A	V	U	R	A	D	R	Q	D	E	V	M	R	D	R	I	U
B	N	R	D	A	L	M	V	W	E	A	T	H	E	R	P	P	S
Q	E	T	N	C	C	P	A	R	S	M	B	R	Y	L	V	I	F
Y	U	B	L	C	R	W	T	M	N	T	R	E	E	B	C	T	X
R	P	M	H	O	J	K	I	L	Y	U	R	P	V	W	D	A	B
N	R	Q	K	O	L	V	O	J	P	I	S	E	M	T	V	T	E
B	E	N	S	N	A	G	N	C	S	D	T	S	A	V	I	I	L
Y	W	I	N	S	E	C	T	P	R	S	B	M	Q	M	T	O	C
T	O	M	V	R	C	S	P	L	E	E	A	N	J	K	L	N	Y
L	L	F	Y	I	W	K	V	R	B	R	R	V	O	P	G	H	C
W	F	H	R	I	O	U	O	W	L	L	P	V	I	Y	U	I	E
P	M	T	F	V	K	F	R	J	K	P	M	L	R	S	Q	V	R
A	N	E	W	O	O	D	P	E	C	K	E	R	F	O	N	H	J

FISH

RACCOON

HABITAT

WETLAND

DEER

SNAG

PRECIPITATION

FOREST

FLOWER

WEATHER

WOODPECKER

CONSERVATION

STREAM

RECYCLE

INSECT

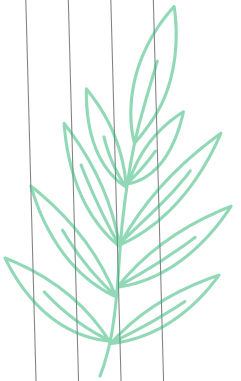
BEAR

TREE

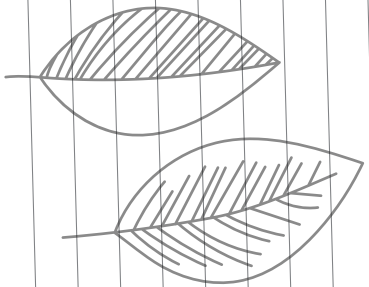
OWL

PROTECT





# OBSERVATION JOURNAL



Mercer Slough Environmental  
Education Center

Date: \_\_\_\_\_

Weather (temperature, precipitation, cloud cover):  
\_\_\_\_\_  
\_\_\_\_\_

An interesting thing I learned today:  
\_\_\_\_\_  
\_\_\_\_\_  
\_\_\_\_\_

My favorite part of the park is:  
\_\_\_\_\_  
\_\_\_\_\_  
\_\_\_\_\_

I am happy we protect this place because:  
\_\_\_\_\_  
\_\_\_\_\_  
\_\_\_\_\_

## Lake Hills Greenbelt Ranger Station

Date: \_\_\_\_\_

Weather (temperature, precipitation, cloud cover):  
\_\_\_\_\_  
\_\_\_\_\_  
\_\_\_\_\_

An interesting thing I learned today:  
\_\_\_\_\_  
\_\_\_\_\_  
\_\_\_\_\_  
\_\_\_\_\_

My favorite part of the park is:  
\_\_\_\_\_  
\_\_\_\_\_  
\_\_\_\_\_  
\_\_\_\_\_  
\_\_\_\_\_

I am happy we protect this place because:  
\_\_\_\_\_  
\_\_\_\_\_  
\_\_\_\_\_  
\_\_\_\_\_  
\_\_\_\_\_

## Lewis Creek Visitor Center

Date: \_\_\_\_\_

Weather (temperature, precipitation, cloud cover):  
\_\_\_\_\_  
\_\_\_\_\_  
\_\_\_\_\_

An interesting thing I learned today:  
\_\_\_\_\_  
\_\_\_\_\_  
\_\_\_\_\_  
\_\_\_\_\_

My favorite part of the park is:  
\_\_\_\_\_  
\_\_\_\_\_  
\_\_\_\_\_  
\_\_\_\_\_  
\_\_\_\_\_

I am happy we protect this place because:  
\_\_\_\_\_  
\_\_\_\_\_  
\_\_\_\_\_  
\_\_\_\_\_  
\_\_\_\_\_





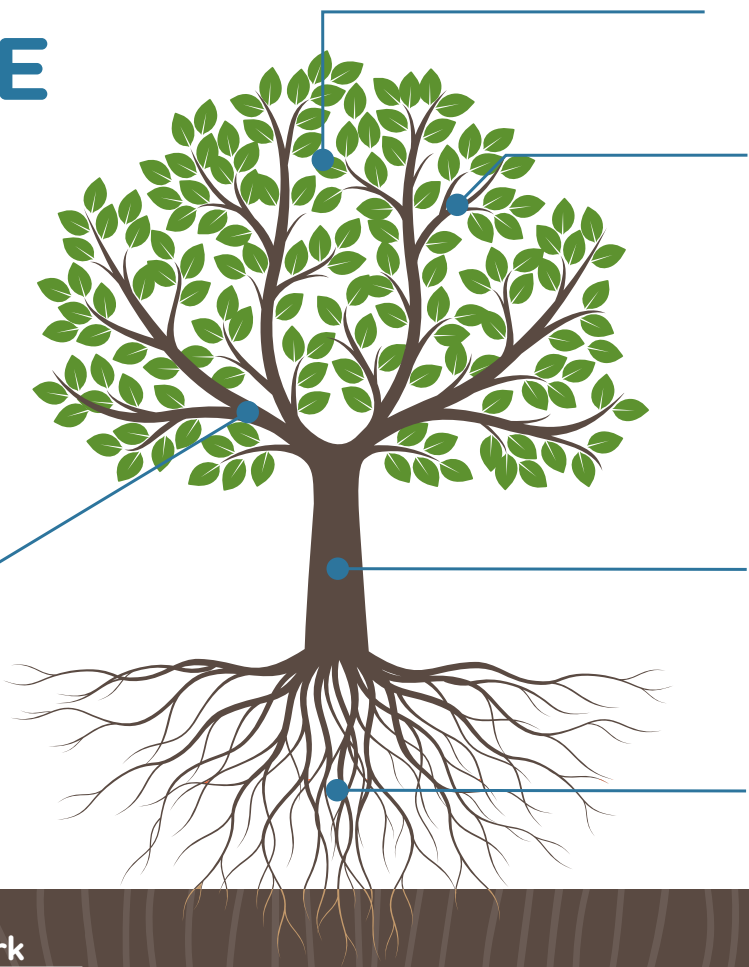
# LOG, SWEET LOG

Many small animals find shelter in dead logs laying on the forest floor. We call these “nurse logs.” In fact, a dead log houses more life than when the tree was alive.

Can you find a “nurse log to investigate?  
Draw or list what you find...or do both.

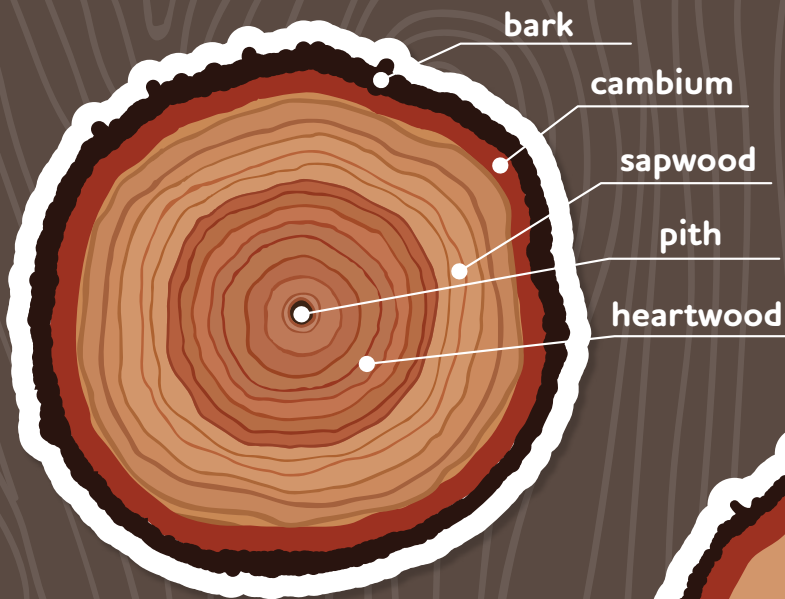
# BUILD A TREE

Trees are important to our forests AND our neighborhoods. They provide a home for birds, insects and animals, convert carbon dioxide into oxygen, provide shade during hot summer days, and soak up moisture from the soil.

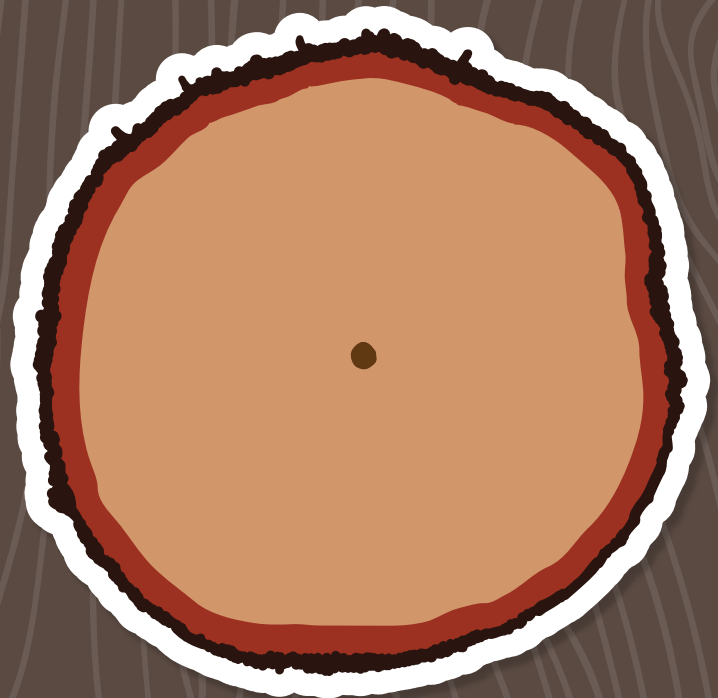


Fill in the parts of a tree:

- leaves
- twig
- branch
- trunk
- roots



You can determine how old a tree is by counting the number of rings. Each ring is one year of growth. Draw in the number of rings this tree would have if it was the same age as you.





# WETLAND SCRAMBLE

Unscramble the names of these wetland animals. Then draw a line to match the names and pictures.

hfsi \_\_\_\_\_



rueitt \_\_\_\_\_



norhe \_\_\_\_\_

amsaladren \_\_\_\_\_



kesan \_\_\_\_\_



eavbre \_\_\_\_\_



cocoran \_\_\_\_\_

gnfadroyl \_\_\_\_\_





Can you label the parts of the food chain?  
Where do you think humans would fit in?

- |                  |                    |               |
|------------------|--------------------|---------------|
| Producer         | Secondary Consumer | Apex Predator |
| Primary Consumer | Tertiary Consumer  | Decomposer    |



# PROTECTING

## SPECIAL

## PLACES

Our parks and our earth need you!  
Caring for our parks and our earth takes everyone. Use the sign language symbols in the box to break the code and find out some of the things that you can do to help.



Use less



Pick up



and put in in trash



Use a



water bottle

&



when possible



lights when not in use



A



B



C



D



E



F



G



H



I



J



K



L



M



N



O



P



Q



R



S



T



U



V



W



X



Y



Z



1



2



3



4



5



6



7



8



9



0



# COLOR ME

How many species can you find in this aquatic ecosystem? Can you name them?  
Color in the picture and share it with a Park Ranger.



duck, heron, songbird, frog, dragonfly, butterfly, beaver, river otter, willow, fern, cattail, yellow pond lily, evergreen tree, grasses, skunk cabbage, mushroom



# HOME FOR WILD LIFE



A standing dead tree is called a SNAG.  
Snags are very important for a variety of wildlife.  
How many can you locate in each park?

Draw a picture of one of the snags you see.  
Can you identify any signs of wildlife?

# GLOSSARY

**Food chain:** It is a sequence of organisms through which nutrients and energy pass as one organism eats another. In a food chain, each organism occupies a different trophic level, defined by how many energy transfers separate it from the basic input of the chain.

**Primary Producers:** Include plants, lichens, moss, bacteria and algae.

**Primary consumers:** Herbivores that feed on plants.

**Herbivores:** Animals that feed only on plants

**Secondary consumers:** Carnivores that prey on other animals.

**Carnivores:** Animals that diets consist primarily on meat.

**Omnivores:** Animals that will consume both meat and plants.

**Tertiary consumer:** A carnivore at the topmost level in a food chain that feeds on other carnivores.

**Apex Predator:** Is a predator at the top of a food chain, with no natural predators other than humans.

**Decomposers:** Are organisms that break down dead plants and animals and other waste. Fungi, Bacteria and insects are known as decomposers.

## JUNIOR RANGER PLEDGE

"I, \_\_\_\_\_  
am proud to be a City of Bellevue Junior Ranger. I promise  
to appreciate, respect and protect all our park areas. I also  
promise to continue learning about the landscape, plants,  
animals and history of these special places. I will share  
what I learn with my friends and family."

# Congratulations!

This is to certify that

\_\_\_\_\_ has completed the requirements and is an official

**CITY OF BELLEVUE**  
**JUNIOR RANGER**

\_\_\_\_\_ Ranger Signature

\_\_\_\_\_ Date



\_\_\_\_\_ Bellevue Parks &  
Community Services



## Mercer Slough Environmental Education Center

425-452-2565

1625 118th Avenue SE

## Lake Hills Greenbelt Ranger Station

425-452-7225

15416 SE 16th Street

15500 SE 16th Street: Parking location

## Lewis Creek Visitor Center

425-452-4195

5808 Lakemont Blvd SE

### DID YOU KNOW?

- In 2007, the Pacific chorus frog was named the state frog of the State of Washington.
- The Pacific chorus frog and the bullfrog are the only 2 frogs you can easily hear croaking in Washington State.
- The Pacific chorus frog can change color rapidly from light to dark.
- A group of frogs is called an army.



## Bellevue Parks & Community Services



For alternate formats, interpreters, or reasonable modification requests please phone at least 48 hours in advance 425-452-4525 (voice) or email [mseec@bellevuewa.gov](mailto:mseec@bellevuewa.gov). For complaints regarding modifications, contact the City of Bellevue ADA, Title VI, and Equal Opportunity Officer at [ADATitleVI@bellevuewa.gov](mailto:ADATitleVI@bellevuewa.gov).