



Ardmore Area

Lake Washington Watershed (WRIA 8)
State Stream #08-0143

LAND CHARACTERISTICS

Basin Area: 451 Total Acres (2% of the City)
Drainage Jurisdiction(s):
450.4 Acres - in Bellevue
1.0 Acres - in Redmond

Highest Elevation: 442 Ft
Lowest Elevation: 122 Ft

Total Length of Open Channel: 6,132 Ft
Total Length of Storm Drainage Pipes: 67,485 Ft
Built Rain Storage Volume per Acre of Impervious Surface:
Less than 0.5 Inches

SALMON PRESENT in BASIN

None known

POPULATION

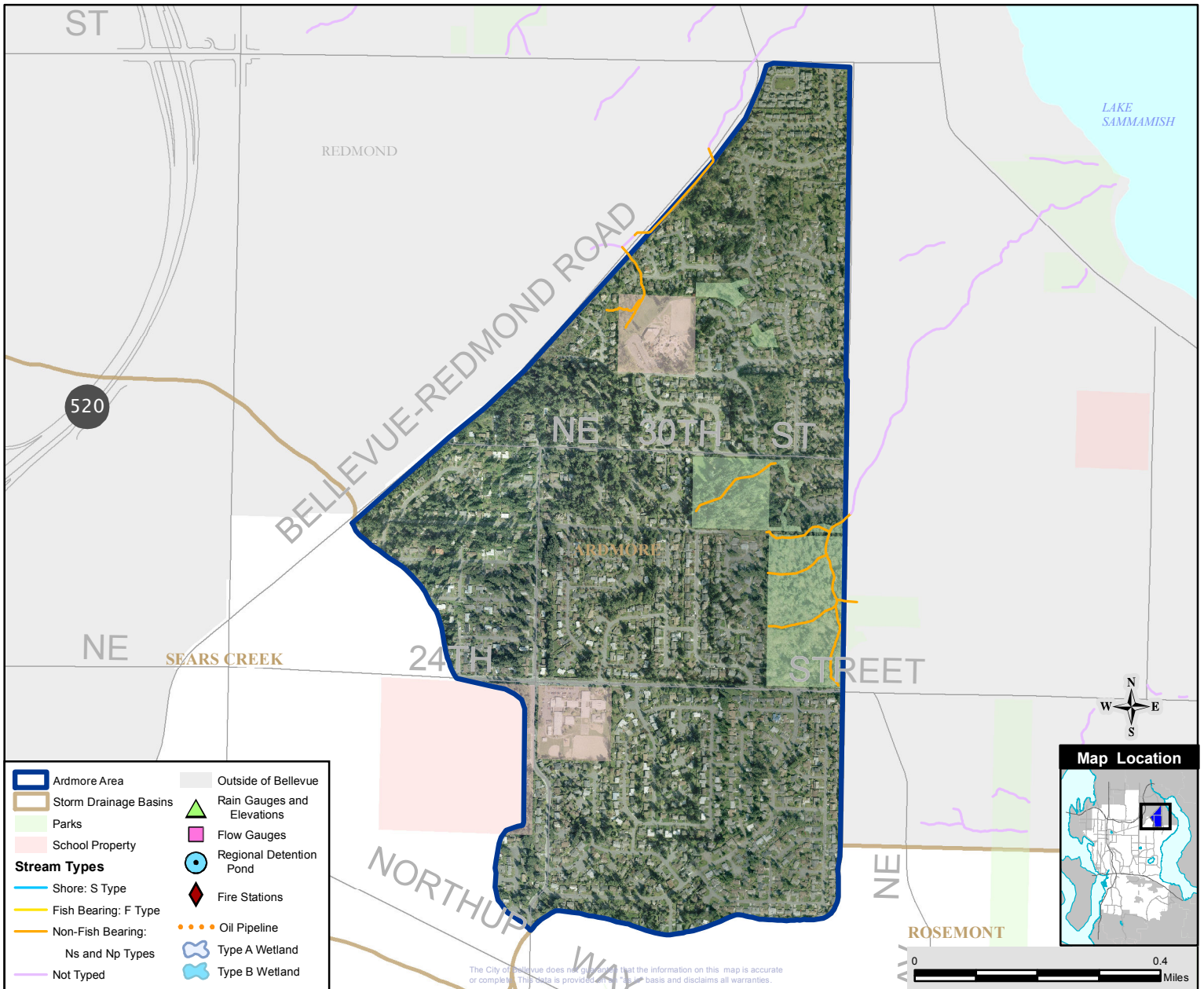
City Basin Population (2000): 3,803 (3.4% of the City)
Basin Population Density: 5,405 People/Square Mile
Number 26 of 26 Basins (One is the lowest density)

LAND USE (within Bellevue city limits)

Public Right of Way:	20.24%	91.39 Acres
Institutional/Government:	5.02%	22.6 Acres
Open Space/Park:	6.76%	30.4 Acres
Single Family Residential:	65.15%	293.5 Acres
Mixed Use/Misc:	1.15%	5.2 Acres

LAND COVER

Impervious:	43%
Tree Canopy:	30%
Impervious in 100 Ft Stream Buffer:	8%
Tree Canopy in 100 Ft Stream Buffer:	83%



The City of Bellevue does not warrant that the information on this map is accurate or complete. This data is provided on an "as is" basis and disclaims all warranties.



Beaux Arts Area

Lake Washington Watershed (WRIA 8)

LAND CHARACTERISTICS

Basin Area: 419 Total Acres (2% of the City)
 Drainage Jurisdiction(s):
 52.2 Acres - in Beaux Arts
 365.6 Acres - in Bellevue

Highest Elevation: 280 Ft
 Lowest Elevation: 18 Ft

Total Length of Open Channel: 0 Ft
 Total Length of Storm Drainage Pipes: 26,702 Ft
 Built Rain Storage Volume per Acre of Impervious Surface:
 Less than 0.5 Inches

SALMON PRESENT in BASIN

Lake only: Chinook*, Coho+, Sockeye
 Rainbow & cutthroat trout (Lake only)
 Steelhead (Lake only)

* Listed Federal Endangered Species
 + City Species of Local Importance (Bellevue Land Use Code 20.25H.150A)

POPULATION

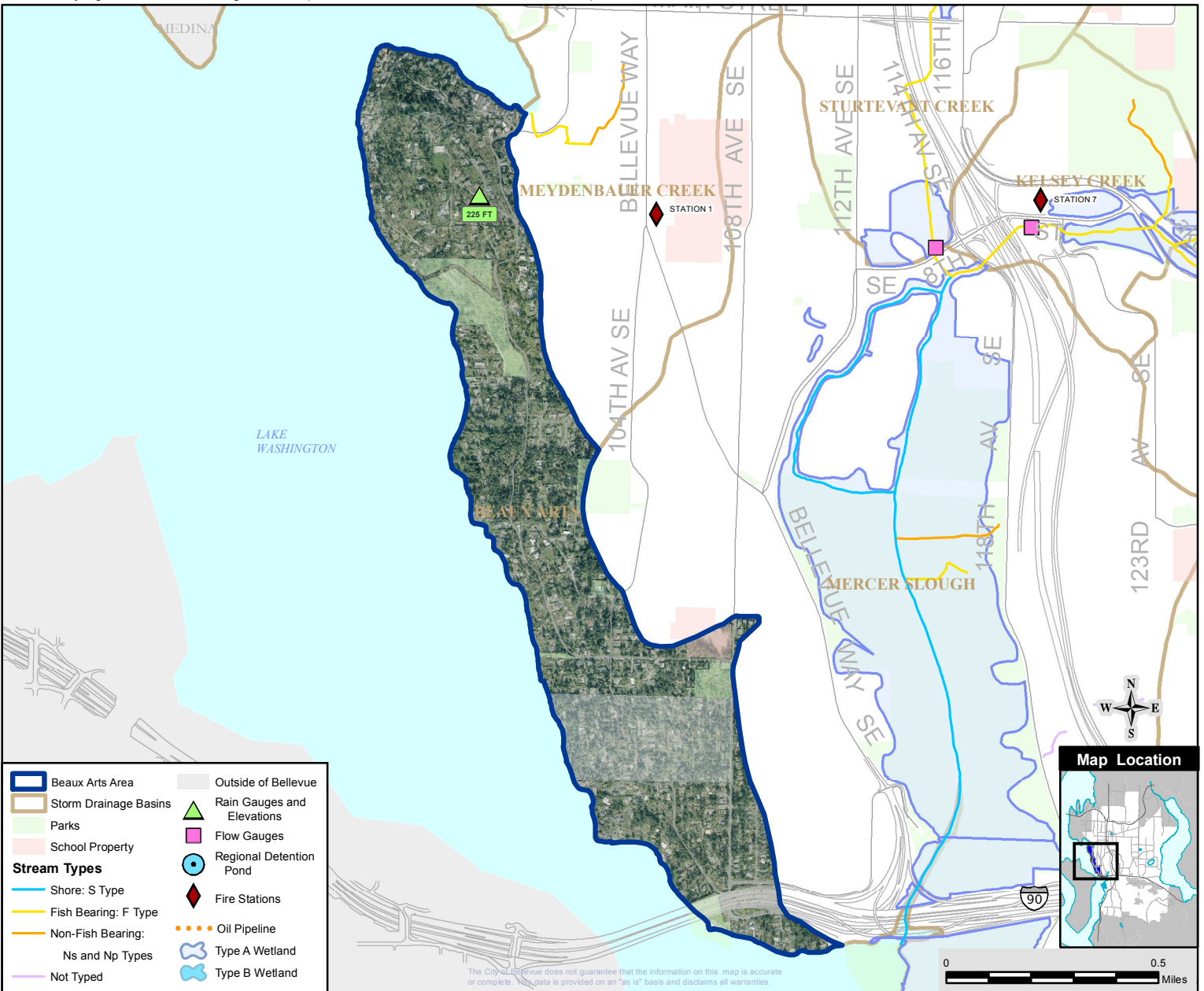
City Basin Population (2000): 1,520 (1.4% of the City)
 Basin Population Density: 2,732 People/Square Mile
 Number 10 of 26 Basins (One is the lowest density)

LAND USE (within Bellevue city limits)

Public Right of Way:	14.31%	59.92 Acres
Institutional/Government:	2.19%	8.0 Acres
Multi-Family Residential:	0.19%	0.7 Acres
Open Space/Park:	5.33%	19.5 Acres
Single Family Residential:	66.74%	244.0 Acres

LAND COVER

Impervious:	34%
Tree Canopy:	53%
Impervious in 100 Ft Stream Buffer:	NA
Tree Canopy in 100 Ft Stream Buffer:	NA



The City of Bellevue does not guarantee that the information on this map is accurate or complete. The data is provided on an "as is" basis and disclaims all warranties.



Clyde Beach Area

Lake Washington Watershed (WRIA 8)

LAND CHARACTERISTICS

Basin Area: 292 Total Acres (1% of the City)
 Drainage Jurisdiction(s):
 219.5 Acres - in Bellevue
 40.4 Acres - in Clyde Hill
 32.2 Acres - in Medina

Highest Elevation: 362 Ft
 Lowest Elevation: 18 Ft

Total Length of Open Channel: 0 Ft
 Total Length of Storm Drainage Pipes: 35,932 Ft
 Built Rain Storage Volume per Acre of Impervious Surface:
 Less than 0.5 Inches

SALMON PRESENT in BASIN

Lake only: Chinook*+, Coho+, Sockeye
 Rainbow & cutthroat trout (Lake only)
 Steelhead (Lake only)

* Listed Federal Endangered Species
 + City Species of Local Importance (Bellevue Land Use Code 20.25H.150A)

POPULATION

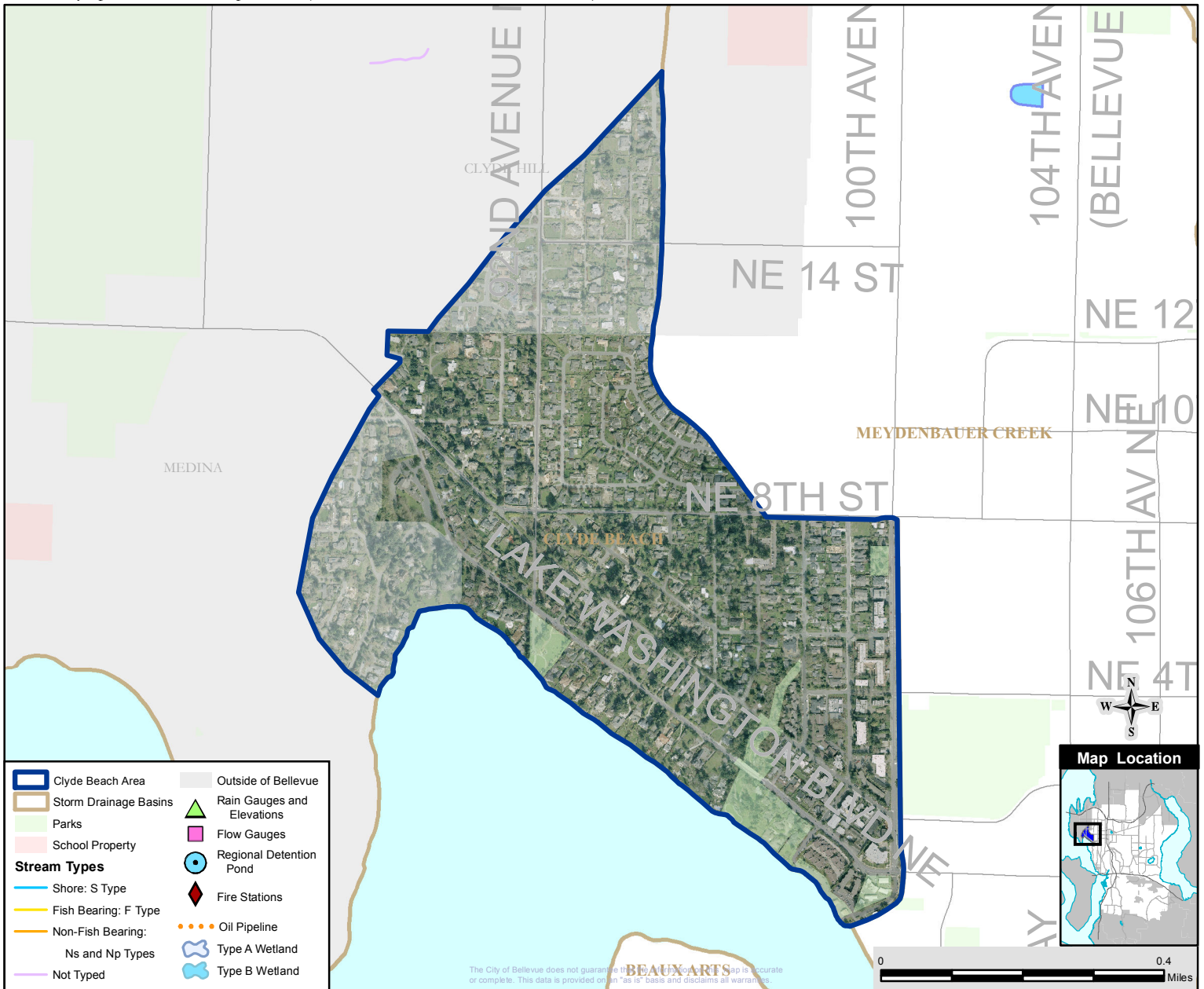
City Basin Population (2000): 1,668 (1.5% of the City)
 Basin Population Density: 4,293 People/Square Mile
 Number 20 of 26 Basins (One is the lowest density)

LAND USE (within Bellevue city limits)

Public Right of Way:	17.42%	50.95 Acres
Commercial/Office:	0.66%	1.5 Acres
Institutional/Government:	3.12%	6.9 Acres
Mixed Use/Misc:	1.93%	4.2 Acres
Multi-Family Residential:	8.47%	18.6 Acres
Open Space/Park:	1.91%	4.2 Acres
Single Family Residential:	58.33%	128.1 Acres

LAND COVER

Impervious:	47%
Tree Canopy:	31%
Impervious in 100 Ft Stream Buffer:	NA
Tree Canopy in 100 Ft Stream Buffer:	NA



The City of Bellevue does not guarantee the accuracy of this map. The map is accurate or complete. This data is provided on an "as is" basis and disclaims all warranties.



Coal Creek Basin

Lake Washington Watershed (WRIA 8)
State Stream #08-0268

LAND CHARACTERISTICS

Basin Area: 3,990 Total Acres (11% of the City)
 Drainage Jurisdiction(s):
 2,329.1 Acres - in Bellevue
 1,128.3 Acres - in King County
 532.1 Acres - in Newcastle

Highest Elevation: 1,561 Ft
 Lowest Elevation: 18 Ft

Total Length of Open Channel: 97,099 Ft
 Total Length of Storm Drainage Pipes: 266,341 Ft
 Built Rain Storage Volume per Acre of Impervious Surface:
 Less than 0.5 Inches

SALMON PRESENT in BASIN

Chinook*+
 Rainbow & cutthroat trout
 Coho+

Sockeye
 Steelhead

* Listed Federal Endangered Species
 + City Species of Local Importance (Bellevue Land Use Code 20.25H.150A)

POPULATION

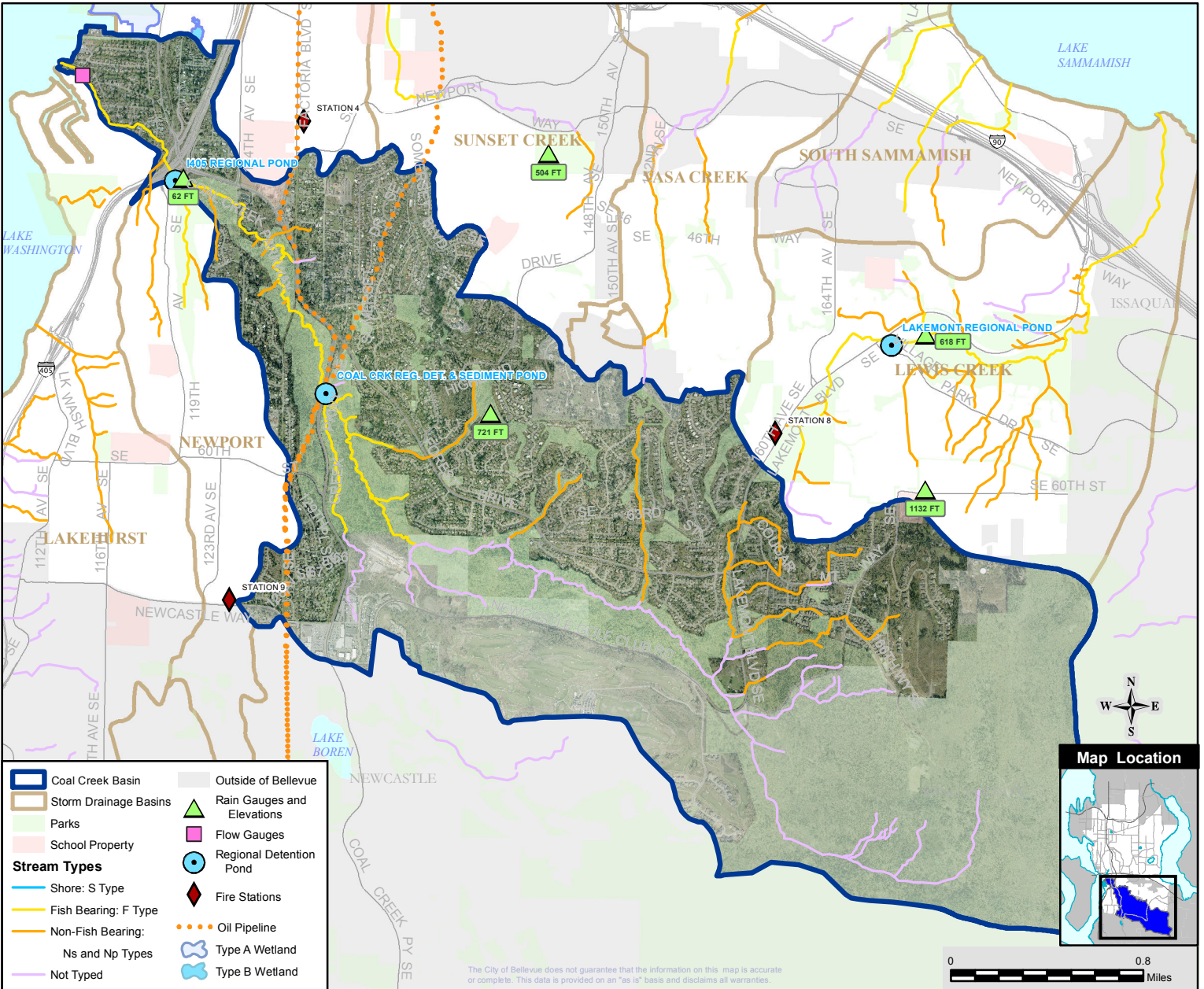
City Basin Population (2000): 10,144 (9.1% of the City)
 Basin Population Density: 1,852 People/Square Mile
 Number 3 of 26 Basins (One is the lowest density)

LAND USE (within Bellevue city limits)

Public Right of Way:	9.16%	365.38 Acres
Commercial/Office:	0.03%	0.6 Acres
Industrial:	0.01%	0.3 Acres
Institutional/Government:	3.06%	66.8 Acres
Mixed Use/Misc:	3.77%	82.2 Acres
Multi-Family Residential:	1.44%	31.4 Acres
Open Space/Park:	10.89%	237.7 Acres
Single Family Residential:	50.14%	1,093.9 Acres

LAND COVER

Impervious:	20%
Tree Canopy:	58%
Impervious in 100 Ft Stream Buffer:	8%
Tree Canopy in 100 Ft Stream Buffer:	85%



The City of Bellevue does not guarantee that the information on this map is accurate or complete. This data is provided on an "as is" basis and disclaims all warranties.



East Creek Basin

Lake Washington Watershed (WRIA 8)

LAND CHARACTERISTICS

Basin Area: 462 Total Acres (2% of the City)
 Drainage Jurisdiction(s):
 461.6 Acres - in Bellevue

Highest Elevation: 435 Ft
 Lowest Elevation: 49 Ft

Total Length of Open Channel: 8,866 Ft
 Total Length of Storm Drainage Pipes: 40,913 Ft
 Built Rain Storage Volume per Acre of Impervious Surface:
 1.1 Inches

SALMON PRESENT in BASIN

Chinook*+
 Cutthroat trout
 Coho+

Sockeye

* Listed Federal Endangered Species
 + City Species of Local Importance (Bellevue Land Use Code 20.25H.150A)

POPULATION

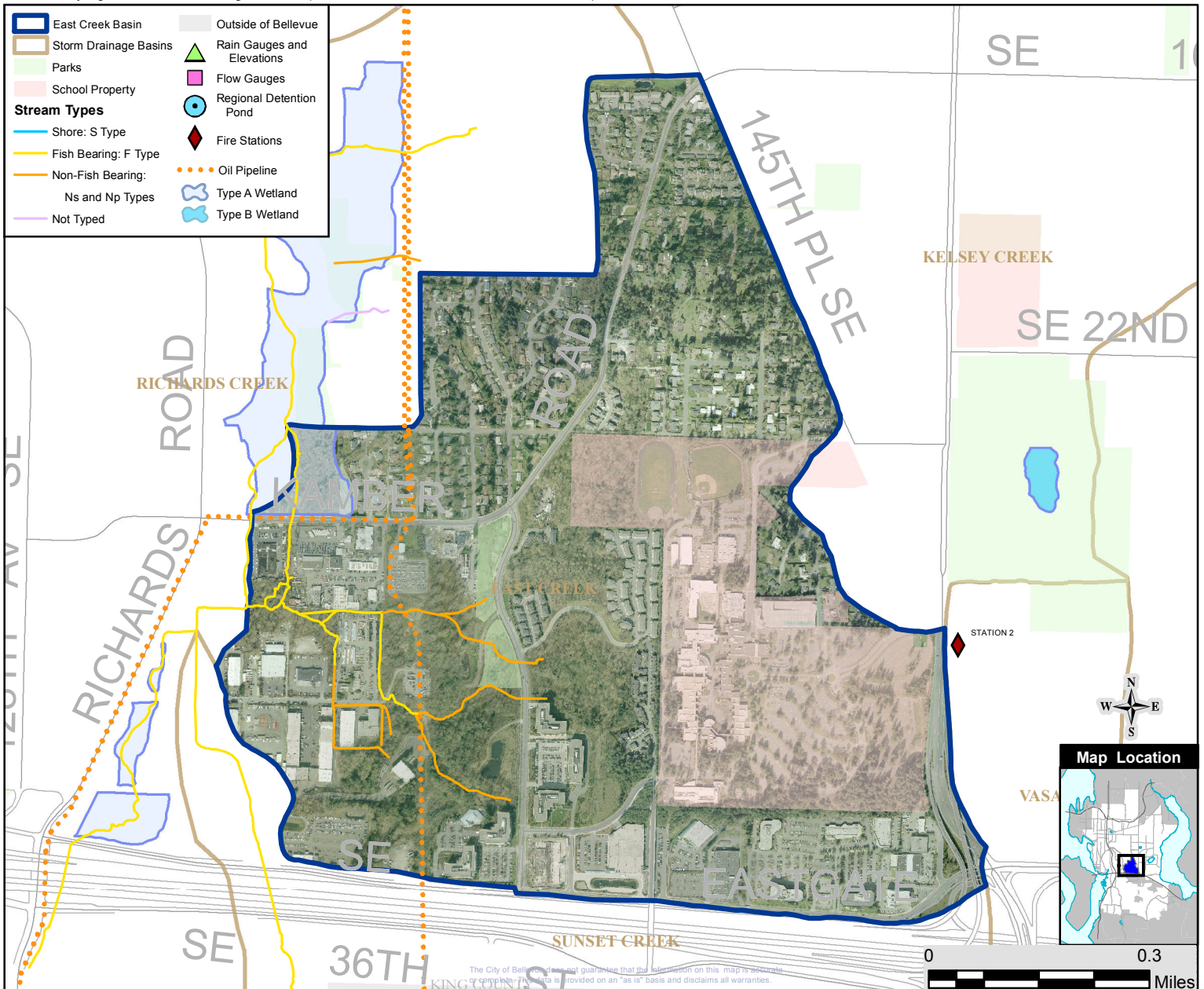
City Basin Population (2000): 1,498 (1.3% of the City)
 Basin Population Density: 2,076 People/Square Mile
 Number 6 of 26 Basins (One is the lowest density)

LAND USE (within Bellevue city limits)

Public Right of Way:	10.87%	10.87 Acres
Commercial/Office:	12.70%	58.6 Acres
Industrial:	6.64%	30.7 Acres
Institutional/Government:	20.31%	93.8 Acres
Mixed Use/Misc:	11.37%	52.5 Acres
Multi-Family Residential:	6.03%	27.8 Acres
Open Space/Park:	0.47%	2.2 Acres
Single Family Residential:	20.79%	96.0 Acres

LAND COVER

Impervious:	48%
Tree Canopy:	35%
Impervious in 100 Ft Stream Buffer:	29%
Tree Canopy in 100 Ft Stream Buffer:	65%





Goff Creek Basin

Lake Washington Watershed (WRIA 8)

LAND CHARACTERISTICS

Basin Area: 674 Total Acres (2% of the City)
 Drainage Jurisdiction(s):
 508.0 Acres - in Bellevue
 162.6 Acres - in King County
 3.8 Acres - in Kirkland

Highest Elevation: 541 Ft
 Lowest Elevation: 111 Ft

Total Length of Open Channel: 10,164 Ft
 Total Length of Storm Drainage Pipes: 45,962 Ft
 Built Rain Storage Volume per Acre of Impervious Surface:
 0.7 Inches

SALMON PRESENT in BASIN

Chinook*+
 Rainbow & cutthroat trout
 Coho+

Sockeye

* Listed Federal Endangered Species
 + City Species of Local Importance (Bellevue Land Use Code 20.25H.150A)

POPULATION

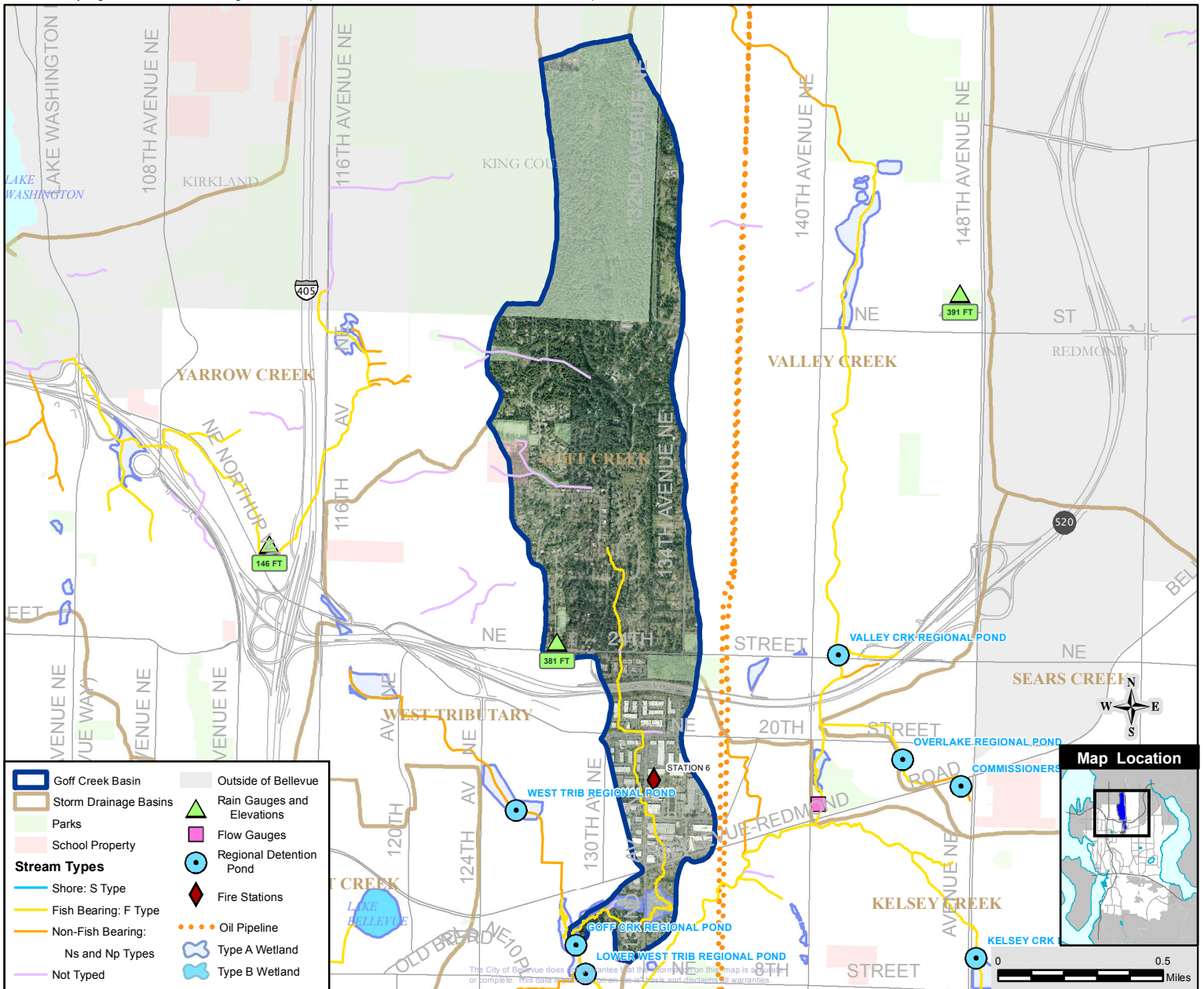
City Basin Population (2000): 1,675 (1.5% of the City)
 Basin Population Density: 1,599 People/Square Mile
 Number 1 of 26 Basins (One is the lowest density)

LAND USE (within Bellevue city limits)

Public Right of Way:	10.77%	72.63 Acres
Commercial/Office:	7.07%	35.9 Acres
Industrial:	2.63%	13.4 Acres
Institutional/Government:	1.24%	6.3 Acres
Mixed Use/Misc:	6.05%	30.7 Acres
Multi-Family Residential:	0.26%	1.3 Acres
Open Space/Park:	3.06%	15.6 Acres
Single Family Residential:	59.98%	304.7 Acres

LAND COVER

Impervious:	30%
Tree Canopy:	59%
Impervious in 100 Ft Stream Buffer:	35%
Tree Canopy in 100 Ft Stream Buffer:	55%





Kelsey Creek Basin

Lake Washington Watershed (WRIA 8)
State Stream #08-0259

LAND CHARACTERISTICS

Basin Area: 2,822 Total Acres (14% of the City)
Drainage Jurisdiction(s):
2,822.4 Acres - in Bellevue

Highest Elevation: 449 Ft
Lowest Elevation: 19 Ft

Total Length of Open Channel: 54,606 Ft
Total Length of Storm Drainage Pipes: 264,467 Ft
Built Rain Storage Volume per Acre of Impervious Surface:
1.2 Inches

SALMON PRESENT in BASIN

Chinook*+	Cutthroat trout
Chum	Sockeye
Coho+	

* Listed Federal Endangered Species
+ City Species of Local Importance (Bellevue Land Use Code 20.25H.150A)

POPULATION

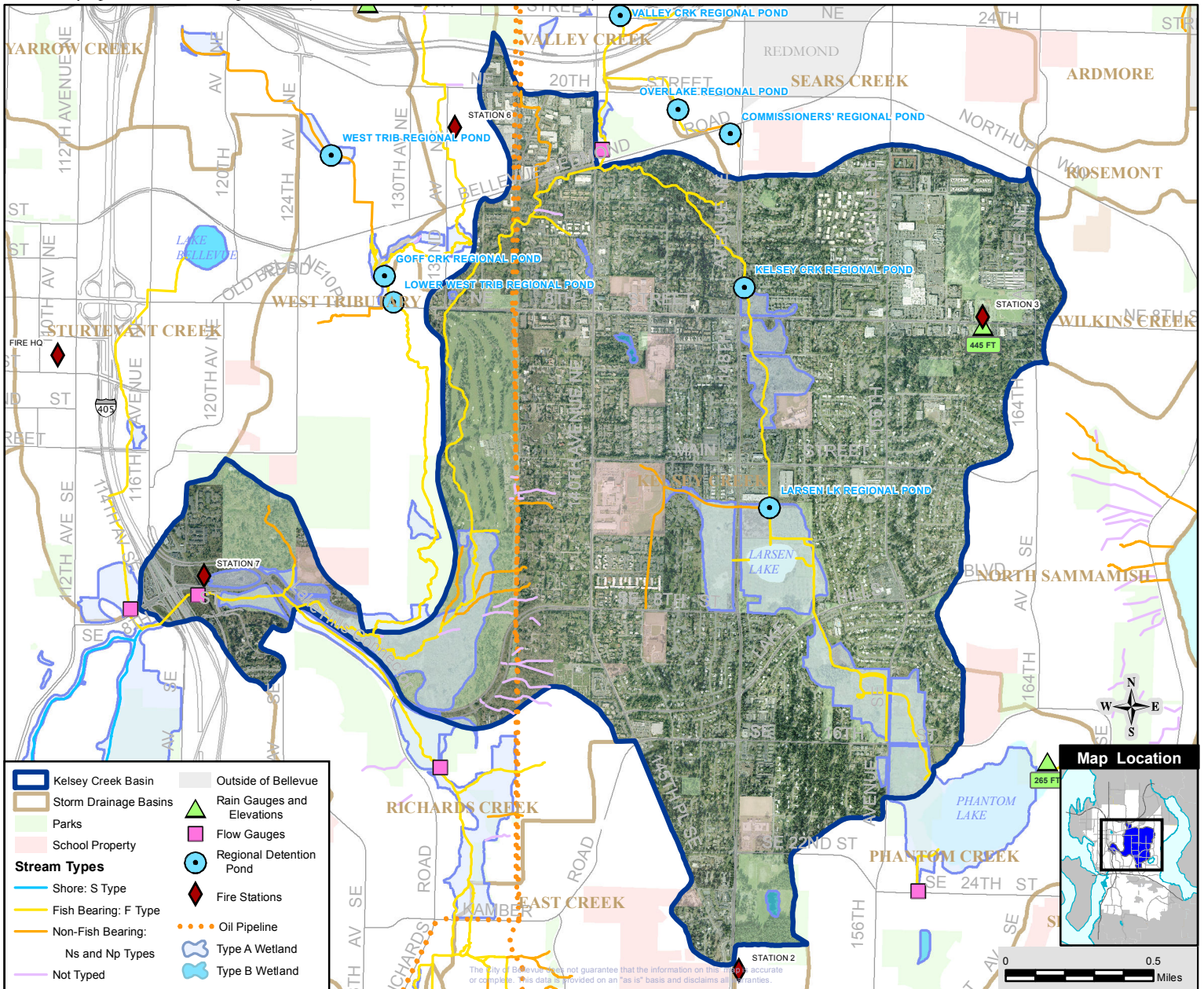
City Basin Population (2000): 22,494 (20.1% of the City)
Basin Population Density: 5,101 People/Square Mile
Number 24 of 26 Basins (One is the lowest density)

LAND USE (within Bellevue city limits)

Public Right of Way:	14.89%	420.32 Acres
Commercial/Office:	6.18%	174.4 Acres
Industrial:	0.86%	24.4 Acres
Institutional/Government:	6.24%	176.2 Acres
Mixed Use/Misc:	3.42%	96.5 Acres
Multi-Family Residential:	13.34%	376.5 Acres
Open Space/Park:	16.75%	472.9 Acres
Single Family Residential:	32.92%	929.1 Acres

LAND COVER

Impervious:	40%
Tree Canopy:	33%
Impervious in 100 Ft Stream Buffer:	17%
Tree Canopy in 100 Ft Stream Buffer:	55%





Lakehurst Area

Lake Washington Watershed (WRIA 8)
State Stream #08-0281

LAND CHARACTERISTICS

Basin Area: 1,284 Total Acres (3% of the City)
 Drainage Jurisdiction(s):
 651.0 Acres - in Bellevue
 23.2 Acres - in King County
 445.5 Acres - in Newcastle
 163.6 Acres - in Renton

Highest Elevation: 568 Ft
 Lowest Elevation: 17 Ft

Total Length of Open Channel: 34,651 Ft
 Total Length of Storm Drainage Pipes: 57,587 Ft
 Built Rain Storage Volume per Acre of Impervious Surface:
 Less than 0.5 Inches

SALMON PRESENT in BASIN

Lake only: Chinook*, Coho+, Sockeye
 Rainbow & cutthroat trout (Lake only)
 Steelhead (Lake only)

* Listed Federal Endangered Species
 + City Species of Local Importance (Bellevue Land Use Code 20.25H.150A)

POPULATION

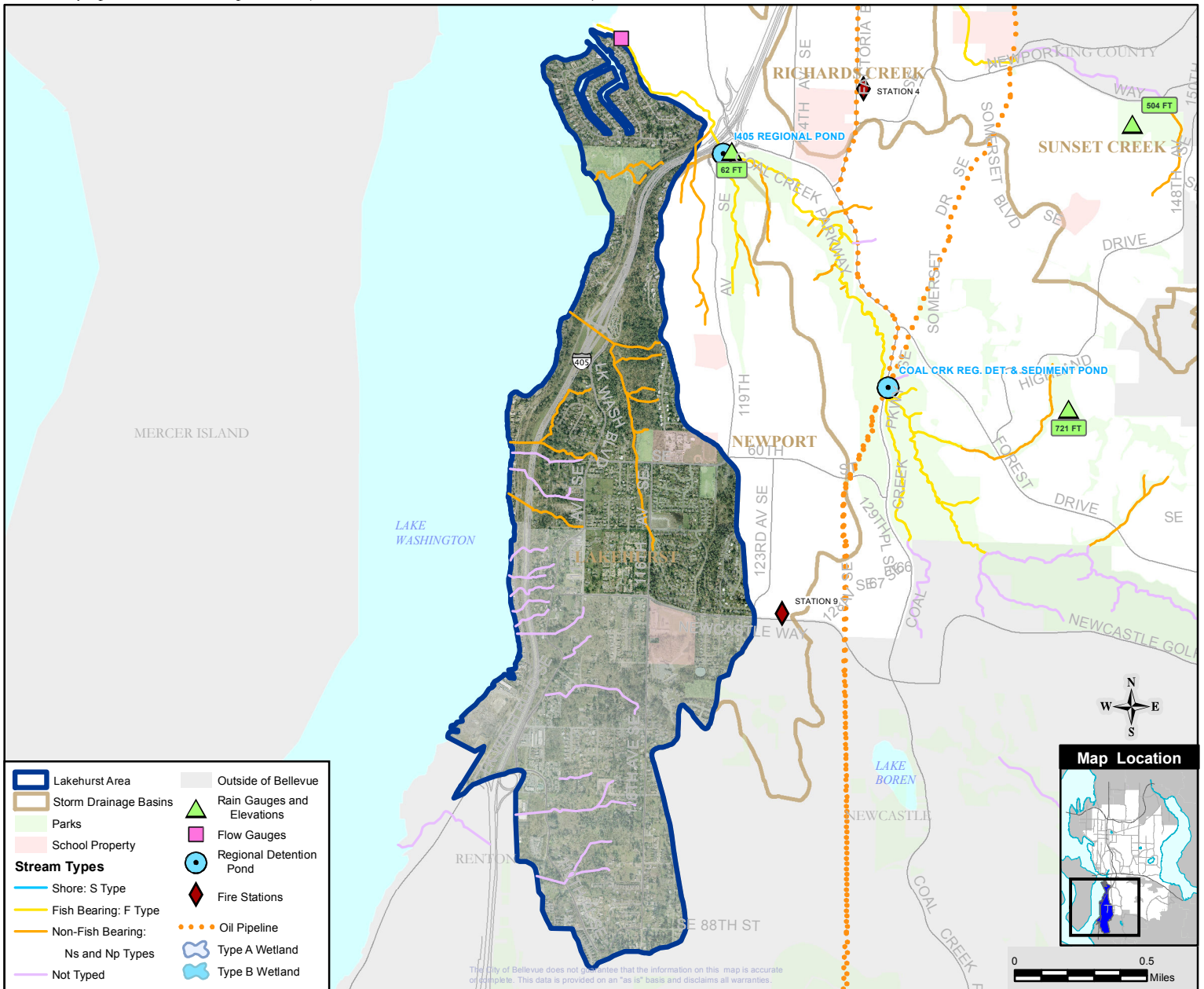
City Basin Population (2000): 2,828 (2.5% of the City)
 Basin Population Density: 2,371 People/Square Mile
 Number 9 of 26 Basins (One is the lowest density)

LAND USE (within Bellevue city limits)

Public Right of Way:	12.58%	161.45 Acres
Industrial:	0.42%	2.7 Acres
Institutional/Government:	3.47%	22.6 Acres
Multi-Family Residential:	0.12%	0.8 Acres
Commercial/Office:	0.08%	0.5 Acres
Open Space/Park:	4.35%	28.3 Acres
Single Family Residential:	44.38%	288.9 Acres
Mixed Use/Misc:	10.56%	68.8 Acres

LAND COVER

Impervious:	33%
Tree Canopy:	37%
Impervious in 100 Ft Stream Buffer:	21%
Tree Canopy in 100 Ft Stream Buffer:	62%



The City of Bellevue does not guarantee that the information on this map is accurate or complete. This data is provided on an "as is" basis and disclaims all warranties.



Lewis Creek Basin

Lake Washington Watershed (WRIA 8)
State Stream #08-0162

LAND CHARACTERISTICS

Basin Area: 1,451 Total Acres (5% of the City)
 Drainage Jurisdiction(s):
 1,003.6 Acres - in Bellevue
 355.1 Acres - in Issaquah
 91.4 Acres - in King County

Highest Elevation: 1,425 Ft
 Lowest Elevation: 30 Ft

Total Length of Open Channel: 50,666 Ft
 Total Length of Storm Drainage Pipes: 118,442 Ft
 Built Rain Storage Volume per Acre of Impervious Surface:
 1.2 Inches

SALMON PRESENT in BASIN

Chinook*+	Sockeye
Rainbow & cutthroat trout	Kokanee+
Coho+	Steelhead (Lake only)

* Listed Federal Endangered Species
 + City Species of Local Importance (Bellevue Land Use Code 20.25H.150A)

POPULATION

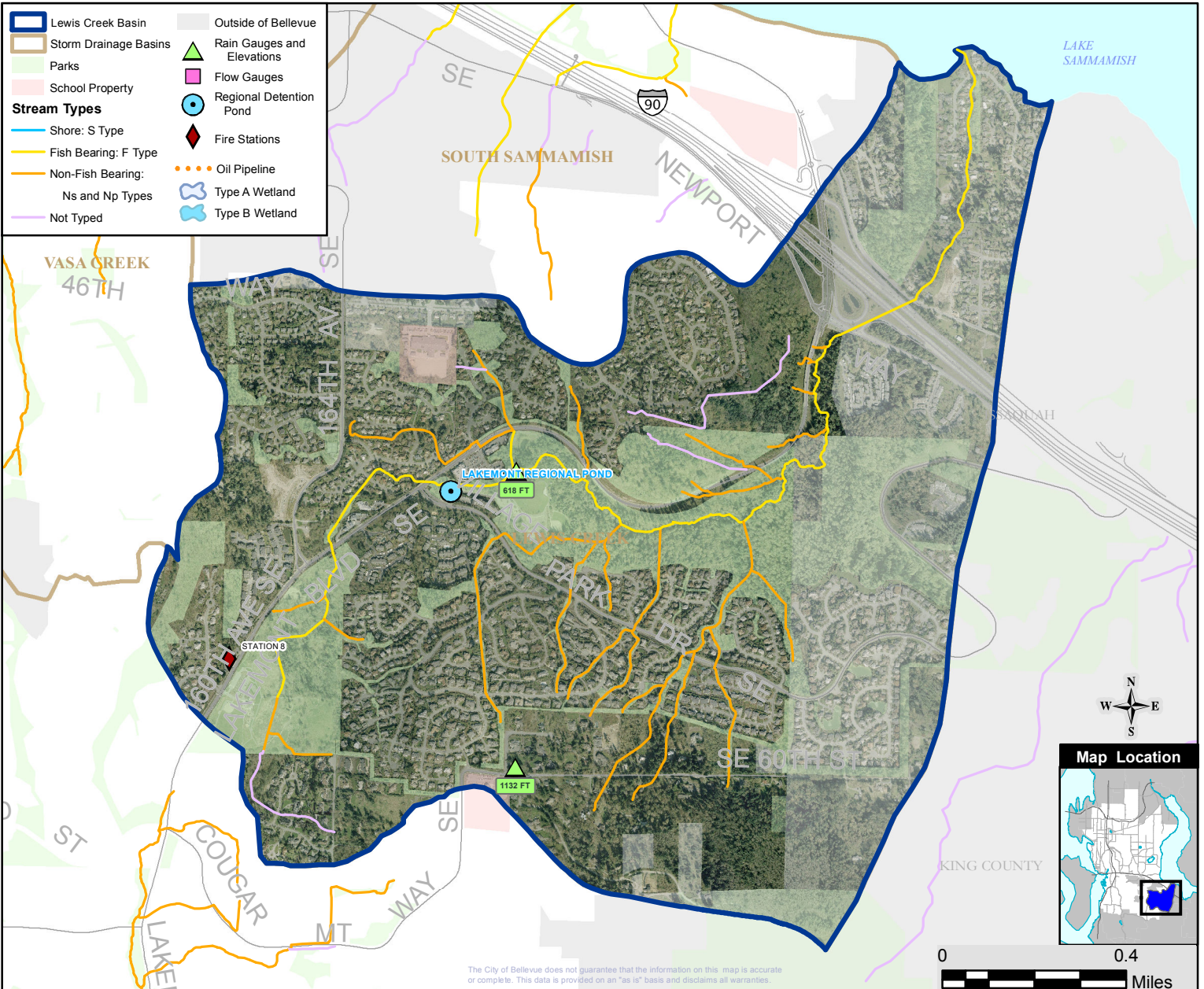
City Basin Population (2000): 4,886 (4.4% of the City)
 Basin Population Density: 2,995 People/Square Mile
 Number 12 of 26 Basins (One is the lowest density)

LAND USE (within Bellevue city limits)

Public Right of Way:	10.15%	147.26 Acres
Commercial/Office:	3.36%	33.7 Acres
Institutional/Government:	0.86%	8.6 Acres
Multi-Family Residential:	4.44%	44.6 Acres
Mixed Use/Misc:	9.33%	93.7 Acres
Open Space/Park:	3.28%	32.9 Acres
Single Family Residential:	41.86%	420.1 Acres

LAND COVER

Impervious:	29%
Tree Canopy:	49%
Impervious in 100 Ft Stream Buffer:	17%
Tree Canopy in 100 Ft Stream Buffer:	69%



The City of Bellevue does not guarantee that the information on this map is accurate or complete. This data is provided on an "as is" basis and disclaims all warranties.



Mercer Slough Basin

Lake Washington Watershed (WRIA 8)
State Stream #08-0259

LAND CHARACTERISTICS

Basin Area: 1,327 Total Acres (6% of the City)
Drainage Jurisdiction(s):
1,327.0 Acres - in Bellevue

Highest Elevation: 339 Ft
Lowest Elevation: 16 Ft

Total Length of Open Channel: 15,533 Ft
Total Length of Storm Drainage Pipes: 96,145 Ft
Built Rain Storage Volume per Acre of Impervious Surface:
Less than 0.5 Inches

SALMON PRESENT in BASIN

Chinook*+	Sockeye
Rainbow & cutthroat trout	Steelhead (Lake only)
Coho+	

* Listed Federal Endangered Species
+ City Species of Local Importance (Bellevue Land Use Code 20.25H.150A)

POPULATION

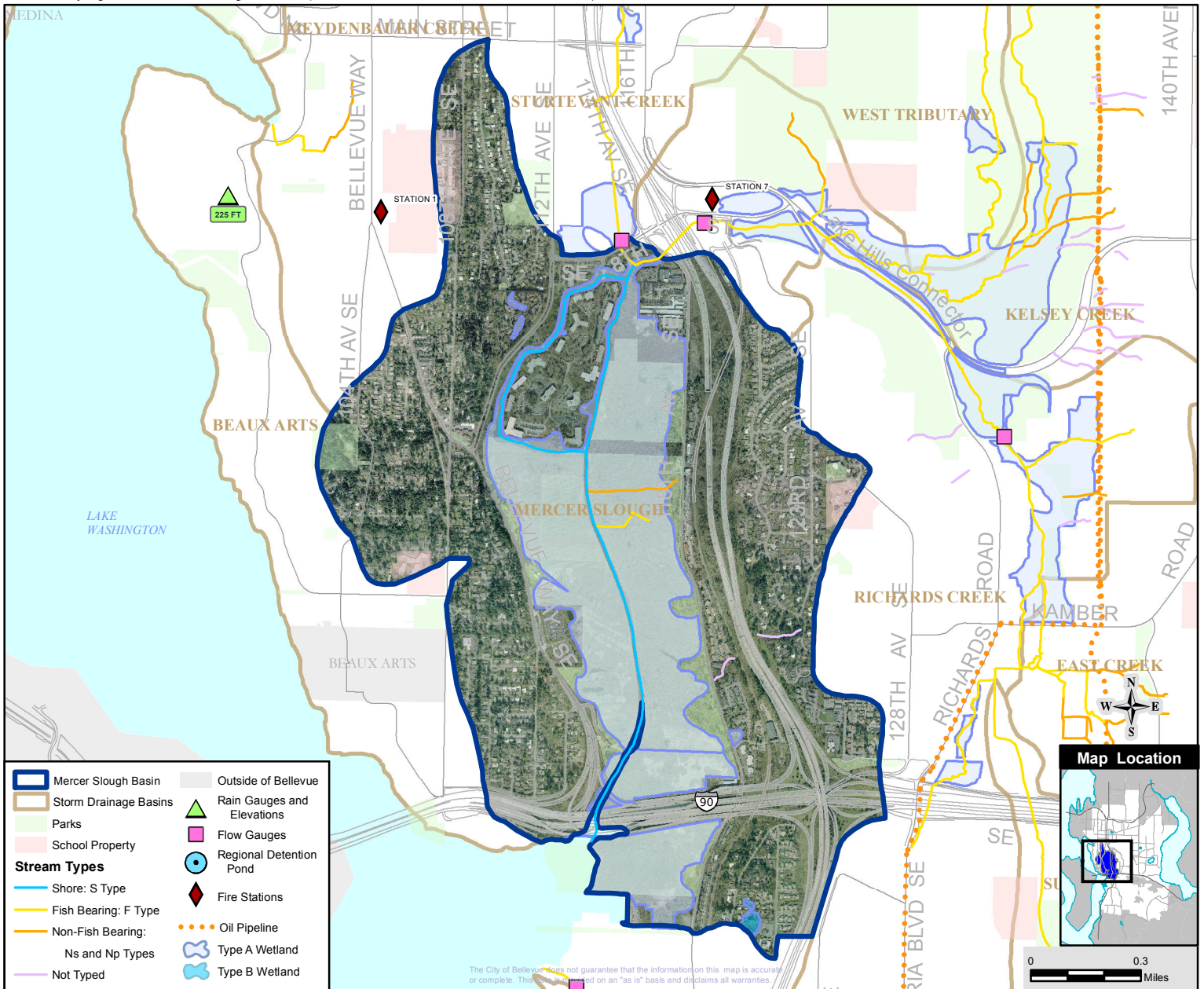
City Basin Population (2000): 4,546 (4.1% of the City)
Basin Population Density: 2,192 People/Square Mile
Number 8 of 26 Basins (One is the lowest density)

LAND USE (within Bellevue city limits)

Public Right of Way:	27.08%	359.33 Acres
Commercial/Office:	5.87%	77.9 Acres
Industrial:	2.86%	38.0 Acres
Institutional/Government:	4.55%	60.3 Acres
Mixed Use/Misc:	2.20%	29.2 Acres
Multi-Family Residential:	4.69%	62.2 Acres
Open Space/Park:	18.14%	240.7 Acres
Single Family Residential:	27.68%	367.4 Acres

LAND COVER

Impervious:	32%
Tree Canopy:	43%
Impervious in 100 Ft Stream Buffer:	7%
Tree Canopy in 100 Ft Stream Buffer:	53%





Meydenbauer Creek Basin

Lake Washington Watershed (WRIA 8)

State Stream #08-0258

LAND CHARACTERISTICS

Basin Area: 927 Total Acres (4% of the City)

Drainage Jurisdiction(s):
833.2 Acres - in Bellevue
94.2 Acres - in Clyde Hill

Highest Elevation: 391 Ft

Lowest Elevation: 18 Ft

Total Length of Open Channel: 1,773 Ft

Total Length of Storm Drainage Pipes: 142,906 Ft

Built Rain Storage Volume per Acre of Impervious Surface:
Less than 0.5 Inches

POPULATION

City Basin Population (2000): 6,700 (6.0% of the City)

Basin Population Density: 4,833 People/Square Mile

Number 23 of 26 Basins (One is the lowest density)

LAND USE (within Bellevue city limits)

Public Right of Way: 16.60% 153.95 Acres

Commercial/Office: 15.23% 126.9 Acres

Industrial: 0.20% 1.7 Acres

Institutional/Government: 5.67% 47.3 Acres

Mixed Use/Misc: 7.70% 64.2 Acres

Multi-Family Residential: 15.03% 125.2 Acres

Open Space/Park: 3.61% 30.1 Acres

Single Family Residential: 31.61% 263.4 Acres

SALMON PRESENT in BASIN

Chinook*+ (Lake only)

Coho+ (Lake only)

Cutthroat trout (Lake only)

Rainbow trout (Lake only)

Sockeye

LAND COVER

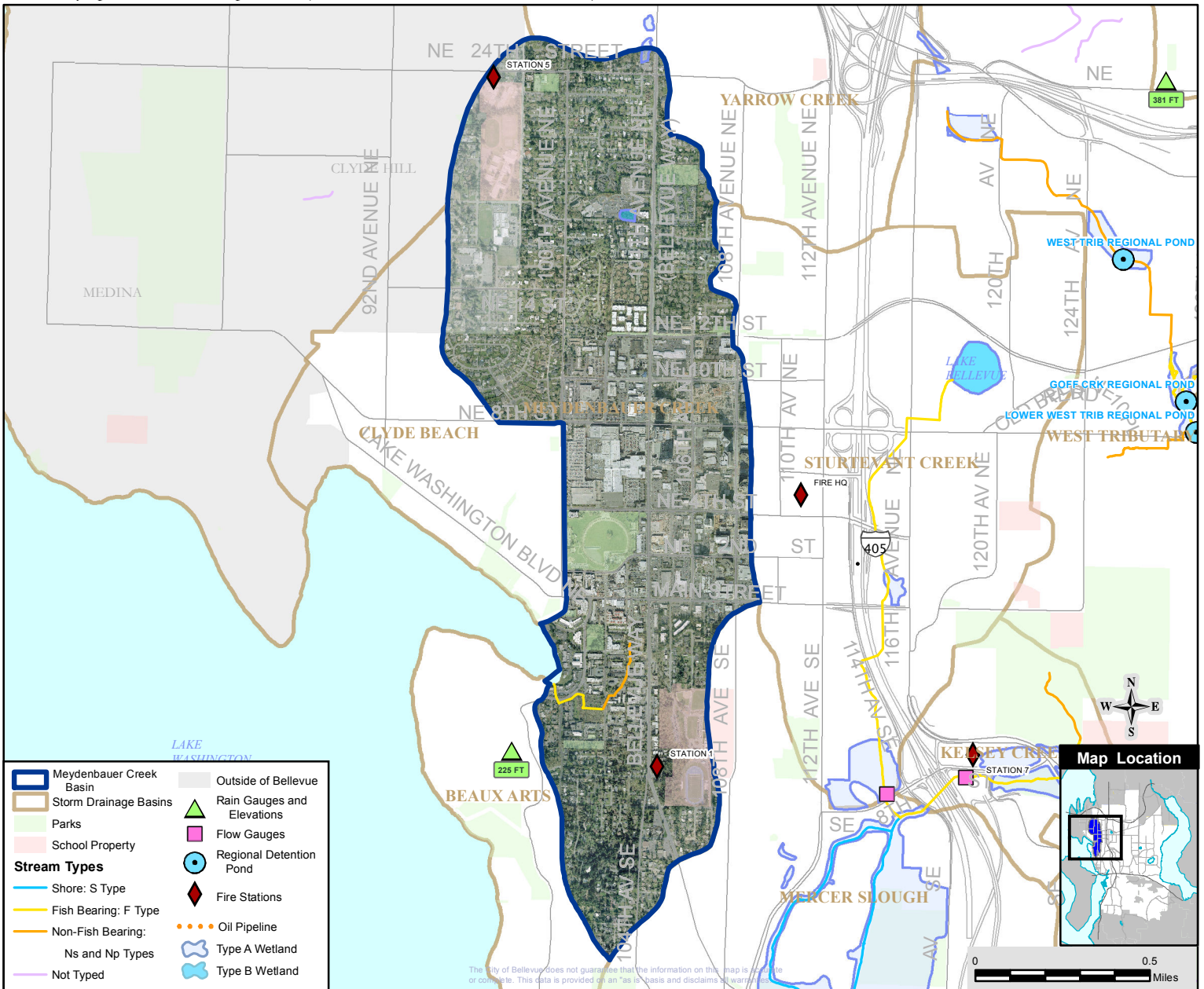
Impervious: 59%

Tree Canopy: 24%

Impervious in 100 Ft Stream Buffer: 36%

Tree Canopy in 100 Ft Stream Buffer: 44%

* Listed Federal Endangered Species
+ City Species of Local Importance (Bellevue Land Use Code 20.25H.150A)





Newport Area

Lake Washington Watershed (WRIA 8)
State Stream #08-0269

LAND CHARACTERISTICS

Basin Area: 573 Total Acres (2% of the City)
Drainage Jurisdiction(s):
469.8 Acres - in Bellevue
103.2 Acres - in Newcastle

Highest Elevation: 571 Ft
Lowest Elevation: 51 Ft

Total Length of Open Channel: 8,845 Ft
Total Length of Storm Drainage Pipes: 62,013 Ft
Built Rain Storage Volume per Acre of Impervious Surface:
Less than 0.5 Inches

SALMON PRESENT in BASIN

Coho+ (juveniles)
Cutthroat trout

+ City Species of Local Importance (Bellevue Land Use Code 20.25H.150A)

POPULATION

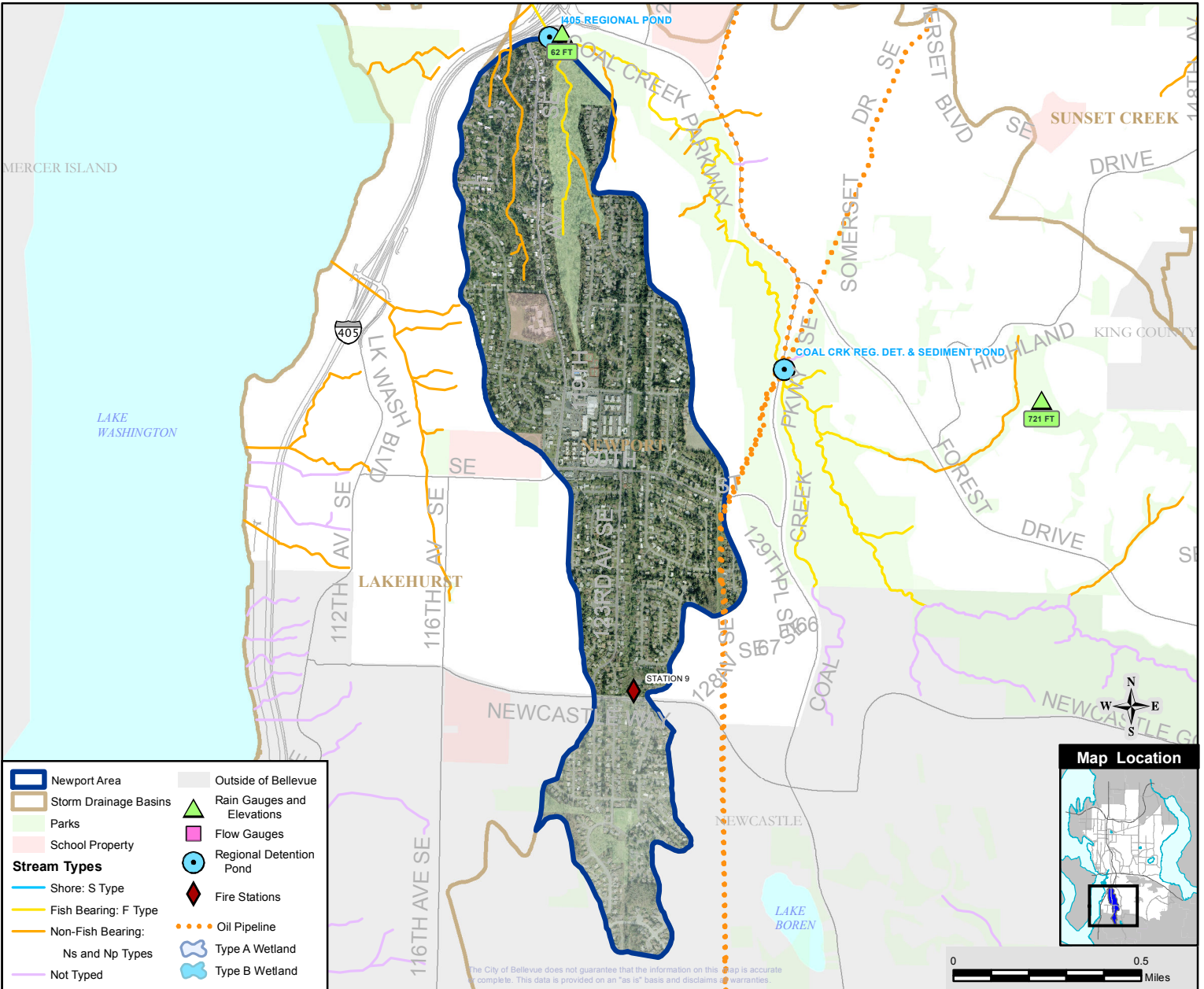
City Basin Population (2000): 3,588 (3.2% of the City)
Basin Population Density: 4,700 People/Square Mile
Number 22 of 26 Basins (One is the lowest density)

LAND USE (within Bellevue city limits)

Public Right of Way:	14.37%	82.38 Acres
Commercial/Office:	1.94%	9.1 Acres
Institutional/Government:	4.35%	20.5 Acres
Multi-Family Residential:	3.25%	15.3 Acres
Open Space/Park:	8.61%	40.5 Acres
Single Family Residential:	60.46%	284.1 Acres
Mixed Use/Misc:	0.32%	1.5 Acres

LAND COVER

Impervious:	39%
Tree Canopy:	30%
Impervious in 100 Ft Stream Buffer:	7%
Tree Canopy in 100 Ft Stream Buffer:	91%





North Sammamish Area

Lake Washington Watershed (WRIA 8)

LAND CHARACTERISTICS

Basin Area: 621 Total Acres (3% of the City)
 Drainage Jurisdiction(s):
 618.5 Acres - in Bellevue

Highest Elevation: 443 Ft
 Lowest Elevation: 30 Ft

Total Length of Open Channel: 19,713 Ft
 Total Length of Storm Drainage Pipes: 59,355 Ft
 Built Rain Storage Volume per Acre of Impervious Surface:
 Less than 0.5 Inches

SALMON PRESENT in BASIN

Lake only: Chinook*+, Coho+, Kokanee+, Sockeye
 Rainbow & cutthroat trout (Lake only)
 Steelhead (Lake only)

* Listed Federal Endangered Species
 + City Species of Local Importance (Bellevue Land Use Code 20.25H.150A)

POPULATION

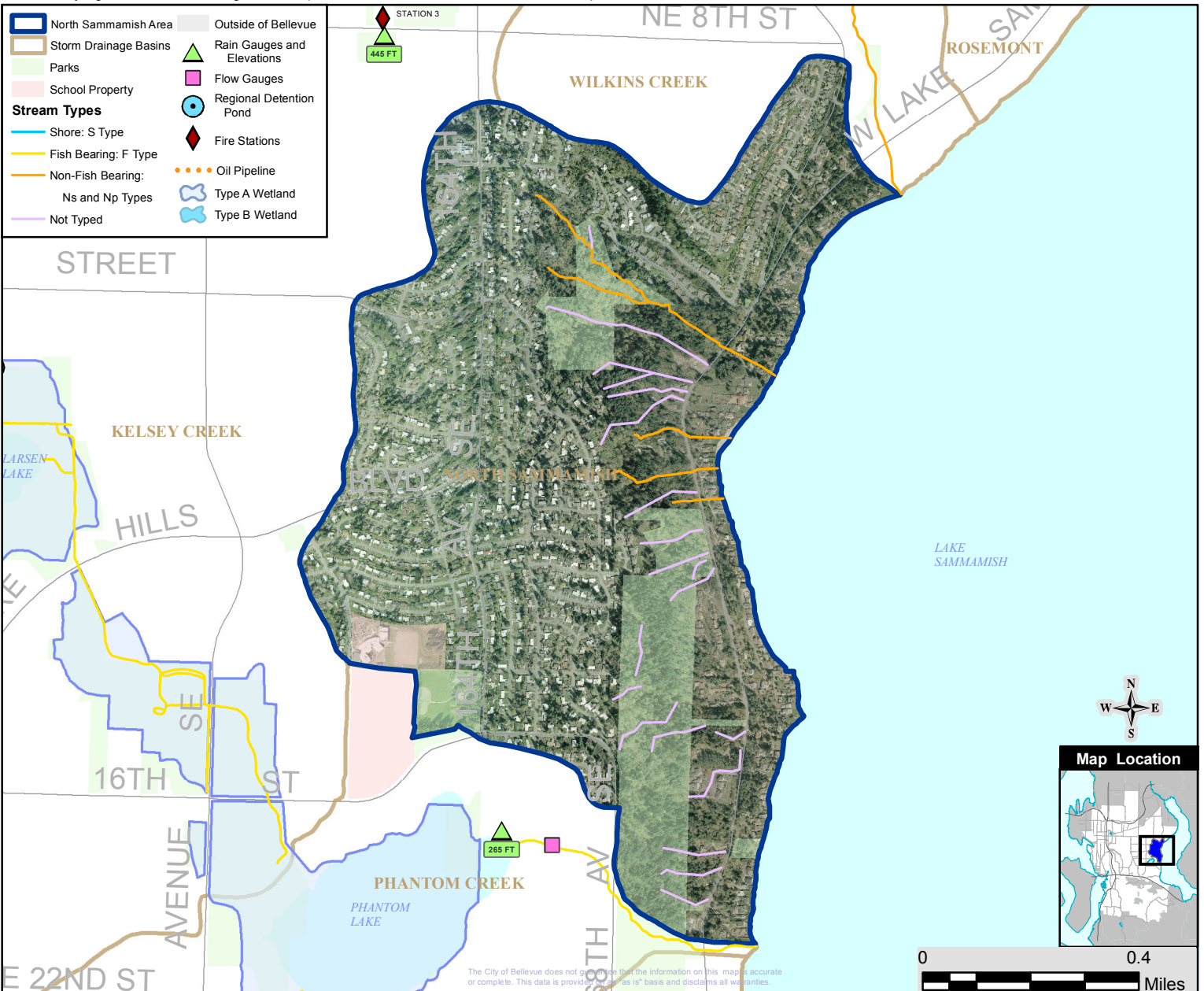
City Basin Population (2000): 3,789 (3.4% of the City)
 Basin Population Density: 3,916 People/Square Mile
 Number 16 of 26 Basins (One is the lowest density)

LAND USE (within Bellevue city limits)

Public Right of Way:	15.67%	97.25 Acres
Institutional/Government:	1.78%	11.0 Acres
Multi-Family Residential:	0.05%	0.3 Acres
Open Space/Park:	14.63%	90.5 Acres
Single Family Residential:	54.10%	334.6 Acres
Mixed Use/Misc:	5.70%	35.3 Acres

LAND COVER

Impervious:	32%
Tree Canopy:	46%
Impervious in 100 Ft Stream Buffer:	9%
Tree Canopy in 100 Ft Stream Buffer:	86%





Phantom Creek Basin

Lake Washington Watershed (WRIA 8)

State Stream #08-0154

LAND CHARACTERISTICS

Basin Area: 537 Total Acres (3% of the City)
Drainage Jurisdiction(s):
536.5 Acres - in Bellevue

Highest Elevation: 425 Ft
Lowest Elevation: 31 Ft

Total Length of Open Channel: 3,755 Ft
Total Length of Storm Drainage Pipes: 36,058 Ft
Built Rain Storage Volume per Acre of Impervious Surface:
Less than 0.5 Inches

SALMON PRESENT in BASIN

Lake Sammamish only: Chinook*+, Coho+ , Kokanee+, Sockeye
Rainbow & cutthroat trout
Steelhead (Lake Sammamish only)

* Listed Federal Endangered Species
+ City Species of Local Importance (Bellevue Land Use Code 20.25H.150A)

POPULATION

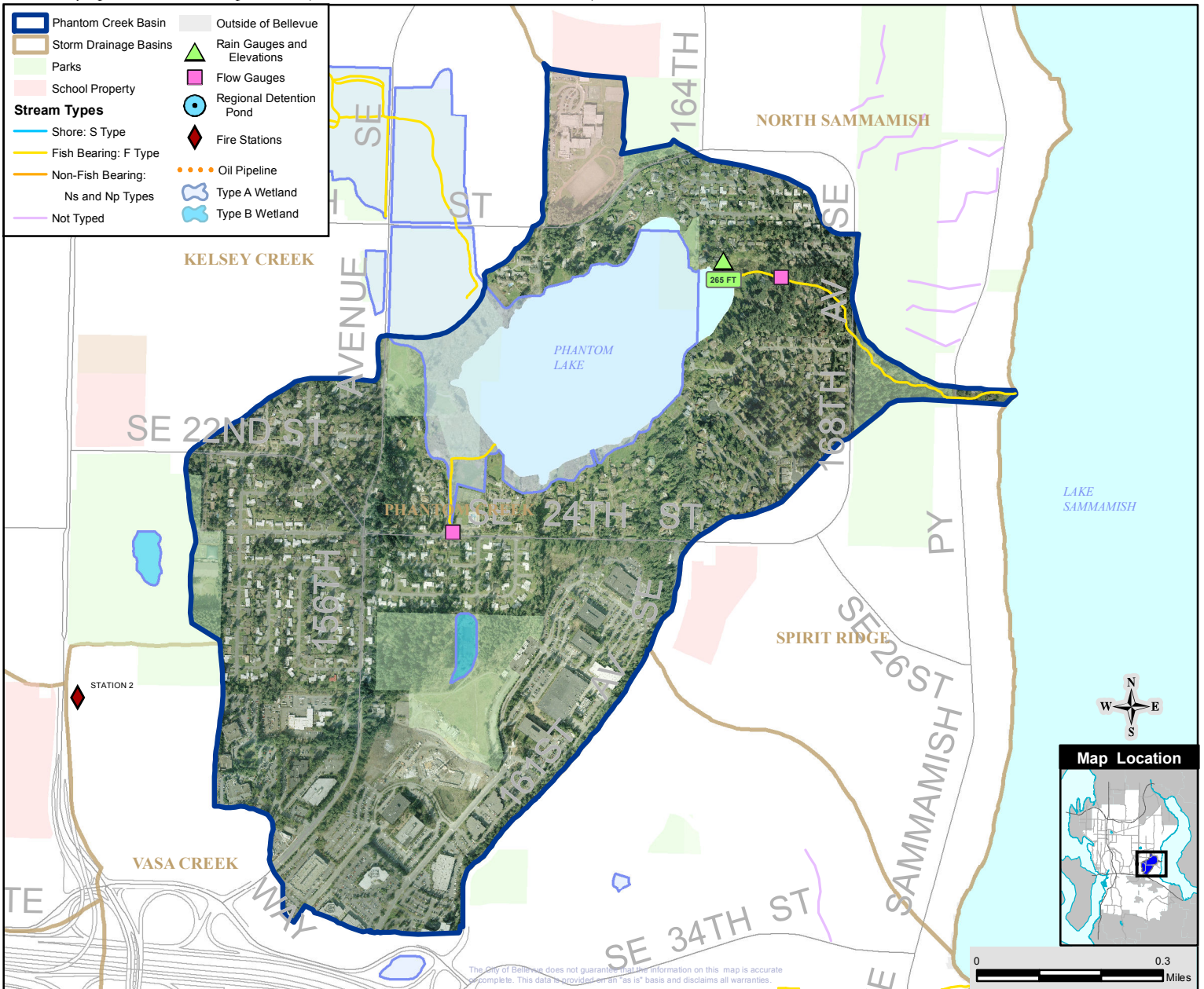
City Basin Population (2000): 1,606 (1.4% of the City)
Basin Population Density: 1,915 People/Square Mile
Number 5 of 26 Basins (One is the lowest density)

LAND USE (within Bellevue city limits)

Public Right of Way:	10.37%	55.66 Acres
Commercial/Office:	17.72%	95.1 Acres
Mixed Use/Misc:	0.70%	3.8 Acres
Industrial:	3.71%	19.9 Acres
Institutional/Government:	4.68%	25.1 Acres
Multi-Family Residential:	0.09%	0.5 Acres
Open Space/Park:	12.29%	66.0 Acres
Single Family Residential:	42.88%	230.1 Acres

LAND COVER

Impervious:	35%
Tree Canopy:	33%
Impervious in 100 Ft Stream Buffer:	17%
Tree Canopy in 100 Ft Stream Buffer:	64%





Richards Creek Basin

Lake Washington Watershed (WRIA 8)
State Stream #08-0261

LAND CHARACTERISTICS

Basin Area: 901 Total Acres (4% of the City)
Drainage Jurisdiction(s):
901.5 Acres - in Bellevue

Highest Elevation: 397 Ft
Lowest Elevation: 23 Ft

Total Length of Open Channel: 14,561 Ft
Total Length of Storm Drainage Pipes: 99,331 Ft
Built Rain Storage Volume per Acre of Impervious Surface:
Less than 0.5 Inches

SALMON PRESENT in BASIN

Chinook*+
Coho+
Cutthroat trout

Sockeye

* Listed Federal Endangered Species
+ City Species of Local Importance (Bellevue Land Use Code 20.25H.150A)

POPULATION

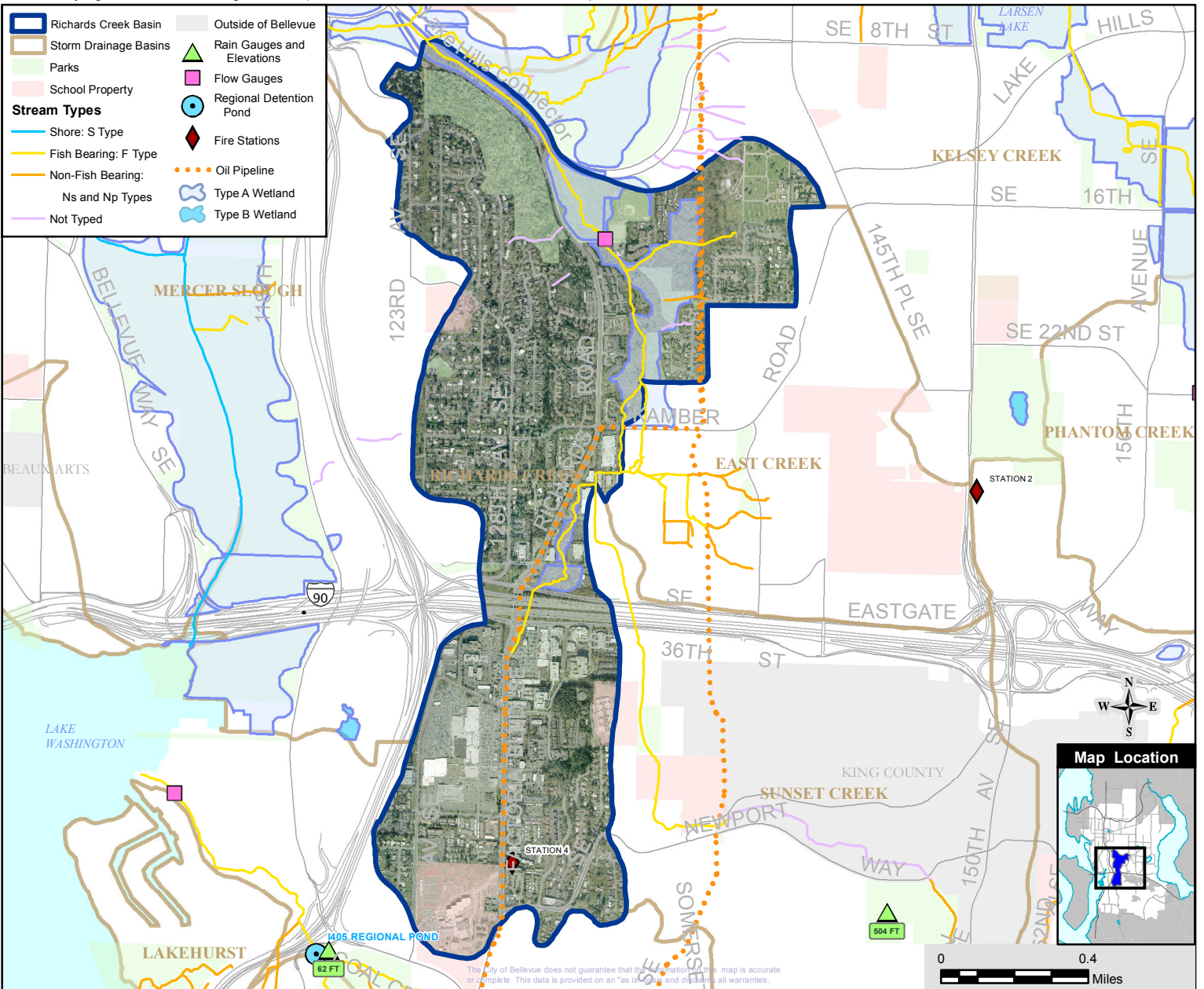
City Basin Population (2000): 5,660 (5.1% of the City)
Basin Population Density: 4,018 People/Square Mile
Number 17 of 26 Basins (One is the lowest density)

LAND USE (within Bellevue city limits)

Public Right of Way:	16.96%	152.88 Acres
Commercial/Office:	10.79%	97.2 Acres
Industrial:	1.63%	14.7 Acres
Institutional/Government:	10.59%	95.5 Acres
Mixed Use/Misc:	7.20%	64.9 Acres
Multi-Family Residential:	12.23%	110.3 Acres
Open Space/Park:	4.50%	40.6 Acres
Single Family Residential:	27.41%	247.1 Acres

LAND COVER

Impervious:	45%
Tree Canopy:	36%
Impervious in 100 Ft Stream Buffer:	22%
Tree Canopy in 100 Ft Stream Buffer:	62%





Rosemont Area

Lake Washington Watershed (WRIA 8)

LAND CHARACTERISTICS

Basin Area: 432 Total Acres (2% of the City)
 Drainage Jurisdiction(s):
 431.4 Acres - in Bellevue
 0.2 Acres - in Redmond

Highest Elevation: 444 Ft
 Lowest Elevation: 30 Ft

Total Length of Open Channel: 1,436 Ft
 Total Length of Storm Drainage Pipes: 47,399 Ft
 Built Rain Storage Volume per Acre of Impervious Surface:
 Less than 0.5 Inches

SALMON PRESENT in BASIN

Lake only: Chinook*+, Coho+ , Kokanee+, Sockeye
 Rainbow & cutthroat trout (Lake only)
 Steelhead (Lake only)

* Listed Federal Endangered Species
 + City Species of Local Importance (Bellevue Land Use Code 20.25H.150A)

POPULATION

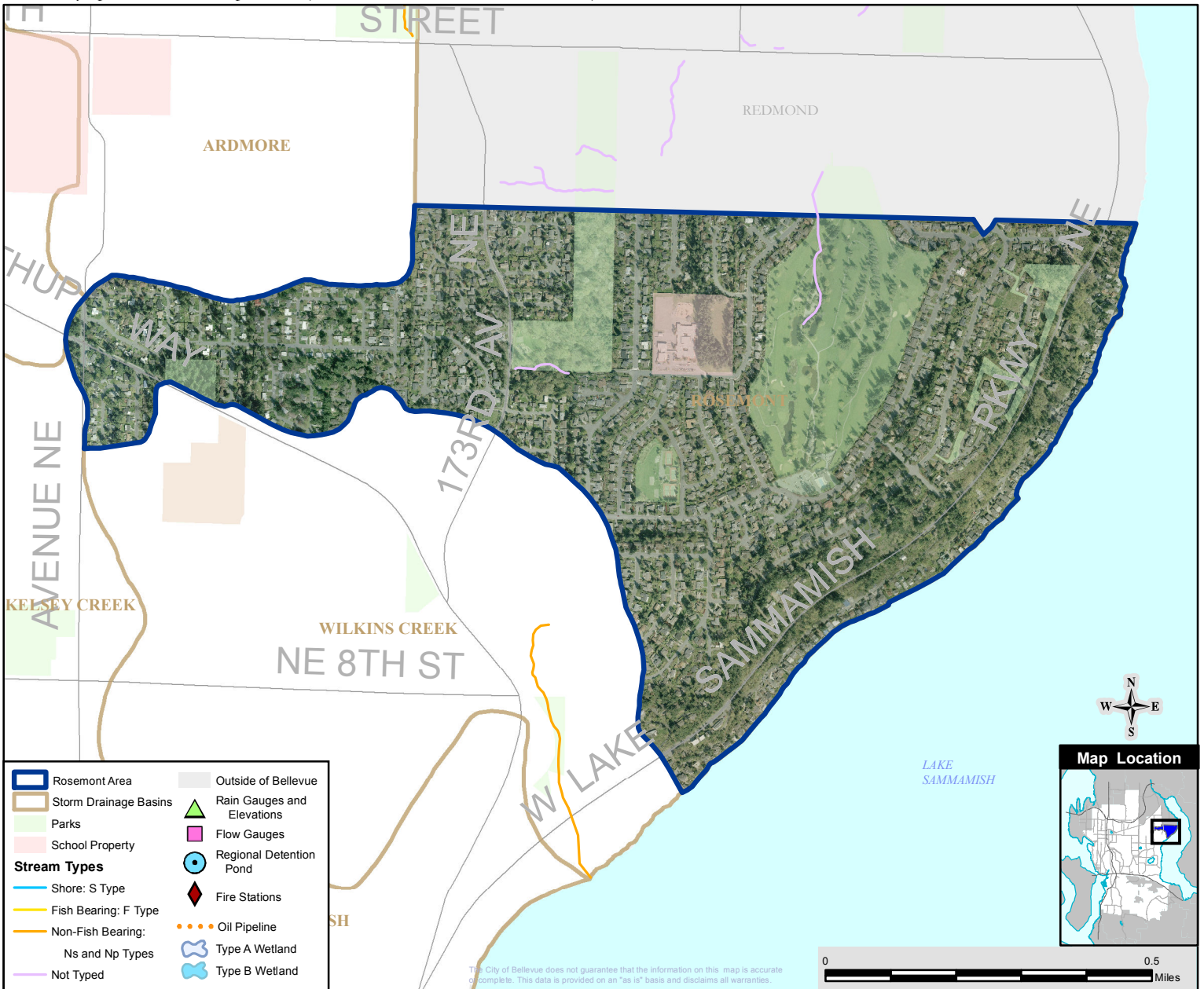
City Basin Population (2000): 2,939 (2.6% of the City)
 Basin Population Density: 4,354 People/Square Mile
 Number 21 of 26 Basins (One is the lowest density)

LAND USE (within Bellevue city limits)

Public Right of Way:	16.06%	69.45 Acres
Commercial/Office:	0.09%	0.4 Acres
Institutional/Government:	2.27%	9.8 Acres
Multi-Family Residential:	0.16%	0.7 Acres
Open Space/Park:	4.21%	18.2 Acres
Single Family Residential:	60.71%	261.9 Acres
Mixed Use/Misc:	2.08%	9.0 Acres

LAND COVER

Impervious:	38%
Tree Canopy:	31%
Impervious in 100 Ft Stream Buffer:	6%
Tree Canopy in 100 Ft Stream Buffer:	55%



The City of Bellevue does not guarantee that the information on this map is accurate or complete. This data is provided on an "as is" basis and disclaims all warranties.



Sears Creek Basin

Lake Washington Watershed (WRIA 8)
State Stream #08-0267

LAND CHARACTERISTICS

Basin Area: 577 Total Acres (2% of the City)
 Drainage Jurisdiction(s):
 357.5 Acres - in Bellevue
 219.9 Acres - in Redmond

Highest Elevation: 444 Ft
 Lowest Elevation: 190 Ft

Total Length of Open Channel: 1,878 Ft
 Total Length of Storm Drainage Pipes: 43,564 Ft
 Built Rain Storage Volume per Acre of Impervious Surface:
 0.9 Inches

SALMON PRESENT in BASIN

Chinook*+
 Coho+
 Cutthroat trout

Sockeye

* Listed Federal Endangered Species
 + City Species of Local Importance (Bellevue Land Use Code 20.25H.150A)

POPULATION

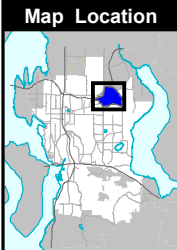
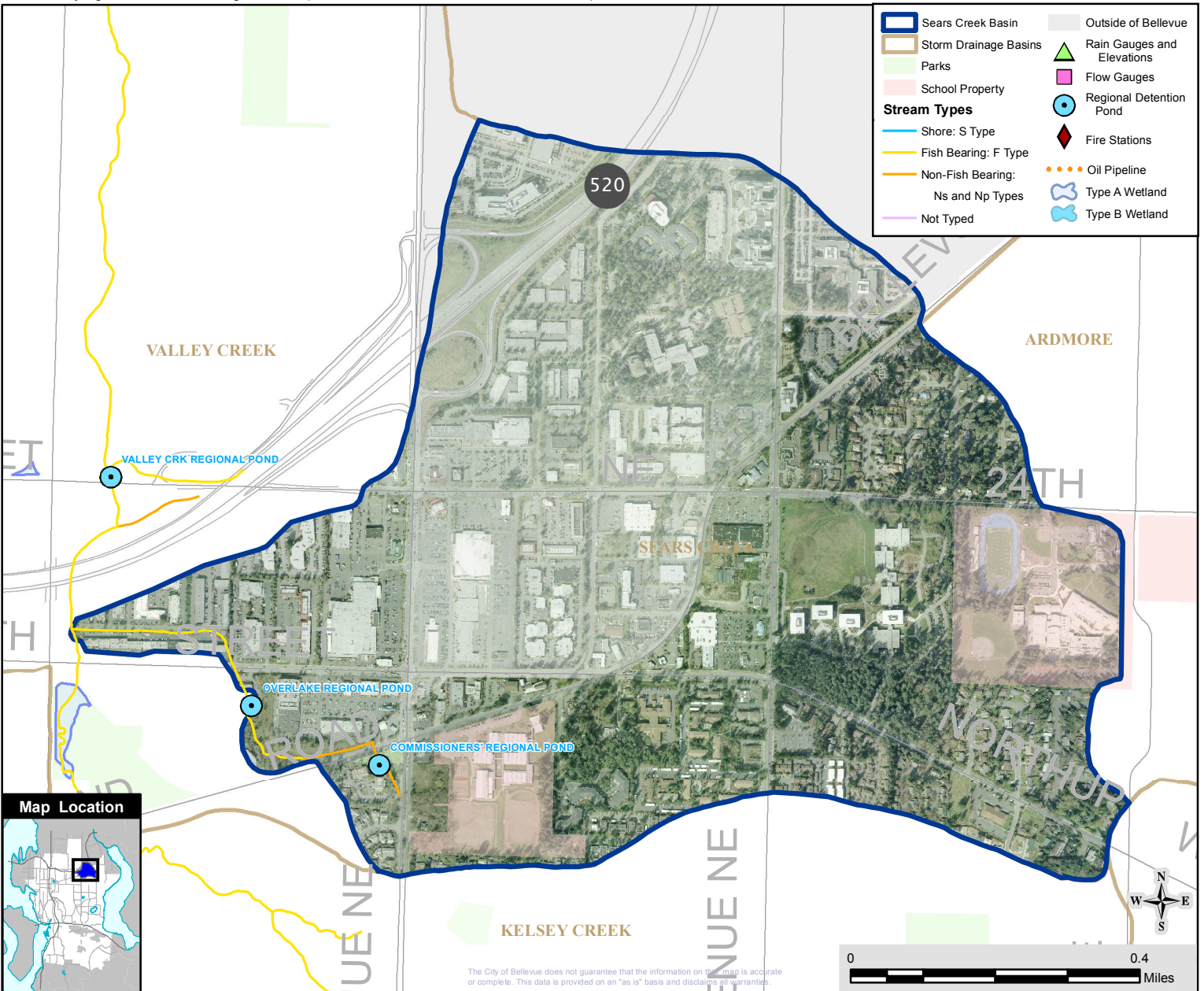
City Basin Population (2000): 2,391 (2.1% of the City)
 Basin Population Density: 3,156 People/Square Mile
 Number 13 of 26 Basins (One is the lowest density)

LAND USE (within Bellevue city limits)

Public Right of Way:	7.27%	42.00 Acres
Commercial/Office:	22.21%	79.4 Acres
Mixed Use/Misc:	12.02%	43.0 Acres
Industrial:	1.10%	3.9 Acres
Institutional/Government:	18.37%	65.7 Acres
Multi-Family Residential:	10.64%	38.0 Acres
Open Space/Park:	0.54%	1.9 Acres
Single Family Residential:	12.58%	45.0 Acres

LAND COVER

Impervious:	63%
Tree Canopy:	21%
Impervious in 100 Ft Stream Buffer:	52%
Tree Canopy in 100 Ft Stream Buffer:	44%



The City of Bellevue does not guarantee that the information on this map is accurate or complete. This data is provided on an "as is" basis and disclaims all warranties.



South Sammamish Area

Lake Washington Watershed (WRIA 8)

State Stream #08-0160, 08-0161

LAND CHARACTERISTICS

Basin Area: 593 Total Acres (2% of the City)
 Drainage Jurisdiction(s):
 336.9 Acres - in Bellevue
 16.4 Acres - in Issaquah
 238.5 Acres - in King County

Highest Elevation: 799 Ft
 Lowest Elevation: 30 Ft

Total Length of Open Channel: 17,488 Ft
 Total Length of Storm Drainage Pipes: 28,395 Ft
 Built Rain Storage Volume per Acre of Impervious Surface:
 Less than 0.5 Inches

SALMON PRESENT in BASIN

Lake only: Chinook*+, Coho+, Kokanee+, Sockeye
 Rainbow & cutthroat trout
 Steelhead (Lake only)

* Listed Federal Endangered Species
 + City Species of Local Importance (Bellevue Land Use Code 20.25H.150A)

POPULATION

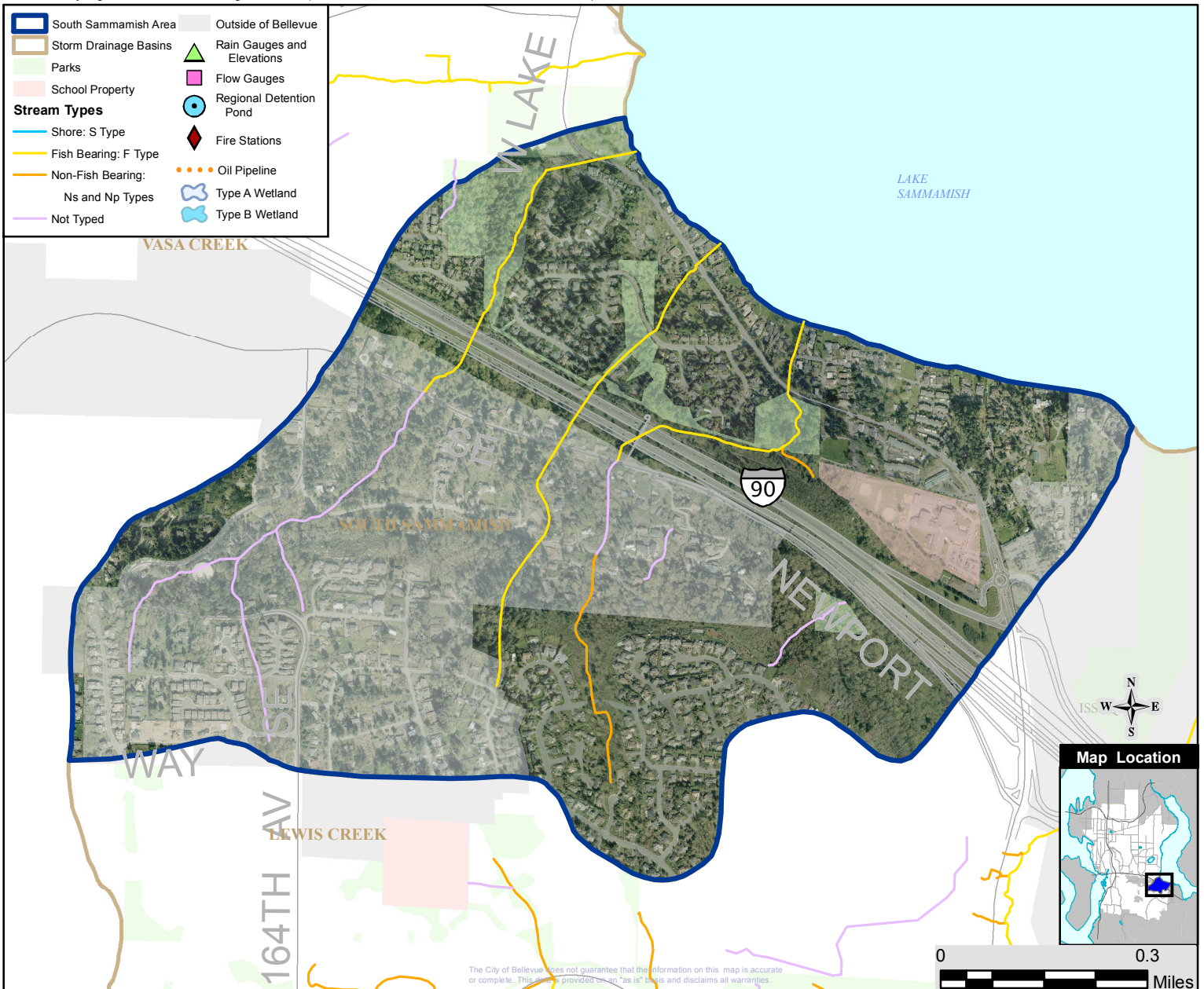
City Basin Population (2000): 1,689 (1.5% of the City)
 Basin Population Density: 2,755 People/Square Mile
 Number 11 of 26 Basins (One is the lowest density)

LAND USE (within Bellevue city limits)

Public Right of Way:	22.48%	133.32 Acres
Institutional/Government:	3.65%	12.3 Acres
Multi-Family Residential:	1.53%	5.2 Acres
Open Space/Park:	5.69%	19.2 Acres
Single Family Residential:	41.65%	140.3 Acres
Mixed Use/Misc:	2.80%	9.4 Acres

LAND COVER

Impervious:	31%
Tree Canopy:	48%
Impervious in 100 Ft Stream Buffer:	16%
Tree Canopy in 100 Ft Stream Buffer:	75%



The City of Bellevue does not guarantee that the information on this map is accurate or complete. This data is provided on an "as is" basis and disclaims all warranties.



Spirit Ridge Area

Lake Washington Watershed (WRIA 8)

LAND CHARACTERISTICS

Basin Area: 193 Total Acres (1% of the City)
 Drainage Jurisdiction(s):
 192.1 Acres - in Bellevue

Highest Elevation: 350 Ft
 Lowest Elevation: 31 Ft

Total Length of Open Channel: 0 Ft
 Total Length of Storm Drainage Pipes: 20,544 Ft
 Built Rain Storage Volume per Acre of Impervious Surface:
 Less than 0.5 Inches

SALMON PRESENT in BASIN

Lake only: Chinook*+, Coho+ , Kokanee+, Sockeye
 Rainbow & cutthroat trout (Lake only)
 Steelhead (Lake only)

* Listed Federal Endangered Species
 + City Species of Local Importance (Bellevue Land Use Code 20.25H.150A)

POPULATION

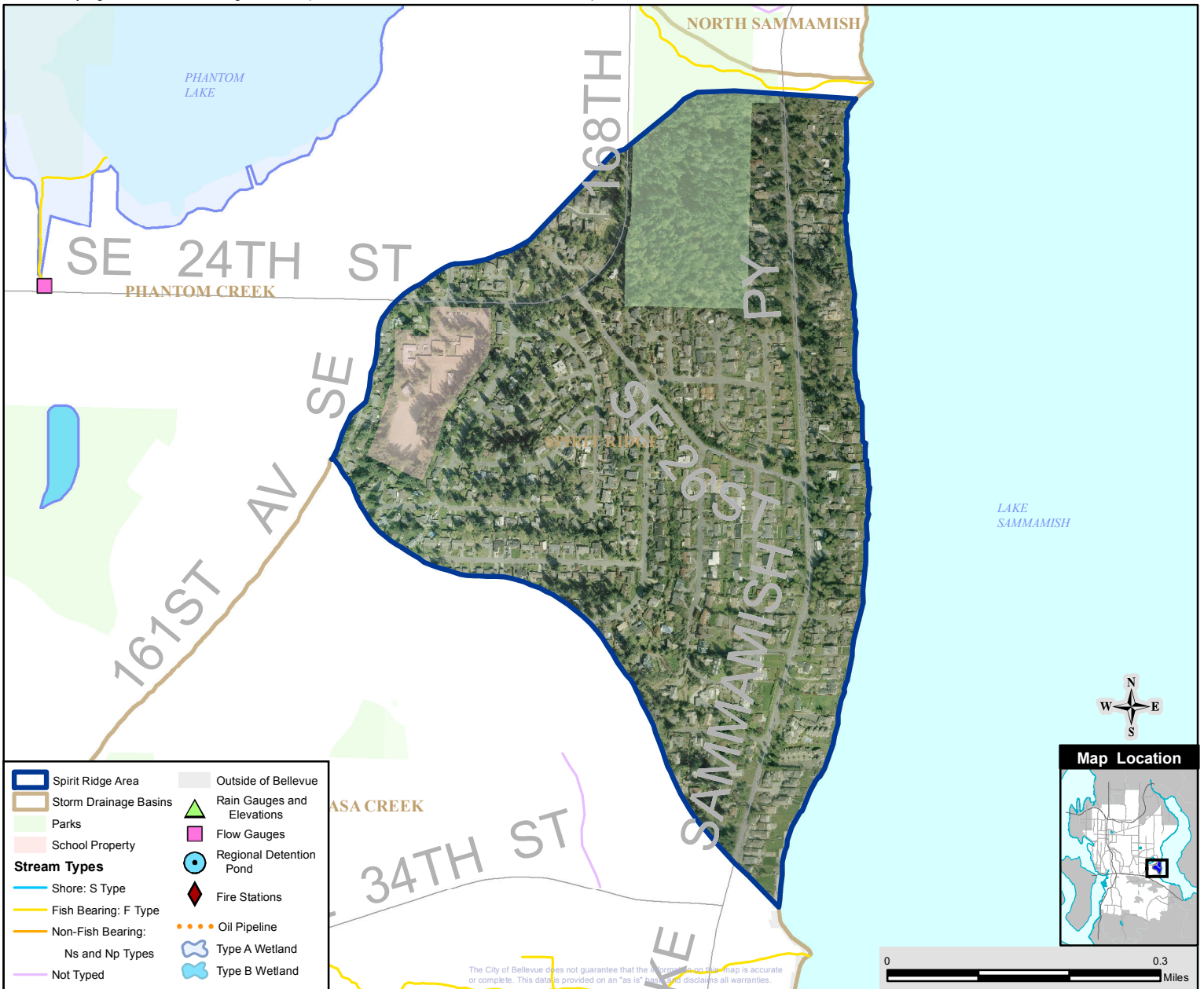
City Basin Population (2000): 1,274 (1.1% of the City)
 Basin Population Density: 4,230 People/Square Mile
 Number 19 of 26 Basins (One is the lowest density)

LAND USE (within Bellevue city limits)

Public Right of Way:	15.89%	30.68 Acres
Institutional/Government:	4.30%	8.3 Acres
Multi-Family Residential:	1.32%	2.5 Acres
Commercial/Office:	0.03%	0.1 Acres
Open Space/Park:	10.06%	19.3 Acres
Single Family Residential:	65.45%	125.8 Acres
Mixed Use/Misc:	0.54%	1.0 Acres

LAND COVER

Impervious:	40%
Tree Canopy:	34%
Impervious in 100 Ft Stream Buffer:	24%
Tree Canopy in 100 Ft Stream Buffer:	86%



The City of Bellevue does not guarantee that the information on this map is accurate or complete. This data is provided on an "as is" basis and does not constitute any warranties.



Sturtevant Creek Basin

Lake Washington Watershed (WRIA 8)

State Stream #08-0260

LAND CHARACTERISTICS

Basin Area: 773 Total Acres (4% of the City)
Drainage Jurisdiction(s):
773.0 Acres - in Bellevue

Highest Elevation: 248 Ft
Lowest Elevation: 19 Ft

Total Length of Open Channel: 4,038 Ft
Total Length of Storm Drainage Pipes: 90,833 Ft
Built Rain Storage Volume per Acre of Impervious Surface:
Less than 0.5 Inches

SALMON PRESENT in BASIN

Chinook*+
Coho+
Cutthroat trout

Sockeye

* Listed Federal Endangered Species
+ City Species of Local Importance (Bellevue Land Use Code 20.25H.150A)

POPULATION

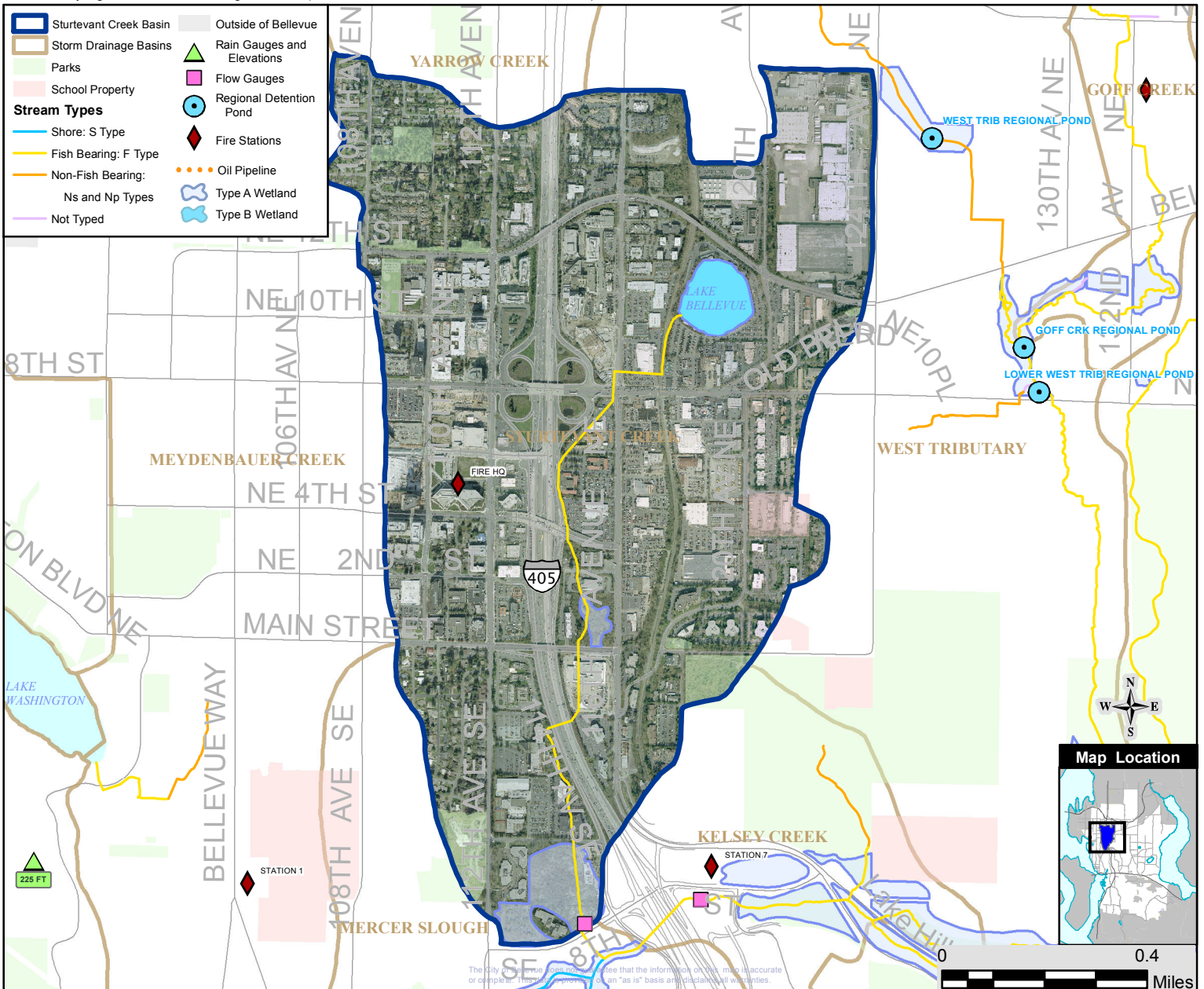
City Basin Population (2000): 2,182 (1.9% of the City)
Basin Population Density: 1,806 People/Square Mile
Number 2 of 26 Basins (One is the lowest density)

LAND USE (within Bellevue city limits)

Public Right of Way:	24.80%	191.68 Acres
Commercial/Office:	35.64%	275.5 Acres
Mixed Use/Misc:	8.21%	63.5 Acres
Industrial:	7.19%	55.6 Acres
Institutional/Government:	4.04%	31.2 Acres
Multi-Family Residential:	2.71%	20.9 Acres
Open Space/Park:	3.34%	25.8 Acres
Single Family Residential:	8.02%	62.0 Acres

LAND COVER

Impervious:	71%
Tree Canopy:	18%
Impervious in 100 Ft Stream Buffer:	62%
Tree Canopy in 100 Ft Stream Buffer:	23%





Sunset Creek Basin

Lake Washington Watershed (WRIA 8)
State Stream #08-0262

LAND CHARACTERISTICS

Basin Area: 890 Total Acres (3% of the City)

Drainage Jurisdiction(s):

536.6 Acres - in Bellevue

353.8 Acres - in King County

Highest Elevation: 1,059 Ft

Lowest Elevation: 63 Ft

Total Length of Open Channel: 9,830 Ft

Total Length of Storm Drainage Pipes: 87,054 Ft

Built Rain Storage Volume per Acre of Impervious Surface:
Less than 0.5 inches

POPULATION

City Basin Population (2000): 3,174 (2.8% of the City)

Basin Population Density: 4,126 People/Square Mile

Number 18 of 26 Basins (One is the lowest density)

LAND USE (within Bellevue city limits)

Public Right of Way: 25.87% 216.5 Acres

Commercial/Office: 4.39% 23.3 Acres

Industrial: 0.98% 5.2 Acres

Institutional/Government: 14.77% 78.6 Acres

Mixed Use/Misc: 4.05% 21.7 Acres

Multi-Family Residential: 0.38% 2.0 Acres

Open Space/Park: 2.89% 15.4 Acres

Single Family Residential: 44.2% 237.1 Acres

SALMON PRESENT in BASIN

Chinook**

Sockeye

Coho+

Steelhead

Cutthroat Trout

LAND COVER

Impervious: 42%

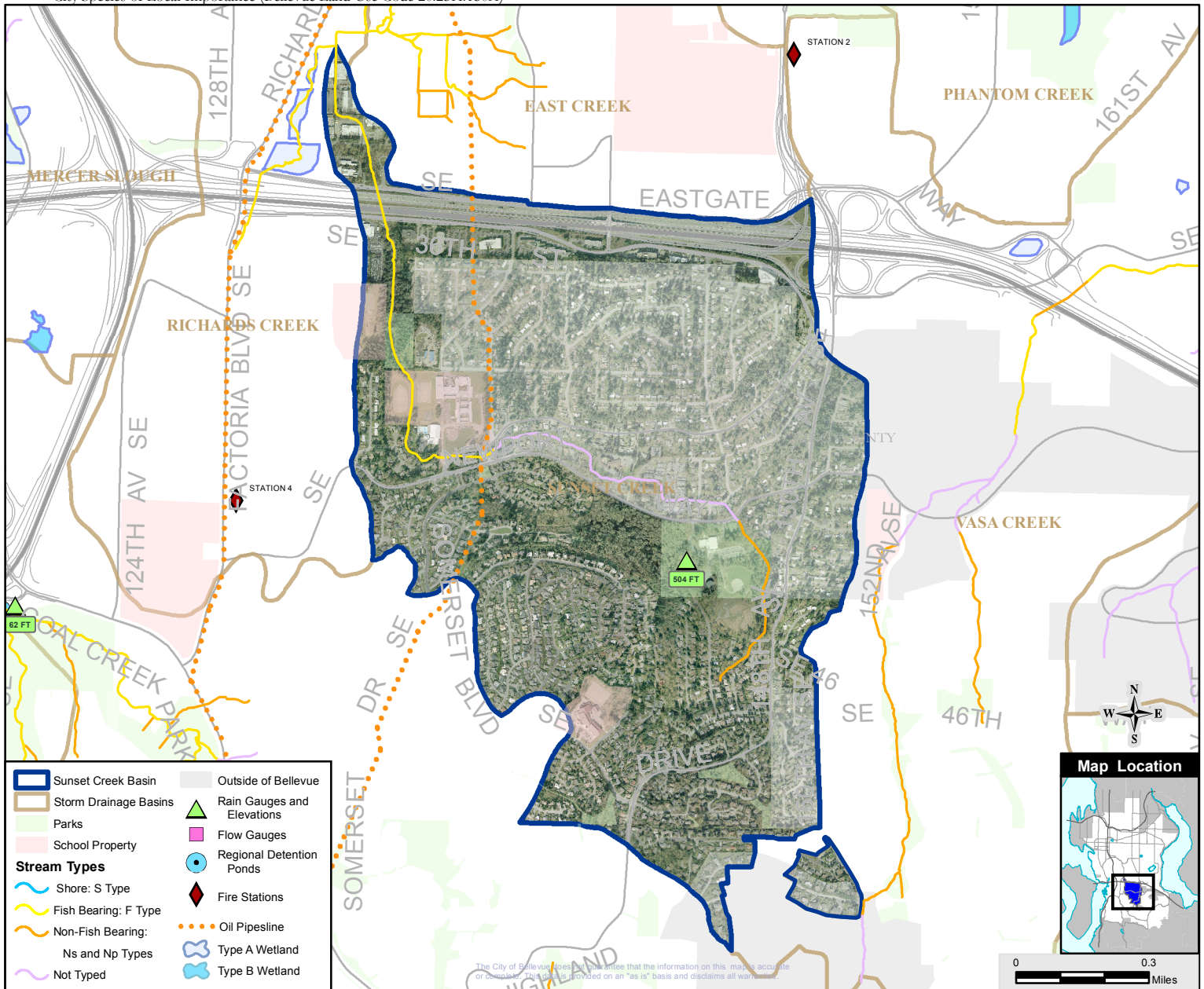
Tree Canopy: 35%

Impervious in 100 Ft Stream Buffer: 28%

Tree Canopy in 100 Ft Stream Buffer: 60%

* Listed Federal Endangered Species

+ City Species of Local Importance (Bellevue Land Use Code 20.25H.150A)





Valley Creek Basin

Lake Washington Watershed (WRIA 8)
State Stream #08-0266

LAND CHARACTERISTICS

Basin Area: 1,391 Total Acres (6% of the City)

Drainage Jurisdiction(s):

- 1,307.0 Acres - in Bellevue
- 29.4 Acres - in King County
- 3.1 Acres - in Kirkland
- 51.4 Acres - in Redmond

Highest Elevation: 529 Ft
Lowest Elevation: 182 Ft

Total Length of Open Channel: 17,290 Ft
Total Length of Storm Drainage Pipes: 76,677 Ft
Built Rain Storage Volume per Acre of Impervious Surface:
0.8 Inches

SALMON PRESENT in BASIN

- Chinook*+
- Coho+
- Cutthroat trout

* Listed Federal Endangered Species
+ City Species of Local Importance (Bellevue Land Use Code 20.25H.150A)

POPULATION

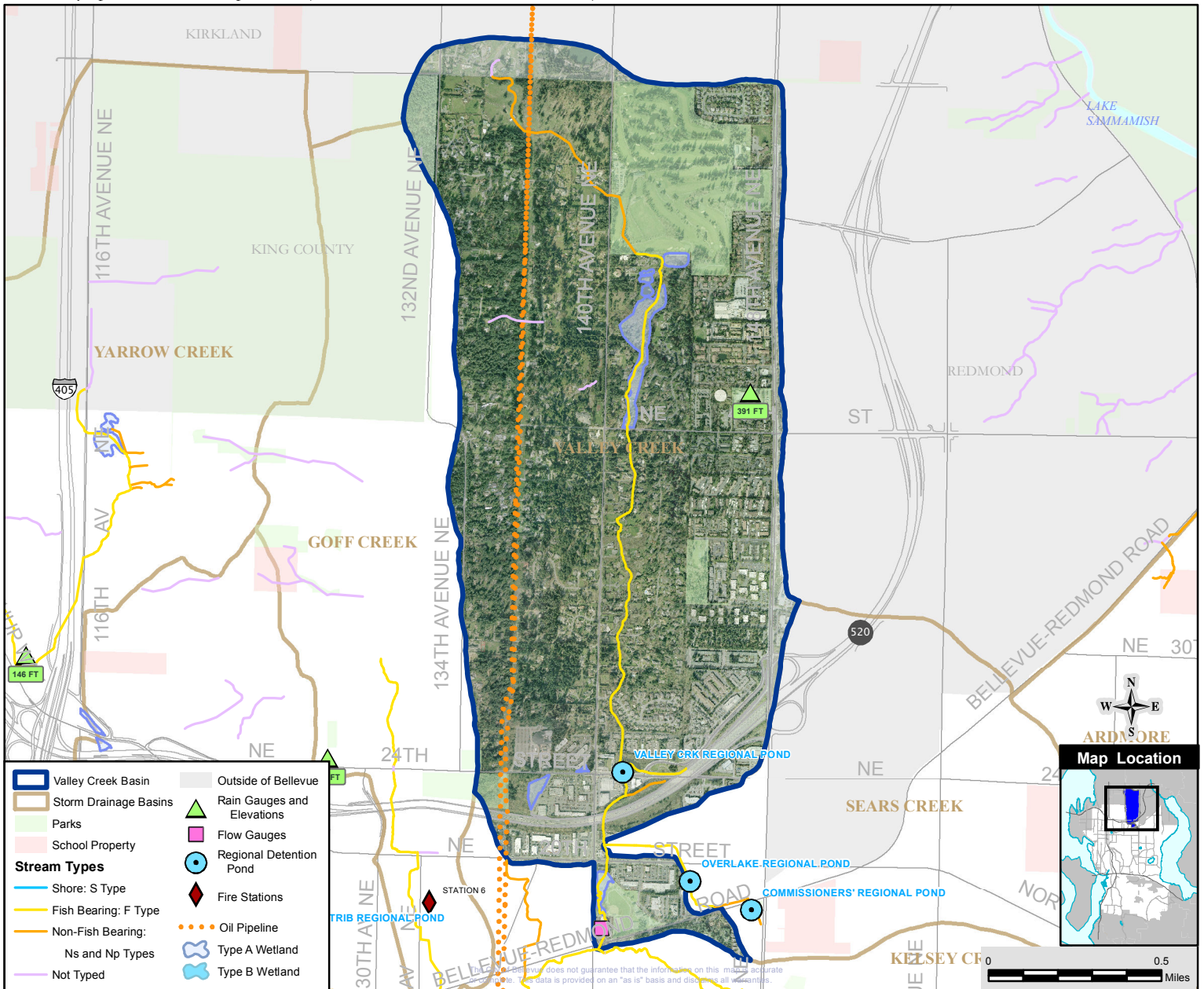
City Basin Population (2000): 7,605 (6.8% of the City)
Basin Population Density: 3,683 People/Square Mile
Number 15 of 26 Basins (One is the lowest density)

LAND USE (within Bellevue city limits)

Public Right of Way:	9.34%	129.89 Acres
Commercial/Office:	6.19%	81.0 Acres
Industrial:	0.22%	2.9 Acres
Institutional/Government:	0.83%	10.9 Acres
Mixed Use/Misc:	2.56%	33.5 Acres
Multi-Family Residential:	11.35%	148.3 Acres
Open Space/Park:	14.67%	191.7 Acres
Single Family Residential:	46.50%	607.7 Acres

LAND COVER

Impervious:	34%
Tree Canopy:	42%
Impervious in 100 Ft Stream Buffer:	20%
Tree Canopy in 100 Ft Stream Buffer:	56%





Vasa Creek Basin

Lake Washington Watershed (WRIA 8)
State Stream #08-0156

LAND CHARACTERISTICS

Basin Area: 1,085 Total Acres (4% of the City)
 Drainage Jurisdiction(s):
 841.0 Acres - in Bellevue
 243.9 Acres - in King County

Highest Elevation: 1,195 Ft
 Lowest Elevation: 31 Ft

Total Length of Open Channel: 18,002 Ft
 Total Length of Storm Drainage Pipes: 103,034 Ft
 Built Rain Storage Volume per Acre of Impervious Surface:
 Less than 0.5 Inches

SALMON PRESENT in BASIN

Chinook*+ (Lake only) Sockeye (Lake only)
 Rainbow & cutthroat trout Kokanee+
 Coho+ Steelhead (Lake only)

* Listed Federal Endangered Species
 + City Species of Local Importance (Bellevue Land Use Code 20.25H.150A)

POPULATION

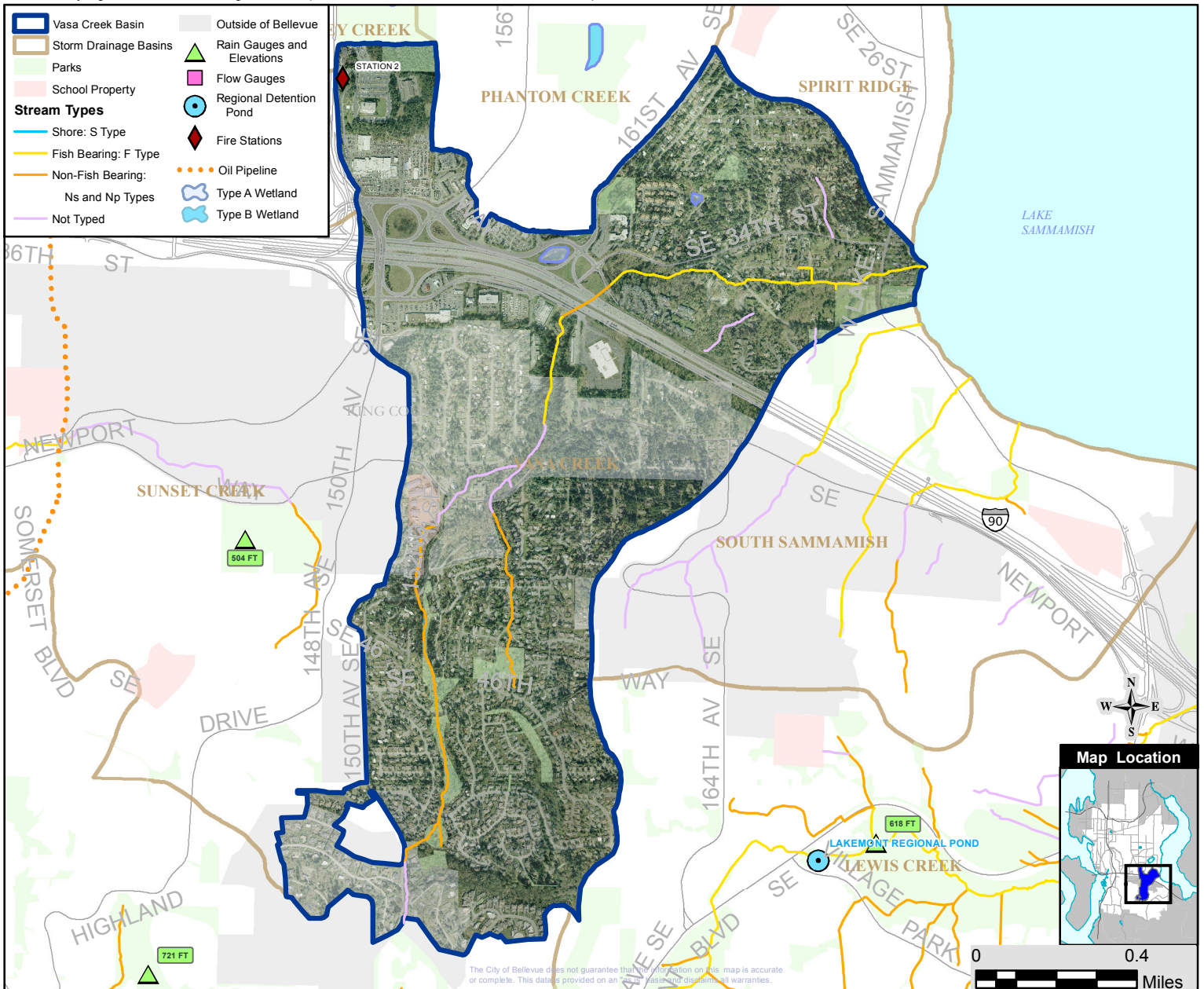
City Basin Population (2000): 4,586 (4.1% of the City)
 Basin Population Density: 3,504 People/Square Mile
 Number 14 of 26 Basins (One is the lowest density)

LAND USE (within Bellevue city limits)

Public Right of Way:	23.12%	250.97 Acres
Commercial/Office:	8.12%	68.3 Acres
Mixed Use/Misc:	2.94%	24.7 Acres
Industrial:	0.43%	3.6 Acres
Institutional/Government:	5.48%	46.1 Acres
Multi-Family Residential:	3.77%	31.7 Acres
Open Space/Park:	2.43%	20.5 Acres
Single Family Residential:	46.13%	387.9 Acres

LAND COVER

Impervious:	40%
Tree Canopy:	40%
Impervious in 100 Ft Stream Buffer:	17%
Tree Canopy in 100 Ft Stream Buffer:	73%



The City of Bellevue does not guarantee that the information on this map is accurate or complete. This data is provided on an "as is" basis with no warranties.



West Tributary Basin

Lake Washington Watershed (WRIA 8)
State Stream #08-0264

LAND CHARACTERISTICS

Basin Area: 1,006 Total Acres (5% of the City)
Drainage Jurisdiction(s):
1,005.8 Acres - in Bellevue

Highest Elevation: 496 Ft
Lowest Elevation: 26 Ft

Total Length of Open Channel: 18,121 Ft
Total Length of Storm Drainage Pipes: 86,842 Ft
Built Rain Storage Volume per Acre of Impervious Surface:
1.2 Inches

SALMON PRESENT in BASIN

Chinook*+
Migratory & resident cutthroat trout
Coho+

Sockeye

* Listed Federal Endangered Species
+ City Species of Local Importance (Bellevue Land Use Code 20.25H.150A)

POPULATION

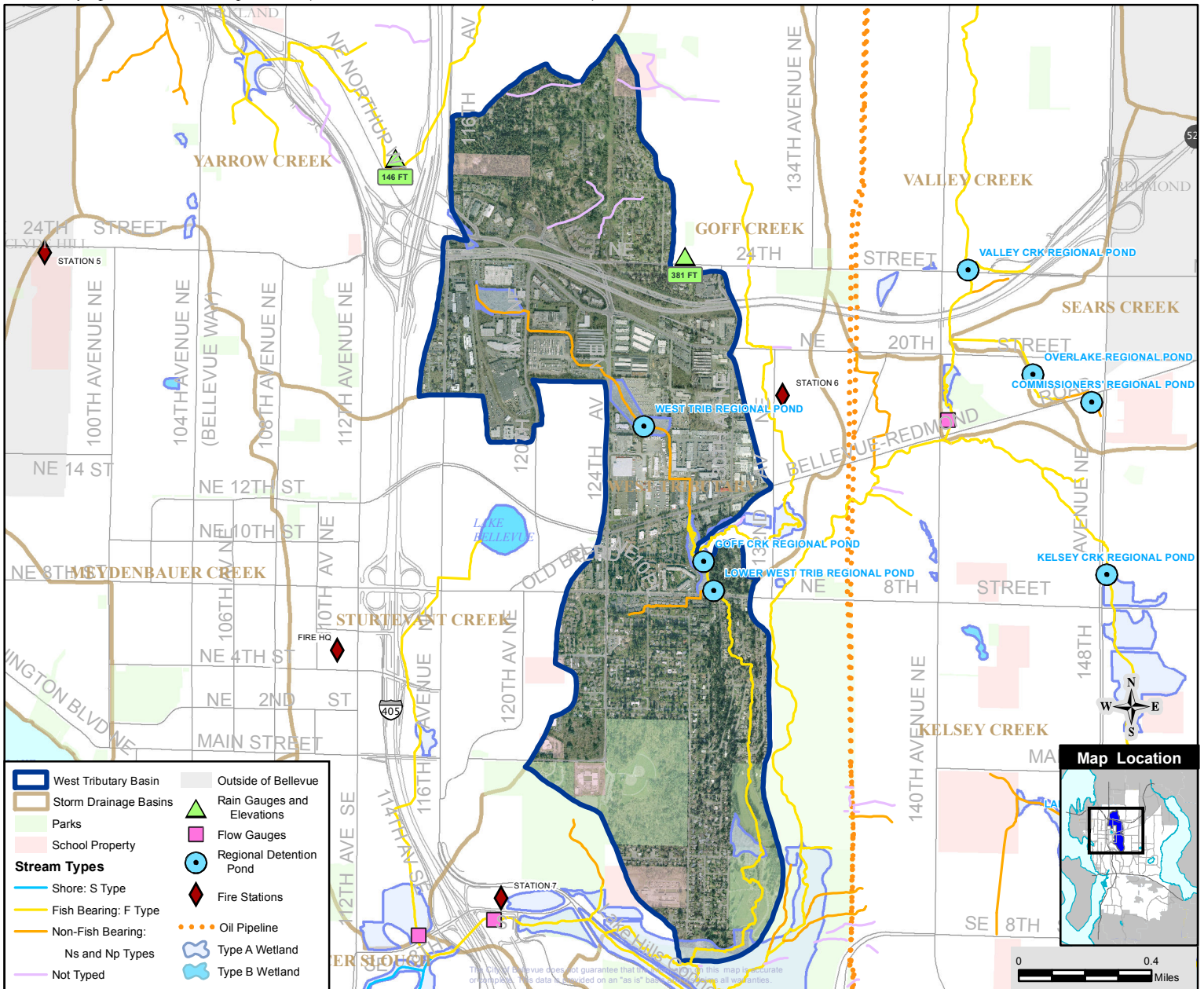
City Basin Population (2000): 3,329 (3.0% of the City)
Basin Population Density: 2,118 People/Square Mile
Number 7 of 26 Basins (One is the lowest density)

LAND USE (within Bellevue city limits)

Public Right of Way:	16.18%	162.73 Acres
Commercial/Office:	9.03%	90.9 Acres
Industrial:	15.09%	151.8 Acres
Institutional/Government:	4.62%	46.5 Acres
Mixed Use/Misc:	4.54%	45.7 Acres
Multi-Family Residential:	4.84%	48.7 Acres
Open Space/Park:	12.46%	125.3 Acres
Single Family Residential:	29.34%	295.1 Acres

LAND COVER

Impervious:	46%
Tree Canopy:	34%
Impervious in 100 Ft Stream Buffer:	28%
Tree Canopy in 100 Ft Stream Buffer:	49%





Wilkins Creek Basin

Lake Washington Watershed (WRIA 8)
State Stream #08-0151

LAND CHARACTERISTICS

Basin Area: 306 Total Acres (1% of the City)
 Drainage Jurisdiction(s):
 305.4 Acres - in Bellevue

Highest Elevation: 446 Ft
 Lowest Elevation: 31 Ft

Total Length of Open Channel: 1,654 Ft
 Total Length of Storm Drainage Pipes: 43,625 Ft
 Built Rain Storage Volume per Acre of Impervious Surface:
 0 Inches

SALMON PRESENT in BASIN

Lake only: Chinook*+, Coho+ , Kokanee+, Sockeye
 Rainbow & cutthroat trout (Lake only)
 Steelhead (Lake only)

* Listed Federal Endangered Species
 + City Species of Local Importance (Bellevue Land Use Code 20.25H.150A)

POPULATION

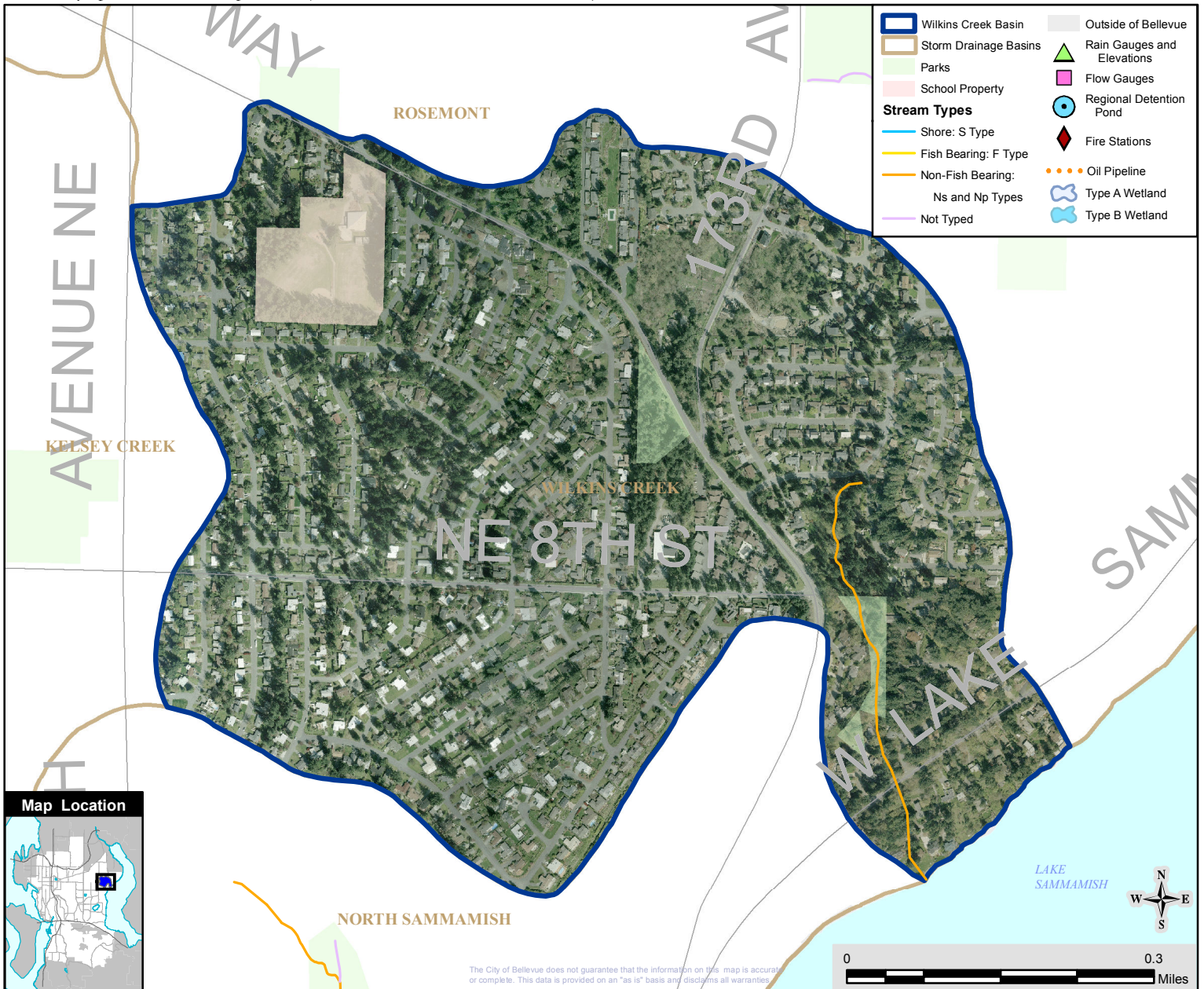
City Basin Population (2000): 2,560 (2.3% of the City)
 Basin Population Density: 5,363 People/Square Mile
 Number 25 of 26 Basins (One is the lowest density)

LAND USE (within Bellevue city limits)

Public Right of Way:	21.24%	64.91 Acres
Institutional/Government:	2.84%	8.7 Acres
Mixed Use/Misc:	0.86%	2.6 Acres
Multi-Family Residential:	3.60%	11.0 Acres
Open Space/Park:	3.81%	11.6 Acres
Single Family Residential:	65.23%	199.2 Acres

LAND COVER

Impervious:	41%
Tree Canopy:	29%
Impervious in 100 Ft Stream Buffer:	16%
Tree Canopy in 100 Ft Stream Buffer:	77%



The City of Bellevue does not guarantee that the information on this map is accurate or complete. This data is provided on an "as is" basis and disclaims all warranties.



Yarrow Creek Basin

Lake Washington Watershed (WRIA 8)
State Stream #08-0252

LAND CHARACTERISTICS

Basin Area: 1,667 Total Acres (5% of the City)

Drainage Jurisdiction(s):
 926.4 Acres - in Bellevue
 0.8 Acres - in Clyde Hill
 281.2 Acres - in King County
 457.1 Acres - in Kirkland

Highest Elevation: 534 Ft
 Lowest Elevation: 9 Ft

Total Length of Open Channel: 25,143 Ft
 Total Length of Storm Drainage Pipes: 78,411 Ft
 Built Rain Storage Volume per Acre of Impervious Surface:
 Less than 0.5 Inches

SALMON PRESENT in BASIN

- Chinook*+ (Lake only)
- Rainbow trout (Lake only)
- Coho+ (Lake only)
- Sockeye (Lake only)
- Cutthroat trout
- Steelhead (Lake only)

* Listed Federal Endangered Species
 + City Species of Local Importance (Bellevue Land Use Code 20.25H.150A)

POPULATION

City Basin Population (2000): 3,772 (3.4% of the City)
 Basin Population Density: 1,911 People/Square Mile
 Number 4 of 26 Basins (One is the lowest density)

LAND USE (within Bellevue city limits)

Public Right of Way:	16.49%	274.94 Acres
Commercial/Office:	10.23%	94.8 Acres
Industrial:	1.73%	16.0 Acres
Institutional/Government:	2.25%	20.9 Acres
Mixed Use/Misc:	5.49%	50.9 Acres
Multi-Family Residential:	6.87%	63.6 Acres
Open Space/Park:	2.52%	23.3 Acres
Single Family Residential:	39.36%	364.6 Acres

LAND COVER

Impervious:	31%
Tree Canopy:	53%
Impervious in 100 Ft Stream Buffer:	27%
Tree Canopy in 100 Ft Stream Buffer:	58%

