



# Pikes Peak Reservoir and Pump Station Project

## Project Overview

In Bridle Trails State Park, Bellevue Utilities, through a utility easement with Washington State Parks, owns, operates and maintains the Pikes Peak Reservoir and Pump Station facilities. Bellevue Utilities is planning to replace both the reservoir and the pump station. This is a high-priority project because these valuable water system assets provide water service reliability and fire protection to the residents of the Bridle Trails area.

## Background

Constructed in 1968, the existing one million-gallon reservoir is approximately 85 feet in diameter and 28 feet high. The new reservoir will need to hold 1.25 million-gallons, as identified in the Bellevue Utilities 2016 Water System Plan. After evaluation of the reservoir and pump station, Bellevue Utilities determined they are not up to current seismic and operating standards and are nearing the end of their useful lives. Bellevue Utilities is taking a collaborative approach over the initial phase of this project to evaluate alternatives, then will execute a selected option to improve the reservoir and pump station.

## Collaborative Evaluation Process

Bellevue Utilities is currently evaluating proposed improvements for replacement of the reservoir and pump station within the existing area of the State Park and potential relocations of the pump station to the existing Cherry Crest Pump Station site (located about one mile to the south). As a part of this process, Bellevue Utilities is gathering public input through a Community Advisory Group. The results of the reservoir and pump station evaluations and the feedback from the Community Advisory Group will help shape the future of these two important facilities.

Stay Informed

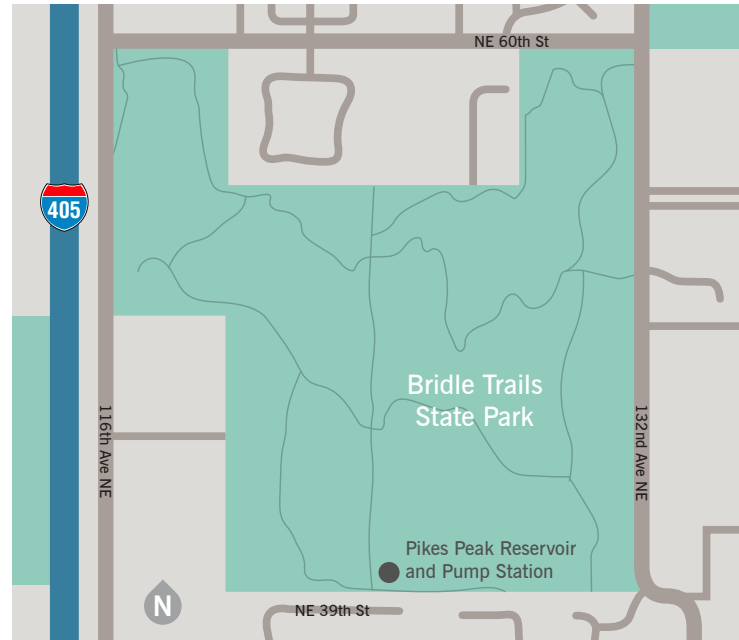
Project updates: [www.bellevuewa.gov/pikespeak.htm](http://www.bellevuewa.gov/pikespeak.htm)

Contact: **Jay Hummel, P.E.**

**Project Manager / Bellevue Utilities**

**JHummel@bellevuewa.gov**

**425 452 4160**

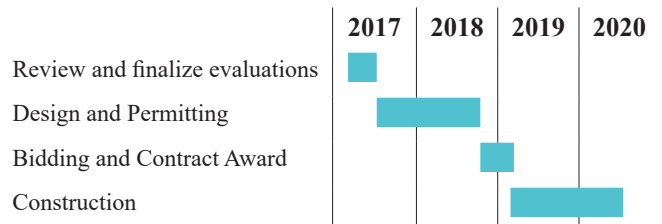


Map of project area



Pikes Peak Reservoir and Pump Station

## Preliminary Project Schedule



\*Schedule subject to change based on selected alternative